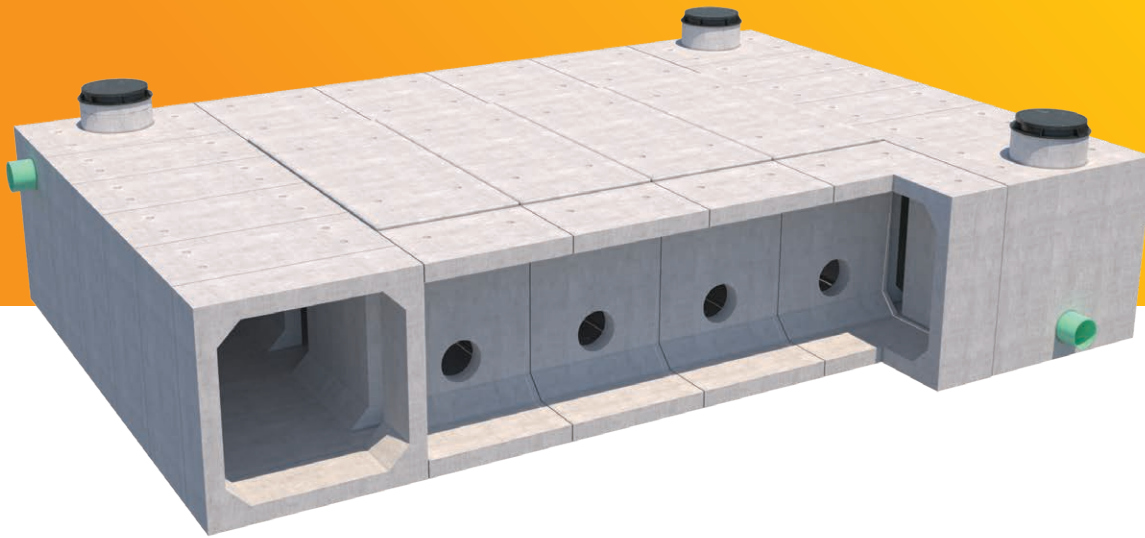


DETENTION & INFILTRATION

Modular, Efficient Stormwater Storage System for Volume Control Applications



JENSEN DETENTION RESERVOIR

The Jensen Detention Reservoir is a precast modular stormwater storage system comprised of proprietary, specialty reinforced box culvert sections and precast concrete spanning slabs. The resulting solution achieves the most economical means to meet small and large scale detention and infiltration requirements for both development and retrofit projects. The system supports project-specific storage volume, runoff flow rates, water quality, and erosion control goals. Especially where space is tight and land costs are significant, the JDR detention and infiltration system maximizes the intended land use of the development.



DESIGN

- Develop storage and runoff calculations to support project Hydromodification Plans and comply with the Standard Urban Stormwater Mitigation Plan.
- Leverage wide inventory of precast geometry for culverts, vaults, tanks and manholes engineered into modular systems for limitless configurations to provide the required storage volume within a specific project footprint.
- Engineer for direct traffic and heavy loading applications like aircraft, rail, deep bury, seismic, and high groundwater.



BID

- Count on efficiency and experience to produce the most economical sections and shapes, maximizing installation speed and minimizing truck loads to reduce project costs.
- Receive guidance on installation requirements for a tight bid.



BUILD

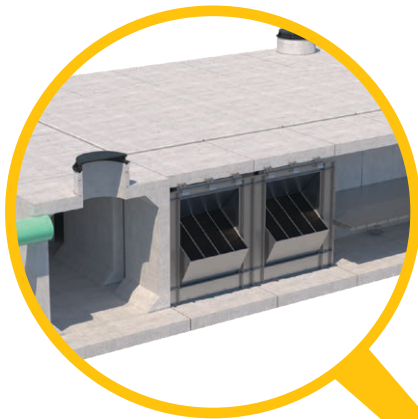
- Rely on a proven track record for maintaining project timelines and fast, easy installation.
- Install quickly and efficiently with tight fitting, high quality precast components.
- Backfill with native, onsite material for most applications and no additional concrete foundation pours are required.



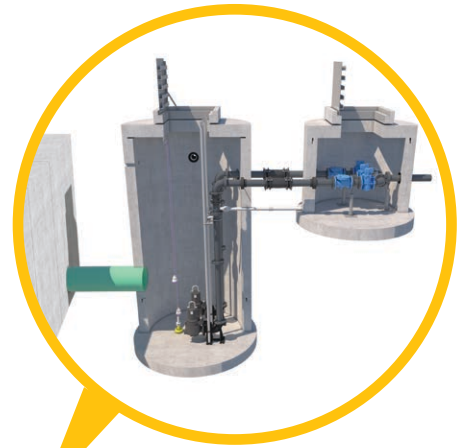
Control Stormwater Volume with Modular Design Configurations

DETENTION, INFILTRATION & CISTERN APPLICATIONS

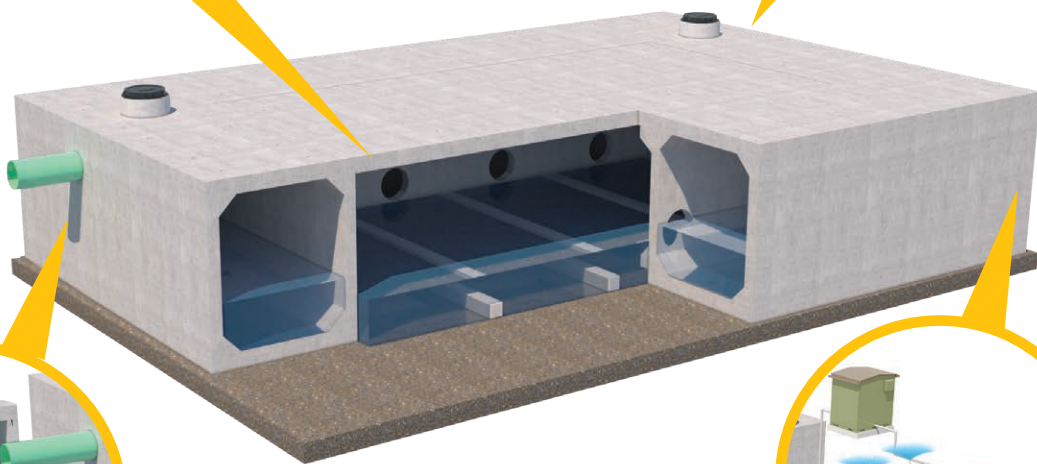
Jensen Detention Reservoir systems can be arranged in many configurations to meet stormwater storage volumes for Detention, Retention, Infiltration and Rainwater Harvesting & Reuse needs within a specified footprint and installation depth.



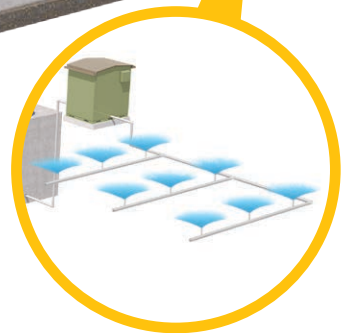
Detention or Infiltration with Advanced Treatment Coalescing Separators and Filtration Systems



Detention with Packaged Pump Station



Detention or Infiltration with pre-treatment utilizing Jensen Deflective Separator



Cistern with Rainwater Harvesting Package