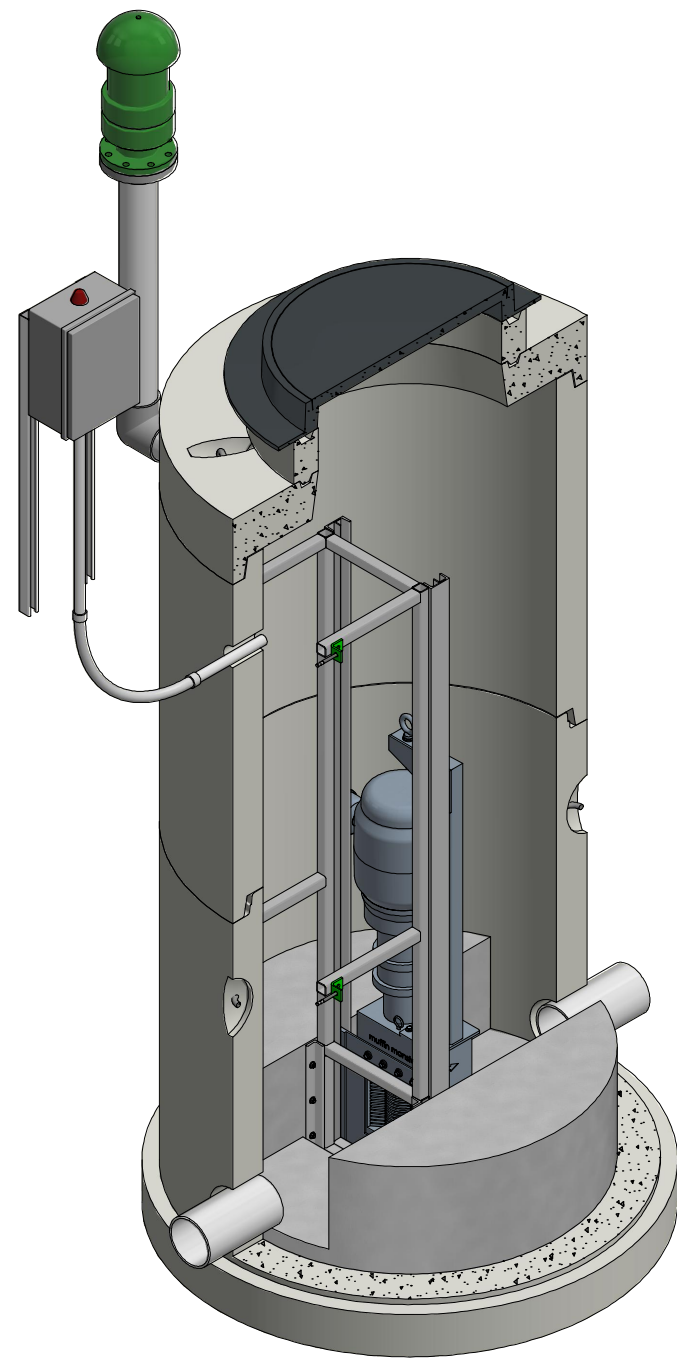


**PRELIMINARY DRAWING  
NOT FOR CONSTRUCTION**

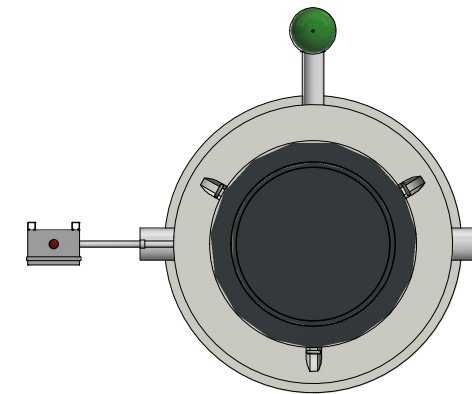
# 48" DIA. CHANNEL GRINDER SYSTEM

**MODEL#: 48-OC-G**

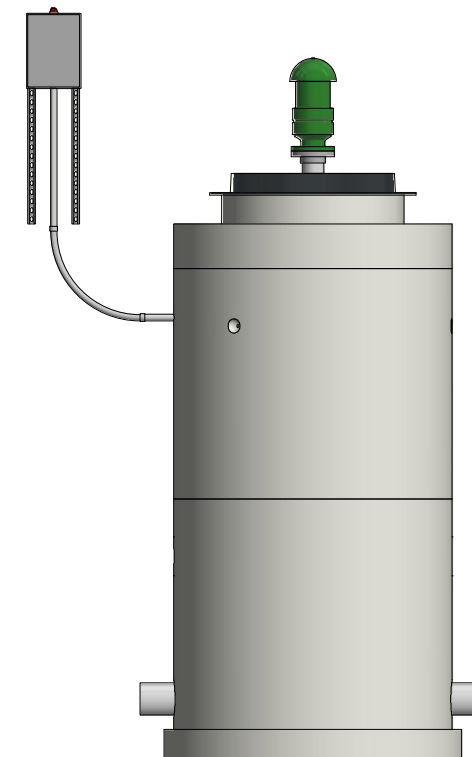
THICKNESSES, NUMBER OF PIECES, AND  
TYPES OF PIECES COULD CHANGE



**TOP LEFT ISOMETRIC VIEW W/ SECTION**  
NOT TO SCALE



**PLAN VIEW**  
NOT TO SCALE



**PROFILE VIEW**  
NOT TO SCALE

48-OC-G.dwg

**DISCLAIMERS, INCLUDING BUT NOT LIMITED TO:**

- 1.) All precast concrete materials and manufacturing methods shall conform to all current and applicable ASTM, AASHTO and NPCA standards and specifications.
- 2.) All precast concrete components to be manufactured in an NPCA certified plant.
- 3.) All elevations have been provided by others, and have not been verified by Jensen Precast. Contractor to verify all dimensions and elevations prior to installation.
- 4.) These layout drawings are intended to show overall system design only. All concrete component thicknesses, dimensions, lengths and joint orientations may vary across Jensen Precast's manufacturing facilities and are subject to change pending final design. Contractor to confirm all information prior to installation.
- 5.) System design criteria has been provided to Jensen Precast. Others are responsible for verification that system meets the intended application.
- 6.) Foundation, subgrade and backfill to be designed by others.
- 7.) For complete design and product information, or custom design conditions, please contact Jensen Precast.

**JENSEN**  PUMP STATIONS

521 DUNN CIRCLE, SPARKS, NV 89431  
www.jensenwaterresources.com  
(855) 468-5600

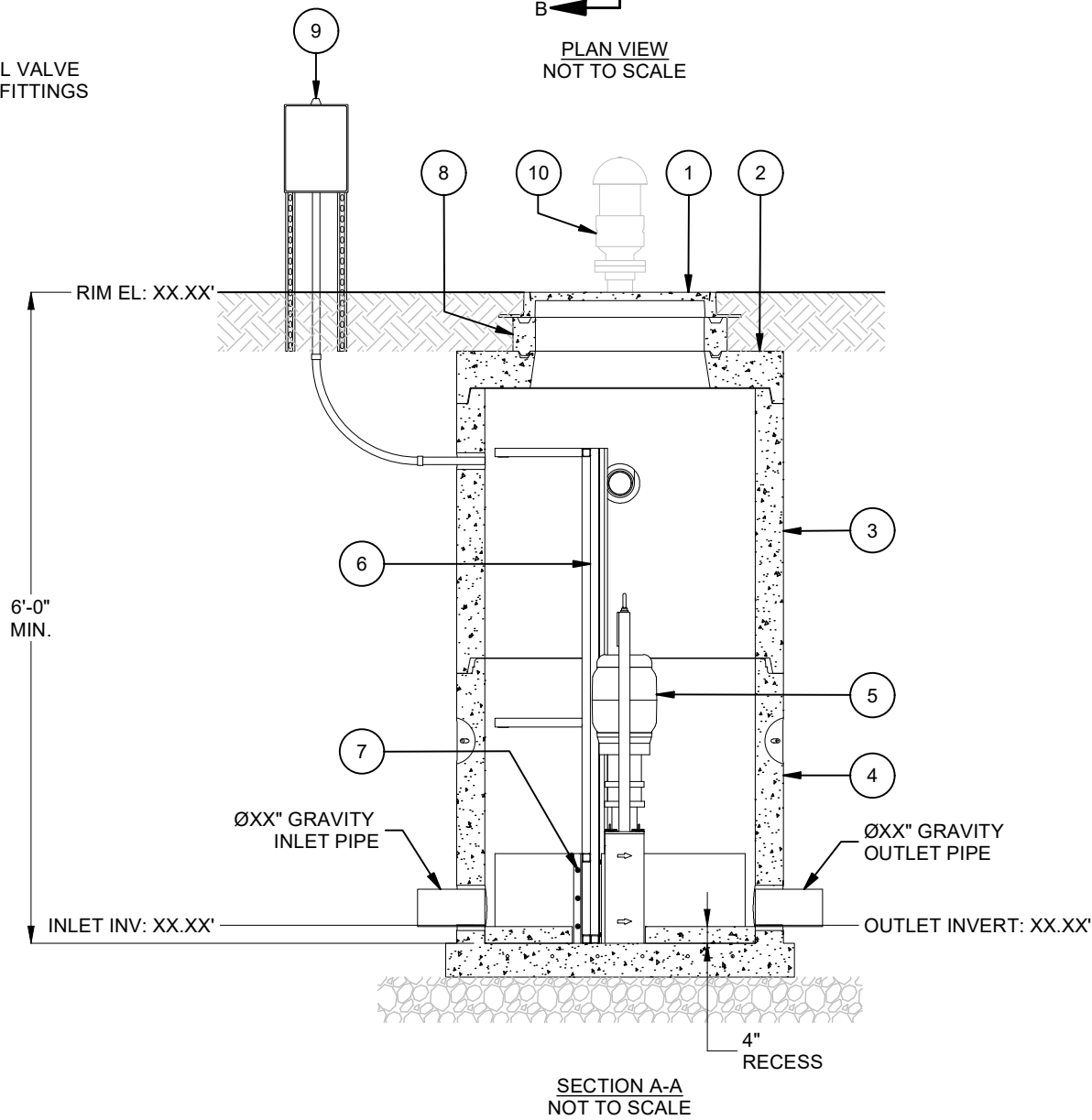
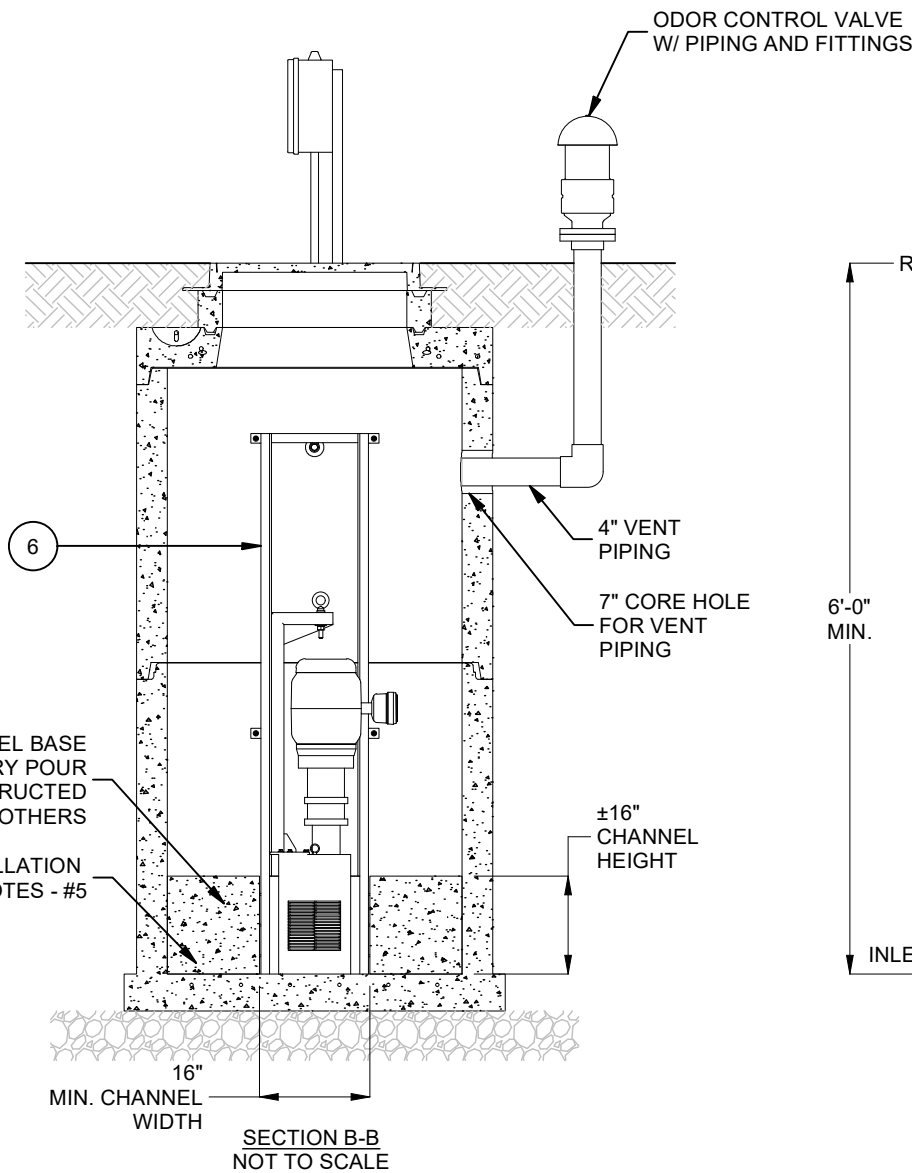
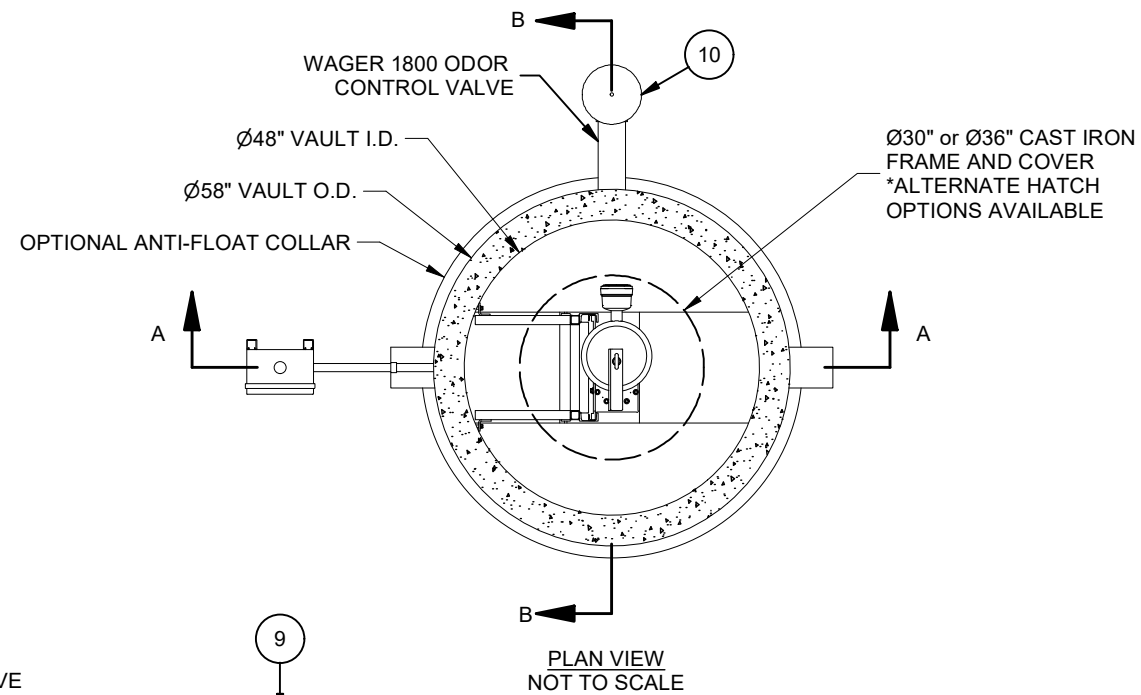
©2018 Jensen Precast - All rights reserved.  
All materials appearing as Jensen Precast documents and the like are proprietary work product and are protected under U.S. copyright and other laws.  
Unless in conjunction with business conducted with Jensen Precast, any use of Jensen Precast work product without express, written consent is prohibited, and recipient is prohibited from distributing any and all work product to non-approved third parties under penalty of civil action.

DESCRIPTION:		48" DIA. OPEN CHANNEL GRINDER		REV:
PART NUMBER:		48-OC-G		SHEET:
CREATED:		DRAWN BY: C. Purdie		1 of 2
		MODIFIED: 2/21/2022		

Title Sheet

**PRELIMINARY DRAWING  
NOT FOR CONSTRUCTION**

THICKNESSES, NUMBER OF PIECES, AND TYPES OF PIECES COULD CHANGE



BILL OF MATERIALS		
ITEM	QTY	DESCRIPTION
1	1	CAST IRON FRAME AND COVER *DIFFERENT OPTIONS AVAILABLE
2	1	48" DIA. PRECAST CONCRETE MANHOLE FLAT TOP
3	1	48" DIA. PRECAST CONCRETE MANHOLE BARREL
4	1	48" DIA. PRECAST CONCRETE MANHOLE BASE
5	1	CHANNEL GRINDER UNIT W/ XP MOTOR
6	1	GRINDER SLIDE RAIL LIFT OUT ASSEMBLY
7	10	SS HARDWARE FOR GRINDER INSTALLATION
8	1	GRADE RING 30DIA X 6IN
9	1	STANDALONE CONTROL PANEL
10	1	ODOR CONTROL 4IN W/ RAIN SHIELD WAGER 1800 & PIPING + FITTINGS

GRINDER CHARACTERISTICS	
DESCRIPTION	VALUE
GRINDER TYPE	OPEN CHANNEL GRINDER
MAX GRINDER FLOW RATE	300 GPM
HEADLOSS ACROSS UNIT	~5" @ 300 GPM
HORSEPOWER	3.0 / 5.0 HP
REQUIRED POWER	230/460 V   3 PH
ACCESS HATCH/COVER LOAD RATING	H-20 LOAD LEVEL 6

- GENERAL NOTES**
- Others responsible for sizing, design, supply and installation of electrical conduits. Contractor responsible for verifying pump and level detection cable lengths are adequate.
  - Others responsible for gravity piping and connection design.
  - Inlet/outlet pipe shown for clarity only. Others responsible for providing pipe.

- DISCLAIMERS:**
- Control panel installation, mounting design & hardware by others.
  - Final control panel location to be determined according to project requirements. Consult all submitted pump and level control cable lengths when determining the control panel location.
  - All foundation, subgrade & backfill designed by others.

- INSTALLATION NOTES**
- Precast concrete joints to be sealed using butyl rubber compound supplied by Jensen Precast.
  - Contractor to adjust elevation of frame and cover in field as necessary.
  - Contractor to provide all pipe openings in field as necessary.
  - Contractor to grout all pipe penetrations in precast concrete openings in field as necessary.
  - Dimensions for grinder channel to be provided by Jensen prior to construction. Channel dimensions may vary depending on grinder unit.

- DESIGN NOTES**
- Designed in accordance with ASTM C478 for AASHTO HS-20 traffic loading.
  - Structures are not suitable for additional loading conditions, such as but not limited to: footing loads, foundation loads, seismic loads, etc.
  - Groundwater assumed to be below bottom of structure.
  - Bury depth is assumed to be between 0.5-FT to 5-FT to top of structure / bury depth is as indicated on layout drawing.
  - Access hatch/cover load ratings are determined in accordance with ASTM C1802 design and placement requirements.

- ABBREVIATED SPECIFICATIONS:**
- Provide site assembled packaged grinder station, including specified controls, grinder unit and precast concrete vault manufactured and furnished by Jensen Precast, (855) 468-5600, PumpStations@jensenprecast.com, www.JensenPrecast.com/Water-Resources.
  - Precast Concrete: Size indicated, with provision for sealant at joints, meeting ASTM C 478, precast, reinforced concrete.
  - Manufacturer's Warranty: Manufacturer's standard form in which manufacturer agrees to repair or replace components of pumping stations that fail in materials or workmanship within specified warranty period.
  - Grinder Unit: Furnish and install JWC Environmental or Vogelsang grinder/macerator unit.
  - Controls: Provide grinder manufacturers approved control panel.

**DISCLAIMERS, INCLUDING BUT NOT LIMITED TO:**

- All precast concrete materials and manufacturing methods shall conform to all current and applicable ASTM, AASHTO and NPCA standards and specifications.
- All precast concrete components to be manufactured in an NPCA certified plant.
- All elevations have been provided by others, and have not been verified by Jensen Precast. Contractor to verify all dimensions and elevations prior to installation.
- These layout drawings are intended to show overall system design only. All concrete component thicknesses, dimensions, lengths and joint orientations may vary across Jensen Precast's manufacturing facilities and are subject to change pending final design. Contractor to confirm all information prior to installation.
- System design criteria has been provided to Jensen Precast. Others are responsible for verification that system meets the intended application.
- Foundation, subgrade and backfill to be designed by others.
- For complete design and product information, or custom design conditions, please contact Jensen Precast.

**JENSEN** PUMP STATIONS

521 DUNN CIRCLE, SPARKS, NV 89431  
www.jensenwaterresources.com  
(855) 468-5600

©2018 Jensen Precast - All rights reserved.  
All materials appearing as Jensen Precast documents and the like are proprietary work product and are protected under U.S. copyright and other laws.  
Unless in conjunction with business conducted with Jensen Precast, any use of Jensen Precast work product without express, written consent is prohibited, and recipient is prohibited from distributing any and all work product to non-approved third parties under penalty of civil action.

DESCRIPTION:		48" DIA. OPEN CHANNEL GRINDER		REV:
PART NUMBER:		48-OC-G		SHEET:
CREATED:		DRAWN BY: C. Purdie		2 OF 2
		MODIFIED: 2/21/2022		