

6'-0" x 12'-0" EDISON VAULT x 7'-0" DEEP

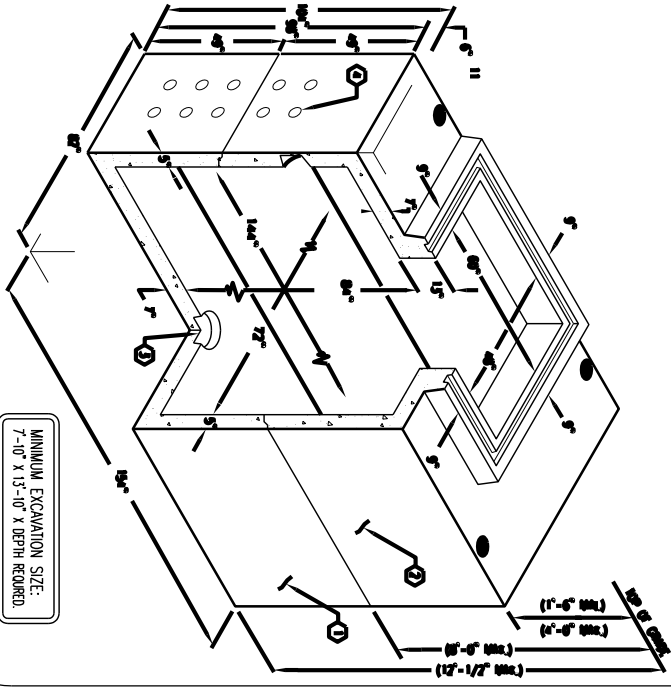
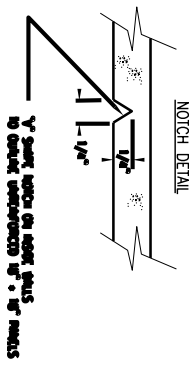
NOTES:

1. WALL EXPOSED IN ACCORDANCE WITH APPROVED PROJECT CONTRACT. CONCRETE SHALL BE CAST IN PLACE AND FINISHED WITH 1/2" SAND STRIP AND 1-1/2" STEEL MANUFACTURED PER CALC. 211004.
2. WALL TO BE PLACED ON A MIN. 6" BAY OF CONCRETE FOUNDATION.
3. WALL OF CONCRETE OVER ROOF SECTION IS 1'-6" TO 2'-0".
4. ALL WALLS AND CORNERS TO BE FINISHED WITH BRICK PAINT.
5. STRUCTURE SHALL BE APPROVED BY LOS ANGELES COUNTY ROAD AND BRIDGE DEPARTMENT.
6. FOLLOWING MATERIALS TO BE SUBMITTED WITH SHALL:
  - (a) 1/8" ± 6" COMPACTED 3" BATS (4 REQ'D)
  - (b) 1/8" ± 1 3/4" CONSOLID. CORSET (50 FT. REQ'D)

GENERAL NOTES:

1. Minimum soil bearing capacity is hereby assumed to be 2000 P.S.F. unless otherwise determined by a geotechnical report that shall be provided to Jensen Precast by the end user. Jensen Precast shall not be responsible for the soil bearing capacity. The user shall provide the geotechnical report to Jensen Precast.
2. The design of the vault shall be in accordance with the design of the vault shown on the drawings. The user shall provide the geotechnical report to Jensen Precast.
3. The design of the vault shall be in accordance with the design of the vault shown on the drawings. The user shall provide the geotechnical report to Jensen Precast.
4. The design of the vault shall be in accordance with the design of the vault shown on the drawings. The user shall provide the geotechnical report to Jensen Precast.
5. The design of the vault shall be in accordance with the design of the vault shown on the drawings. The user shall provide the geotechnical report to Jensen Precast.
6. The design of the vault shall be in accordance with the design of the vault shown on the drawings. The user shall provide the geotechnical report to Jensen Precast.
7. The design of the vault shall be in accordance with the design of the vault shown on the drawings. The user shall provide the geotechnical report to Jensen Precast.
8. The design of the vault shall be in accordance with the design of the vault shown on the drawings. The user shall provide the geotechnical report to Jensen Precast.
9. The design of the vault shall be in accordance with the design of the vault shown on the drawings. The user shall provide the geotechnical report to Jensen Precast.
10. The design of the vault shall be in accordance with the design of the vault shown on the drawings. The user shall provide the geotechnical report to Jensen Precast.
11. The design of the vault shall be in accordance with the design of the vault shown on the drawings. The user shall provide the geotechnical report to Jensen Precast.
12. The design of the vault shall be in accordance with the design of the vault shown on the drawings. The user shall provide the geotechnical report to Jensen Precast.
13. The design of the vault shall be in accordance with the design of the vault shown on the drawings. The user shall provide the geotechnical report to Jensen Precast.
14. The design of the vault shall be in accordance with the design of the vault shown on the drawings. The user shall provide the geotechnical report to Jensen Precast.
15. The design of the vault shall be in accordance with the design of the vault shown on the drawings. The user shall provide the geotechnical report to Jensen Precast.
16. The design of the vault shall be in accordance with the design of the vault shown on the drawings. The user shall provide the geotechnical report to Jensen Precast.
17. The design of the vault shall be in accordance with the design of the vault shown on the drawings. The user shall provide the geotechnical report to Jensen Precast.
18. The design of the vault shall be in accordance with the design of the vault shown on the drawings. The user shall provide the geotechnical report to Jensen Precast.
19. The design of the vault shall be in accordance with the design of the vault shown on the drawings. The user shall provide the geotechnical report to Jensen Precast.
20. The design of the vault shall be in accordance with the design of the vault shown on the drawings. The user shall provide the geotechnical report to Jensen Precast.

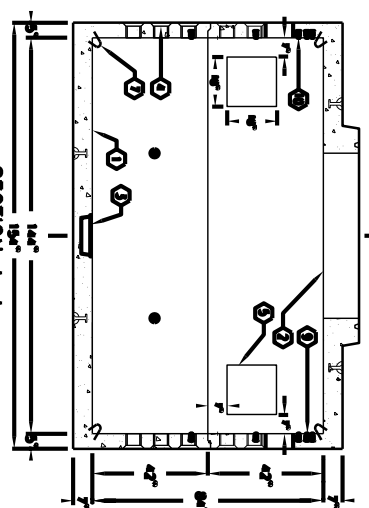
1. WALL EXPOSED IN ACCORDANCE WITH APPROVED PROJECT CONTRACT. CONCRETE SHALL BE CAST IN PLACE AND FINISHED WITH 1/2" SAND STRIP AND 1-1/2" STEEL MANUFACTURED PER CALC. 211004.
2. WALL TO BE PLACED ON A MIN. 6" BAY OF CONCRETE FOUNDATION.
3. WALL OF CONCRETE OVER ROOF SECTION IS 1'-6" TO 2'-0".
4. ALL WALLS AND CORNERS TO BE FINISHED WITH BRICK PAINT.
5. STRUCTURE SHALL BE APPROVED BY LOS ANGELES COUNTY ROAD AND BRIDGE DEPARTMENT.
6. FOLLOWING MATERIALS TO BE SUBMITTED WITH SHALL:
  - (a) 1/8" ± 6" COMPACTED 3" BATS (4 REQ'D)
  - (b) 1/8" ± 1 3/4" CONSOLID. CORSET (50 FT. REQ'D)
7. THE DESIGN OF THE VAULT SHALL BE IN ACCORDANCE WITH THE DESIGN OF THE VAULT SHOWN ON THE DRAWINGS. THE USER SHALL PROVIDE THE GEOTECHNICAL REPORT TO JENSEN PRECAST.
8. THE DESIGN OF THE VAULT SHALL BE IN ACCORDANCE WITH THE DESIGN OF THE VAULT SHOWN ON THE DRAWINGS. THE USER SHALL PROVIDE THE GEOTECHNICAL REPORT TO JENSEN PRECAST.
9. THE DESIGN OF THE VAULT SHALL BE IN ACCORDANCE WITH THE DESIGN OF THE VAULT SHOWN ON THE DRAWINGS. THE USER SHALL PROVIDE THE GEOTECHNICAL REPORT TO JENSEN PRECAST.
10. THE DESIGN OF THE VAULT SHALL BE IN ACCORDANCE WITH THE DESIGN OF THE VAULT SHOWN ON THE DRAWINGS. THE USER SHALL PROVIDE THE GEOTECHNICAL REPORT TO JENSEN PRECAST.
11. THE DESIGN OF THE VAULT SHALL BE IN ACCORDANCE WITH THE DESIGN OF THE VAULT SHOWN ON THE DRAWINGS. THE USER SHALL PROVIDE THE GEOTECHNICAL REPORT TO JENSEN PRECAST.
12. THE DESIGN OF THE VAULT SHALL BE IN ACCORDANCE WITH THE DESIGN OF THE VAULT SHOWN ON THE DRAWINGS. THE USER SHALL PROVIDE THE GEOTECHNICAL REPORT TO JENSEN PRECAST.
13. THE DESIGN OF THE VAULT SHALL BE IN ACCORDANCE WITH THE DESIGN OF THE VAULT SHOWN ON THE DRAWINGS. THE USER SHALL PROVIDE THE GEOTECHNICAL REPORT TO JENSEN PRECAST.
14. THE DESIGN OF THE VAULT SHALL BE IN ACCORDANCE WITH THE DESIGN OF THE VAULT SHOWN ON THE DRAWINGS. THE USER SHALL PROVIDE THE GEOTECHNICAL REPORT TO JENSEN PRECAST.
15. THE DESIGN OF THE VAULT SHALL BE IN ACCORDANCE WITH THE DESIGN OF THE VAULT SHOWN ON THE DRAWINGS. THE USER SHALL PROVIDE THE GEOTECHNICAL REPORT TO JENSEN PRECAST.
16. THE DESIGN OF THE VAULT SHALL BE IN ACCORDANCE WITH THE DESIGN OF THE VAULT SHOWN ON THE DRAWINGS. THE USER SHALL PROVIDE THE GEOTECHNICAL REPORT TO JENSEN PRECAST.
17. THE DESIGN OF THE VAULT SHALL BE IN ACCORDANCE WITH THE DESIGN OF THE VAULT SHOWN ON THE DRAWINGS. THE USER SHALL PROVIDE THE GEOTECHNICAL REPORT TO JENSEN PRECAST.
18. THE DESIGN OF THE VAULT SHALL BE IN ACCORDANCE WITH THE DESIGN OF THE VAULT SHOWN ON THE DRAWINGS. THE USER SHALL PROVIDE THE GEOTECHNICAL REPORT TO JENSEN PRECAST.
19. THE DESIGN OF THE VAULT SHALL BE IN ACCORDANCE WITH THE DESIGN OF THE VAULT SHOWN ON THE DRAWINGS. THE USER SHALL PROVIDE THE GEOTECHNICAL REPORT TO JENSEN PRECAST.
20. THE DESIGN OF THE VAULT SHALL BE IN ACCORDANCE WITH THE DESIGN OF THE VAULT SHOWN ON THE DRAWINGS. THE USER SHALL PROVIDE THE GEOTECHNICAL REPORT TO JENSEN PRECAST.



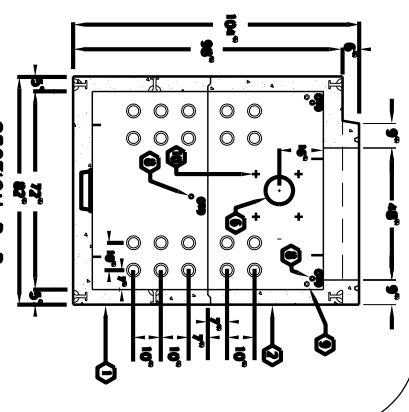
MINIMUM EXCAVATION SIZE:  
7'-10" X 13'-10" X DEPTH REQUIRED

K612-FV84-11

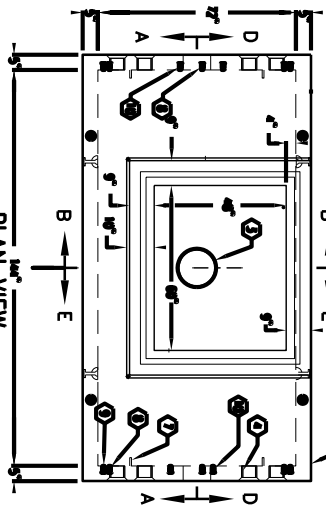
JENSEN PRECAST  
FOR DESIGN SPECS. USE 4002 9812 (400.3)  
03-01-02



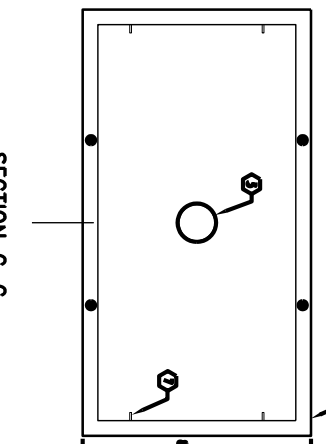
SECTION A-A



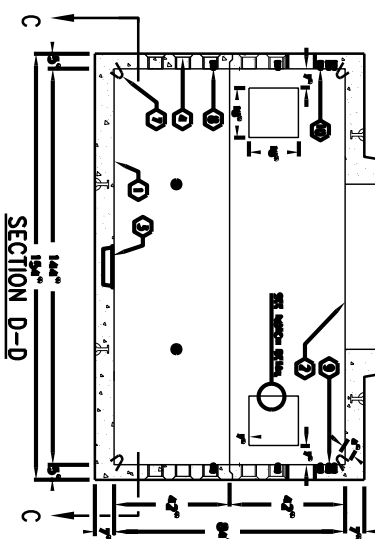
SECTION B-B



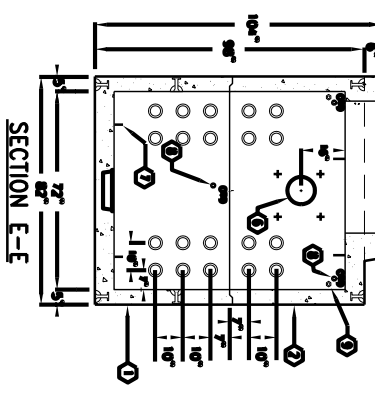
PLAN VIEW



SECTION C-C



SECTION D-D



SECTION E-E

JENSEN PRECAST

1	2	3	4	5	6	7	8	9	10	11	12	13	14	15	16	17	18	19	20	

K612-FV84-11  
FOR DESIGN SPECS. USE 4002 9812 (400.3)  
03-01-02