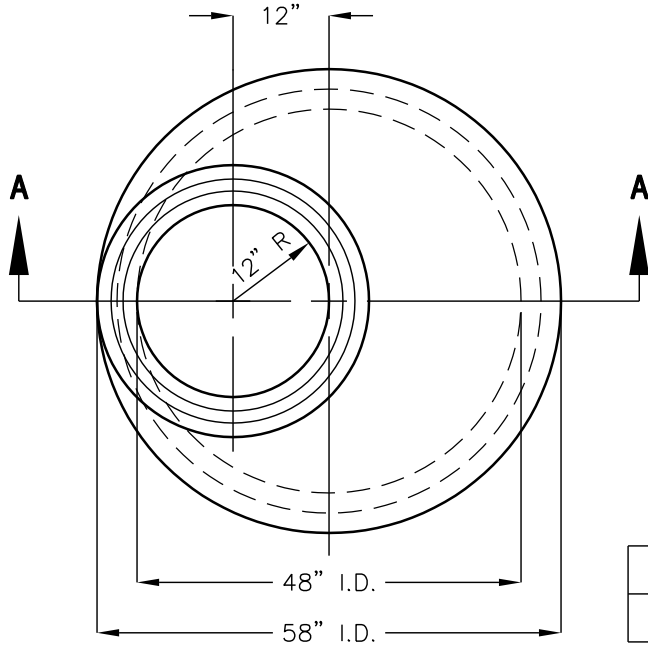
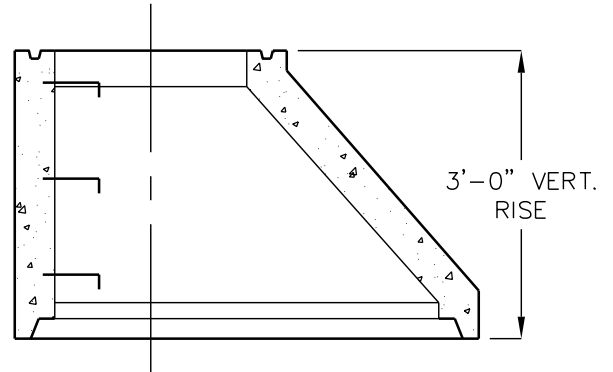


48" I.D. 5" WALL 36" ECCENTRIC CONE



**PLAN VIEW
4858 CONE**

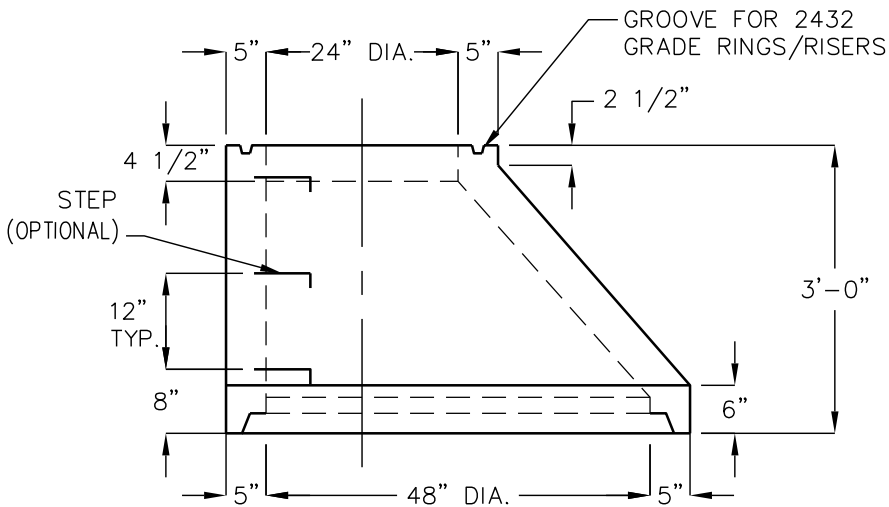


SECTION A-A

APPROX. WT.

4858EC24-36 ECC CONE	2250 LBS.
4858EC24-36S ECC CONE W/STEP HOLES	2250 LBS.

**CONFORMS TO ASTM SPECS C-478
and AASHTO No. M199.**



SIDE VIEW

FOR COMPLETE DESIGN,
AND PRODUCT INFORMATION,
CONTACT JENSEN PRECAST.