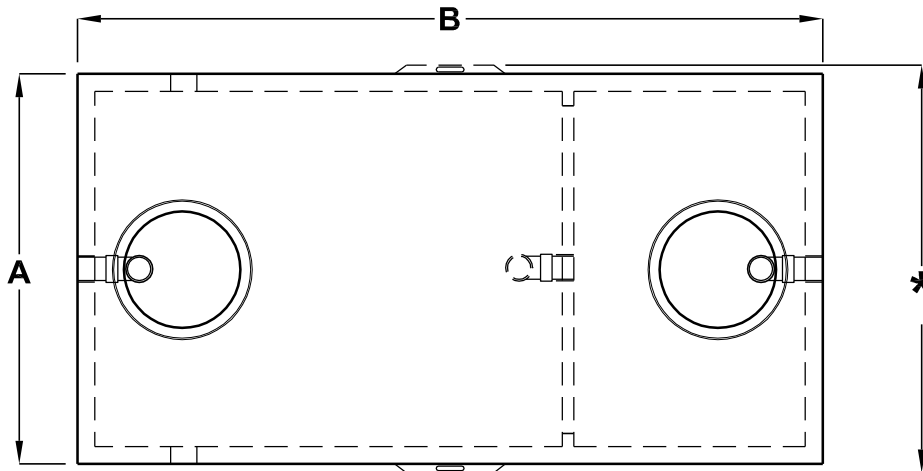
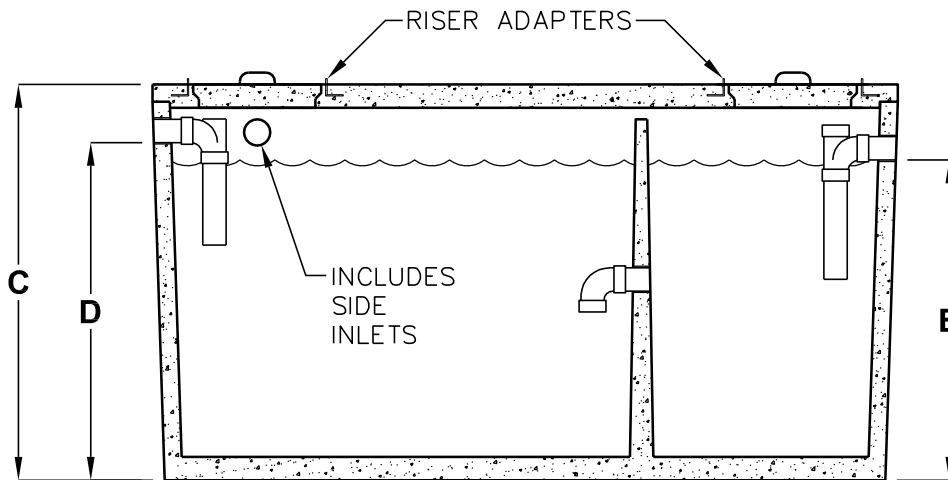


RESIDENTIAL SEPTIC TANKS

LISTED BY UPC®



TOP VIEW



SIDE VIEW

MODEL NUMBER	LIQUID CAPACITY (GALLONS)	DIM A	DIM B	DIM C	DIM D	DIM E	MINIMUM EXCAVATION WIDTH*	MINIMUM EXCAVATION LENGTH
JS-1000	1000	5'-1"	8'-2"	5'-8"	4'-10"	4'-7"	6'-10"	9'-2"
JS-1200	1200	5'-9"	8'-6"	5'-8"	4'-10"	4'-7"	7'-6"	9'-6"
JS-1500	1500	5'-7"	10'-8"	5'-8"	4'-10"	4'-7"	7'-4"	11'-8"
JS-2000	2000	4'-11"	15'-11"	5'-8"	4'-10"	4'-7"	6'-8"	16'-11"
JS-2500	2500	5'-9"	16'-10"	5'-8"	4'-10"	4'-7"	7'-6"	17'-10"
JS-3000	3000	5'-9"	16'-10"	6'-5"	5'-7"	5'-4"	7'-6"	17'-10"

*OVERALL WIDTH CAN VARY WITH TANK MODEL. USE EXCAVATION WIDTH FOR SITE PLANNING.

DESIGN LOAD: NON-TRAFFIC WITH 3' EARTH COVER MAXIMUM AT 500 PSF.

FOR COMPLETE DESIGN AND PRODUCT INFORMATION CONTACT JENSEN PRECAST.

Jensen Precast reserves the right to make changes to product design and/or dimensions without notice. Please contact Jensen Precast whenever necessary for confirmation or advice on product design.

