

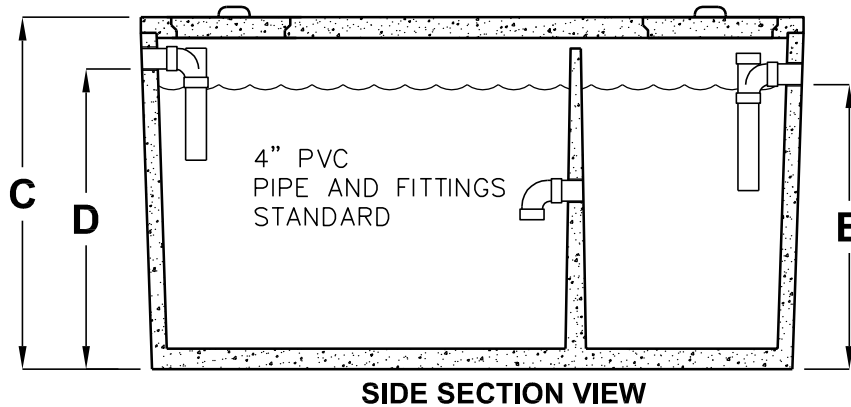
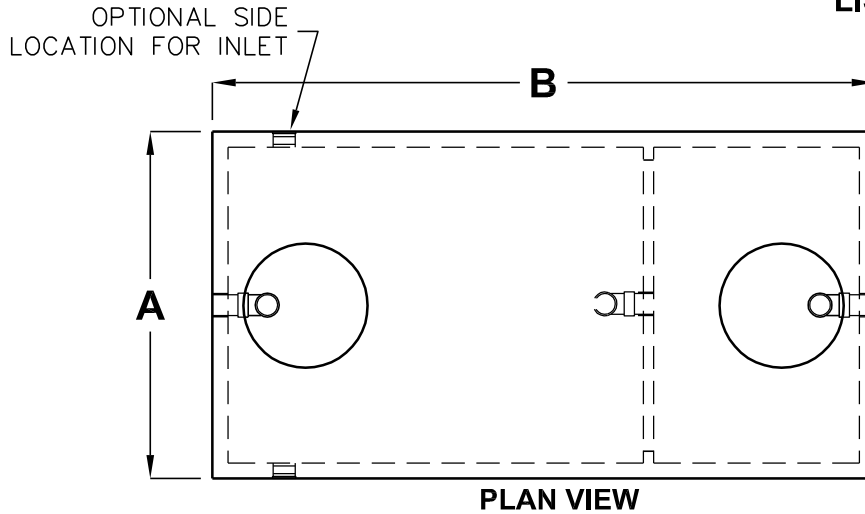
RESIDENTIAL SEPTIC TANKS

HAWAII

MODELS JS1000-JST5000

NON-TRAFFIC RATED

LISTED BY UPC®



MODEL NUMBER	LIQUID CAPACITY (GALLONS)	WIDTH A	OVERALL LENGTH B	TANK HEIGHT C	INLET D	OUTLET E	MINIMUM EXCAVATION WIDTH	MINIMUM EXCAVATION LENGTH	TANK WEIGHT LBS.
JS-1000	1000	5'-1"	8'-2"	5'-8"	4'-10"	4'-7"	6'-1"	9'-2"	9,400
JS-1200	1200	5'-9"	8'-6"	5'-8"	4'-10"	4'-7"	6'-9"	9'-6"	10,600
JS-1250	1250	6'-4"	9'-2"	5'-1"	4'-2"	3'-11"	8'-0"	11'-0"	10,500
JST-1500	2000	6'-0"	10'-9"	5'-5"	4'-7"	4'-4"	7'-0"	12'-0"	12,000

DESIGN LOAD: NON-TRAFFIC WITH DRY SOIL CONDITIONS (WATER TABLE BELOW TANK)
EARTH COVER NOT TO EXCEED 500 PSF OR 3'.

BEDDING NOTE: SUITABLE SUB-BASE BEDDED WITH GRANULAR MATERIAL SHALL BE PREPARED TO HANDLE ANTICIPATED LOADS.

EXTERIOR AND INTERIOR CONCRETE SURFACES TO BE COATED WITH AN APPROVED BITUMINOUS MATERIAL.

FOR COMPLETE DESIGN AND PRODUCT INFORMATION
CONTACT JENSEN PRECAST.