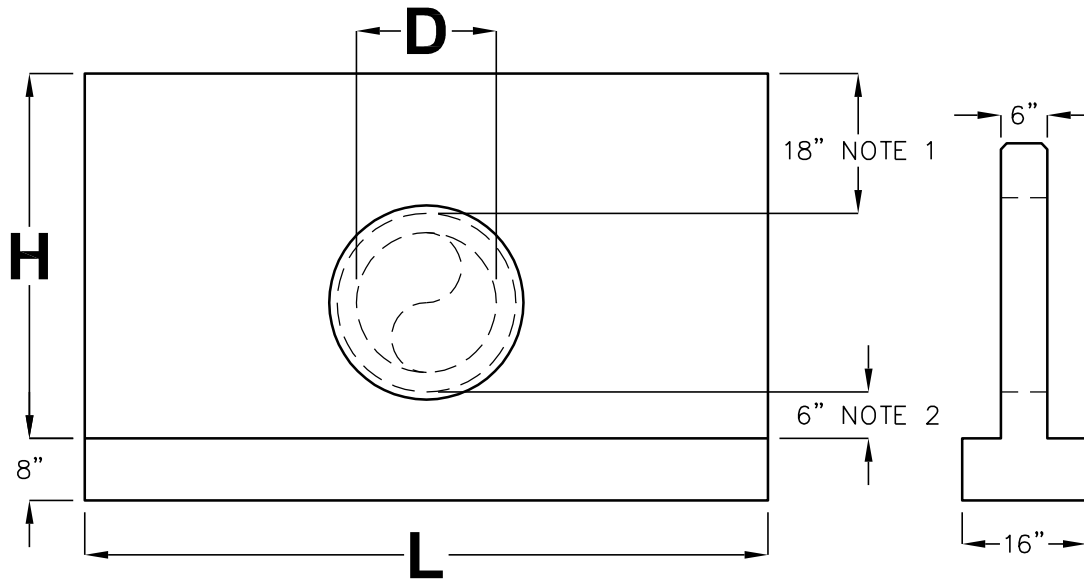


# HEADWALL SINGLE PIPE

MAG 501-1



| <b>D</b><br>NOMINAL PIPE<br>INSIDE DIAMETER | <b>H</b> | <b>L</b> | <b>APPROX.<br/>WEIGHT LBS</b> |
|---|----------|----------|-------------------------------|
| 12"   | 3'-4"    | 4'-0"    | 1,416                         |
| 15"   | 3'-8"    | 5'-4"    | 1,980                         |
| 18"   | 3'-11"   | 7'-4"    | 2,870                         |
| 21"   | 4'-3"    | 8'-0"    | 3,231                         |
| 24"   | 4'-6"    | 8'-0"    | 3,295                         |
| 30"   | 5'-1"    | 10'-8"   | 4,749                         |
| 36"   | 5'-8"    | 13'-4"   | 6,388                         |
| 42"   | 6'-3"    | 16'-0"   | 8,190                         |

NOTES:

1. 18" UNLESS OTHERWISE ORDERED.
2. 6" UNLESS OTHERWISE ORDERED.
3. CONSTRUCTION DIMENSIONS BASED ON RCP B-WALL PIPE.

FOR COMPLETE DESIGN AND PRODUCT INFORMATION CONTACT JENSEN PRECAST.

Jensen Precast reserves the right to make changes to product design and/or dimensions without notice. Please contact Jensen Precast whenever necessary for confirmation or advice on product design.

