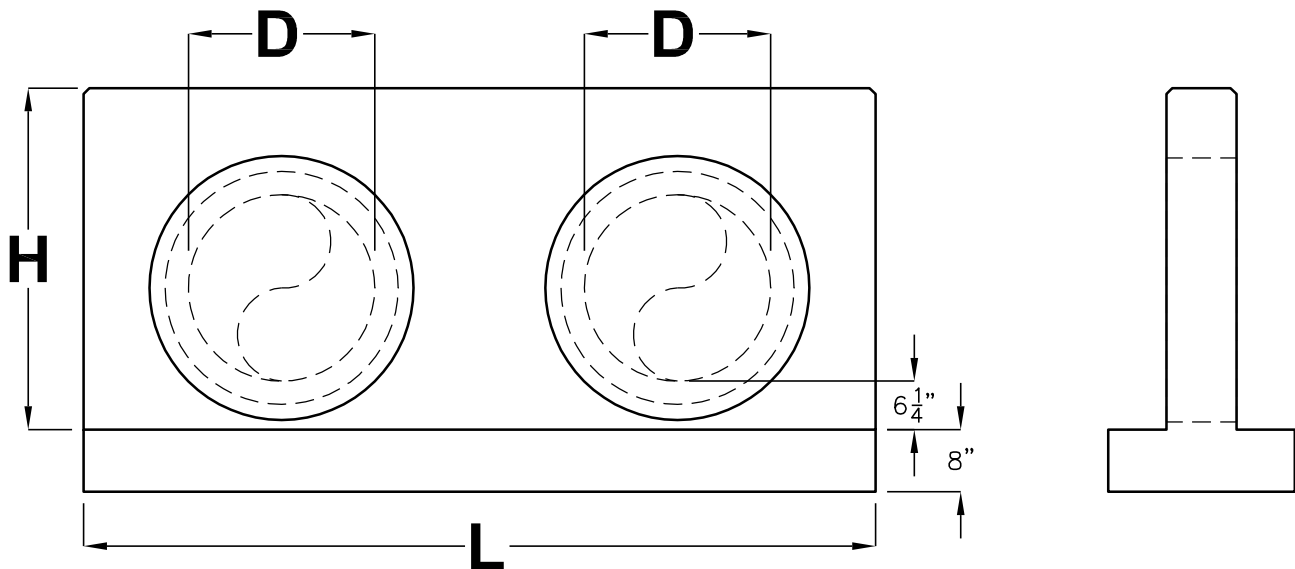


# HEADWALL DOUBLE PIPE

CALTRANS D89



<b>D</b> NOMINAL PIPE INSIDE DIAMETER	<b>H</b>	<b>L</b>	<b>APPROX. WEIGHT LBS</b>
12"	2'-8"	8'-0"	3,882
15"	2'-11"	9'-6"	4,833
18"	3'-2"	10'-6"	5,576
21"	3'-5"	11'-6"	6,360
24"	3'-8"	12'-6"	7,185
27"	3'-11"	14'-0"	8,372
30"	4'-2"	15'-0"	9,295
33"	4'-5"	16'-0"	10,259
36"	4'-8"	17'-0"	11,265
39"	4'-11"	18'-0"	12,312
42"	5'-2"	19'-0"	13,401
45"	5'-5"	20'-0"	14,531
48"	5'-8"	21'-0"	15,703
51"	5'-11"	22'-6"	17,349
54"	6'-2"	23'-6"	18,617

DESIGNED TO COMPLY WITH CALTRANS STD D89.

FOR COMPLETE DESIGN AND PRODUCT INFORMATION  
CONTACT JENSEN PRECAST.

Jensen Precast reserves the right to make changes to product design and/or dimensions without notice. Please contact Jensen Precast whenever necessary for confirmation or advice on product design.