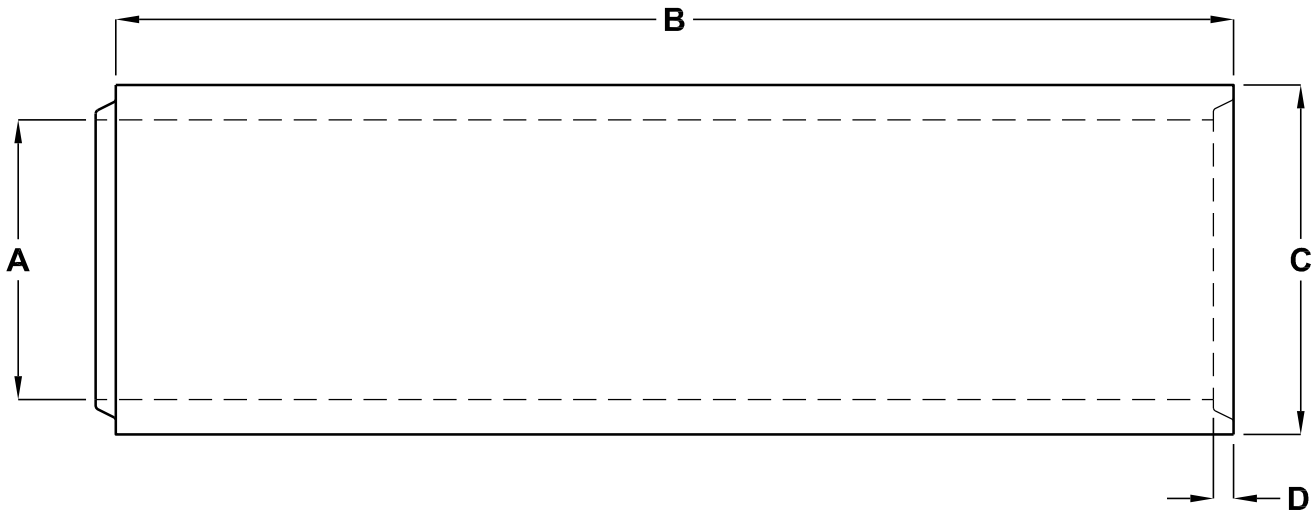


REINFORCED CONCRETE PIPE

TONGUE AND GROOVE
ASTM C-76
CLASS I-IV



'A' INSIDE DIAMETER		'B' LENGTH	'C' PIPE O.D.	'D' JOINT DEPTH	WALL THICKNESS	WEIGHT
15"	375mm	8'	19.50"	1.73"	2-1/4"	1,020 LBS
18"	450mm	8'	23"	1.73"	2-1/2"	1,350 LBS
24"	600mm	8'	30"	1.73"	3"	2,150 LBS

REINFORCED CONCRETE PIPE CONFORMS TO ASTM C-76, AASHTO M-170.

FOR COMPLETE DESIGN AND PRODUCT INFORMATION
CONTACT JENSEN PRECAST.

12/21/07
RCP_15 TO 24 ID_NONV_A.dwg
© 2007 Jensen Precast

Jensen Precast reserves the right to make changes to product design and/or dimensions without notice. Please contact Jensen Precast whenever necessary for confirmation or advice on product design.

JENSEN
PRECAST