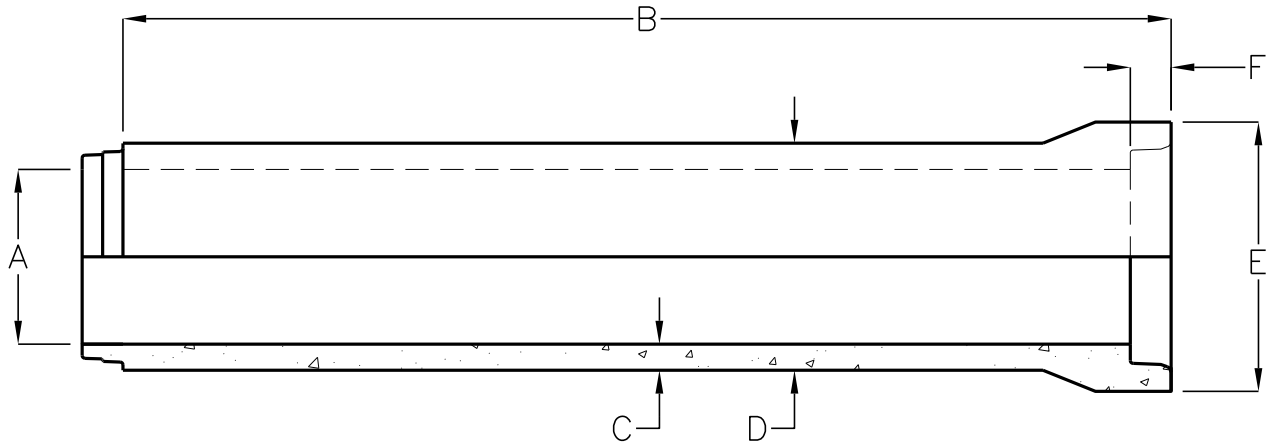


12", 15", 18", 24", 30" DIAMETER REINFORCED CONCRETE "B" WALL PIPE PROFILE GASKET JOINT - SOUTHERN NEVADA



'A' INSIDE DIAMETER	'B' LAYING LENGTH	'C' WALL THICKNESS	'D' BARREL O.D.	'E' BELL O.D.	'F' JOINT DEPTH	WALL TYPE	D-LOAD CLASS	WEIGHT LBS
12"	8'-0"	2"	16"	19 1/2"	3 1/2"	B	1350-III	804
							2000-IV	
							3000-V	
15"	8'-0"	2 1/4"	19 1/2"	23 1/8"	3 1/2"	B	1350-III	1,016
							2000-IV	
							3000-V	
18"	8'-0"	2 1/2"	23"	26 5/8"	3 1/2"	B	1350-III	1,344
							2000-IV	
							3000-V	
24"	8'-0"	3"	30"	35 1/2"	3 1/2"	B	1350-III	2,120
							2000-IV	
							3000-V	
30"	7'-6"	3 1/2"	37"	39 1/2"	3 1/2"	B	1350-III	2,880
							2000-IV	
							3000-V	

REINFORCED CONCRETE PIPE CONFORMS
TO ASTM C-76, AASHTO M-170, AASHTO M-198 AND NEVADA DOT.

FOR COMPLETE DESIGN AND PRODUCT INFORMATION
CONTACT JENSEN PRECAST.

B Jensen Precast reserves the right to make changes to product design and/or dimensions without notice.
Please contact Jensen Precast whenever necessary for confirmation or advice on product design.