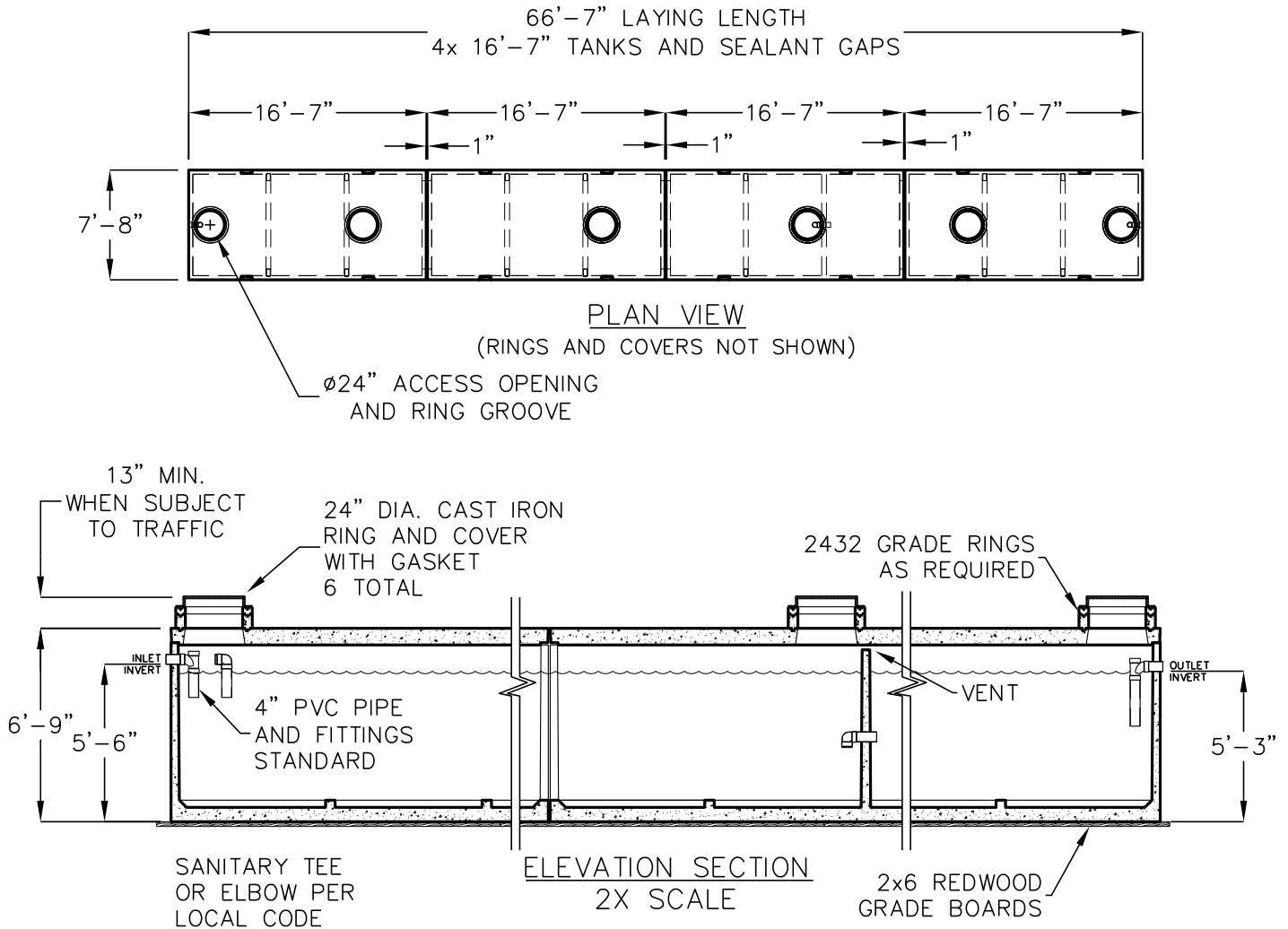


16,000 GALLON BATTERY SAND-OIL INTERCEPTOR

MODEL 4xJZ4000-SO



OPERATING CAPACITY: 16,000 GALLONS.

DESIGN LOAD: H-20 TRAFFIC WITH DRY SOIL CONDITIONS
(WATER LEVEL BELOW TANK) AND 13 INCHES TO 5 FEET OF SOIL COVER.

SUITABLE SUB-BASE BEDDED WITH GRANULAR MATERIAL SHALL BE PREPARED TO
HANDLE ANTICIPATED LOADS.

FOR COMPLETE DESIGN AND PRODUCT INFORMATION CONTACT JENSEN PRECAST.

C Jensen Precast reserves the right to make changes to product design and/or dimensions without notice.
Please contact Jensen Precast whenever necessary for confirmation or advice on product design.

8/28/2019
16000-SO_4XJZ4000.DWG
©2019

JENSEN
PRECAST EST. 1968