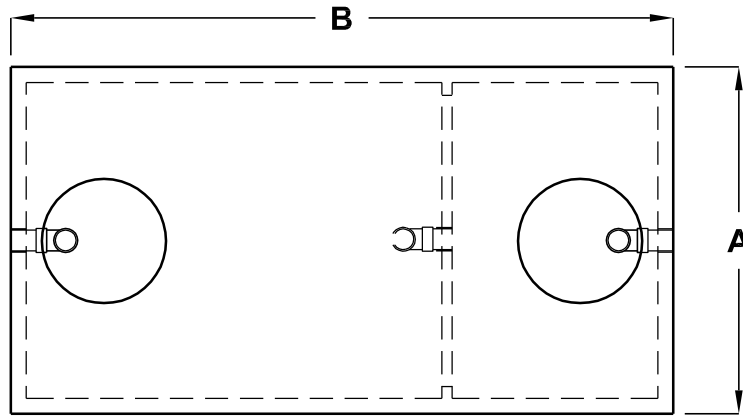
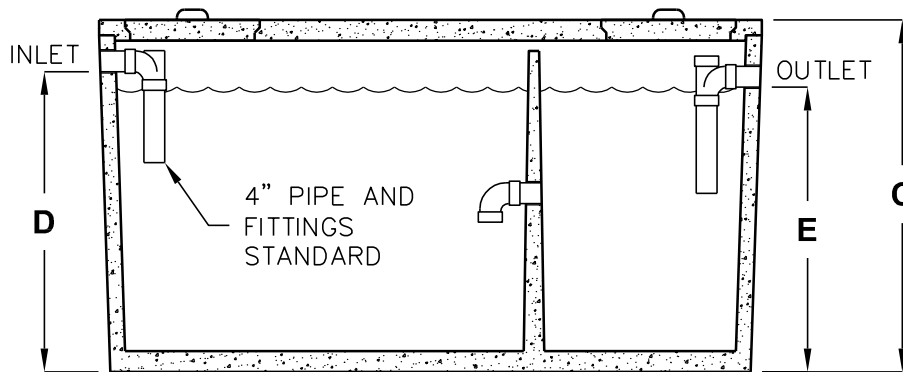


RESIDENTIAL SEPTIC TANKS

LISTED BY UPC®
SOUTHERN NEVADA



TOP VIEW



SIDE SECTION VIEW

MODEL NUMBER	LIQUID CAPACITY (GALLONS)	DIM A	DIM B	DIM C	DIM D	DIM E	MINIMUM EXCAVATION WIDTH	MINIMUM EXCAVATION LENGTH
JSL-1000	1000	5'-8"	8'-6"	5'-½"	4'-3"	4'-0"	6'-8"	9'-6"
JS-1200	1200	5'-9"	8'-6"	5'-8"	4'-10"	4'-7"	6'-9"	9'-6"
JS-1500	1500	5'-7"	10'-8"	5'-8"	4'-10"	4'-7"	6'-7"	11'-8"
JS-2000	2000	4'-11"	15'-11"	5'-8"	4'-10"	4'-7"	5'-11"	16'-11"
JS-2500	2500	5'-9"	16'-10"	5'-8"	4'-10"	4'-7"	6'-9"	17'-10"
JS-3000	3000	5'-9"	16'-10"	6'-5"	5'-7"	5'-4"	6'-9"	17'-10"

DESIGN LOAD: NON-TRAFFIC WITH DRY SOIL CONDITIONS (WATER TABLE BELOW TANK)
EARTH COVER NOT TO EXCEED 500 PSF OR 3'.

BEDDING NOTE: THE EXCAVATION SHALL BE BEDDED WITH A SUITABLE GRANULAR MATERIAL AND SHALL BE COMPACTED TO 90% MAXIMUM DRY DENSITY, OR TO THE REQUIREMENTS OF THE PROJECT GEOTECHNICAL ENGINEER.

FOR COMPLETE DESIGN AND PRODUCT INFORMATION
CONTACT JENSEN PRECAST.