

# 4'-0" x 4'-0" SCG PARKWAY HANDHOLE (76-9402) x 48" DEEP

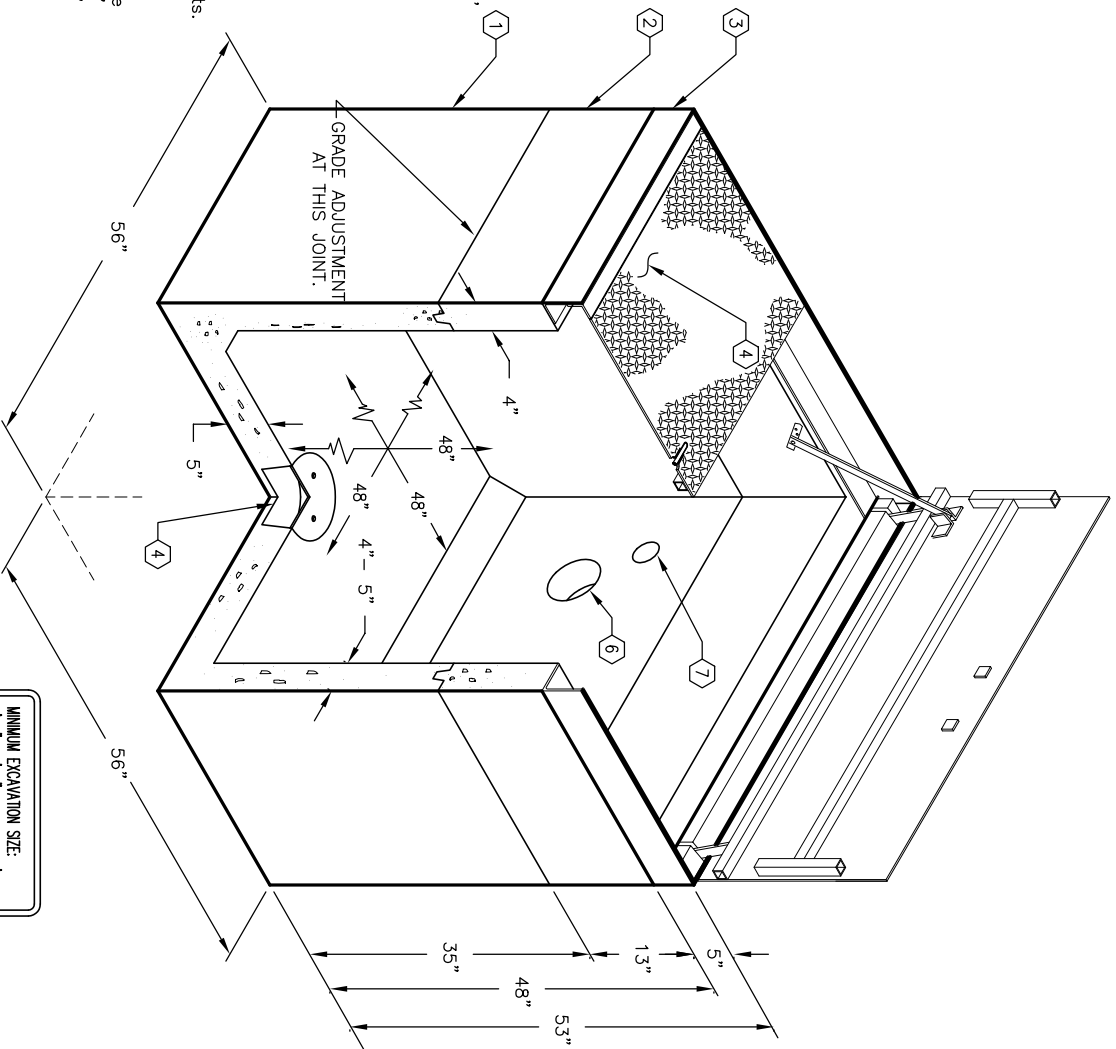
**NOTES:**

- DESIGNED IN ACCORDANCE WITH AASHTO H-20-44 BRIDGE LOADING USING 5,500 PSI [37.92MPa] COMPRESSIVE STRENGTH CONCRETE AND 60,000 PSI [413.2MPa] YIELD STRENGTH GRADE 60 A-706 STEEL REINFORCEMENT PER CALC. #31167.
  - COVER DESIGNED PER CALC. #31176.
  - SEE CALC. #31172 AND DRAWING NUMBER 300-162 FOR TRAFFIC APPLICATIONS.
  - VAULT TO BE PLACED ON A MIN. 6" BASE OF CRUSHER RUN FOR EASE OF INSTALLATION AND EVEN LOAD DISTRIBUTION.
- ORDERING INFORMATION:**
- K44-FH48-15PSR FOR ASSEMBLY AS SHOWN.  
 APPROVED FOR SO. CAL. GAS CO. SPEC. 76-9402  
 TOTAL WEIGHT OF ASSEMBLY IS 4,935 Lbs.

1. PB44F-B30-15, 30" BOTTOM SECTION, WT. 3,488 Lbs.
2. PB44-T13-15, 13" TOP SECTION, WT. 951 Lbs.
3. 5" GALVANIZED FRAME, F44-PB-GAS, WT. 176 Lbs.
4. CA44-PSGSR 2 PIECE GALVANIZED SPRING ASSISTED PARKWAY COVER ASSEMBLY (SC44-PSRGV) W/ GUARD BARS, SPECIAL CAMLOCKS, (2) LIFT HANDLES AND (1) 1/2" ALLEN BUTTON HEAD CAP SCREW, WT. 320 Lbs.
5. 12" x 13" DIA. SUMP x 4" DEEP (5000-489) LOCATE AS FOLLOWS:  
 BOTTOM SECTION (1) CORE MTD. W/RECESS, W/SUMP COVER. (08-2102)
6. 5" x 6" DIA. x 3 1/2" DEEP, LOCATE AS FOLLOWS:  
 BOTTOM SECTION (4) CORE MTD.  
 2" x 3" DIA. x 3 1/2" DEEP, LOCATE AS FOLLOWS:  
 BOTTOM SECTION (4) CORE MTD.
7. LADDER (SL-15-42) MOUNTED ON EITHER SIDE. (NOT SHOWN)
8. 1 5/8" x 1 5/8" UNISTRUT, CAST IN (4) PLACES
9. 1/2-35-T INSERT, LOCATE AS FOLLOWS: TOP SECTION (4) SURFACE MTD., (6) CORE MTD.; BOTTOM SECTION (2) CORE MTD.
10. 1/2" x 5" ADJUSTING BOLTS LOCATE AS FOLLOWS: BOTTOM SECTION (4) SURFACE MTD.;

**GENERAL NOTES:**

1. Minimum soil bearing capacity is hereby assumed to be 2000 PSF unless otherwise documented by a geotechnical report that shall be provided to Jensen Precast by the end user. Jensen Precast shall not be held responsible for the soil bearing capacity. Installation of Manholes, Vaults, Handholes, Meter Boxes etc. will be as per Jensen Installation procedures.
2. Structural modification to the Jensen line of products is not permitted without prior written approval from Jensen Engineering Department.
3. Do not scale the drawings, verify all dimensions including rough openings, if any discrepancies are found, notify the Jensen Engineer immediately.
4. The Jensen Engineer will interpret the intent of the drawings in case of possible conflict or discrepancy.
5. Permissible Variations: - The length, width, height, or dia. measurements of the structure when measured on the inside surfaces shall not deviate from design dimensions by more than the following:  
 Dimensions: Tolerance:  
 0 to 5 Feet 1/4"  
 5 to 10 Feet 3/8"  
 10 to 20 Feet as agreed upon between the supplier and purchaser.
6. Squariness Tolerance: The inside of the precast concrete component shall be square as determined by diagonal measurements. The difference between such measurements shall not exceed the following:  
 Measured Length: Allowable Difference  
 0 to 10 Feet 1/2"  
 10 to 20 Feet 3/4"  
 20 Feet and over as agreed upon between the supplier and purchaser.



MINIMUM EXCAVATION SIZE:  
 5'-6" x 5'-6" x DEPTH REQD.

## K44-FH48-15PSR

AUTOCAD REL. 14

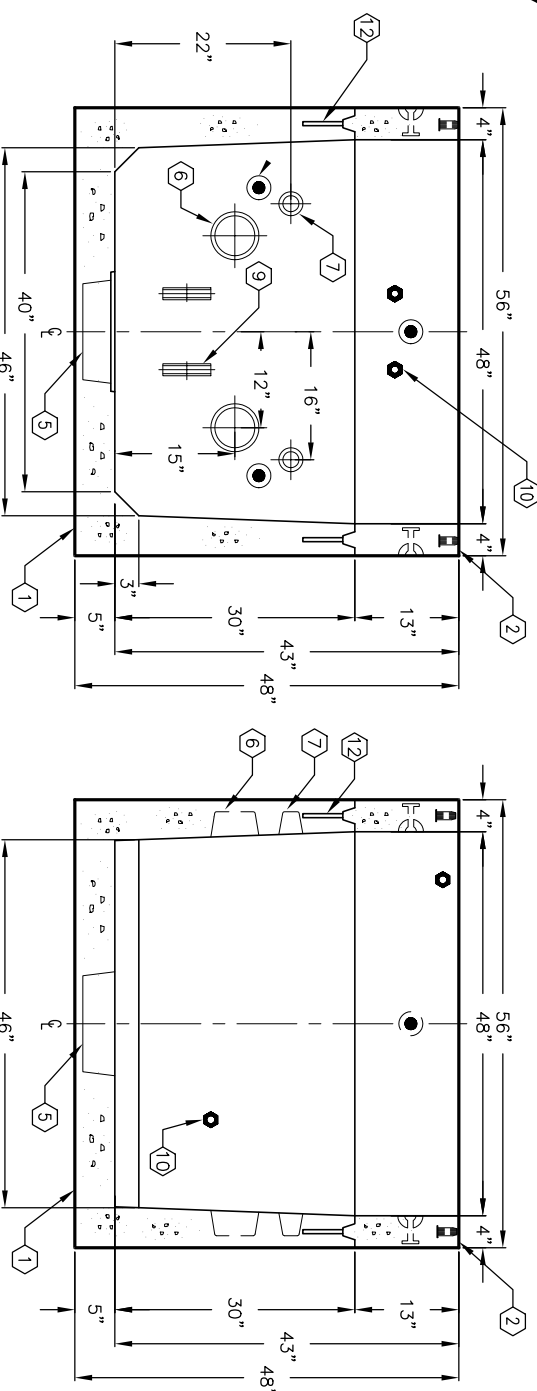
## JENSEN PRECAST

#	DATE	DESCRIPTION	BY

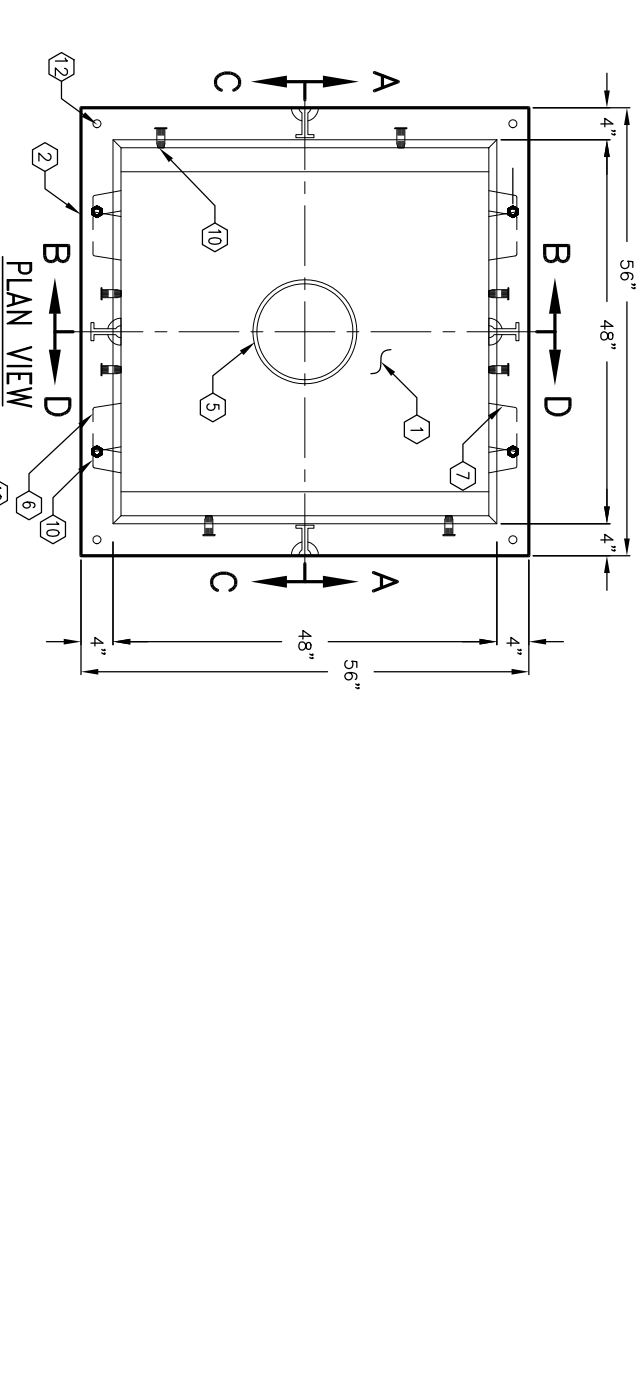
## K44-FH48-15PSR

PER SO. CAL. GAS CO. 76-9402

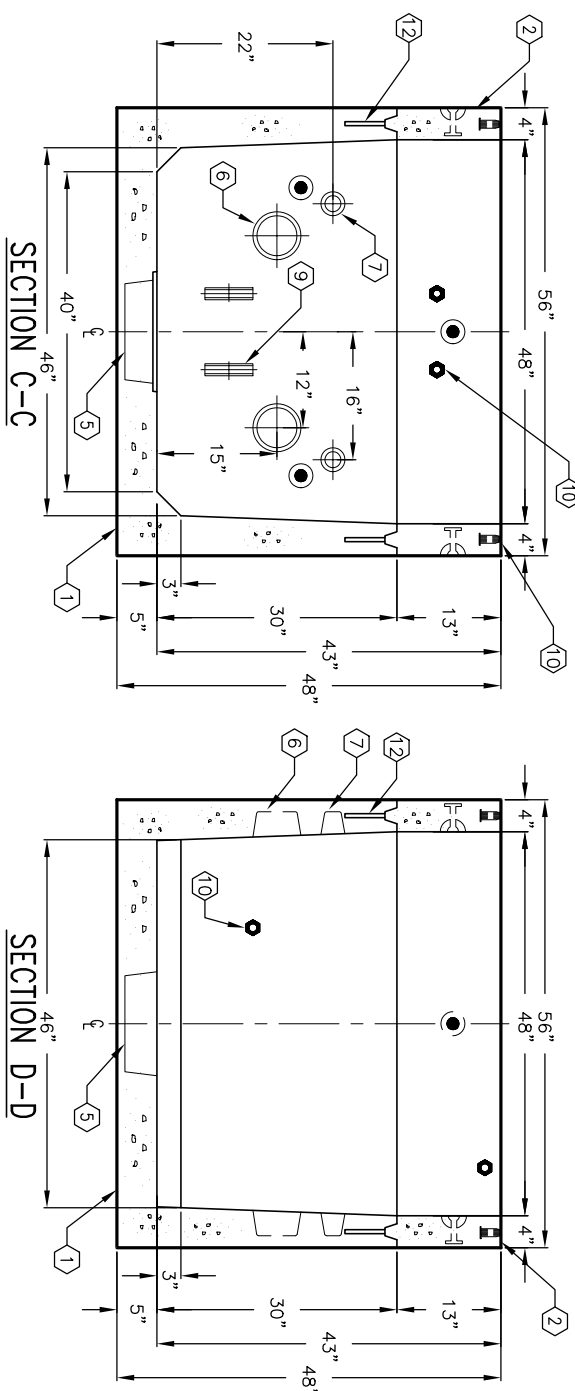
03-01-02



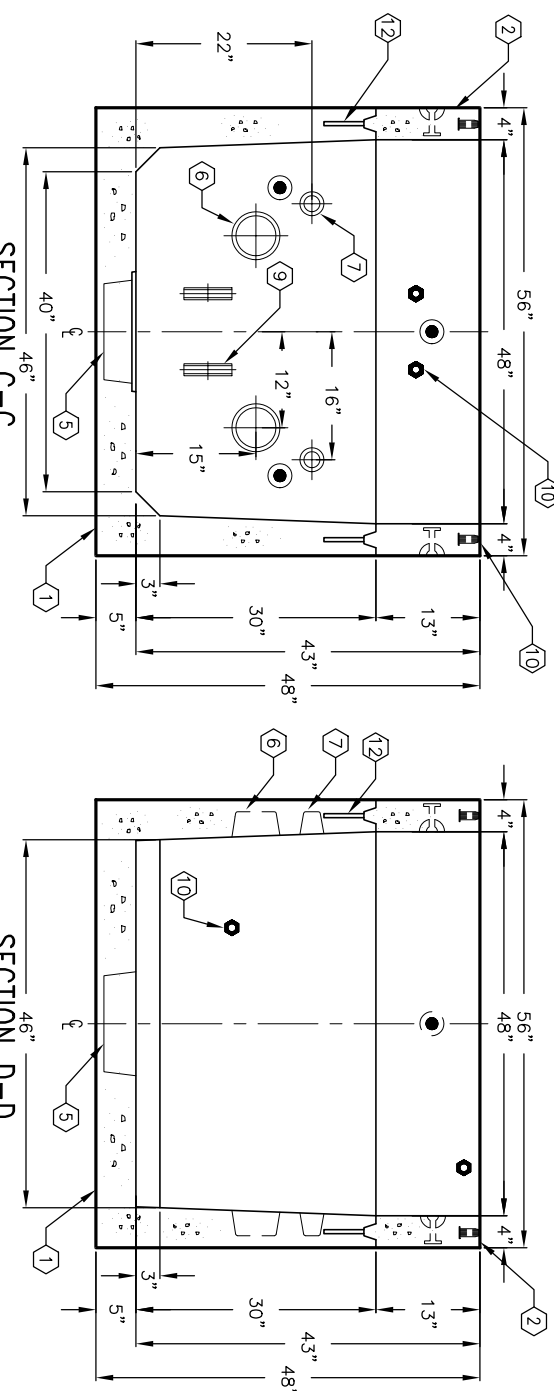
SECTION B-B



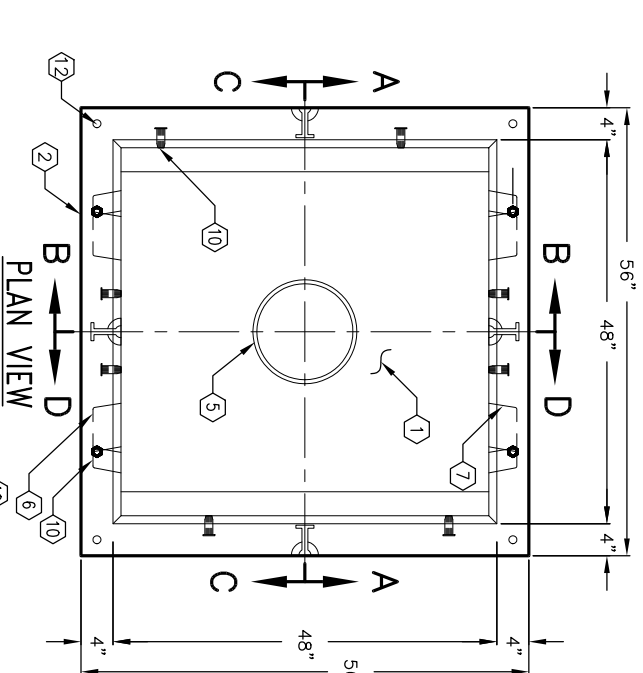
SECTION C-C



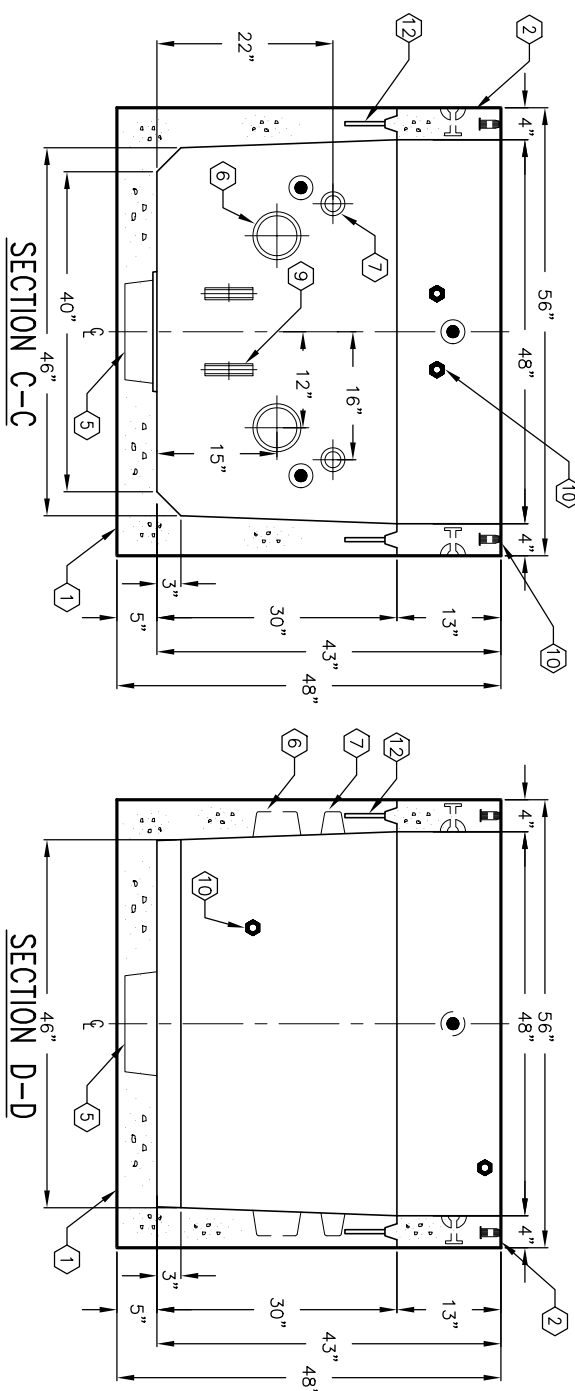
SECTION D-D



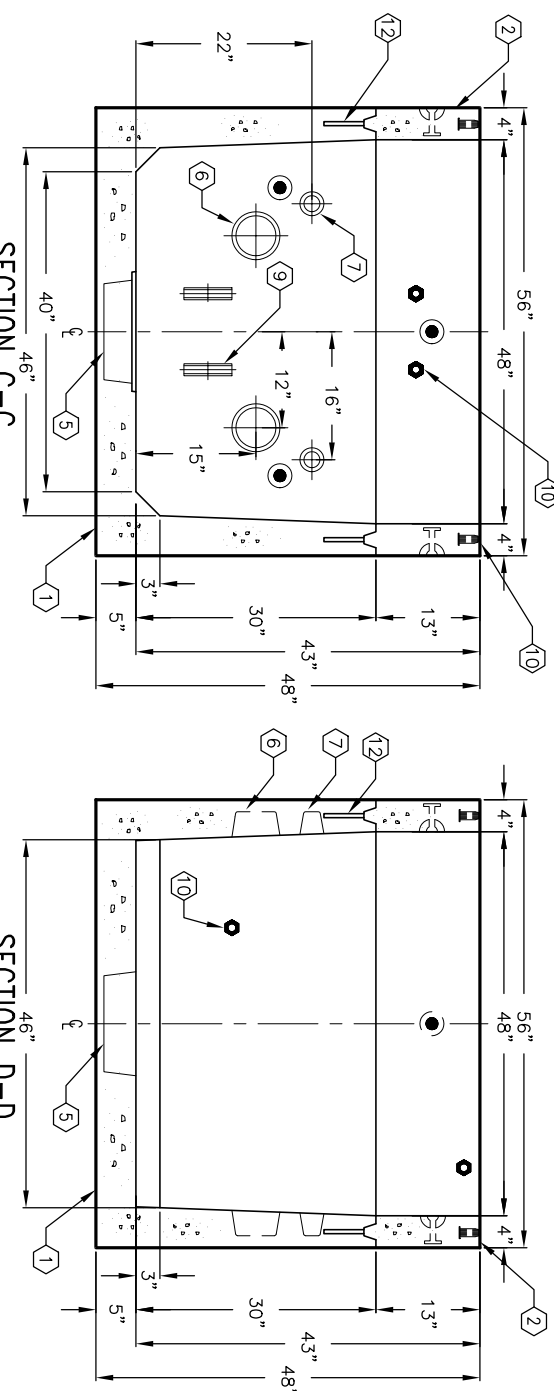
PLAN VIEW



SECTION C-C



SECTION D-D



PLAN VIEW

## JENSEN PRECAST

#	DATE	DESCRIPTION	BY

## K44-FH48-15PSR

PER SO. CAL. GAS CO. 76-9402

03-01-02