

6'-0" x 8'-6" EDISON TRANSFORMER PAD W/4'-0" x 7'-0" ENCLOSURE x 42" DEEP

NOTES:

- TRANSFORMER PAD AND ENCLOSURE ARE DESIGNED FOR PERMANENT INSTALLATION.
- FINISH FLOOR FINISH TO BE 2000 PSI COMPRESSIVE STRENGTH CONCRETE AND 60,000 P.S.I. (413.2 MPa) YIELD STRENGTH ASTM A-706 STEEL REINFORCEMENT PER CALC. #31655.
- COVER IS DESIGNED FOR PARKWAY LOADING PER WESTERN UNDERGROUND COMMITTEE (W.U.C. 3/6).
- ENCLOSURE TO BE PLACED ON A MIN. 6" BASE OF CRUSHER RUN FOR EVEN LOAD DISTRIBUTION AND EASE OF INSTALLATION.
- PAD AND ENCLOSURE DESIGNED FOR 7,500 LB. (TRANSFORMER) VERTICAL DEAD LOAD.

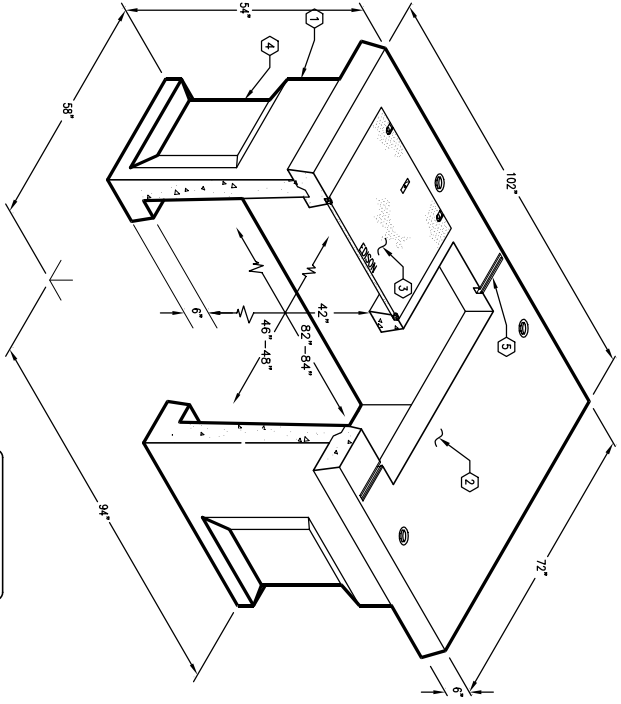
ORDERING INFORMATION:

K686-SB42-11 FOR ASSEMBLY AS SHOWN,
 APPROVED FOR: E.O. GALT, EDISON SPEC. UGS 530.1 (500 SB-2),
 TOTAL HEIGHT OF ASSEMBLY AS SHOWN IS 83.25ft.

GENERAL NOTES:

1. Minimum soil bearing capacity is hereby assumed to be 2000 P.S.F. for all applications. A geotechnical report that shall be provided to Jensen Precast by the end user, Jensen Precast will be responsible for the soil bearing capacity, installation of Manholes, Vaults, Handholes, Meter Boxes etc. will be as per Jensen installation.
2. Structural modification to the Jensen line of products is not permitted without prior written approval from Jensen.
3. Do not scale the drawings, verify all dimensions including rough openings, if any discrepancies are found, immediately contact Jensen Engineer.
4. The Jensen Engineer will interpret the intent of the drawings in case of possible conflict or Permissible Variations.
5. Dimensional Tolerances - The length, width, height, or dia. measurements of the enclosure when measured on the inside shall be within the tolerance form design dimensions by more than the following:
 - Dimensions: Tolerance:
 - 0 to 30 Feet 3/8"
 - 30 to 60 Feet 1/2"
 - 60 to 100 Feet 3/4"
 - 100 to 200 Feet as agreed upon between the supplier and purchaser.
6. Squariness Tolerance: One side of the precast concrete enclosure shall be determined by diagonal measurements. The difference between such measurements shall not exceed 1/8".
7. Measured Length: Allowable Difference
 - 0 to 10 Feet 1/2"
 - 10 to 20 Feet 3/4"
 - 20 Feet and over as agreed upon between the supplier and purchaser.

1. SB42-B42-11, 42" BOTTOM SECTION, WT. 6,400 Lbs.
2. PD 2102 EDISON 1" COVER TRANSFORMER PAD, WT. 2,713 Lbs.
3. S.H.S.S. BOLT (2) PICK HOLES, WT. 109 Lbs.
4. 16" x 20" CORNER KNOCKOUT x 3 1/2" DEEP.
5. LOCATE AS FOLLOWS: BOTTOM SECTION (B) SHELL, MTD.
6. 1 5/8" x 1 5/8" UNISTRUT x 10" LONG, TRANSFORMER PAD (2) TABLE MTD.
7. 1 5/8" x 1 5/8" UNISTRUT x 10" LONG, TRANSFORMER PAD (2) TABLE MTD. - I INSERT W/CLEAN-OUT HOLE. LOCATE AS FOLLOWS: TRANSFORMER PAD (6) FRAME MTD. X 1" GALV. COIL THIRD INSERT. LOCATE AS FOLLOWS: BOTTOM SECTION (4) CORE, MTD.



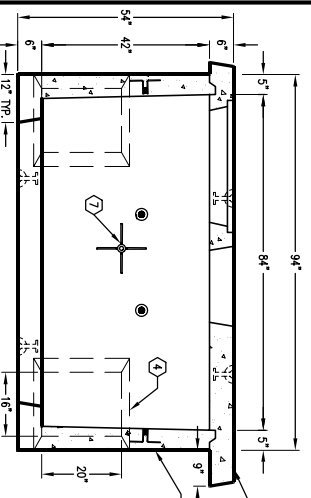
MINIMUM DIMENSION SIZE:
 5'-0" x 6'-0" x 42" MINIMUM

K686-SB42-11

PER EDISON SPEC. UGS 530.1 (500 SB-2)

03-01-02

SECTION A-A

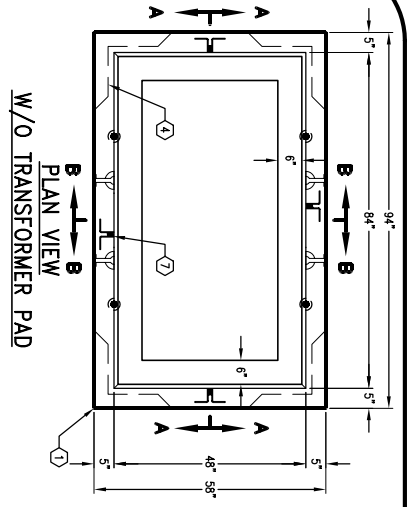


DATE	DESCRIPTION	BY

K686-SB42-11

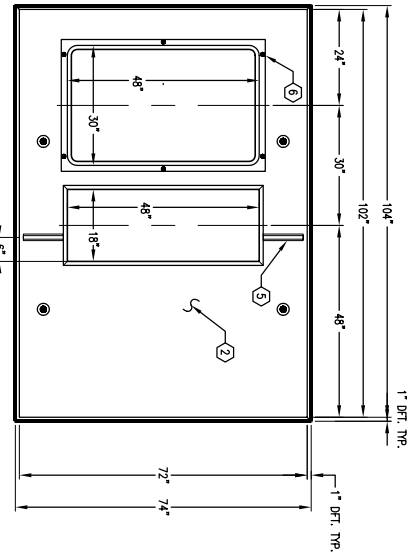
PER EDISON SPEC. UGS 530.1 (500 SB-2)

03-01-02

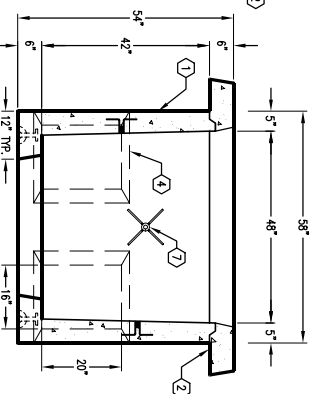


PLAN VIEW
 W/O TRANSFORMER PAD

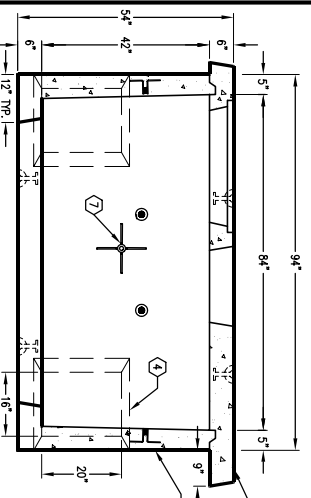
PLAN VIEW OF TRANSFORMER PAD



SECTION B-B



SECTION A-A



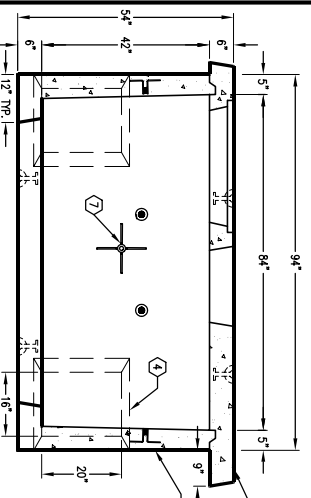
DATE	DESCRIPTION	BY

K686-SB42-11

PER EDISON SPEC. UGS 530.1 (500 SB-2)

03-01-02

SECTION A-A



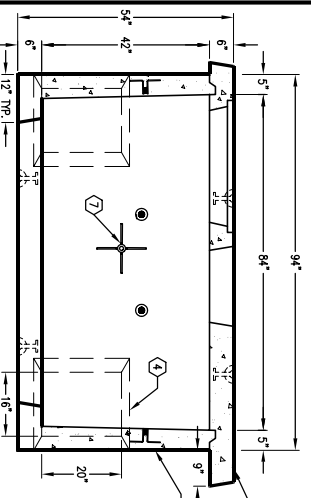
DATE	DESCRIPTION	BY

K686-SB42-11

PER EDISON SPEC. UGS 530.1 (500 SB-2)

03-01-02

SECTION A-A



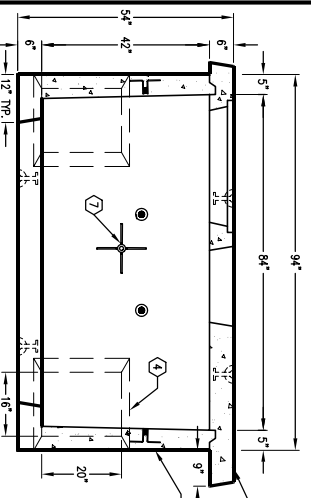
DATE	DESCRIPTION	BY

K686-SB42-11

PER EDISON SPEC. UGS 530.1 (500 SB-2)

03-01-02

SECTION A-A



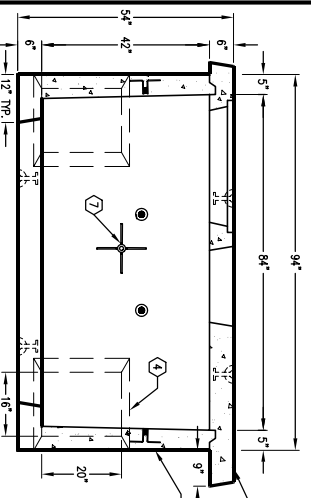
DATE	DESCRIPTION	BY

K686-SB42-11

PER EDISON SPEC. UGS 530.1 (500 SB-2)

03-01-02

SECTION A-A



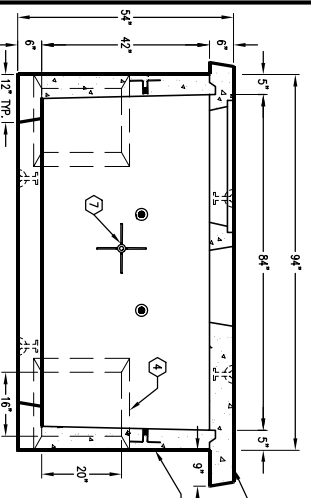
DATE	DESCRIPTION	BY

K686-SB42-11

PER EDISON SPEC. UGS 530.1 (500 SB-2)

03-01-02

SECTION A-A



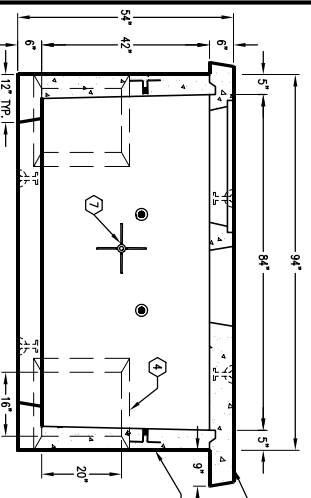
DATE	DESCRIPTION	BY

K686-SB42-11

PER EDISON SPEC. UGS 530.1 (500 SB-2)

03-01-02

SECTION A-A



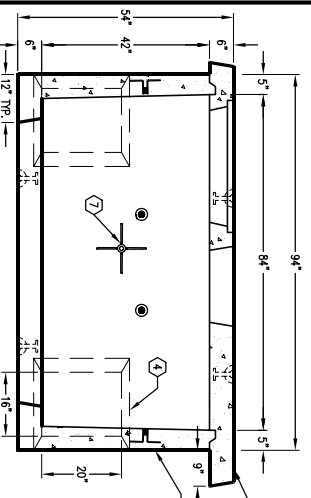
DATE	DESCRIPTION	BY

K686-SB42-11

PER EDISON SPEC. UGS 530.1 (500 SB-2)

03-01-02

SECTION A-A



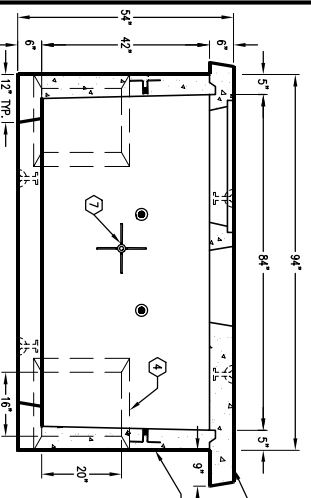
DATE	DESCRIPTION	BY

K686-SB42-11

PER EDISON SPEC. UGS 530.1 (500 SB-2)

03-01-02

SECTION A-A



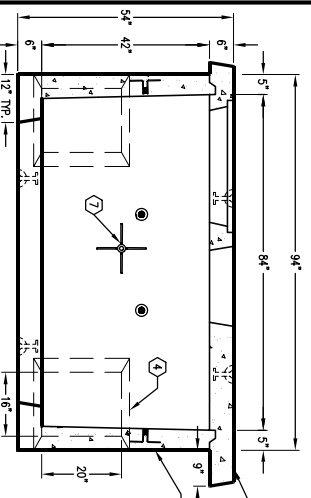
DATE	DESCRIPTION	BY

K686-SB42-11

PER EDISON SPEC. UGS 530.1 (500 SB-2)

03-01-02

SECTION A-A



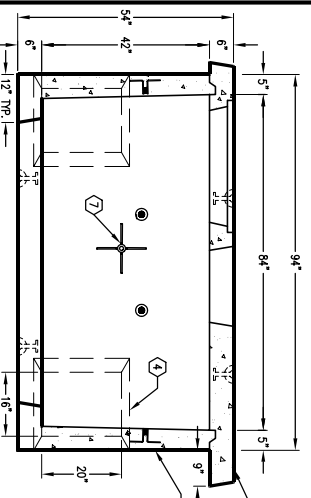
DATE	DESCRIPTION	BY

K686-SB42-11

PER EDISON SPEC. UGS 530.1 (500 SB-2)

03-01-02

SECTION A-A



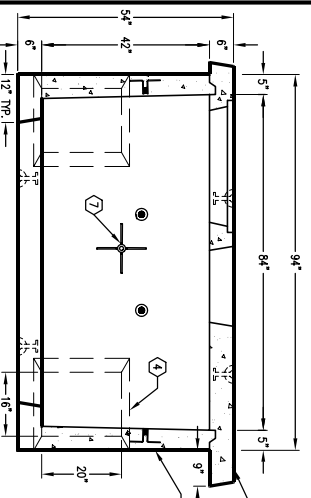
DATE	DESCRIPTION	BY

K686-SB42-11

PER EDISON SPEC. UGS 530.1 (500 SB-2)

03-01-02

SECTION A-A



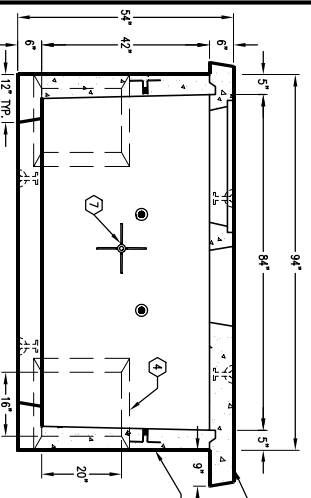
DATE	DESCRIPTION	BY

K686-SB42-11

PER EDISON SPEC. UGS 530.1 (500 SB-2)

03-01-02

SECTION A-A



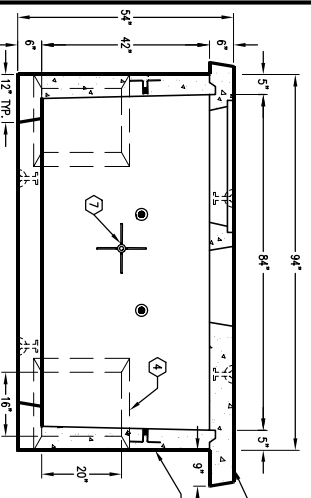
DATE	DESCRIPTION	BY

K686-SB42-11

PER EDISON SPEC. UGS 530.1 (500 SB-2)

03-01-02

SECTION A-A



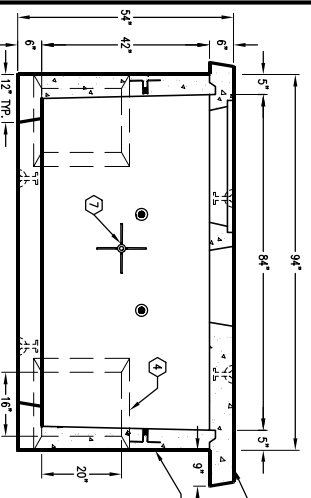
DATE	DESCRIPTION	BY

K686-SB42-11

PER EDISON SPEC. UGS 530.1 (500 SB-2)

03-01-02

SECTION A-A



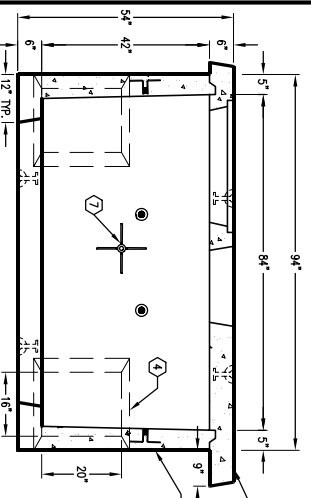
DATE	DESCRIPTION	BY

K686-SB42-11

PER EDISON SPEC. UGS 530.1 (500 SB-2)

03-01-02

SECTION A-A



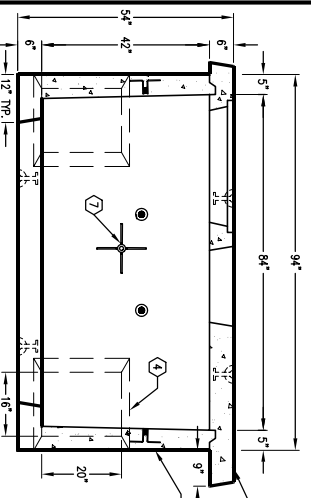
DATE	DESCRIPTION	BY

K686-SB42-11

PER EDISON SPEC. UGS 530.1 (500 SB-2)

03-01-02

SECTION A-A



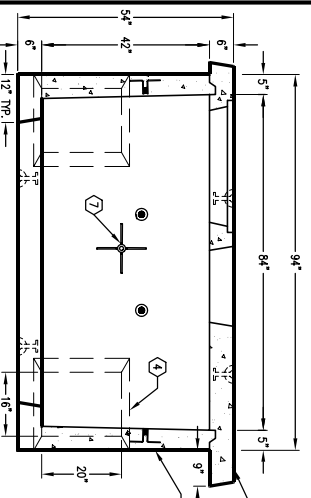
DATE	DESCRIPTION	BY

K686-SB42-11

PER EDISON SPEC. UGS 530.1 (500 SB-2)

03-01-02

SECTION A-A



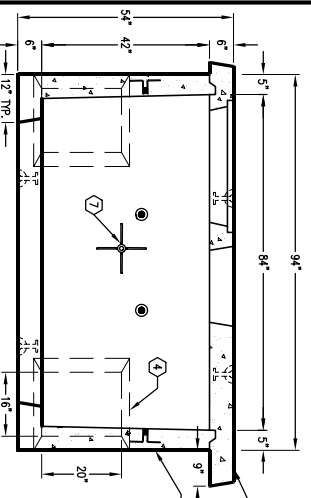
DATE	DESCRIPTION	BY

K686-SB42-11

PER EDISON SPEC. UGS 530.1 (500 SB-2)

03-01-02

SECTION A-A



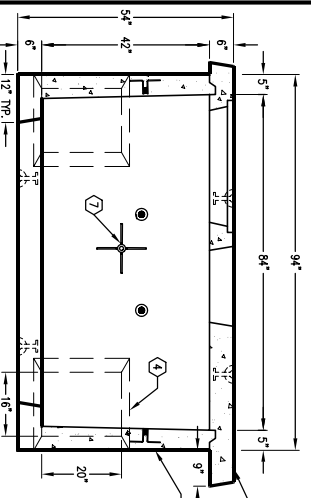
DATE	DESCRIPTION	BY

K686-SB42-11

PER EDISON SPEC. UGS 530.1 (500 SB-2)

03-01-02

SECTION A-A



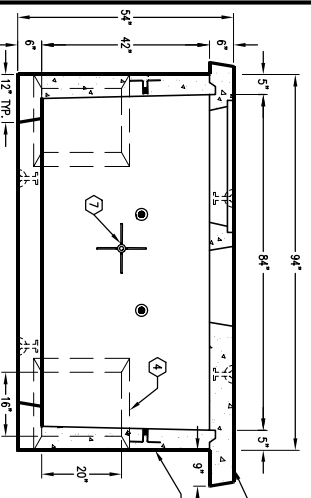
DATE	DESCRIPTION	BY

K686-SB42-11

PER EDISON SPEC. UGS 530.1 (500 SB-2)

03-01-02

SECTION A-A



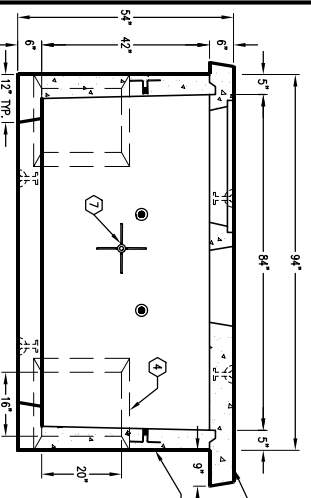
DATE	DESCRIPTION	BY

K686-SB42-11

PER EDISON SPEC. UGS 530.1 (500 SB-2)

03-01-02

SECTION A-A



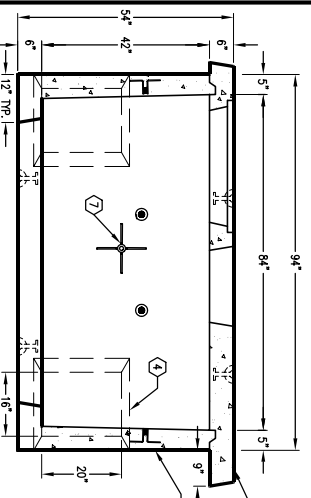
DATE	DESCRIPTION	BY

K686-SB42-11

PER EDISON SPEC. UGS 530.1 (500 SB-2)

03-01-02

SECTION A-A



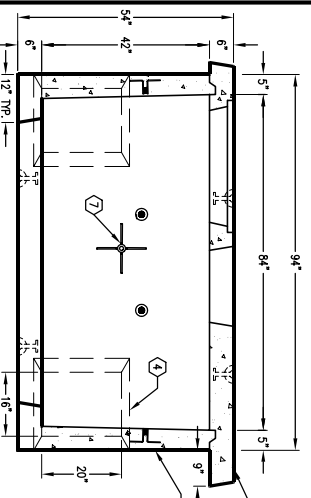
DATE	DESCRIPTION	BY

K686-SB42-11

PER EDISON SPEC. UGS 530.1 (500 SB-2)

03-01-02

SECTION A-A



DATE	DESCRIPTION	BY