

5'-0" x 8'-6" EDISON SURFACE OPERABLE ENCLOSURE X 60" DEEP

- NOTES:**
- SWITCH ENCLOSURE TO BE PLACED ON A MIN. 6" BASE OF CRUSHER RUN FOR EASE OF INSTALLATION AND EVEN LOAD DISTRIBUTION.
 - VALU DESIGNED PER MASHTO US 20-44 TRAFFIC BRIDGE CONCRETE AND 60,000 PSI (GRADE 60) REINFORCING STEEL PER CALC. #31647.
 - ROOF SLAB DESIGNED FOR PARKWAY LOADING OF 350 PSF. AND 60,000 PSI. COMPRESSIVE STRENGTH CONCRETE CALC. #31647.
 - COVERS DESIGNED FOR PARKWAY LOADING OF 350 PSF ED IN FLOOR OF BOTTOM SECTION OR IN TOP SURFACE OF ROOF SLAB.
 - THE EPDM GASKET SHALL BE GULLED IN PLACE USING 3M SCOTCH-CRIP BRAND #497 RUBBER AND GASKET ADHESIVE. THE GASKET MATERIAL SHALL BE EPDM MATERIAL, 50 SHORE FROM RESEARCH & DEVELOPMENT CO. PART NO. MBE-03-MOD. GASKET AND FRAME SHALL BE CLEANED PRIOR TO APPLICATION OF ADHESIVE. ADHESIVE SHALL BE APPLIED TO GASKET AND FRAME.
 - THE ABBREVIATION "990" SHALL BE STENCILED IN RED LETTERS, 1 1/2" HIGH, ADJACENT TO EACH GROUNDING INTERIOR WALLS TO BE PAINTED WHITE.

- GENERAL NOTES:**
- Minimum soil bearing capacity is hereby assumed to be 2000 PSF unless otherwise documented by a geotechnical report that shall be provided to Jensen Precast by the contractor. Jensen Precast shall not be held responsible for the soil bearing capacity. Installation of Manholes, Vaults, Handholes, Meter Boxes etc. will be as per Jensen installation Structural Plans.
 - Structural modification to the Jensen line of products is not permitted without prior written approval from Jensen.
 - Engineering Department. All dimensions including rough openings if any discrepancies are found, notify the Jensen Engineer immediately.
 - The Jensen Engineer will interpret the drawings in the event of possible conflict or discrepancy.
 - Permissible Variations - The length, width, height, or dia. measurements at the inside surfaces shall not deviate from design dimensions by more than the following:

Dimensions:	Tolerance:
0 to 5 Feet	1/4"
5 to 10 Feet	3/8"
10 to 20 Feet	1/2"

 Squariness Tolerance: between the supplier and purchaser. The inside of the precast concrete component shall be square as determined by diagonal measurements. The difference between such measurements shall not exceed the following:

Measured Length:	Allowable Difference
0 to 10 Feet	1/2"
10 to 20 Feet	3/4"

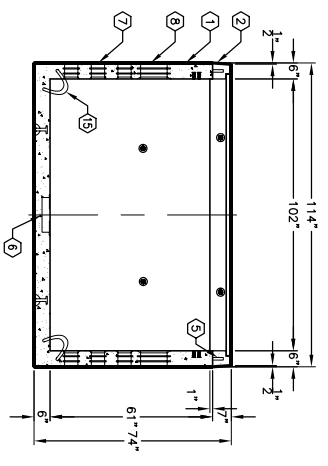
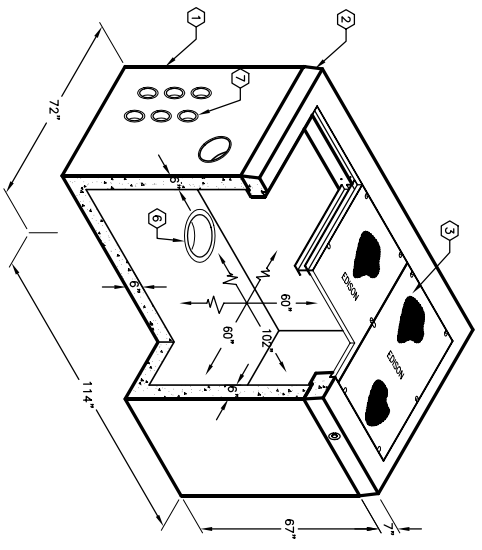
 20 Feet and over as agreed upon between the supplier and purchaser.

- PRE96-B61-11, 61" BOTTOM SECTION, WT. 16,115 Lbs.
- PRE96-B18-11, 8" TOP SLAB 3 HOLE W/ (1) CAST IN GALVANIZED ANGLE FRAME, WT. 2,800 Lbs.
- PRE96-B18-11, 8" TOP SLAB 3 HOLE W/ (1) CAST IN 3" x 2" 1/2" S.S.P.H. BOLTS W/ CORNICE WASHER (3) PLACES WT. 105g.
- 5/8" LOOP INSERT FOR SLAB ADJUSTMENT- LOCATE 4 PLACES AS SHOWN.
- 1/3" DIA. SUMP x 3" DEEP (5900-598) W/ 1/5 1/4" DIA x 1/4" DEEP ACCESS FOR COVER (08-2102). LOCATE AS FOLLOWS: BOTTOM SECTION (1) CORE MID.
- 5" DIA. CONCRETE (5585) WITH LOCATOR FOR 8" WALLS. LOCATE AS FOLLOWS: ONE PIECE PLASTIC PART TERMINATION. LOCATE AS FOLLOWS:
- BOTTOM SECTION (2) CORE MID.
- 1/2" P-251 INSERT W/ CLEAN OUT. LOCATE AS FOLLOWS: TOP SECTION (1) FRAME MID BENTONE GROUNDING INSERTS W/ #2 SLD COPPER WIRE BAZED FROM INSERT. REBAR CORE EDISON APPROVED. LOCATE AS FOLLOWS: BOTTOM SECTION (4) CORE MID.
- 1/2" GALVANIZED NC LOOP INSERTS FOR J-BOLTS PLUS 1/2" DIA. GALVANIZED J-BOLTS TO SUPPORT NEUTRAL GROUND BUS. LOCATE AS FOLLOWS: BOTTOM SECTION (4) CORE MID.
- 7/8" EXPOSED PULL RING, GALVANIZED. LOCATE AS FOLLOWS: BOTTOM SECTION (4) CORE MID.

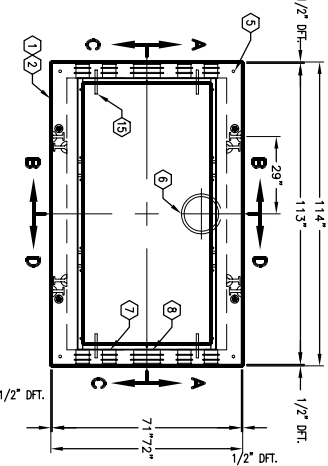
FOLLOWING MATERIALS TO BE SHIPPED WITH VALU:

- (b) 7/8" x 1 3/4" CONCRETE (45 FEET REQ'D)
- (c) 30 x 48" EDISON SURFACE OPERABLE ENCL. - R & D. CO.
- (e) # MBE-08-MOD (1 SET) (25-20-13)
- (f) 1/2" DIA. J-BOLTS - USS 731 (4 REQ'D) (20-10-461)

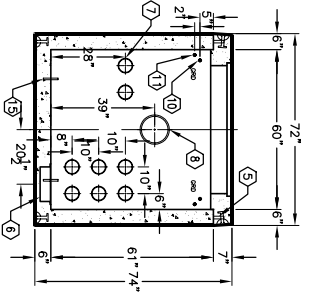
ORDERING INFORMATION:
 K586-SE60-11P FOR ASSEMBLY AS SHOWN.
 PER EDISON SPEC. USS-586
 WEIGHT FOR ASSEMBLY AS SHOWN IS 18,614 Lbs.



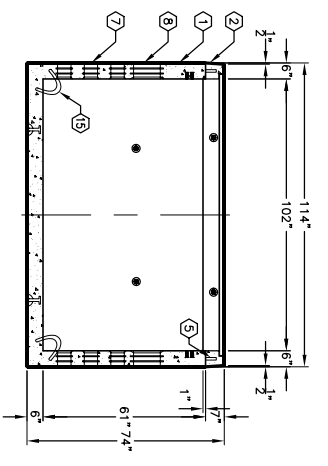
SECTION A-A



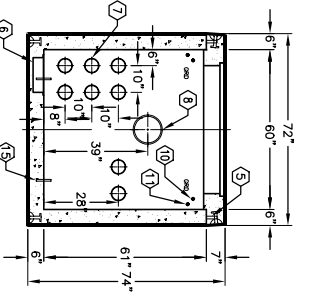
PLAN VIEW



SECTION B-B



SECTION C-C



SECTION D-D



K586-SE60-11P
 PER EDISON SPEC. USS-586

#	DATE	DESCRIPTION	BY

K586-SE60-11P
 PER EDISON SPEC. USS-586