

4'-0" x 4'-6" EDISON TRANSFORMER PAD x 4" THICK

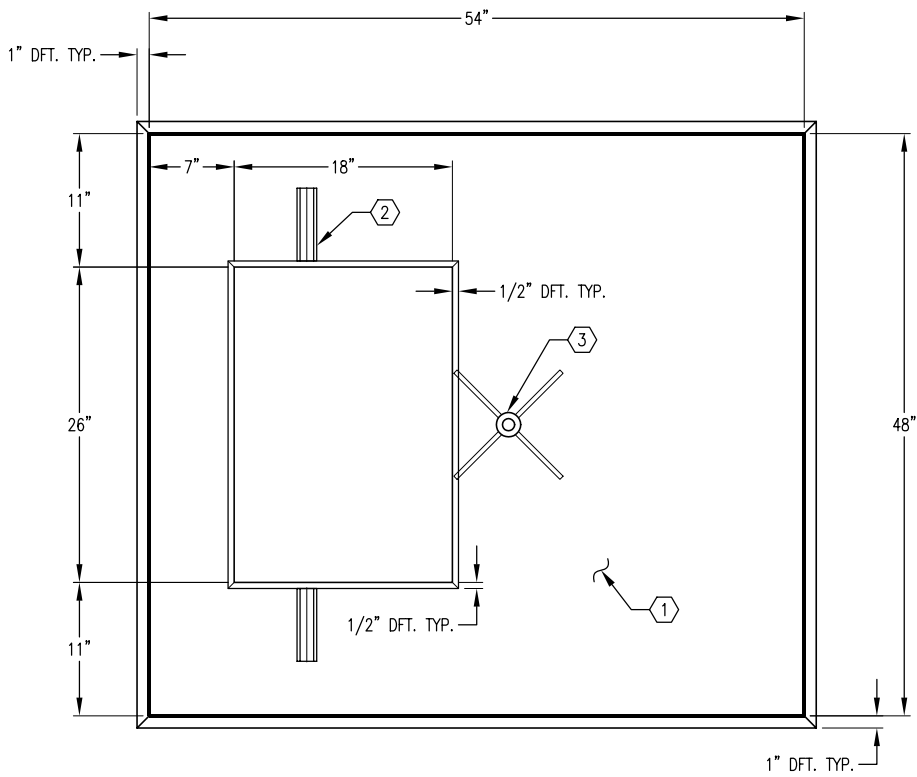
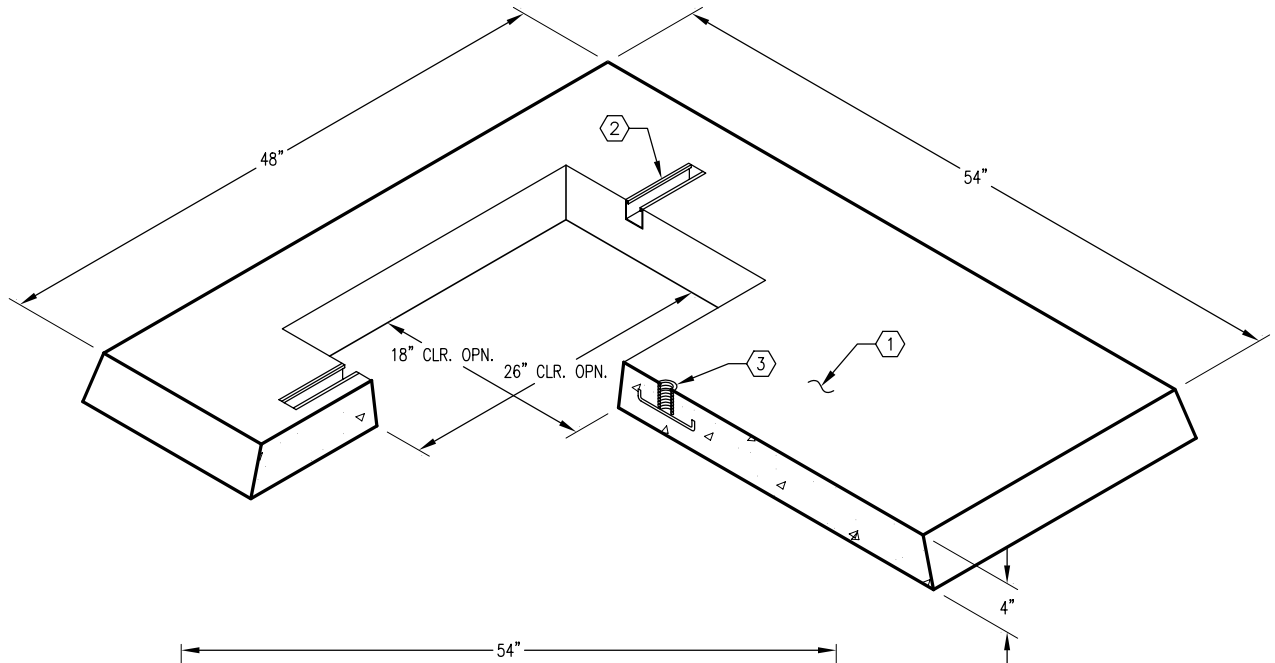
NOTES:

■ PAD DESIGNED PARKWAY LOADING USING 5500 PSI [CONCRETE COMPRESSIVE STRENGTH AND 60,000 PSI YIELD STRENGTH ASTM A-706 STEEL REINFORCEMENT.

1. PD4854-T4-11 TRANSFORMER PAD, WT. 743 Lbs.
2. 1 5/8" x 1 5/8" CHANNEL FRAME x 6", (2) TABLE MTD.
3. 1" DIA. COIL THR'D. INSERT, (1) TABLE MTD.

ORDERING INFORMATION:

PD4854-T4-11 FOR UNIT AS SHOWN
 APPROVED FOR EDISON SPEC. UGS 504 PAD No. 1
 TOTAL WEIGHT OF PAD IS 743 Lbs.



PLAN VIEW



AUTOCAD REL. 14

#	DATE	DESCRIPTION	BY

PD4854-T4-11

PER EDISON SPEC. UGS 504 PAD #1 03-01-02