

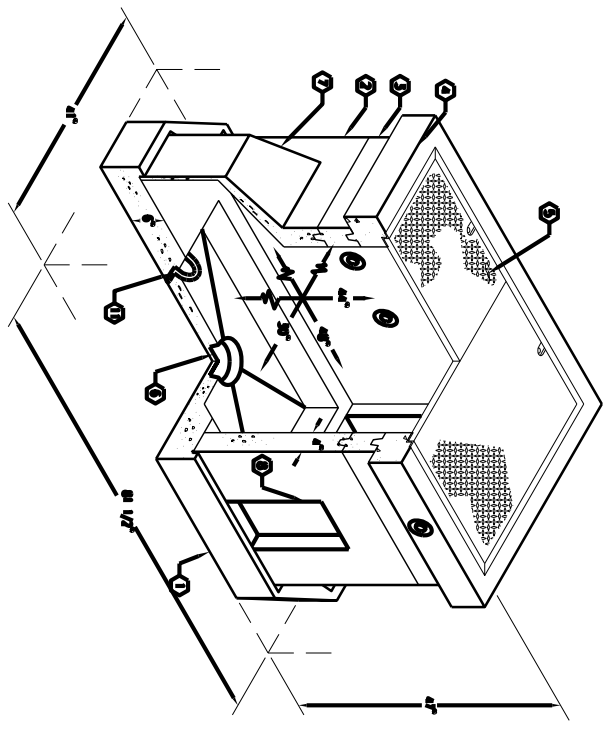
2'-6" x 4'-0" HEAVY TRAFFIC EDISON INTERCEPT DUCTED BOX x 42" DEEP

NOTES:

1. P83048-B-03, BASE SLAB, WT. 1,700 BS.
2. P83048-D-27-03, 27" INTERMEDIATE SECTION, WT. 1,170 BS.
3. P83048-R6, 6" RESEF SECTION, WT. 210 BS.
4. P83048-T8-11, 8" TOP SLAB, WT. 1180 BS. W/CAST IRON FRAME CAST IN PLACE.
5. ALWAYSRA FOUNDRY A-1473 TRAFFIC CAST IRON FRAME CAST IN TOP SECTION W/ TWO PCEE C.I. COVER EDISON, WT. 740 Lbs.
6. 6" x 7" DA. SUPP. x 4" DEEP, BOTTOM SECTION.
7. 23" x 26" DUCTED K.O. x 12" DEEP, BOTTOM SECTION.
8. 8" x 16" K.O. x 5" DEEP, BOTTOM SECTION.
9. 1" DA. BLIND GROUND ROD HOLE, BOTTOM SECTION.
11. 7/8" DA. x 9" GALV. VERTICAL PULL ROD, BOTTOM SECTION.

CONCRETE REINFORCEMENT:

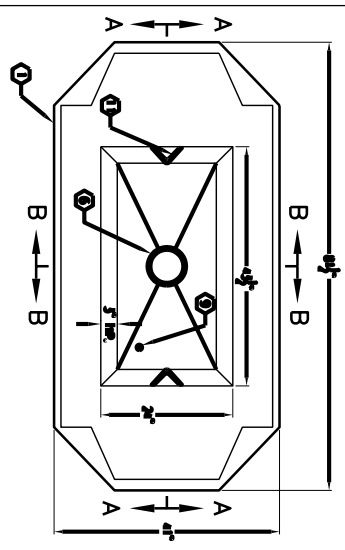
APPROVED FOR EDISON SPEC. USE-2201 R8-4
 TOTAL WEIGHT OF ASSEMBLY: 5000 LBS. APPROX.



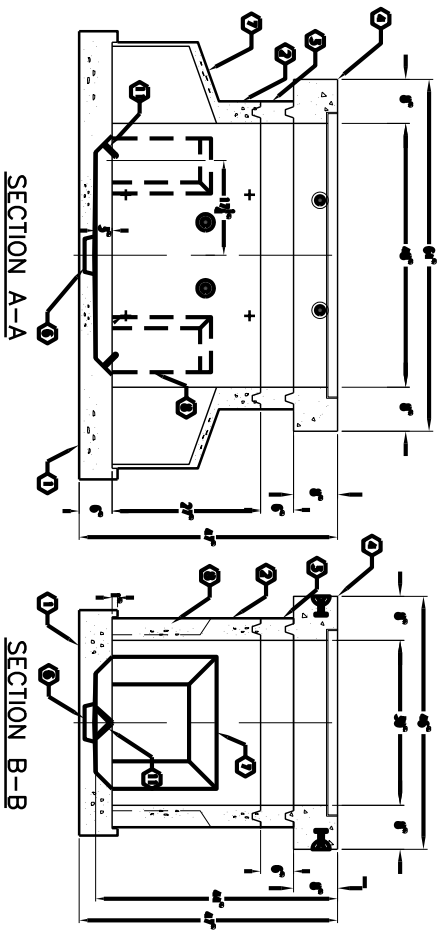
MINIMUM EXAMINATION SIZE
 4'-3" x 7'-10" x 18" MIN. HEIGHT



K3048-D144-TCI-11
 PER EDISON SPEC. 2201 R8-4
 10-02-03



PLAN VIEW OF BOTTOM SLAB



SECTION A-A

SECTION B-B



1	BASE SLAB	1,700
2	INTERMEDIATE SECTION	1,170
3	RESEF SECTION	210
4	TOP SLAB	1,180
5	CAST IRON FRAME	740
6	6" x 7" DA. SUPP. x 4" DEEP	
7	23" x 26" DUCTED K.O. x 12" DEEP	
8	8" x 16" K.O. x 5" DEEP	
9	1" DA. BLIND GROUND ROD HOLE	
11	7/8" DA. x 9" GALV. VERTICAL PULL ROD	

K3048-D144-TCI-11
 PER EDISON SPEC. USE-2201 R8-4
 10-02-03