

10'-0" x 12'-0" EDISON TRANSFORMER PAD W/5'-0" x 8'-6" ENCLOSURE x 60" DEEP

NOTES:

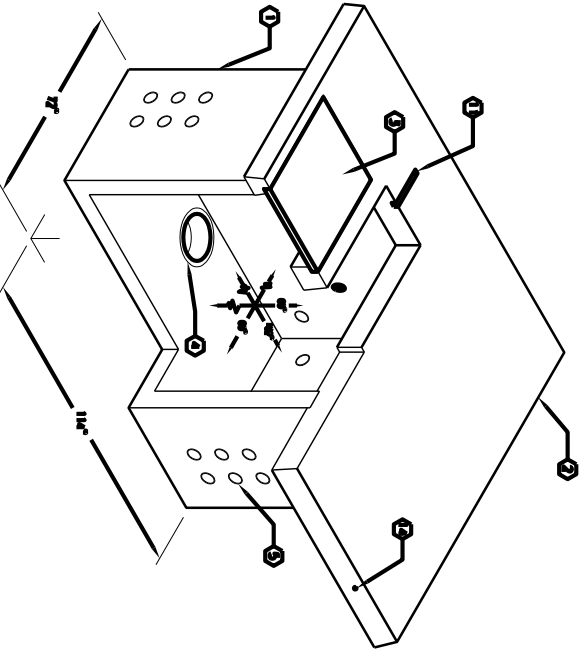
1. EXPOSED REIN FOR W-20-44 MESH (LOADING USAC 3,500 P.S.I. PER CHALK) AND EXPOSED P.S.I. (GRADE 60) REINFORCED STEEL FOR CHALK, 7 BARS.
2. COVER EXPOSED REIN REINFORCING LAYOUT.
3. ALL AIRSPACE SURFACES SHALL BE FINISHED WITH ONE COAT OF FULL LAYER SPALL PAINT.
4. SPALL ENCLOSURE TO BE FINISHED IN A 6" BARS CONCRETE FOR THE DEPT. IN INSTALLATION AND THEN LOAD CONSTRUCTION.

GENERAL NOTES:

1. Minimum soil bearing capacity is to be 2000 P.S.F. unless otherwise determined by a geotechnical report that shall be provided to Jensen Precast by the end user. Jensen Precast will not be responsible for the soil bearing capacity of the pad.
2. Installation of transformer, vaults, manholes, water lines, etc. shall be per local jurisdiction requirements.

1. 8" x 8" x 11'-11" GR. CONCRETE SECTION 14" HIGHER THAN EXISTING FIN. FLOOR FIN. WITH FINISHING-AS-COURED CON. REIN. REIN. (2) #4 BARS.
2. 1/2" - 5/8" PLATE REIN. UNDER AS FINISH: BRIDGE SECTION (1) CON. FIN. (2) #4 BARS.
3. 1/2" - 5/8" PLATE REIN. UNDER AS FINISH: BRIDGE SECTION (1) CON. FIN. (2) #4 BARS.
4. 1/2" - 5/8" PLATE REIN. UNDER AS FINISH: BRIDGE SECTION (1) CON. FIN. (2) #4 BARS.
5. 1/2" - 5/8" PLATE REIN. UNDER AS FINISH: BRIDGE SECTION (1) CON. FIN. (2) #4 BARS.
6. 1/2" - 5/8" PLATE REIN. UNDER AS FINISH: BRIDGE SECTION (1) CON. FIN. (2) #4 BARS.
7. 1/2" - 5/8" PLATE REIN. UNDER AS FINISH: BRIDGE SECTION (1) CON. FIN. (2) #4 BARS.
8. 1/2" - 5/8" PLATE REIN. UNDER AS FINISH: BRIDGE SECTION (1) CON. FIN. (2) #4 BARS.
9. 1/2" - 5/8" PLATE REIN. UNDER AS FINISH: BRIDGE SECTION (1) CON. FIN. (2) #4 BARS.
10. 1/2" - 5/8" PLATE REIN. UNDER AS FINISH: BRIDGE SECTION (1) CON. FIN. (2) #4 BARS.
11. 1/2" - 5/8" PLATE REIN. UNDER AS FINISH: BRIDGE SECTION (1) CON. FIN. (2) #4 BARS.
12. 1/2" - 5/8" PLATE REIN. UNDER AS FINISH: BRIDGE SECTION (1) CON. FIN. (2) #4 BARS.
13. 1/2" - 5/8" PLATE REIN. UNDER AS FINISH: BRIDGE SECTION (1) CON. FIN. (2) #4 BARS.
14. 1/2" - 5/8" PLATE REIN. UNDER AS FINISH: BRIDGE SECTION (1) CON. FIN. (2) #4 BARS.

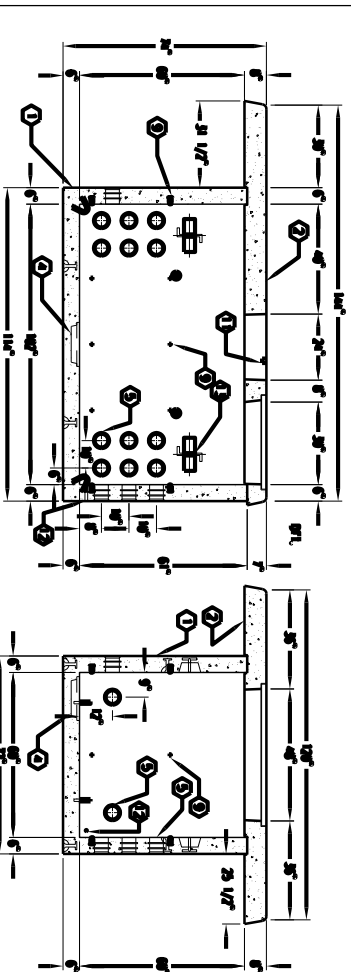
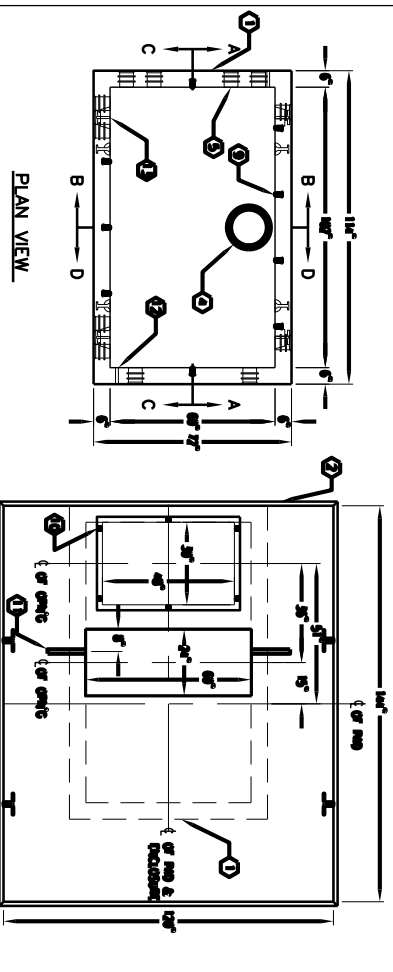
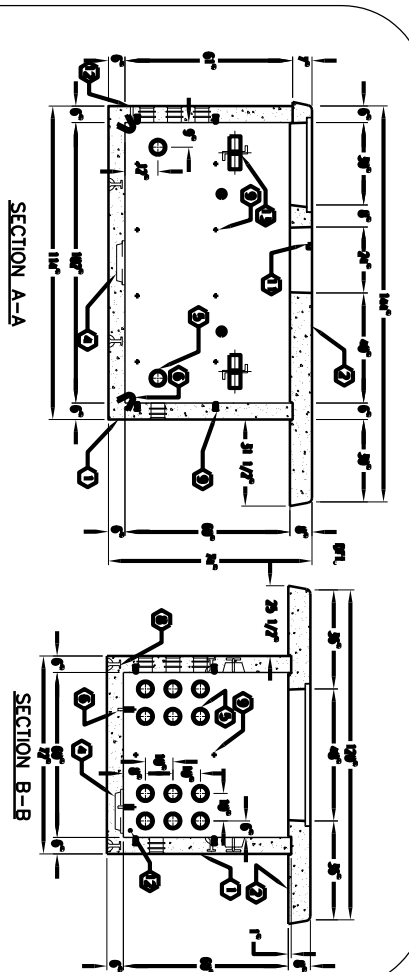
1. Minimum soil bearing capacity is to be 2000 P.S.F. unless otherwise determined by a geotechnical report that shall be provided to Jensen Precast by the end user. Jensen Precast will not be responsible for the soil bearing capacity of the pad.
2. Installation of transformer, vaults, manholes, water lines, etc. shall be per local jurisdiction requirements.



MINIMUM FOUNDING SIZE  
7'-0" x 11'-0" x 18" MIN. RCDD.

K586-SB60-11  
PER DESIGN US-585

JENSEN PRECAST  
AUTOCAD FILE: 14



JENSEN PRECAST

SECTION C-C

K586-SB60-11  
PER DESIGN US-585

1	MIN.	7'-0" x 11'-0" x 18" MIN. RCDD.
2	MIN.	7'-0" x 11'-0" x 18" MIN. RCDD.

03-01-02