

Z-LOK PIPE CONNECTOR

DESCRIPTION:

The rubber pipe connector is made for the purpose of producing a positive watertight connection for pipes entering precast concrete structures.

Placement of the connector into the concrete wall is achieved during manufacturing, making the connector an integral part of the structure. When installed, the inner rubber "O" Ring is stretched over the pipe which eliminates rubber wrinkling, compensating for pipe eccentricity and reduces the number of connectors required to cover all sizes of pipe. Once the pipe is through the gasket, a stainless steel band is fastened to ensure a positive watertight joint. After installation, the connector remains watertight, flexible, and shear-proof.

SPECIFICATIONS:

The connector is manufactured in accordance with A.S.T.M. specification C-923 titled "Resilient Connector Between Pipes Reinforced Concrete Manhole Structures and Pipes".

INSTALLATION INSTRUCTIONS:

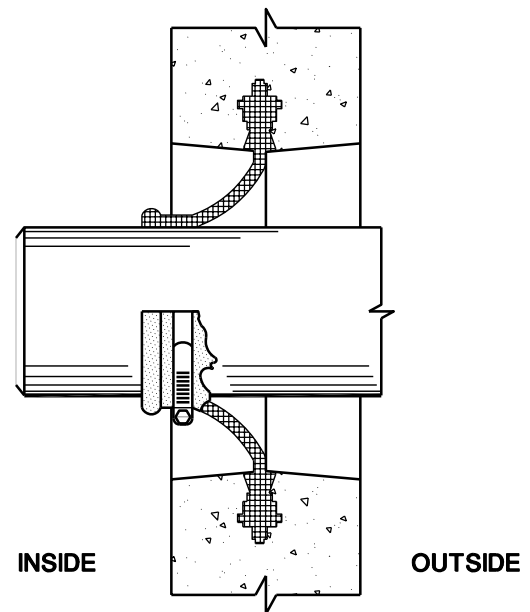
The connector is sized to fit the pipe barrel. Entry pipe should have a smooth outside surface and the correct diameter. Clean and lubricate the connector and the pipe end to be inserted in the connector. Care should be taken to lube the entire portion of pipe which will slide through the connector. If pipe is cut, care should be taken to allow no sharp edges. A slight bevel is preferred as a lead and this should also be lubricated. After inserting pipe, stainless steel band should be fastened directly behind inner rubber "O" Ring. Pipe bedding on outside of structure is critical as non-rigid pipe may ovate if not bedded properly.

WARNING:

Because of the connector's ability to insure a flexible, watertight joint, it is our strong recommendation that no mortar be placed around the connector at all on the outside of the structure. The use of mortar would eliminate the flexibility for which the connector is designed, and cause problems of shear.

ADVANTAGES:

1. No grouting or knockouts required.
2. Will accept any 4" pipe material and many 6" pipe material.
3. The connector allows pipe entering the structure to be deflected 25° omnidirectional.
4. A vertical or horizontal movement of 1-1/2 inches is permitted without loss of seal.
5. The connector assures a positive watertight connection that eliminates infiltration and shear due to settlement or ground movement. This flexibility permits immediate backfill enhancing project safety and overcoming the problems normally encountered with water, running sand, and other unstable trench conditions.



DETAIL OF CONNECTOR
(After Installation)

INSTALLATION STEPS:

1. Clean and lubricate connector.
2. Clean and coat pipe with lubricant.
3. Center pipe and insert.
4. Install stainless steel clamp and tighten.