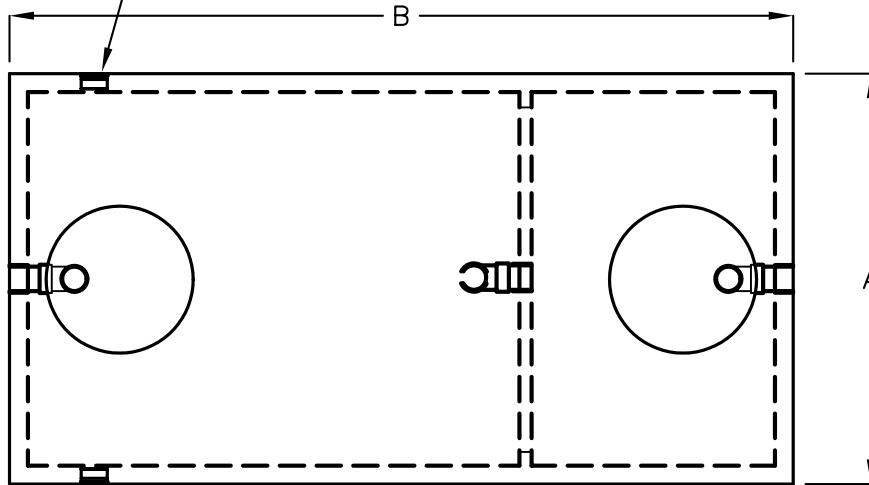


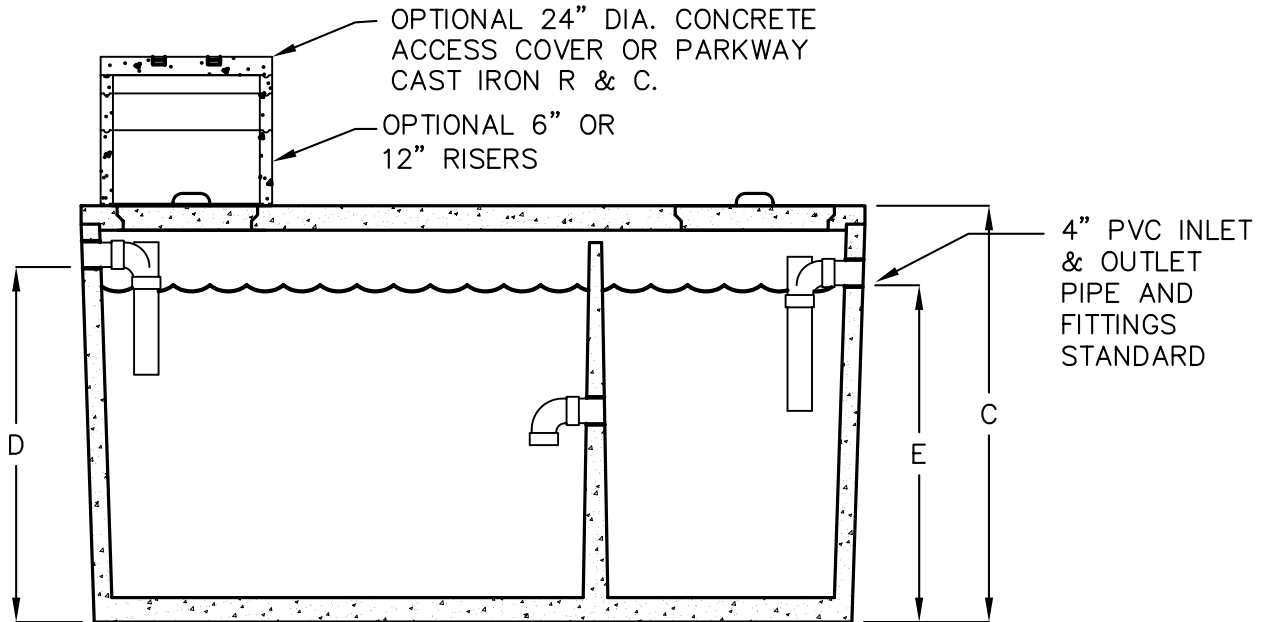
1000-1500 GALLON RESIDENTIAL SEPTIC TANKS

NON-TRAFFIC ACCEPTED BY UPC®

OPTIONAL SIDE
LOCATION FOR INLET



TOP VIEW



SIDE VIEW

MODEL NUMBER	LIQUID CAPACITY GALLONS	WIDTH 'A'	OVERALL LENGTH 'B'	TANK HEIGHT 'C'	INLET 'D'	OUTLET 'E'	MINIMUM EXCAVATION WIDTH	MINIMUM EXCAVATION LENGTH	TANK WEIGHT LBS.
JS-1000	1000	5'-1"	8'-2"	5'-8"	4'-10"	4'-7"	6'-1"	9'-2"	9,400
JS-1200	1200	5'-9"	8'-6"	5'-8"	4'-10"	4'-7"	6'-9"	9'-6"	10,600
JS-1500	1500	5'-7"	10'-8"	5'-8"	4'-10"	4'-7"	6'-7"	11'-8"	12,400

TANK DESIGNED FOR NON-TRAFFIC USE WITH A MAXIMUM LOAD OF 500 PSF AND DRY SOIL CONDITIONS (WATER TABLE BELOW TANK). EARTH COVER OVER TANK NOT TO EXCEED 3'.

EFFLUENT FILTERS ARE AVAILABLE UPON REQUEST.

FOR COMPLETE DESIGN AND PRODUCT INFORMATION CONTACT JENSEN PRECAST.

THE DESIGN AND DETAIL OF THIS DRAWING ARE THE PROPERTY OF JENSEN PRECAST AND NOT TO BE USED EXCEPT IN CONNECTION WITH ITS OWN WORK. DESIGN AND INVENTION RIGHTS ARE RESERVED.