

4'-0" x 4'-0" LAUSD TRAFFIC FLAT WALL PULL BOX 4'-0" DEEP

NOTES:

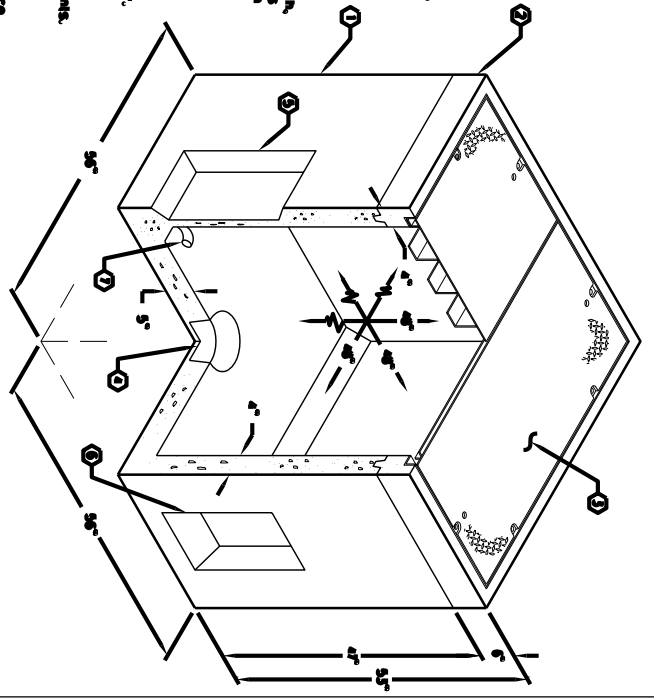
- PULL BOX EXPOSED IN ACCORDANCE WITH ABOVE
- MINIMUM SOIL BEARING CAPACITY IS 2000 PSF UNLESS OTHERWISE DOCUMENTED BY A GEOTECHNICAL REPORT THAT SPECIFICALLY PROVIDES TO JENSEN PRECAST BY THE END USER. JENSEN PRECAST SHALL NOT BE HELD RESPONSIBLE FOR THE SOIL BEARING CAPACITY, INSTALLATION OF MONUMENTS, VENTS, HORIZONTAL WATER BOXES ETC. AS PER JENSEN INSTALLATION PROCEDURES.
- STRUCTURAL MODIFICATION TO THE JENSEN LINE OF PRODUCTS IS NOT PERMITTED WITHOUT PRIOR WRITTEN APPROVAL FROM JENSEN ENGINEERING DEPARTMENT.
- DO NOT SCALE THE DRAWINGS. VERIFY ALL DIMENSIONS INCLUDING TYPICAL OPENINGS. IF ANY DISCREPANCIES ARE FOUND, NOTIFY THE JENSEN ENGINEER IMMEDIATELY.
- THE JENSEN ENGINEER WILL INTERPRET THE MEANING OF THE DRAWINGS IN CASE OF POSSIBLE CONFLICT OR AMBIGUITY.
- PERMISSIBLE VARIATIONS:
 - Dimensions Tolerances - The length, width, height, or dia. measurements of the structure when measured on the field surfaces shall not deviate from design dimensions by more than the following:

Dimensions:	0 to 5 feet	1/4"
	5 to 10 feet	3/8"
	10 to 20 feet	1/2"
- Supervisors: Tolerances: The inside of the precast concrete component shall be square as determined by diagonal measurements. The difference between such measurements shall not exceed the following:

Measured Length:	Maximum Difference
0 to 10 feet	1/2"
10 to 20 feet	3/4"

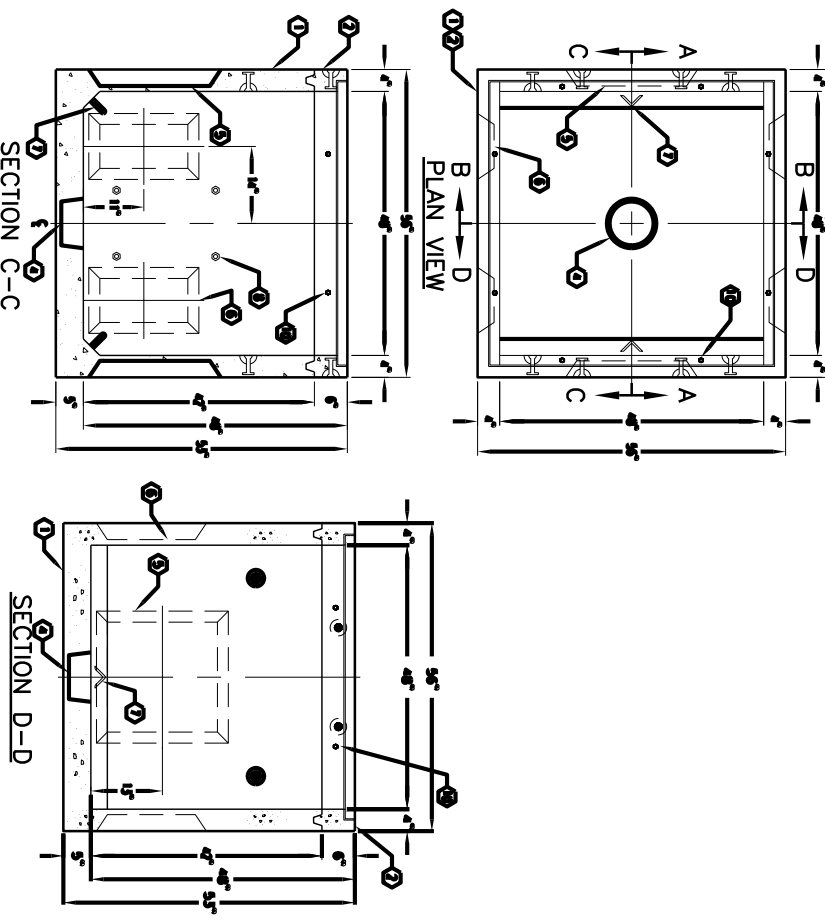
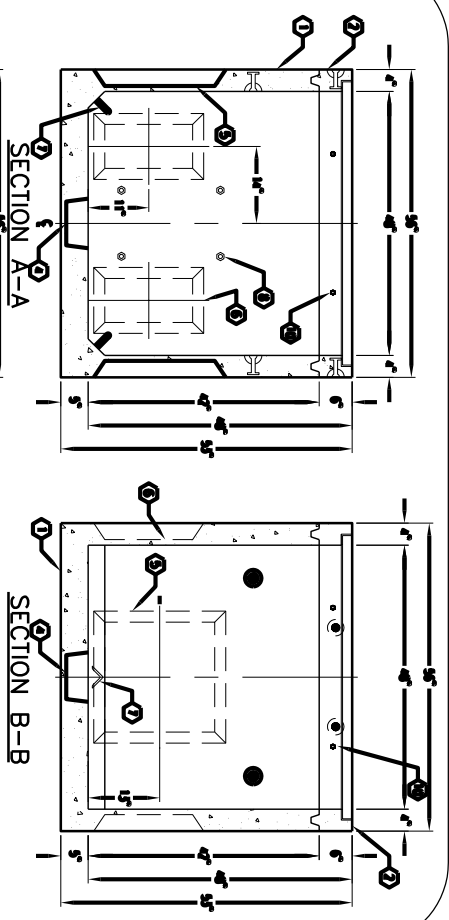
PULL BOX TO BE RACED BY A MIN. 6" BARS OF CHAIRS FOR THE USER OR INSTALLATION AND NOT LOAD DISTRIBUTION.

GENERAL INFORMATION:
 44-PP48-23T (LAUSD) TOP ASSSEMBLY AS SHOWN. TOTAL WEIGHT OF ASSEMBLY IS 4,420 lbs.



K44-PP48-23T
 LAUSD 03-01-02

MINIMUM EXCAVATION SIZE:
 5'-2" x 5'-2" x DEPTH REQUIRED



K44-PP48-23T
 LAUSD 03-01-02