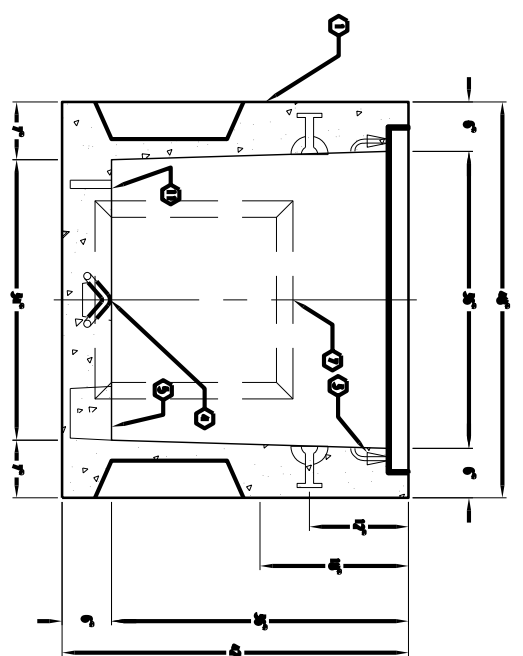
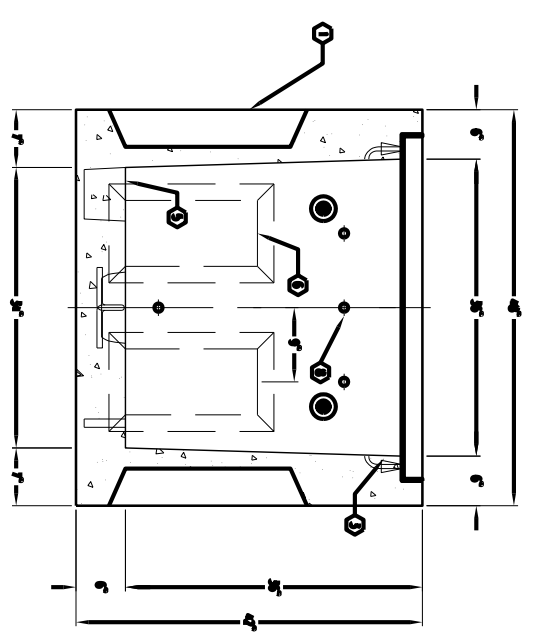


PLAN VIEW



SECTION A-A/C-C



SECTION B-B/D-D

- NOTES:**
- PULL BOX DISCARD IN ACCORDANCE WITH AGENCIES 11-20-64 MIMIC BRIDGE LOADING USING 5,500 PSF (37,500 PSI) COMPRESSION STRENGTH CONCRETE AND 60,000 PSI (4,133 MPa) YIELD STRENGTH ASTM A-705 STEEL REINFORCEMENT PER CALC. 2500-9.
 - COVER DISCARD FOR MIMIC LOADING PER CALC.
 - PULL BOX TO BE PLACED ON A MIN. 6" BEAR OF GRADE FOR USE OF NEUTRALIZATION AND EVEN LOAD DISTRIBUTION.

REINFORCING INFORMATION:
 #3368-FP36-23TF (LAUSD) FOR ASSUMED AS SHOWN. TOTAL WIDTH OF ASSUMED IS 4,375 IN.

1. #3368-FP36-23TF, 36" BENTON SECTION, 61, 4,525 lbs.
2. #3368-FP36-23TF, 36" BENTON SECTION, 61, 4,525 lbs.
3. #3368-FP36-23TF, 36" BENTON SECTION, 61, 4,525 lbs.
4. 1/2" DIA. FURCH WIND, PULL BOX, LOCATE AS FOLLOWS: (1) CORN. WIND.
5. 6" x 7" x 9" DEEP SLAB, WITH COAR. FILL, LOCATE AS FOLLOWS: (1) CORN. WIND.
6. 6" x 16" WOODCOUR. x 4 1/2" DEEP, DWMT AS FOLLOWS: ALL SORTS 2" DWMT, (2) SWELL WIND.
7. 20" x 20" WOODCOUR. x 4 1/2" DEEP, DWMT AS FOLLOWS: ALL SORTS 2" DWMT, (2) SWELL WIND.
8. 1/2" DIA. PLASTIC MACHINE WIND, LOCATE AS FOLLOWS: (8) CORN. WIND.
9. 1" DIA. SAND GRADED WIND, LOCATE AS FOLLOWS: (2) CORN. WIND.

- REINFORCING BAR SCHEDULES**
- (1) 10-10-10 CORN. WIND, 14 #4, (4) #10.
 - (2) 10-10-10 CORN. WIND, 14 #4, (4) #10.
 - (3) 10-10-10 CORN. WIND, 14 #4, (4) #10.
 - (4) 10-10-10 CORN. WIND, 14 #4, (4) #10.
 - (5) 10-10-10 CORN. WIND, 14 #4, (4) #10.
 - (6) 10-10-10 CORN. WIND, 14 #4, (4) #10.
 - (7) 10-10-10 CORN. WIND, 14 #4, (4) #10.
 - (8) 10-10-10 CORN. WIND, 14 #4, (4) #10.
 - (9) 10-10-10 CORN. WIND, 14 #4, (4) #10.
 - (10) 10-10-10 CORN. WIND, 14 #4, (4) #10.
 - (11) 10-10-10 CORN. WIND, 14 #4, (4) #10.

JENSEN
 PRECAST[®]

14221 SAN BERNARDINO AVE., FONTANA, CA 92335

THE DESIGN AND DETAIL OF THIS DRAWING ARE THE PROPERTY OF JENSEN PRECAST AND NOT TO BE USED EXCEPT IN CONNECTION WITH ITS OWN WORK. DESIGN AND INVENTION RIGHTS ARE RESERVED.	DRAWN BY: SMC DATE: 4-13-01 SCALE: 1/2"=1'-0"
3'-0" x 3'-0" PULL BOX - LAUSD X 36" DEEP W/ANGLE FRAME	DWG. NO.: K3636-FP36-23TF

AutoCAD 14