

5'-0" x 10'-6" LADWP MANHOLE x 7'-0" DEEP

NOTES:

- MANHOLE DESIGNED IN ACCORDANCE WITH AASHTO H-20-44 TRAFFIC BRIDGE LOADING USING 5,500 PSI [37.92MPa] COMPRESSIVE STRENGTH CONCRETE AND 60,000 PSI [413.2MPa] PSI YIELD STRENGTH ASTM A-706 STEEL REINFORCEMENT PER CALCS. #51015.
- MANHOLE TO BE PLACED ON A 6" CRUSHER RUN FOR EASE OF INSTALLATION AND EVEN LOAD DISTRIBUTION.
- LIMIT OF COVER OVER ROOF SECTION IS 1'-0" TO 4'-0".
- CONCRETE MIX USED IN POURING THIS PRODUCT SHALL USE FLY ASH AS AN ADMIXTURE.
- EACH CONCRETE SECTION SHALL BE MARKED ON THE INSIDE & OUTSIDE WITH "JENSEN PRECAST" THE DESIGNATION "DWP/FA.", AND THE DATE OF POUR.
- EACH CONCRETE SECTION SHALL HAVE CAST-IN ON THE INSIDE "JENSEN", THE YEAR, AND THE DESIGNATION "FA".
- NO SHARP OR ROUGH EDGES ON THE TERMINATORS ENTERING THE VAULT.

THE FOLLOWING MATERIAL TO BE SHIPPED WITH MANHOLE
(Q) 7/8" x 1 3/4" CONSEAL GASKET (45 FT. REQUIRED)

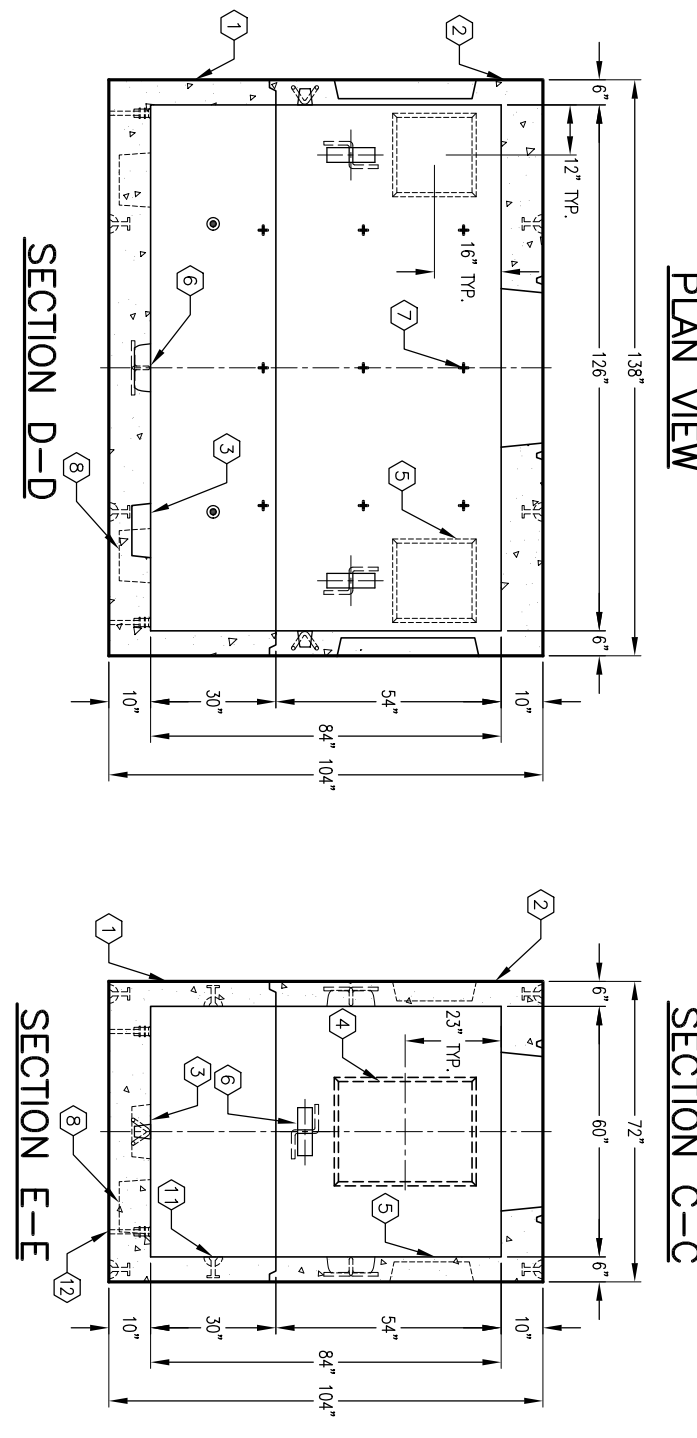
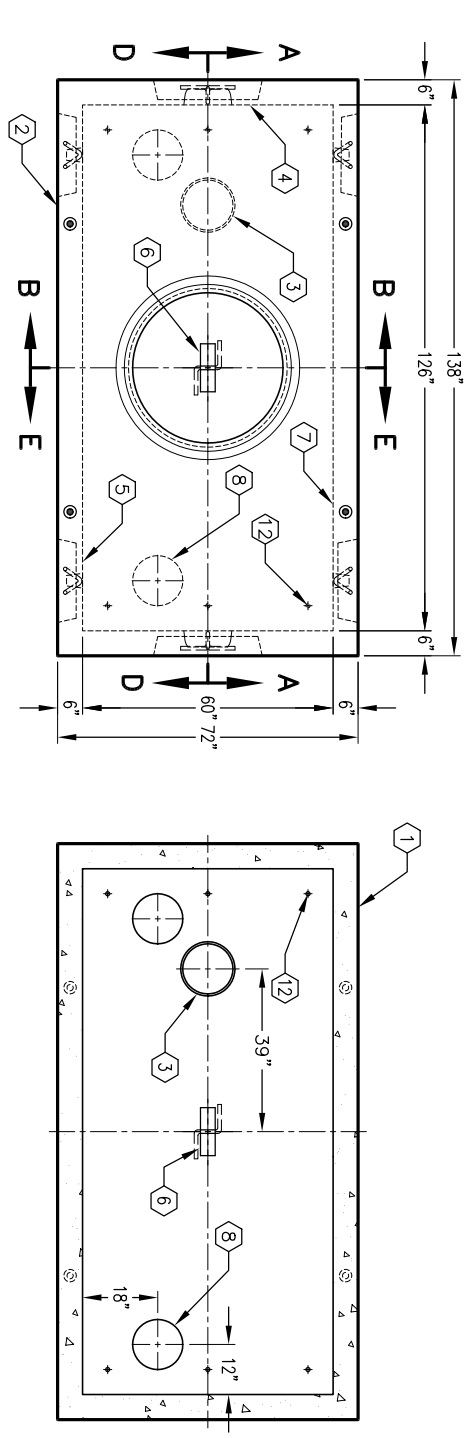
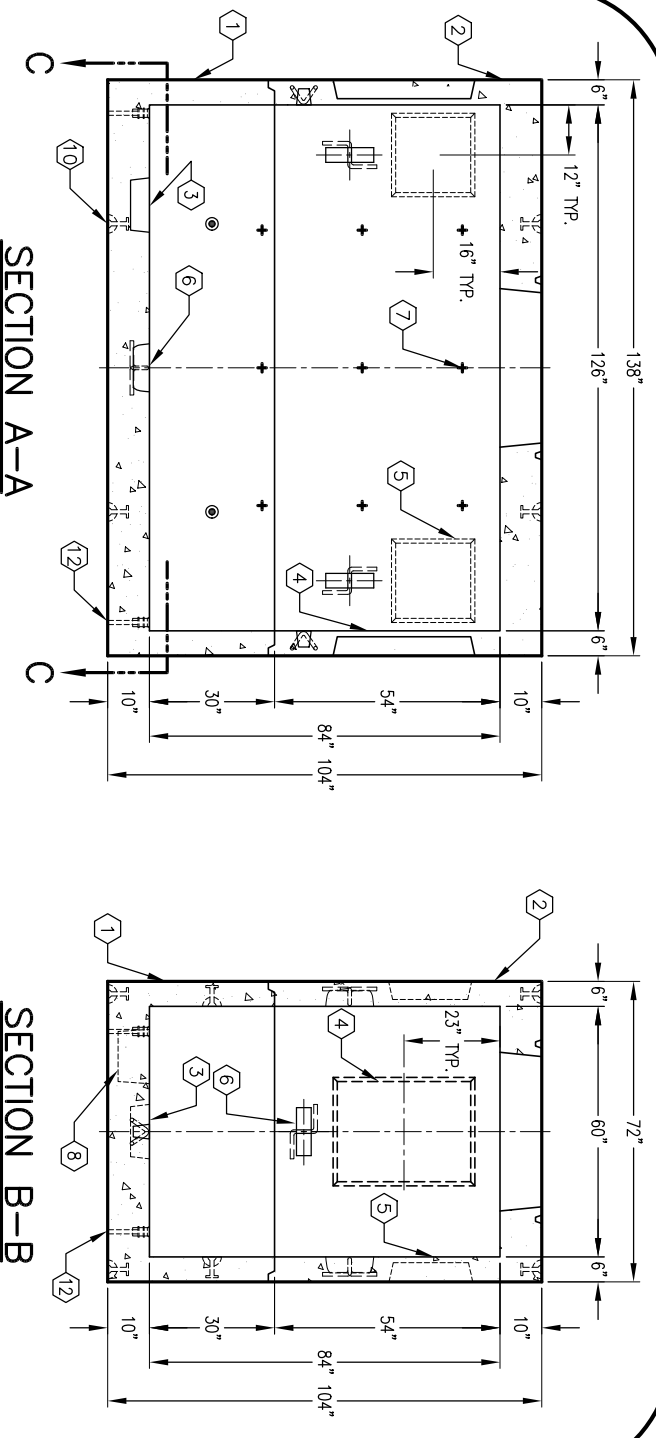
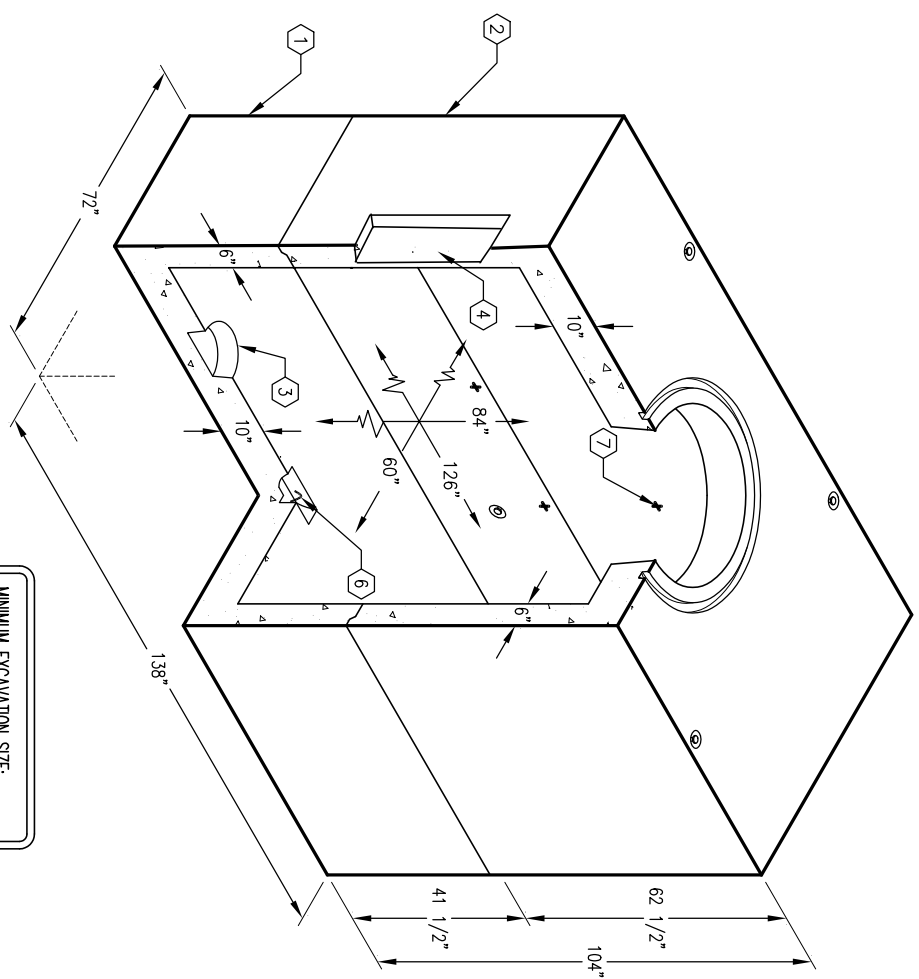
GENERAL NOTES:

1. Minimum soil bearing capacity is hereby assumed to be 2000 PSF unless otherwise documented by a geotechnical report that shall be provided to Jensen Precast by the end user. Jensen Precast shall not be held responsible for the soil bearing capacity.
2. Installation of Manholes, Vaults, Handholes, Meter Boxes etc. will be as per Jensen installation procedures.
3. Structural modification to the Jensen line of products is not permitted without prior written approval from Jensen Engineering Department.
4. Do not scale the drawings, verify all dimensions including rough openings, if any discrepancies are found, notify the Jensen Engineer immediately.
5. The Jensen Engineer will interpret the intent of the drawings in case of possible conflict or discrepancy.
6. Permissible Variations: Dimensional Tolerances – The length, width, height, or dia. measurements of the structure when measured on the inside surfaces shall not deviate from design dimensions by more than the following:
Dimensions: Tolerance:
0 to 5 Feet 1/4"
5 to 10 Feet 3/8"
10 to 20 Feet as agreed upon between the supplier and purchaser.
Squariness Tolerance:
The inside of the precast concrete component shall be square as determined by diagonal measurements. The difference between such measurements shall not exceed the following:
Measured Length: Allowable Difference
0 to 10 Feet 1/2"
10 to 20 Feet 3/4"
20 Feet and over as agreed upon between the supplier and purchaser.
- 7.

1. UV5106-B30-12, 30" BOTTOM SECTION, WT. 12,225 Lbs.
2. UV5106-134-12, 54" ROOF SECTION, WT. 15,359 Lbs.
3. 12" DIA. x 13" DIA. SUMP x 4 1/2" DEEP. LOCATE AS FOLLOWS: BOTTOM SECTION (1) CORE MTD.
4. 24" x 32" KNOCKOUT x 4 1/2" DEEP. DRAFT 1" TYPICAL ALL SIDES. LOCATE AS FOLLOWS: ROOF SECTION (2) SHELL MTD.
5. 18" x 18" KNOCKOUT x 4 1/2" DEEP. DRAFT 1" TYPICAL ALL SIDES. LOCATE AS FOLLOWS: ROOF SECTION (4) SHELL MTD.
6. 7/8" DIA. x 4 1/2" GALVANIZED PULL IRON WITH LEGS. LOCATE AS FOLLOWS: BOTTOM SECTION (1) CORE MTD.; ROOF SECTION (6) CORE MTD.
7. +1 1/2" PLASTIC INSERT. LOCATE AS FOLLOWS: BOTTOM SECTION (6) CORE MTD.; ROOF SECTION (12) CORE MTD.
8. 12" DIA. KNOCKOUT. LOCATE AS FOLLOWS: BOTTOM SECTION (2) CORE MTD.
12. 1" DIA. TERMS W/5/8" DIA. GROUND ROD KNOCKOUT. LOCATE AS FOLLOWS: BOTTOM SECTION (6) CORE MTD.

ORDERING INFORMATION:

K5106-FM84-12 FOR ASSEMBLY AS SHOWN.
APPROVED FOR LADWP SPEC. G-354, R7
TOTAL WEIGHT OF ASSEMBLY AS SHOWN IS 27,614 Lbs.



K5106-FM84-12
PER LADWP SPEC. G-354, R7

#	DATE	DESCRIPTION	BY

K5106-FM84-12
PER LADWP SPEC. G-354, R7