

5'-0" x 8'-6" RIVERSIDE PARKWAY TRANSFORMER ENCLOSURE x 84" DEEP

NOTES:

- VAULT DESIGNED IN ACCORDANCE WITH AASHTO H-20-44 TRAFFIC BRIDGE LOADING. USING 5,500 PSI [37.92MPa] COMPRESSIVE STRENGTH CONCRETE AND 60,000 PSI [413.2MPa] YIELD STRENGTH ASTM A-706 STEEL REINFORCEMENT PER CALCS. #51673. COVER DESIGNED FOR PARKWAY LOADING.
- VAULT TO BE PLACED ON A MIN. 6" BASE OF CRUSHER RUN FOR EASE OF INSTALLATION AND EVEN LOAD DISTRIBUTION.
- ALL INTERIOR CONCRETE WALLS SHALL BE PAINTED WITH ONE COAT OF FLAT LATEX WHITE PAINT.

THE FOLLOWING MATERIAL TO BE SHIPPED WITH EACH VAULT:
(Q) 7/8" x 1 3/4" CONSEAL GASKET (45 FT. REQ'D.)

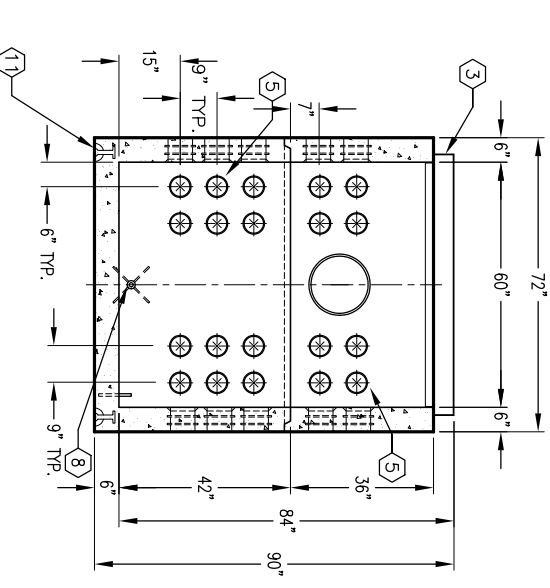
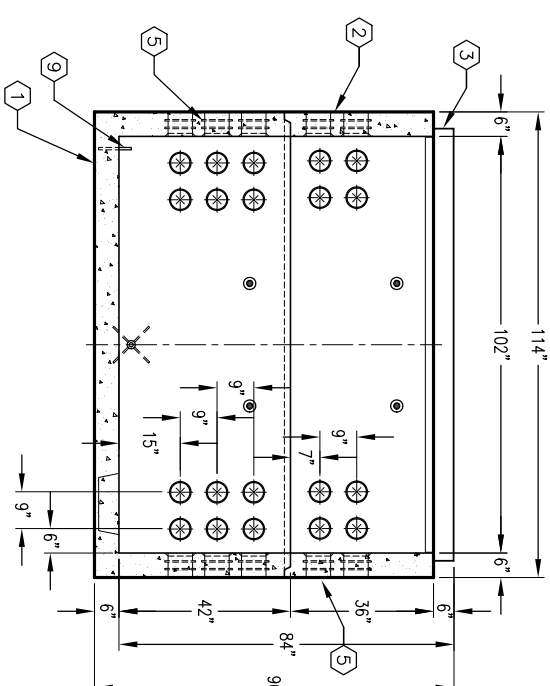
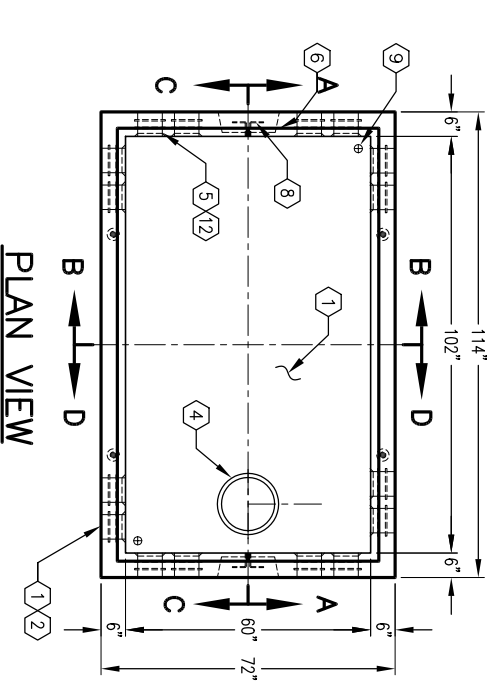
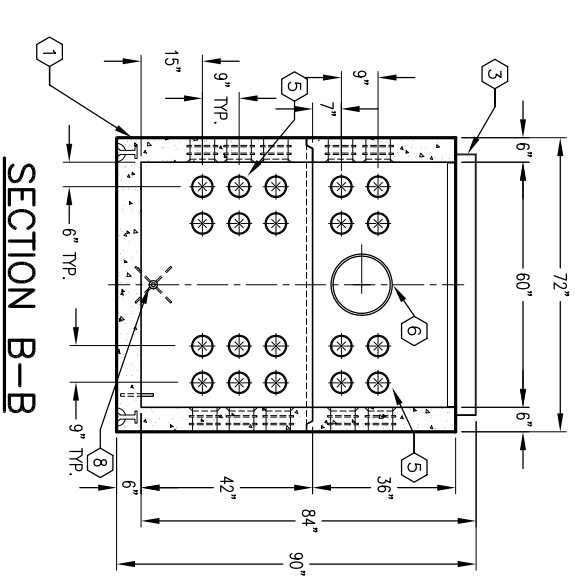
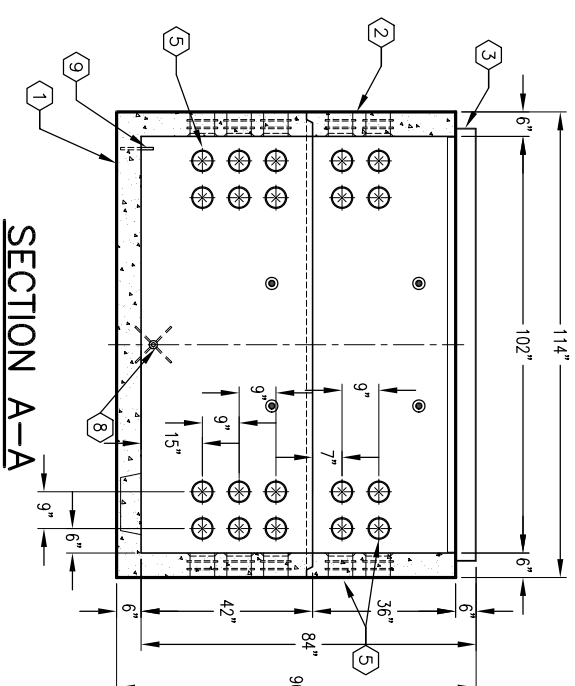
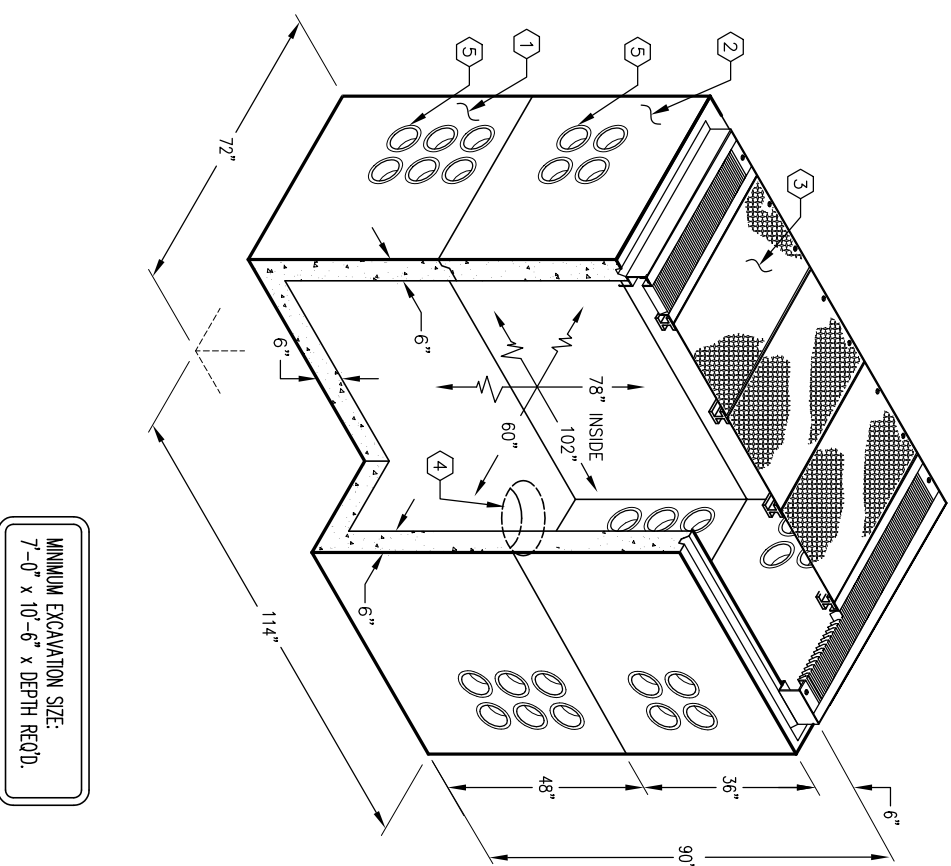
ORDERING INFORMATION:

K586-TE82-21P FOR ASSEMBLY AS SHOWN.
APPROVED FOR CITY OF RIVERSIDE SPEC. UCS-760
TOTAL WEIGHT OF ASSEMBLY AS SHOWN: 19,732 Lbs.

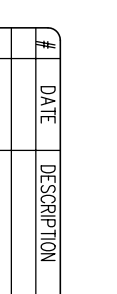
GENERAL NOTES:

1. Minimum soil bearing capacity is hereby assumed to be 2000 PSF unless otherwise documented by a geotechnical report that shall be provided to Jensen Precast by the end user. Jensen Precast shall not be held responsible for the soil bearing capacity.
2. Installation of Manholes, Vaults, Handholes, Meter Boxes etc. will be as per Jensen installation procedures.
3. Structural modification to the Jensen line of products is not permitted without prior written approval from Jensen Engineering Department. Do not scale the drawings, verify all dimensions including rough openings, if any discrepancies are found, notify the Jensen Engineer immediately.
5. The Jensen Engineer will interpret the intent of the drawings in case of possible conflict or discrepancy.
6. Permissible Variations: - The length, width, height, or dia. measurements of the structure when measured on the inside surfaces shall not deviate form design dimensions by more than the following:
Tolerance:
0 to 5 Feet 1/4"
5 to 10 Feet 3/8"
10 to 20 Feet as agreed upon between the supplier and purchaser.
Squarness Tolerance:
he inside of the precast concrete component shall be square as determined by diagonal measurements. The difference between such measurements shall not exceed the following:
Measured Length: Allowable Difference
0 to 10 Feet 1/2"
10 to 20 Feet 3/4"
20 Feet and over as agreed upon between the supplier and purchaser.
- 7.

1. PB586-B42-21 42" BOTTOM SECTION, WT. 11,888 Lbs.
2. PB586-T36-21, 36" TOP SECTION, WT. 6,344 Lbs.
3. CA586-PAL-21, LOOSE ADJUSTABLE GALV. FRAME (F586-PB-RIV) WITH (5) PIECE PARKWAY PAINTED ALUM. COVER & GRATE ASSEMBLY. INCLUDES (3) SC586-PAL-21 ALUM. PNT. COVERS, (2) SG586-120AL PNT. GRATE, (4) SCB586-112AL I-BEAMS, & (16) 1/2" x 1 1/2" S.S.H. BOLTS, WT. 1,500 LBS.
4. 13" x 14" DIA. SUMP x 5" DEEP. BOTTOM SECTION (1) CORE MTD.
5. 5" DIA. TERMS. BOTTOM SECTION (80) SHELL MTD.
6. 14" DIA. VENT KNOCKOUT x 4 1/2" DEEP. TOP SECTION (2) SHELL MTD.
8. X 1" DIA. COIL THRD. INSERT. BOTTOM SECTION (4) CORE MTD.
9. Ø 5/8" GROUND ROD ATTACHED TO REBAR, 3" PROJECTION x 6" LONG, BOTTOM SECTION (2) CORE MTD.



K586-TE82-21P
PER CITY OF RIVERSIDE SPEC. UCS-760



K586-TE82-21P
PER CITY OF RIVERSIDE SPEC. UCS-760

#	DATE	DESCRIPTION	BY