

10'-0" x 12'-0" AZUSA TRANSFORMER PAD W/5'-0" x 8'-6" ENCLOSURE x 60" DEEP

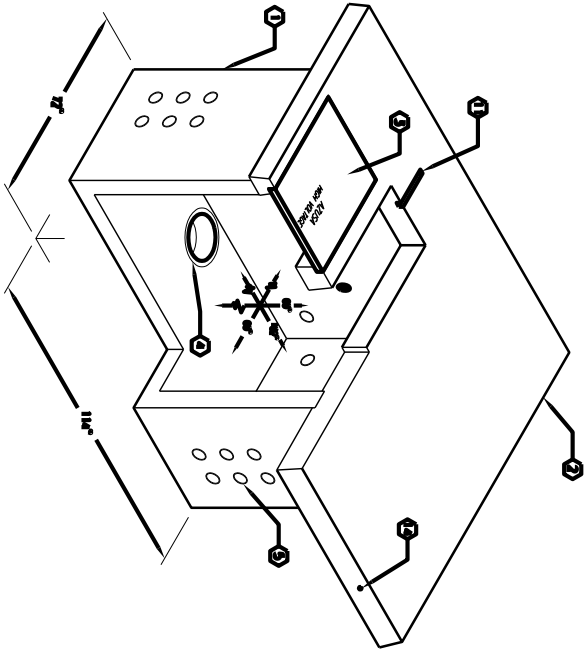
NOTES:

1. EXISTING FOR W-20-44 BENTON (LOADING USING 3,500 P.S.I. CONCRETE) AND EXISTING P.S.I. (GRADE 60) REINFORCED STEEL FOR CHALK, 7' 8" DEEP.
2. COVER EXISTING FOR REINFORCED CONCRETE.
3. ALL EXISTING SURFACES SHALL BE MAINTAINED WITH ONE COAT OF FLAT LATEX SPALL PAINT.
4. SPALL ENCLOSURE TO BE PLACED IN A 6" BENTON CONCRETE FOR THE DEPT. OF INSTALLATION AND TYPICAL LOAD DISTRIBUTION.

GENERAL NOTES:

1. MATERIALS AND FINISHES SHALL BE AS SHOWN.
2. APPROVED FOR AZUSA ONE EDD WORK FOR AZUSA ONE EDD PROJECT 21,370 NO. 10/10/02 SCALE TO BE ADJUSTED TO COME.

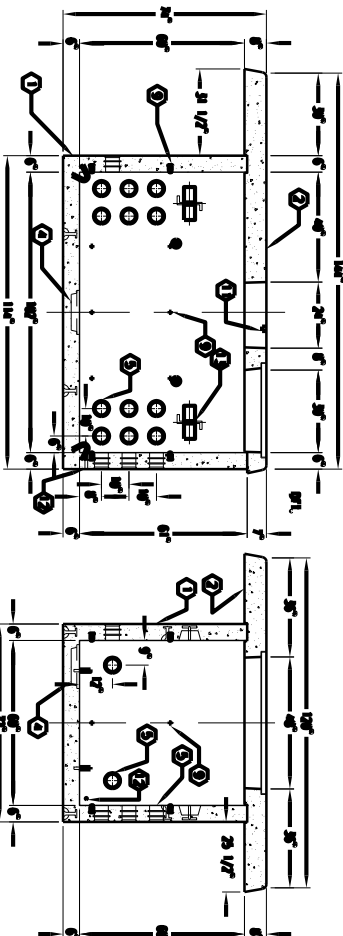
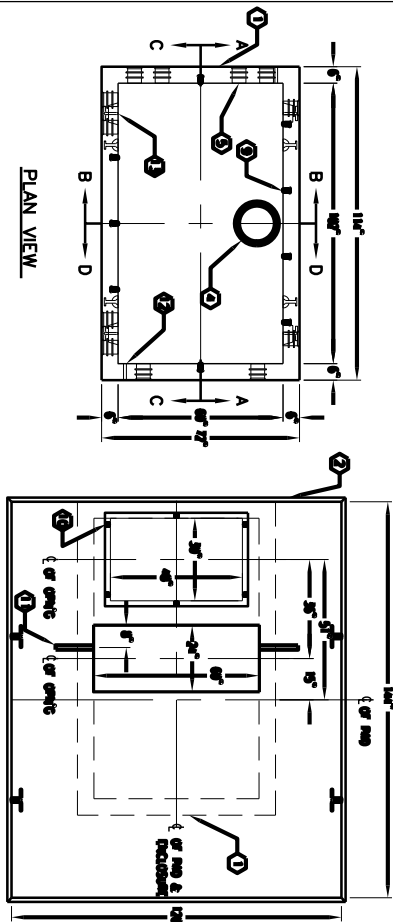
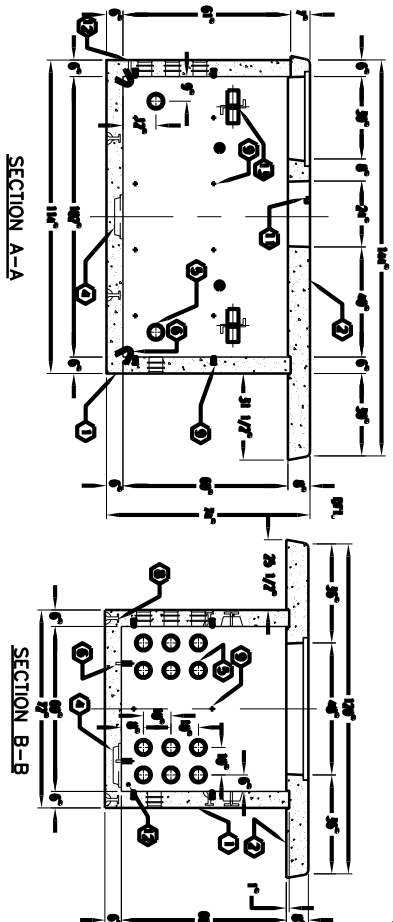
1. 3000-PSI-11.6" BRIDGE SECTION 14' 0" DEEP.
2. 3000-PSI-11.6" BRIDGE SECTION 14' 0" DEEP.
3. 3000-PSI-11.6" BRIDGE SECTION 14' 0" DEEP.
4. 3000-PSI-11.6" BRIDGE SECTION 14' 0" DEEP.
5. 3000-PSI-11.6" BRIDGE SECTION 14' 0" DEEP.
6. 3000-PSI-11.6" BRIDGE SECTION 14' 0" DEEP.
7. 3000-PSI-11.6" BRIDGE SECTION 14' 0" DEEP.
8. 3000-PSI-11.6" BRIDGE SECTION 14' 0" DEEP.
9. 3000-PSI-11.6" BRIDGE SECTION 14' 0" DEEP.
10. 3000-PSI-11.6" BRIDGE SECTION 14' 0" DEEP.
11. 3000-PSI-11.6" BRIDGE SECTION 14' 0" DEEP.
12. 3000-PSI-11.6" BRIDGE SECTION 14' 0" DEEP.
13. 3000-PSI-11.6" BRIDGE SECTION 14' 0" DEEP.
14. 3000-PSI-11.6" BRIDGE SECTION 14' 0" DEEP.



MINIMUM FOUNDATION SIZE  
7'-0" x 11'-0" x 10" MIN. (E.D.D.)



K586-SB60-31  
DIV. OF AZUSA ONE EDD  
03-01-02



K586-SB60-31  
DIV. OF AZUSA ONE EDD  
03-01-02