

8'-0" x 9'-4" LADWP DUCTED TUNNEL VAULT x 17'-0" LONG

NOTES:

- VAULT DESIGNED IN ACCORDANCE WITH AASHTO H-20-44 TRAFFIC BRIDGE AND 60,000 LBS. LOADING USING 3,500 PSI (3,928KPa) COMPRESSIVE STRENGTH CONCRETE AND 60,000 PSI (4,132KPa) YIELD STRENGTH ASTM A-706 STEEL REINFORCEMENT PER CALCS. #30444.
- VAULT TO BE PLACED ON 6" BASE OF CRUSHER RUN FOR EASE OF INSTALLATION AND EVEN LOAD DISTRIBUTION.
- LIMIT OF COVER OVER ROOF SECTION IS 1'-0" TO 4'-0".
- CONCRETE MIX USED IN POURING THIS PRODUCT SHALL USE FLY ASH AS AN ADMIXTURE.
- EACH CONCRETE SECTION SHALL BE MARKED ON THE INSIDE & OUTSIDE WITH "JENSEN PRECAST" THE DESIGNATION "DWP/FA", AND THE DATE OF POUR.
- EACH CONCRETE SECTION SHALL HAVE CAST-IN ON THE INSIDE "JENSEN", THE YEAR, AND THE DESIGNATION "FA".
- NO SHARP OR ROUGH EDGES ON THE TERMINATORS ENTERING THE VAULT.

THE FOLLOWING MATERIAL TO BE SHIPPED WITH VAULT:

- (a) 7/8" x 1 3/4" CONSEAL GASKET (135 FEET REQUIRED).
- (b) 1 5/8" GALVANIZED UNISTRUT x 92" LONG (06-2090) W/(6) 1/2"-13NC x 1 1/2" ROUND HEAD SLOTTED PLATED MACHINE SCREWS & (6) 1/2" PLATED WASHERS (6 REQUIRED).
- (c) 1 5/8" x 1 5/8" GALVANIZED UNISTRUT x 36" LONG (06-2086) W/(30) 1/2"-13NC x 1 1/2" ROUND HEAD SLOTTED PLATED MACHINE SCREWS & (30) 1/2" PLATED WASHERS (06-2085).
- (d) 1 5/8" x 1 5/8" GALVANIZED UNISTRUT x 32" LONG (06-2085) SCREWS & (2) 1/2" PLATED WASHERS (6 REQUIRED).
- (e) 1 5/8" x 1 5/8" GALVANIZED UNISTRUT x 22" LONG (06-2084) W/(2) 1/2"-13NC x 1 1/2" ROUND HEAD SLOTTED PLATED MACHINE SCREWS & (2) 1/2" PLATED WASHERS (6 REQUIRED).
- (f) 1/2" x 1 1/4" HEX HEAD S.S. BOLT (4 REQUIRED).
- (g) 3/4" x 20" COIL PIP (12 REQUIRED).
- (h) 3/8" x 1/2" x 1/2" NUT (24 REQUIRED).
- (i) LADDER HANGER ASSEMBLY (4 REQUIRED).
- (j) I-3382 LADDER 12' (1 REQUIRED).

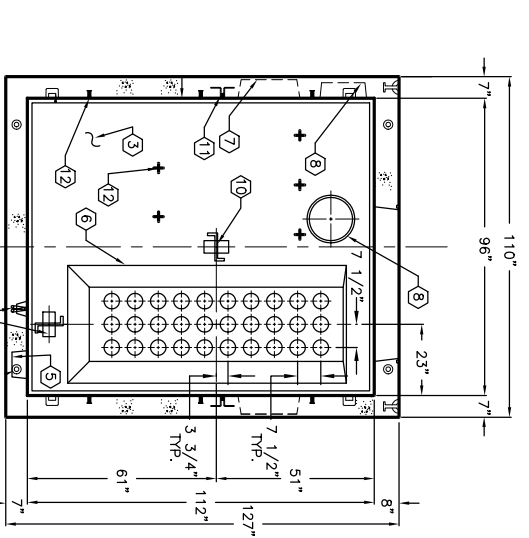
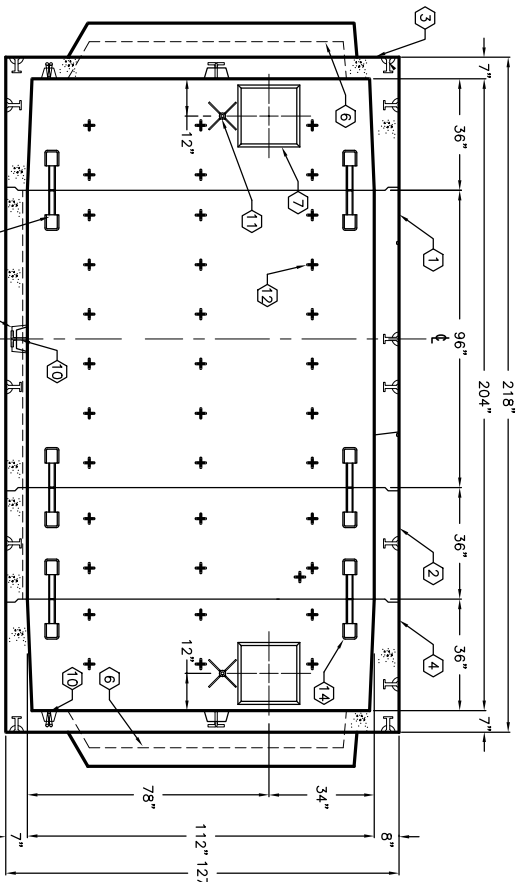
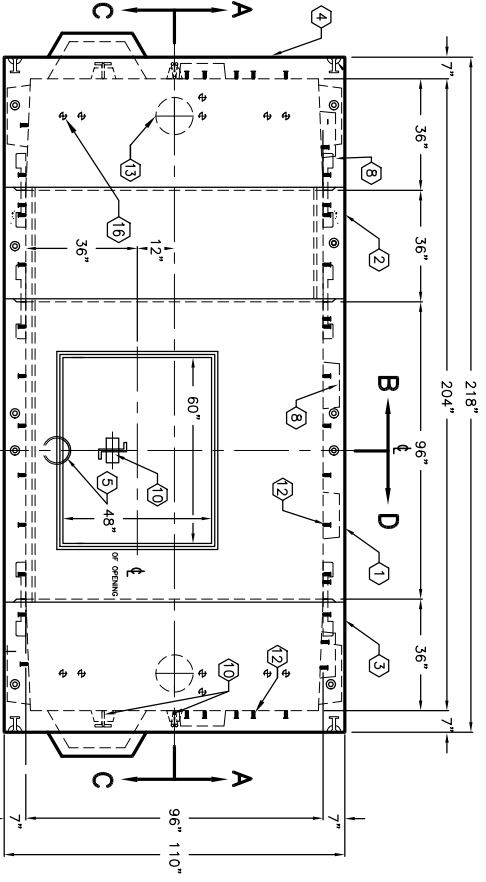
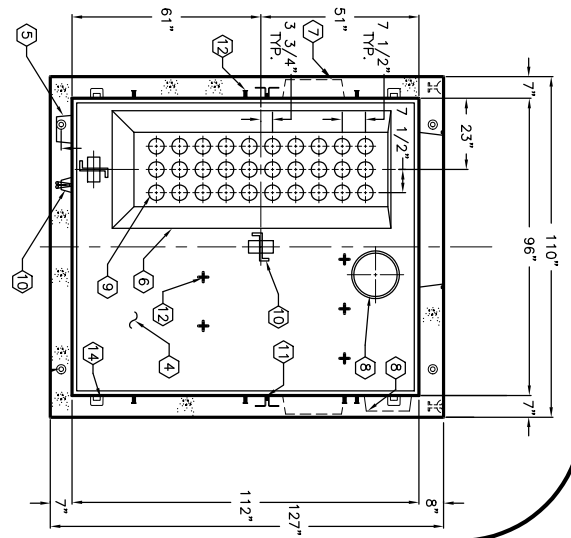
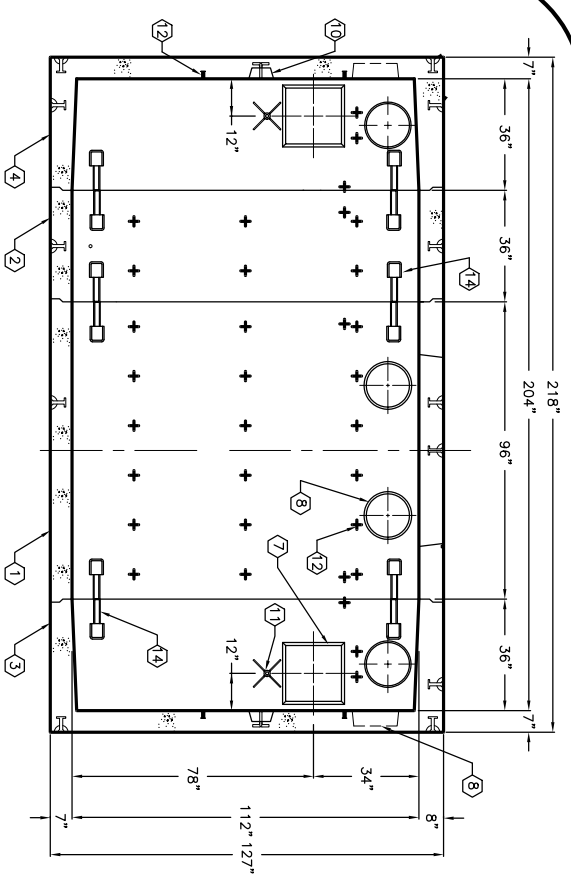
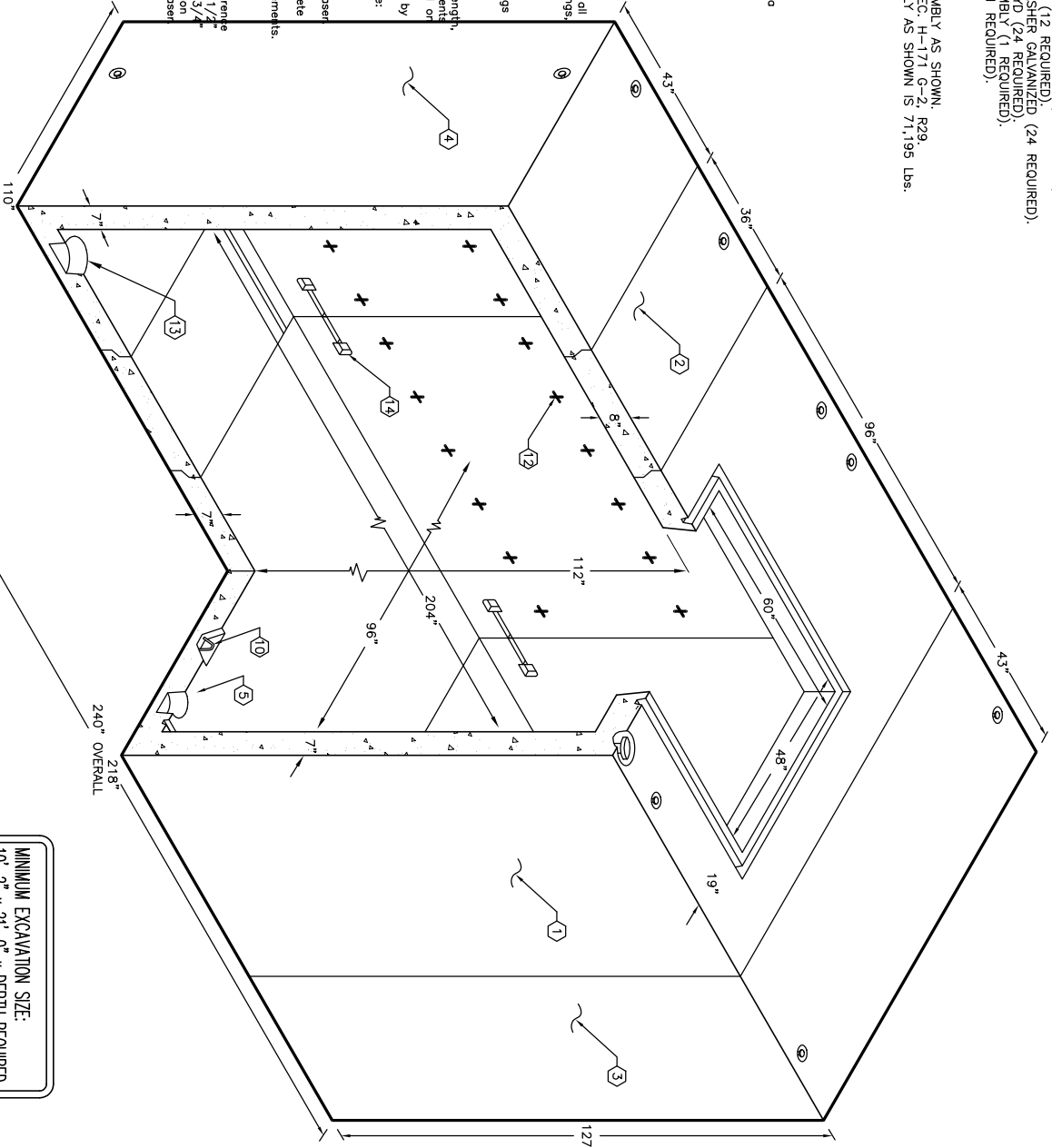
ORDERING INFORMATION:

K894-TV17-12 FOR ASSEMBLY AS SHOWN,
APPROVED FOR LADWP SPEC. H-171 G-2, R29.
TOTAL WEIGHT OF ASSEMBLY AS SHOWN IS 71,195 Lbs.

GENERAL NOTES:

1. Minimum soil bearing capacity is hereby assumed to be 2000 PSF unless otherwise documented by a geotechnical engineer. The engineer provided to Jensen Precast by the end user, Jensen Precast shall not be held responsible for the soil bearing capacity.
2. Installation of Manholes, Vaults will be as per Jensen installation procedures.
3. Structural modification to the Jensen line of products is not permitted without prior written approval from the Jensen Engineering Department.
4. Do not scale the drawings, verify all dimensions including rough openings, if any discrepancies are found, notify the Jensen Engineer.
5. The Jensen Engineer will interpret the intent of the drawings in case of possible conflict or discrepancy.
6. Permissible Tolerances - The length, width, height, or dia. measurement of the structure when measured on the inside surfaces shall not deviate from design dimensions by more than the following: Tolerance: 0 to 5 Feet 1/4" 5 to 10 Feet 3/8" 10 to 20 Feet as agreed upon between the supplier and purchaser Squariness Tolerance: One (1) side of the precast concrete structure shall be square as determined by diagonal measurements. The difference between such measurements shall not exceed the following: 1/4" 0 to 5 Feet 3/8" 5 to 10 Feet 1/2" 10 to 20 Feet as agreed upon between the supplier and purchaser
- 7.

1. T894-C96-12, 96" INTERMEDIATE SECTION, WT. 24,673 Lbs.
2. T894-R36-12, 36" EXTENSION SECTION, WT. 10,056 Lbs.
3. T894-E36-12A1, 36" END SECTION, WT. 18,233 Lbs.
4. T894-E36-12B1, 36" END SECTION, WT. 18,233 Lbs.
5. INTERMEDIATE SECTION (1) CORE MTD. LOCATE AS FOLLOWS: INTERMEDIATE SECTION (1) CORE MTD.
6. 24" x 82" DUCTED KNOCKOUT x 12" DEEP. DRAFT AS FOLLOWS: T=1", S1=7", S2=7", B=7". LOCATE AS FOLLOWS: END SECTION (1) EACH CORE MTD.
7. 18" x 18" KNOCKOUT x 6" DEEP. DRAFT 1" TYPICAL ALL SIDES. LOCATE AS FOLLOWS: END SECTION (2) EACH CORE MTD.
8. 14" DIA. x 15" DIA. VENT KNOCKOUT x 5" DEEP. LOCATE AS FOLLOWS: INTERMEDIATE SECTION (2) CORE MTD., END SECTION (2) EACH CORE MTD.
9. 5" DIA. CONTERM (S563 G). LOCATE AS FOLLOWS: END SECTION (30) EACH SURFACE MTD.
10. 7/8" DIA. x 61 1/2" GALVANIZED PULL IRON WITH LEGS. SECOND (2) EACH INTERMEDIATE SECTION (1) CORE MTD.; END SECTION (2) EACH CORE MTD.
11. X1 1/2" GALVANIZED COIL THREADED INSERT. LOCATE AS FOLLOWS: END SECTION (2) EACH CORE MTD.
12. +1/2" PLASTIC INSERT. LOCATE AS FOLLOWS: INTERMEDIATE SECTION (38) CORE MTD.; EXTENSION SECTION (14) CORE MTD.; END SECTION (14) EACH CORE MTD.
13. 12" DIA. KNOCKOUT. LOCATE AS FOLLOWS: END SECTION (2) EACH CORE MTD.
14. D=960 BOLT-UP CASTING W/ REGRESS. LOCATE AS FOLLOWS: INTERMEDIATE SECTION (1) EACH CORE MTD. (8) CORE MTD. END SECTION (1) EACH CORE MTD.
16. 2" DIA. TERMS W/1" DIA. GROUND ROD KNOCKOUT. LOCATE AS FOLLOWS: END SECTION (6) EACH CORE MTD.



JENSEN
PRECAST

K894-TV17-12

PER LADWP SPEC. H-171, G-2, R29 03-01-02

JENSEN
PRECAST

K894-TV17-12

PER LADWP SPEC. H-171, G-2, R29 03-01-02

#	DATE	DESCRIPTION	BY