

8'-0" x 9'-4" LADWP INTERCEPT TUNNEL VAULT x 17'-0"

NOTES:

- VAULT DESIGNED IN ACCORDANCE WITH AASHTO H-20-44 TRAFFIC BRIDGE LOADING USING 5,500 PSI COMPRESSIVE STRENGTH CONCRETE AND 60,000 PSI YIELD STRENGTH ASTM A-706 STEEL REINFORCEMENT PER CALCS. #31609
- VAULT TO BE PLACED ON A MIN. 6" BASE OF CRUSHER RUN FOR EASE OF INSTALLATION AND EVEN LOAD DISTRIBUTION.
- LIMITS OF COVER OVER ROOF SECTION IS 1'-0" TO 4'-0".
- CONCRETE MIX USED IN POURING THIS PRODUCT SHALL USE FLY ASH AS AN ADMIXTURE.
- EACH CONCRETE SECTION SHALL BE MARKED ON THE INSIDE & OUTSIDE WITH "JENSEN", AND THE DESIGNATION "DWP/FA.", AND THE DATE OF POUR.
- EACH CONCRETE SECTION SHALL HAVE CAST-IN ON THE INSIDE "JENSEN", THE YEAR, AND THE DESIGNATION "FA."
- NO SHARP OR ROUGH EDGES ON THE TERMINATORS ENTERING THE VAULT.

THE FOLLOWING MATERIAL TO BE SHIPPED WITH VAULT:

- a) 7/8" x 1 3/4" CONSEAL GASKET (92 FEET REQ'D.)
- b) 1 5/8" GALV. UNISTRUT x 92" LONG (SST080), W/ (6) 1/2" x 1 1/2" ROUND HEAD SLOTTED PLATED MACHINE SCREWS (PFA20193) & (6) 1/2" PLATED WASHER.
- c) 1 5/8" x 1 5/8" GALV. UNISTRUT x 36" LONG. (12) 1/2" x 1 1/2" ROUND HEAD SLOTTED PLATED MACHINE SCREWS (PFA20193) & (12) 1/2" PLATED WASHER.(2 REQ'D.)
- d) 1 5/8" x 1 5/8" GALV. UNISTRUT x 22" LONG. (2) 1/2" x 1 1/2" ROUND HEAD SLOTTED PLATED MACHINE SCREWS (PFA20193) & (2) 1/2" PLATED WASHER.(6 REQ'D.)
- e) 3/4" x 20" COIL PYD. (12 REQ'D.)
- f) 7/8" x 1/2" x 3" WASHER GALV. (24 REQ'D.)
- g) 3/4" HEX COIL NUT PYD (24 REQ'D.)
- h) LADDER HANGER ASSEMBLY (1 REQ'D.)
- j) I-3382 LADDER 12' (1 REQ'D.)

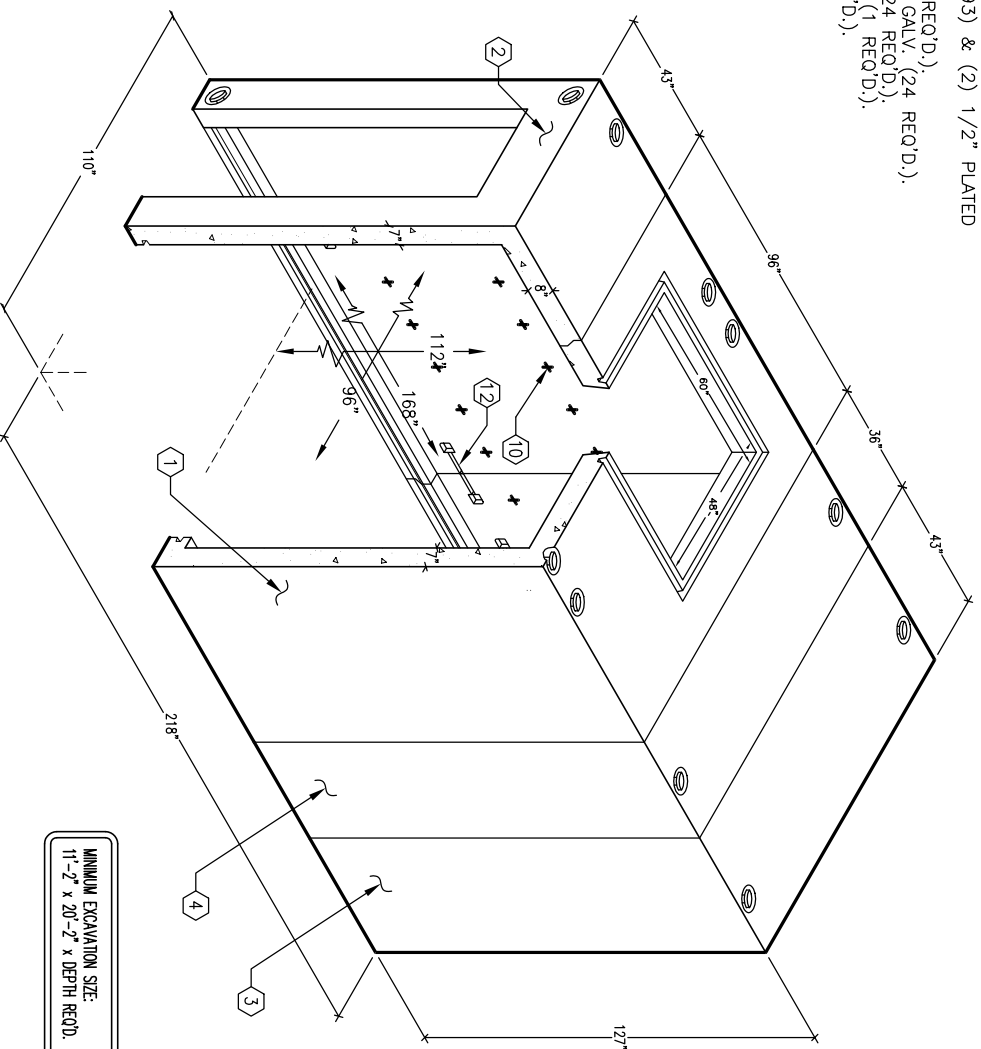
GENERAL NOTES:

1. Minimum soil bearing capacity is SF. If not assumed to be provided by a geotechnical report that shall be provided to Jensen Precast by the end user. Jensen Precast shall not be held responsible for the soil bearing capacity. Installation of Manholes, Vaults, Handholes, Meter Boxes etc. will be as per Jensen installation procedures.
2. Structural modification to the structure and products is not permitted without written approval from Jensen Engineering Department. Do not scale the drawings, verify all dimensions including rough openings, if any discrepancies are found, notify the Jensen Engineer immediately.
3. The Jensen Engineer will interpret the intent of the drawings in case of possible conflict or discrepancy.
4. Dimensional Tolerances - The length, width, height, or dia. measurements of the inside surfaces shall not deviate from design dimensions by more than the following:
 - Dimensions: Tolerance:
 - 0 to 5 Feet 1/4"
 - 5 to 10 Feet 3/8"
 - 10 to 20 Feet as agreed upon
5. Squariness tolerance: Between the supplier and purchaser. The inside of the precast concrete shall be square.
6. Diagonal measurements: The difference between such measurements shall not exceed the following:
 - Measured Length: Allowable Difference
 - 0 to 10 Feet 1/2"
 - 10 to 20 Feet 3/4"
7. 20 Feet and over as agreed upon between the supplier and purchaser.

1. T/894-C961-12, 96" CENTER SECTION, WT. 20,867#.
2. T/894-E361-12, 36" END SECTION, WT. 14,389#.
3. T/894-E361-12B, 36" EXTENSION SECTION, WT. 14,389#.
4. T/894-R361-12, 36" EXTENSION SECTION, WT. 8,075#.
5. OPTIONAL 18" x 18" K.O. x 6" DEEP. SPCL. ORDER ONLY. SIDES. LOCATE AS FOLLOWS: END SECTION (2) EACH SHELL MTD. 14" x 15" DIA. VENT K.O. x 5" DEEP. LOCATE AS FOLLOWS: INT. SECTION (2) SHELL MTD.; END SECTION (2) EACH SHELL MTD. 7/8" x 4 1/2" GALV. PULL IRON. LOCATE AS FOLLOWS: END SECTION (2) EACH CORE MTD. INSERT. LOCATE AS FOLLOWS: 1 1/2" GALV. COIL THRD. INSERT. ORDER REQ' OPPOSITE K.O. END SECTION (2) EACH CORE MTD. SPCL. ORDER REQ' AS FOLLOWS: INT. SECTION (32) CORE MTD.; EXT. SECTION (32) CORE MTD.; 1/2" PLASTIC INSERT. LOCATE AS FOLLOWS: (38) CORE MTD.; END SECTION (24) EACH CORE MTD.; EXT. SECTION (12) CORE MTD.
6. DIA. TERMINATOR. LOCATE AS FOLLOWS: END SECTION (6) EACH SHELL MTD.
7. #950 BOLT-UP CASTING, W/RECESS. LOCATE AS FOLLOWS: INT. SECTION (8) CORE MTD.; END SECTION (4) EACH CORE MTD. EXT. SECTION (8) CORE MTD.
8. #4 REBAR x 72" LONG (16) REQ'D TO BE SHIPPED WITH VAULT. LOCATED AS FOLLOWS: (8) EACH PER END SECTION.
9. 1 1/2" x 1 1/2" x 3/16" STEEL ANGLE STIFFENERS x 33" LONG. (12) REQ'D. LOCATED AS FOLLOWS: (6) EACH PER END SECTION.

ORDERING INFORMATION:

K894-TV17-121 FOR ASSEMBLY AS SHOWN.
 APPROVED FOR LADWP SPEC. H-172 G2, R32
 TOTAL WEIGHT OF ASSEMBLY SHOWN IS 57,720#.

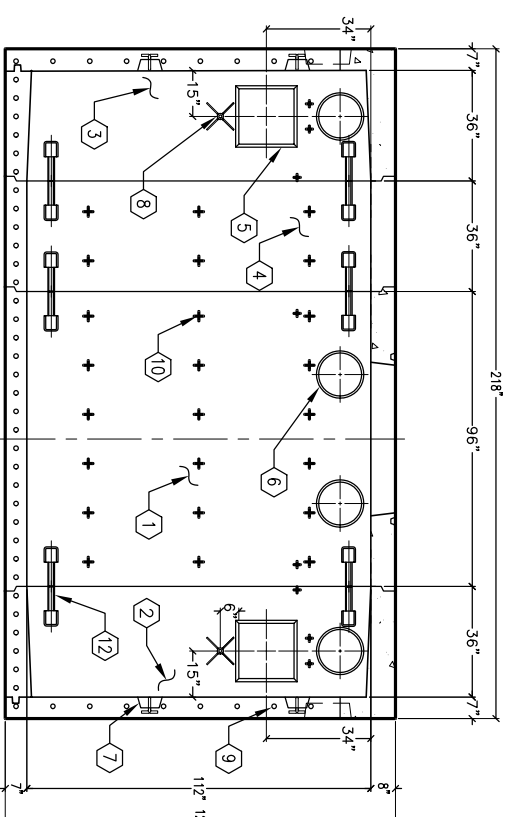


AUTOCAD REL. 14

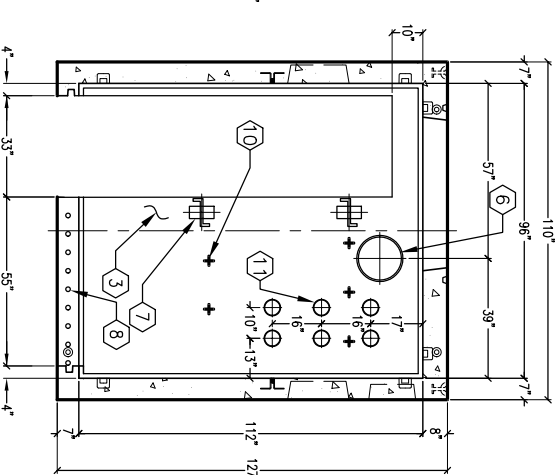
K894-TV17-121

PER LADWP SPEC. H-172, G2, R32

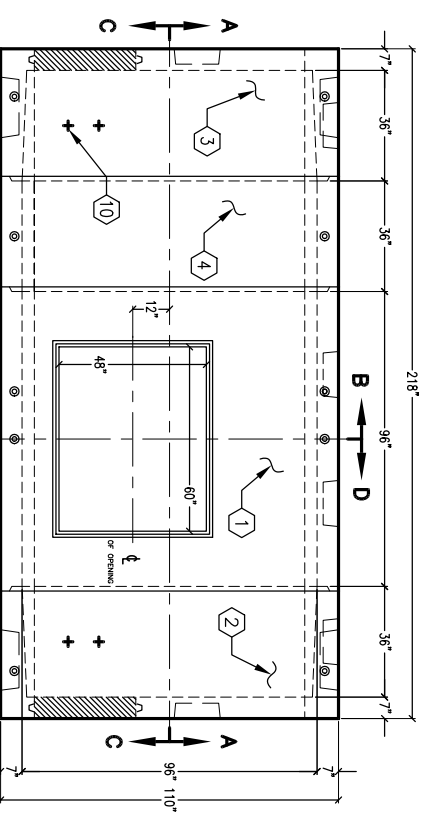
03-01-02



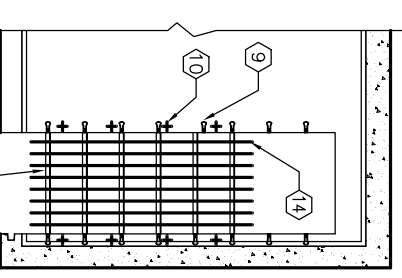
SECTION A-A



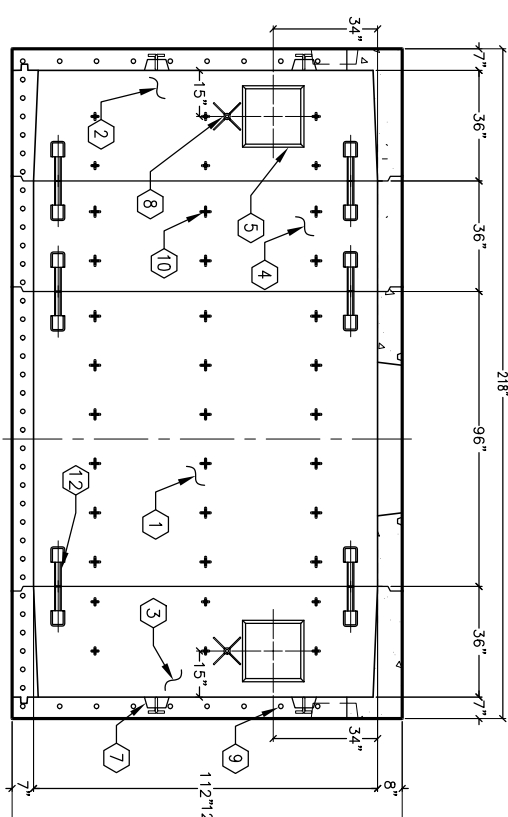
SECTION B-B



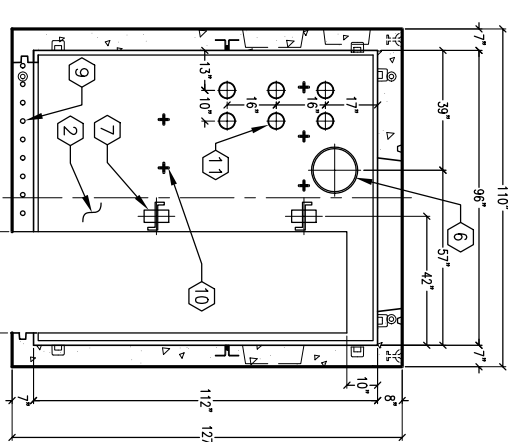
PLAN VIEW



TYP. END SEC. OPENING DETAIL



SECTION C-C



SECTION D-D



K894-TV17-121

PER LADWP SPEC. H-172, G2, R32

03-01-02

#	DATE	DESCRIPTION	BY