

10'-0" x 10'-6" LADWP TRANSFORMER PAD W/8'-0" x 9'-4" ENCLOSURE X 60" DEEP

NOTES:

- VAULT DESIGNED IN ACCORDANCE WITH L.A.D.W.P. SPEC. C721 USING 5,500 PSI [37.92MPa] COMPRESSIVE STRENGTH CONCRETE AT 28 DAYS AND 60,000 PSI [413.2MPa] YIELD STRENGTH ASTM A-706 STEEL REINFORCEMENT PER CALC. #31452.

- VAULT TO BE PLACED ON A MIN. 6" BASE OF CRUSHER RUN FOR EASE OF INSTALLATION AND EVEN LOAD DISTRIBUTION.
- CONCRETE MIX USED IN POURING THIS PRODUCT SHALL USE FLY ASH AS AN ADMIXTURE.
- EACH CONCRETE SECTION SHALL BE MARKED ON THE INSIDE & OUTSIDE WITH "JENSEN PRECAST" THE DESIGNATION "DWP/FA.", AND THE DATE OF POUR
- EACH CONCRETE SECTION SHALL HAVE CAST-IN ON THE INSIDE "JENSEN" THE YEAR, AND THE DESIGNATION "FA."

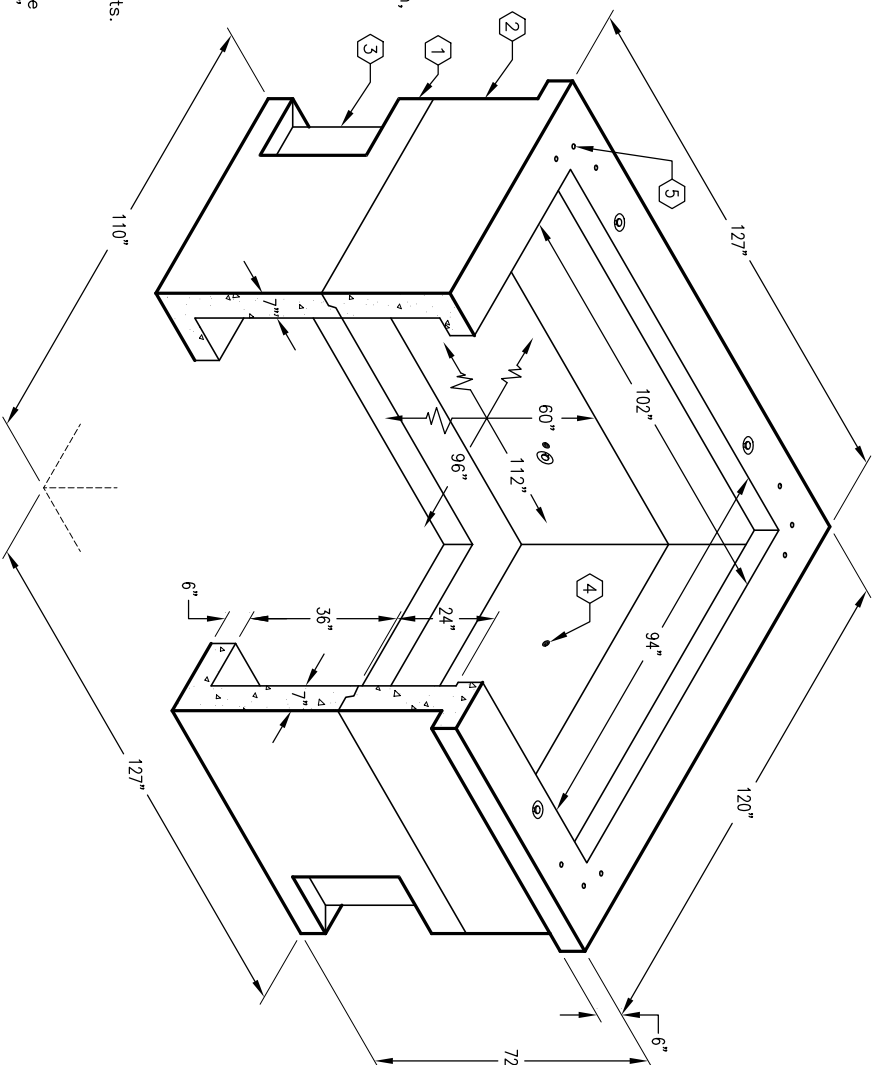
ORDERING INFORMATION:

K10106-SB60-12 FOR ASSEMBLY AS SHOWN.
APPROVED FOR LADWP SPEC. UB 721-11.
TOTAL WEIGHT OF ASSEMBLY IS 21,687 Lbs.

GENERAL NOTES:

- Minimum soil bearing capacity is hereby assumed to be 2000 PSF unless otherwise documented by a geotechnical report that shall be provided to Jensen Precast by the end user. Jensen Precast shall not be held responsible for the soil bearing capacity.
- Installation of Manholes, Vaults, Handholes, Meter Boxes etc. will be as per Jensen Installation procedures.
- Structural modification to the Jensen line of products is not permitted without prior written approval from Jensen Engineering Department.
- Do not scale the drawings, verify all dimensions including rough openings, if any discrepancies are found, notify the Jensen Engineer immediately.
- The Jensen Engineer will interpret the intent of the drawings in case of possible conflict or discrepancy.
- Permissible Variations:
Dimensional Tolerances – The length, width, height, or dia. measurements of the structure when measured on the inside surfaces shall not deviate from design dimensions by more than the following:
Dimensions: Tolerance:
0 to 5 Feet 1/4"
5 to 10 Feet 3/8"
10 to 20 Feet as agreed upon between the supplier and purchaser.
Squariness Tolerance:
The inside of the precast concrete component shall be square as determined by diagonal measurements. The difference between such measurements shall not exceed the following:
Measured Length: Allowable Difference
0 to 10 Feet 1/2"
10 to 20 Feet 3/4"
20 Feet and over as agreed upon between the supplier and purchaser.

- SB894-B36-12, 36" BOTTOM SECTION, WT. 12,331 Lbs.
- SB894-T24-12, 24" TRANSFORMER PAD, WT. 9,356 Lbs.
- 16" x 26" CORNER KNOCKOUT x 5 1/2" DEEP, DRAFT AS FOLLOWS:
T=2", S1=3 1/2", S2=2", B2=2", BOTTOM SECTION (8) SHELL MTD.
X 1" DIA. COIL THREADED INSERT, BOTTOM SECTION (4) CORE MTD.
- 1/2" P-35-T INSERT, TRANSFORMER PAD (12) SURFACE MTD.



MINIMUM EXCAVATION SIZE:
11'-0" x 11'-6" X DEPTH REQ'D.

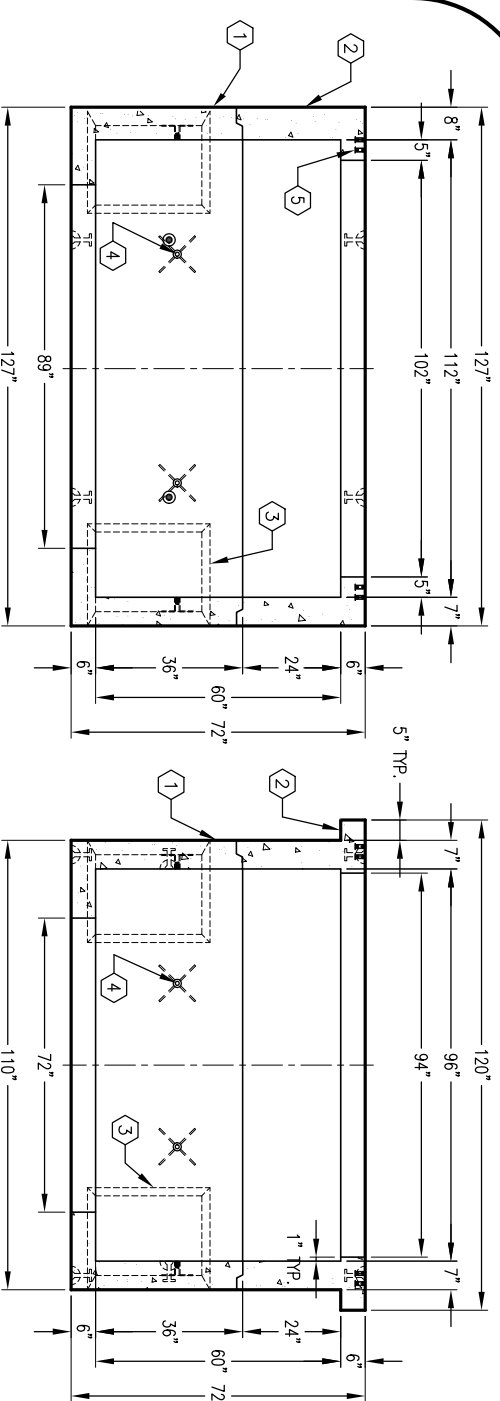
K10106-SB60-12

PER LADWP SPEC. UB 721-11 R2

03-01-02

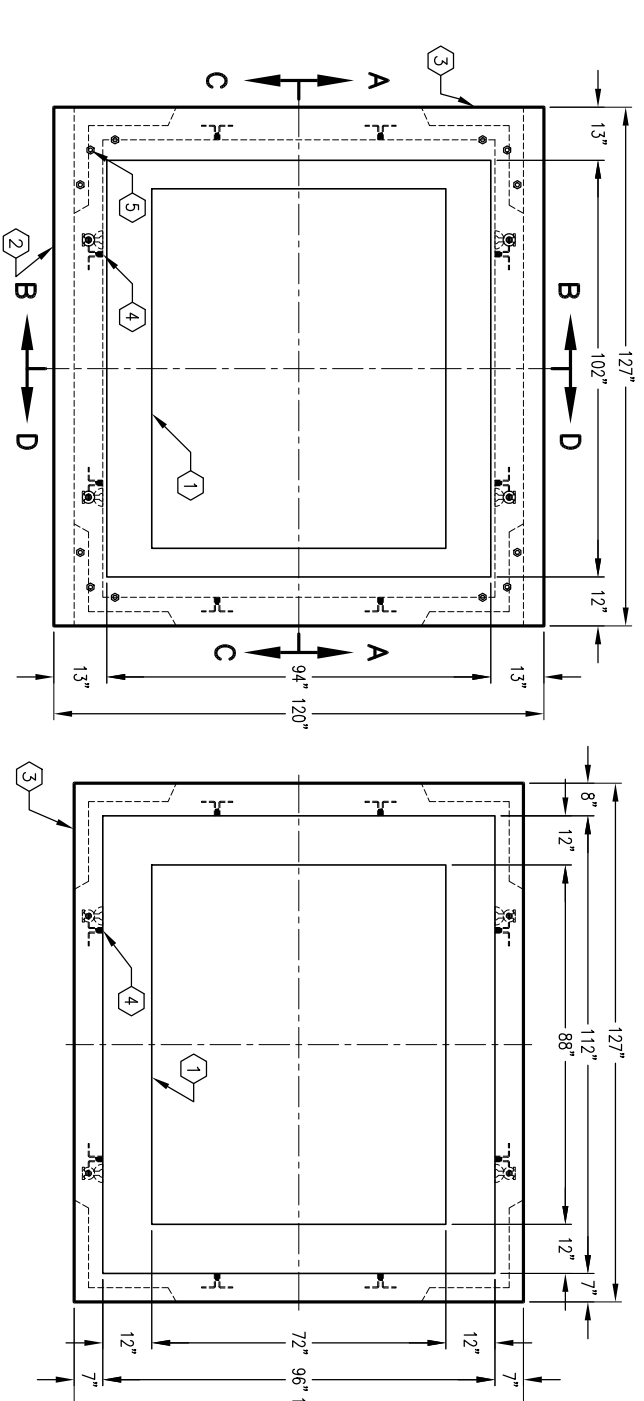
JENSEN
PRECAST

AUTOCAD REL. 14



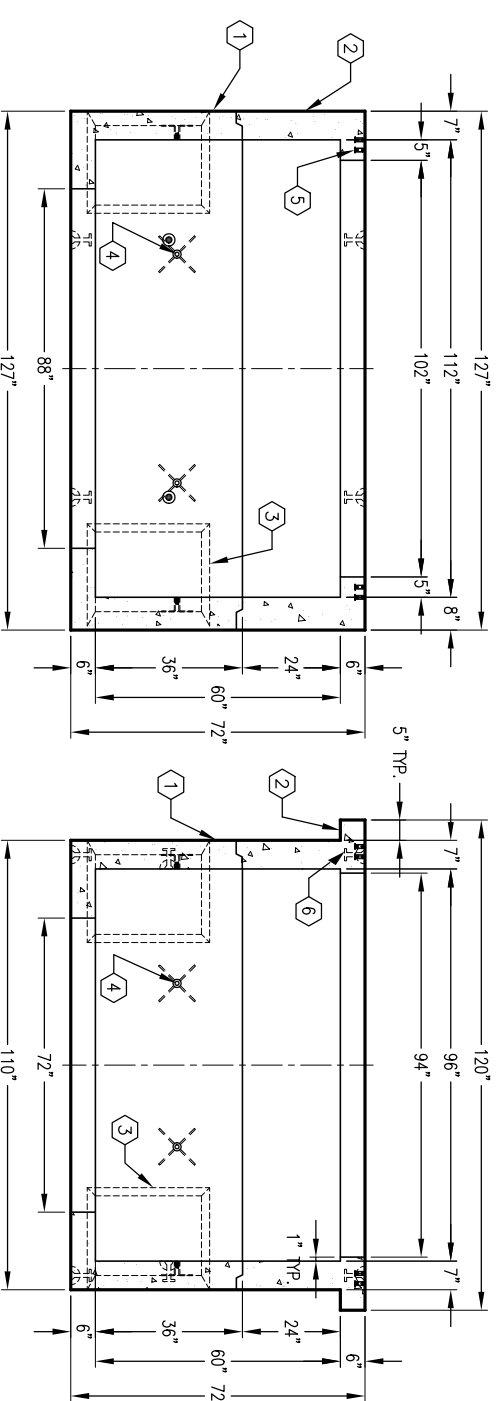
SECTION A-A

SECTION B-B



PLAN VIEW

ENCLOSURE W/O PAD



SECTION C-C

SECTION D-D

JENSEN
PRECAST

#	DATE	DESCRIPTION	BY

K10106-SB60-12

PER LADWP SPEC. UB 721-11 R2

03-01-02