

8'-0" x 9'-4" LADWP TRANSMISSION TUNNEL VAULT x 34'-0" LONG

NOTES:

- VAULT DESIGNED IN ACCORDANCE WITH AASHTO H-20-44 TRAFFIC BRIDGE LOADING USING 5,500 PSI [37,92MPa] COMPRESSIVE STRENGTH CONCRETE AND 60,000 PSI [413.2MPa] YIELD STRENGTH ASTM A-706 STEEL REINFORCEMENT PER CALCS. #31893.
- VAULT DESIGNED IN ACCORDANCE WITH LADWP SPEC. 9610 AND SPEC. P178-RS.
- VAULT TO BE PLACED ON 6" BASE OF CRUSHER RUN FOR EASE OF INSTALLATION AND EVEN LOAD DISTRIBUTION.
- LIMIT OF COVER OVER ROOF SECTION IS 1'-0" TO 4'-0".
- CONCRETE MIX USED IN POURING THIS PRODUCT SHALL USE FLY ASH AS AN ADMIXTURE.
- EACH CONCRETE SECTION SHALL BE MARKED ON THE INSIDE & OUTSIDE WITH "JENSEN PRECAST", THE DESIGNATION "DWP/FA.", AND THE DATE OF POUR.
- EACH CONCRETE SECTION SHALL HAVE CAST-IN ON THE INSIDE "JENSEN", THE YEAR, AND THE DESIGNATION "FA."
- NO SHARP OR ROUGH EDGES ON THE TERMINATORS ENTERING THE VAULT.
- THE FOLLOWING MATERIAL TO BE SHIPPED WITH VAULT:

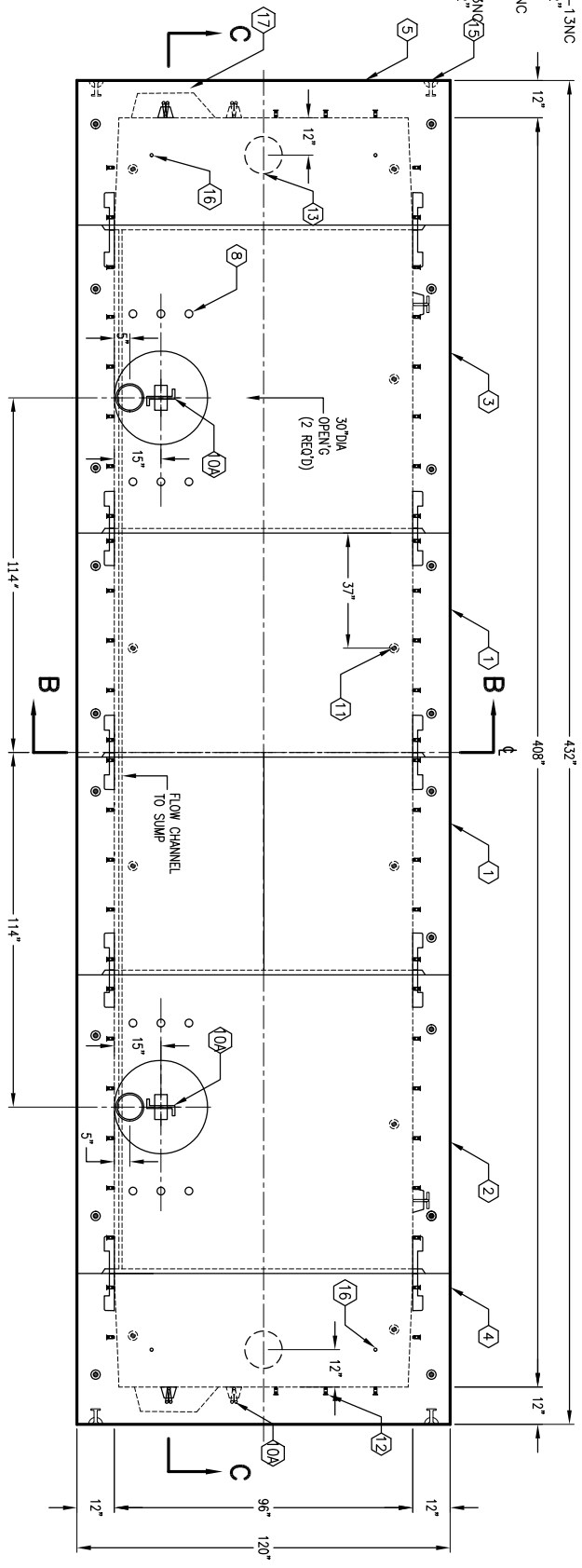
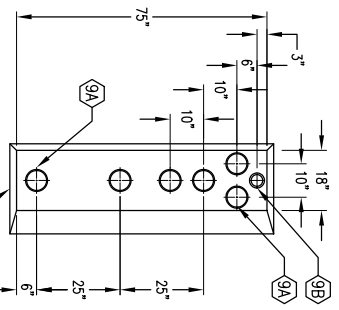
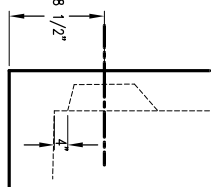
- (a) 7/8" x 1 3/4" CONSEAL GASKET.
- (b) 1 5/8" x 1 5/8" GALVANIZED UNISTRUT x 92" LONG (12) W/(72) 1/2"-13NC x 1 1/2" ROUND HEAD SLOTTED PLATED MACHINE SCREWS & (72) 1/2" PLATED WASHERS (12 REQUIRED).
- (c) 1 5/8" x 1 5/8" GALVANIZED UNISTRUT x 36" LONG (6) W/(12) 1/2"-13NC x 1 1/2" ROUND HEAD SLOTTED PLATED MACHINE SCREWS & (12) 1/2" PLATED WASHERS (12 REQUIRED).
- (d) 1 5/8" x 1 5/8" GALVANIZED UNISTRUT x 22" LONG (2) W/ 1/2"-13NC x 1 1/2" ROUND HEAD SLOTTED PLATED MACHINE SCREWS & (6) 1/2" PLATED WASHERS (6 REQUIRED).
- (e) 1 5/8" x 1 5/8" GALVANIZED UNISTRUT x 68" LONG (12) W/ 1/2"-13NC x 1 1/2" ROUND HEAD SLOTTED PLATED MACHINE SCREWS & (60) 1/2" PLATED WASHERS (60 REQUIRED).
- (f) 3/4" x 20" COIL PVD (20 REQUIRED).
- (g) 7/8" x 1 1/2" x 3" WASHER GALVANIZED (40 REQUIRED).
- (h) 3/4" HEX COIL NUT PVD (40 REQUIRED).
- (i) I-3885 LADDER 11' (2 REQUIRED).

ORDERING INFORMATION:

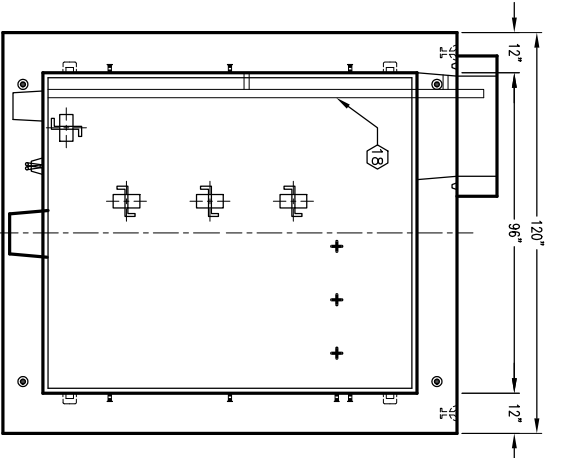
K894X-TV34-12 FOR ASSEMBLY AS SHOWN.
 APPROVED FOR LADWP SPEC. H-240
 TOTAL WEIGHT OF ASSEMBLY AS SHOWN IS 231,200 lbs.

GENERAL NOTES:

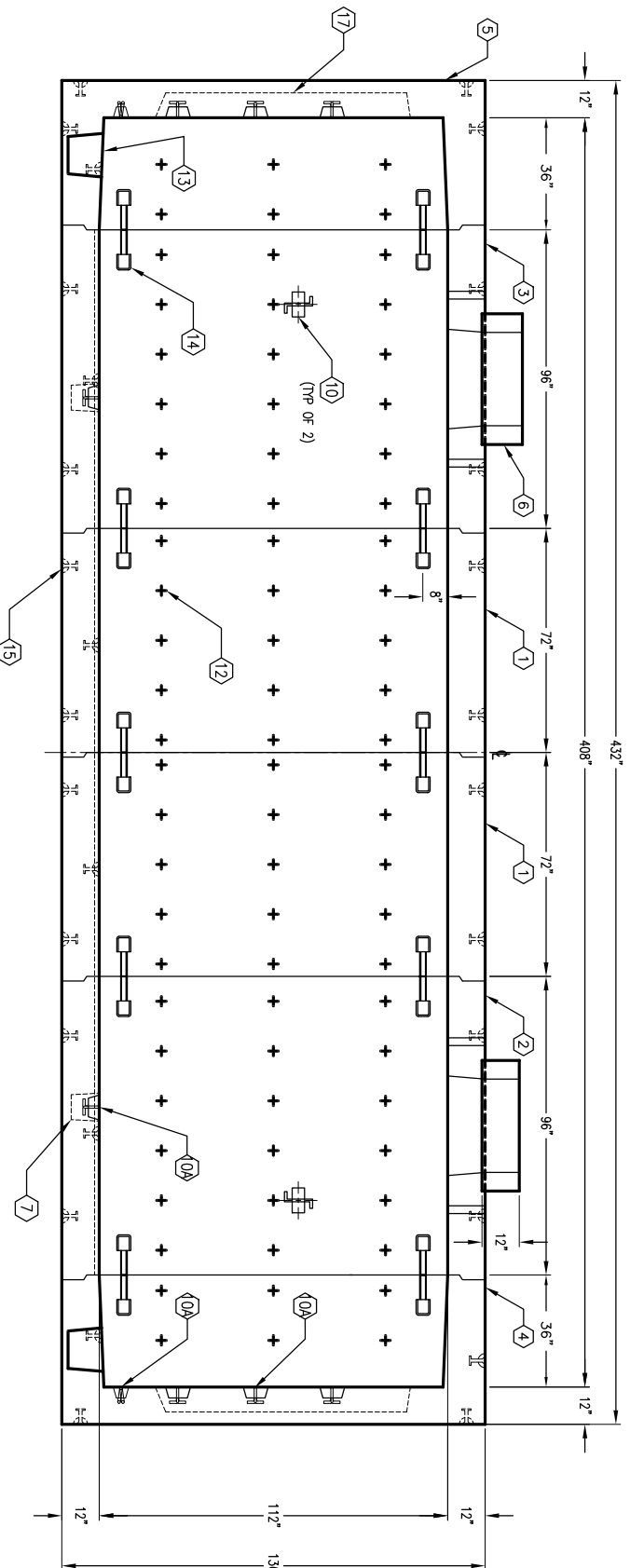
1. Minimum soil bearing capacity is hereby assumed to be 2000 PSF unless otherwise documented by a geotechnical report that shall be provided to Jensen Precast by the end user. Jensen Precast shall not be held responsible for the soil bearing capacity.
2. Installation of Manholes, Vaults, Handholes, Meter Boxes etc. will be as per Jensen installation procedures.
3. Structural modification to the Jensen line of products is not permitted without prior written approval from Jensen Engineering Department.
4. Do not scale the drawings, verify all dimensions including rough openings, if any discrepancies are found, notify the Jensen Engineer immediately.
5. The Jensen Engineer will interpret the intent of the drawings in case of possible conflict or discrepancy.
6. Permissible Variations:
 Dimensional Tolerances - The length, width, height, or dia. measurements of the structure when measured on the inside surfaces shall not deviate from design dimensions by more than the following:
 Dimensions: Tolerance:
 0 to 5 Feet 1/4"
 5 to 10 Feet 3/8"
 10 to 20 Feet 1/2"
 Squaresness Tolerance:
 The inside of the precast concrete component shall be square as determined by diagonal measurements. The difference between such measurements shall not exceed the following:
 Measured Length: Allowable Difference
 0 to 10 Feet 1/2"
 10 to 20 Feet 3/4"
 20 Feet and over as agreed upon between the supplier and purchaser.
- 7.



PLAN VIEW



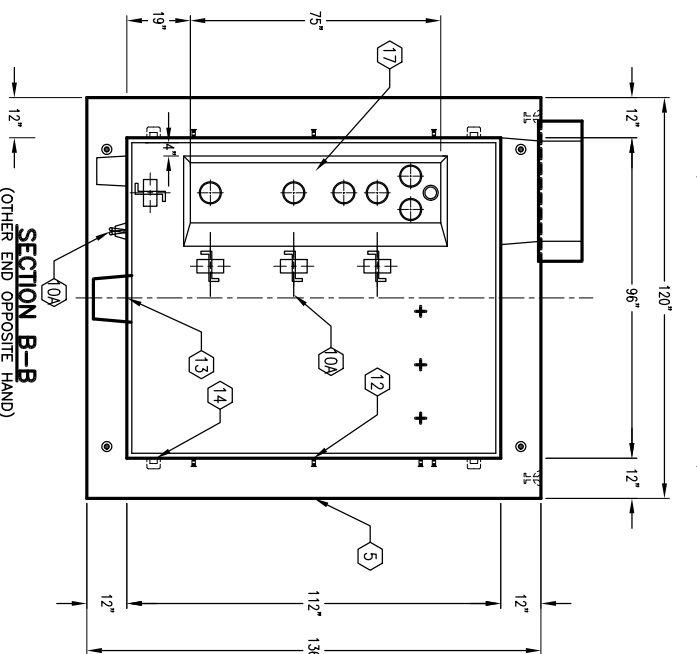
LADDER DETAIL
(KNOCKOUT NOT SHOWN FOR CLARITY)



SECTION C-C

(OPPOSITE SIDE SAME EXCEPT NO PULL IRONS)

1. (2) T894X-R72-12, 72" EXTENSION SECTION, WT. 34,800 lbs. EACH
2. T894X-C96-12, 96" EXTENSION CENTER SECTION, WT. 46,400 lbs.
3. T894X-C96-12, 96" CENTER SECTION, WT. 46,400 lbs.
4. T894X-E36A-12, 36" END SECTION, WT. 34,400 lbs.
5. T894X-E36B-12, 36" END SECTION, WT. 34,400 lbs.
6. (2) 30" DIA. x 12" HIGH GRADE RING.
7. (1) CORE MTD.: EXTENSION CENTER (1) CORE MTD.
8. (2) 1/2" DIA. THROUGH HOLE, LOCATE AS FOLLOWS: CENTER SECTION (6) REQ'D. IN ROOF, EXTENSION CENTER (6) REQ'D. IN ROOF.
- 9A. 6" DIA. CONTERM. LOCATE AS FOLLOWS: END SECTION (6) EACH SURFACE MTD.
- 9B. 3" DIA. CONTERM. LOCATE AS FOLLOWS: END SECTION (1) EACH SURFACE MTD.
10. 1 1/4" DIA. x 8 1/2" GALVANIZED PULL IRON WITH LEGS (10,000 lbs.), LOCATE AS FOLLOWS: EXTENSION CENTER SECTION (2) EA. CORE MTD.; CENTER SECTION (1) CORE MTD.
- 10A. 1 1/4" DIA. x 8 1/2" GALVANIZED PULL IRON WITH LEGS (30,000 lbs.), LOCATE AS FOLLOWS: EXTENSION CENTER SECTION (1) CORE MTD.; CENTER SECTION (1) CORE MTD.
11. 4 TON x 9 1/2" LONG GALV. RISS PINS. LOCATE AS FOLLOWS IN FLOOR: EXTENSION CENTER SECTION (1) CORE MTD.; CENTER SECTION (1) CORE MTD.; EXTENSION SECTION (2) EA. CORE MTD.
12. 1/2" PLASTIC INSERT LOCATE AS FOLLOWS: EXTENSION SECTION (30) EACH CORE MTD.; EXTENSION CENTER SECTION (36) EACH CORE MTD.
13. 12" DIA. x 10" DEEP SLUMP. LOCATE AS FOLLOWS: END SECTION (1) EACH CORE MTD.
14. 950 BOLT-UP CASTING W/RECESS. LOCATE AS FOLLOWS: CENTER SECTION (4) CORE MTD.; EXTENSION SECTION (4) CORE MTD.; END SECTION (4) CORE MTD.
15. 2" DIA. GROUND ROD SLEEVE W/SEALED TERM. END SECTION (2) EACH CORE MTD.
16. 2" DIA. GROUND ROD SLEEVE W/SEALED TERM. END SECTION (2) EACH CORE MTD.
17. LOCATE AS FOLLOWS: END SECTION (1) EACH CORE MTD.; END SECTION (1) EACH CORE MTD.
18. A-3885 ALHAMBRA FOUNDRY LADDER, 16" WIDE x 11'-0" LONG, FLOOR AND WALL MTD.



SECTION B-B
(OTHER END OPPOSITE HAND)

K894X-TV34-12
 PER LADWP SPEC. H-240
 03-01-02



AutoCAD Rel. 14
 K894X-TV34-12

#	DATE	DESCRIPTION	BY