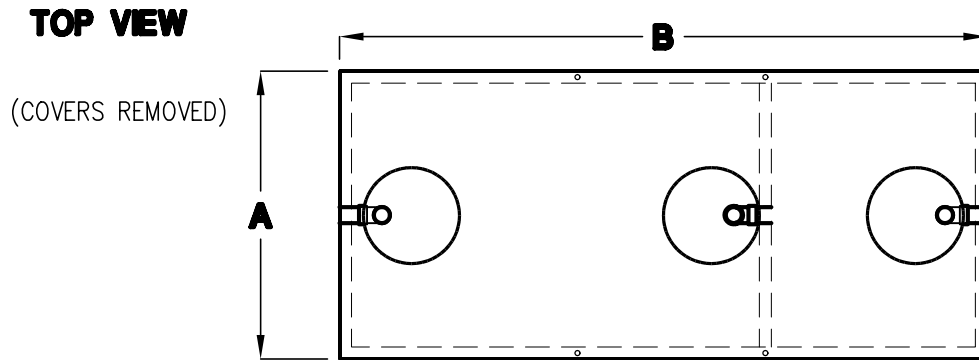
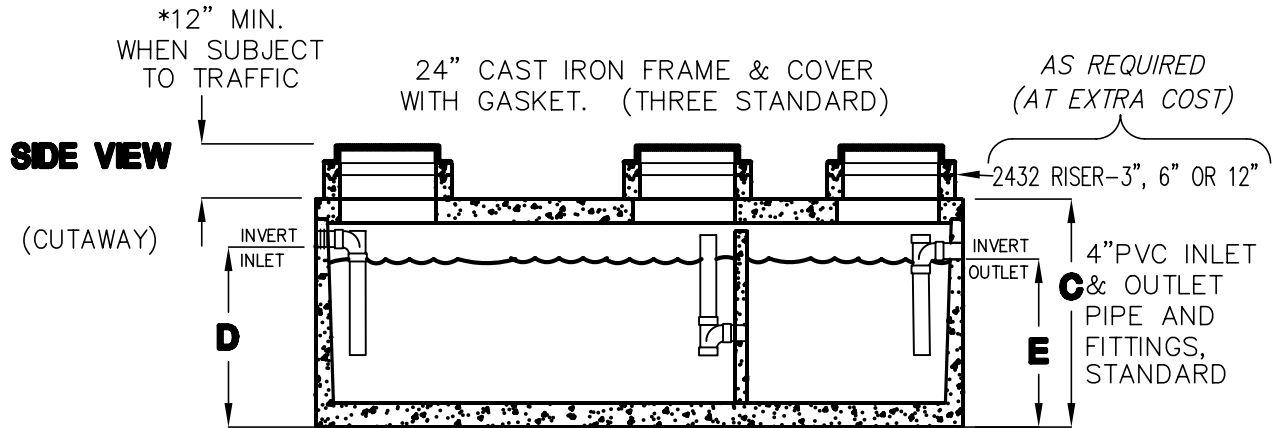


# SPECIAL 2000-3000 GALLON GREASE INTERCEPTORS

TRAFFIC RATED ACCEPTED BY UPC<sub>®</sub>



MODEL NUMBER	LIQUID CAPACITY GALLONS	WIDTH 'A'	OVERALL LENGTH 'B'	TANK HEIGHT 'C'	INLET 'D'	OUTLET 'E'	MINIMUM EXCAVATION WIDTH	MINIMUM EXCAVATION LENGTH	*DEPTH OF BURY	MAX. LIFT WEIGHT
HJ2000G	2000	8'-0"	15'-0"	5'-4"	3'-9"	3'-6"	9'-0"	16'-0"	6' MAX.	26,600
HJ2500G	2500	8'-0"	19'-0"	5'-4"	3'-9"	3'-6"	9'-0"	20'-0"	6' MAX.	32,200
HJ3000G	3000	9'-1"	17'-1"	5'-6"	4'-1"	3'-10"	10'-1"	18'-1"	6' MAX.	34,100

- TANK DESIGNED FOR H-20 TRAFFIC WHEEL LOAD WITH 1' TO 6' MAX. EARTH COVER AND WATER TABLE AT ONE FOOT BELOW GRADE.
- SUITABLE NATIVE OR SUB-BASE SHALL BE PREPARED TO HANDLE ANTICIPATED LOADS. THE EXCAVATION SHALL BE BEDDED WITH SUITABLE GRANULAR MATERIAL AND SHALL BE COMPACTED TO 90% MAXIMUM DRY DENSITY, OR TO REQUIREMENTS OF THE PROJECT GEOTECHNICAL ENGINEER.
- FOR COMPLETE DESIGN AND PRODUCT INFORMATION CONTACT JENSEN PRECAST.

THE DESIGN AND DETAIL OF THIS DRAWING ARE THE PROPERTY OF JENSEN PRECAST AND NOT TO BE USED EXCEPT IN CONNECTION WITH ITS OWN WORK. DESIGN AND INVENTION RIGHTS ARE RESERVED.