

4'-0" x 5'-0" SCG PARKWAY HANDHOLE (76-9424) x 3'-8 3/4" DEEP

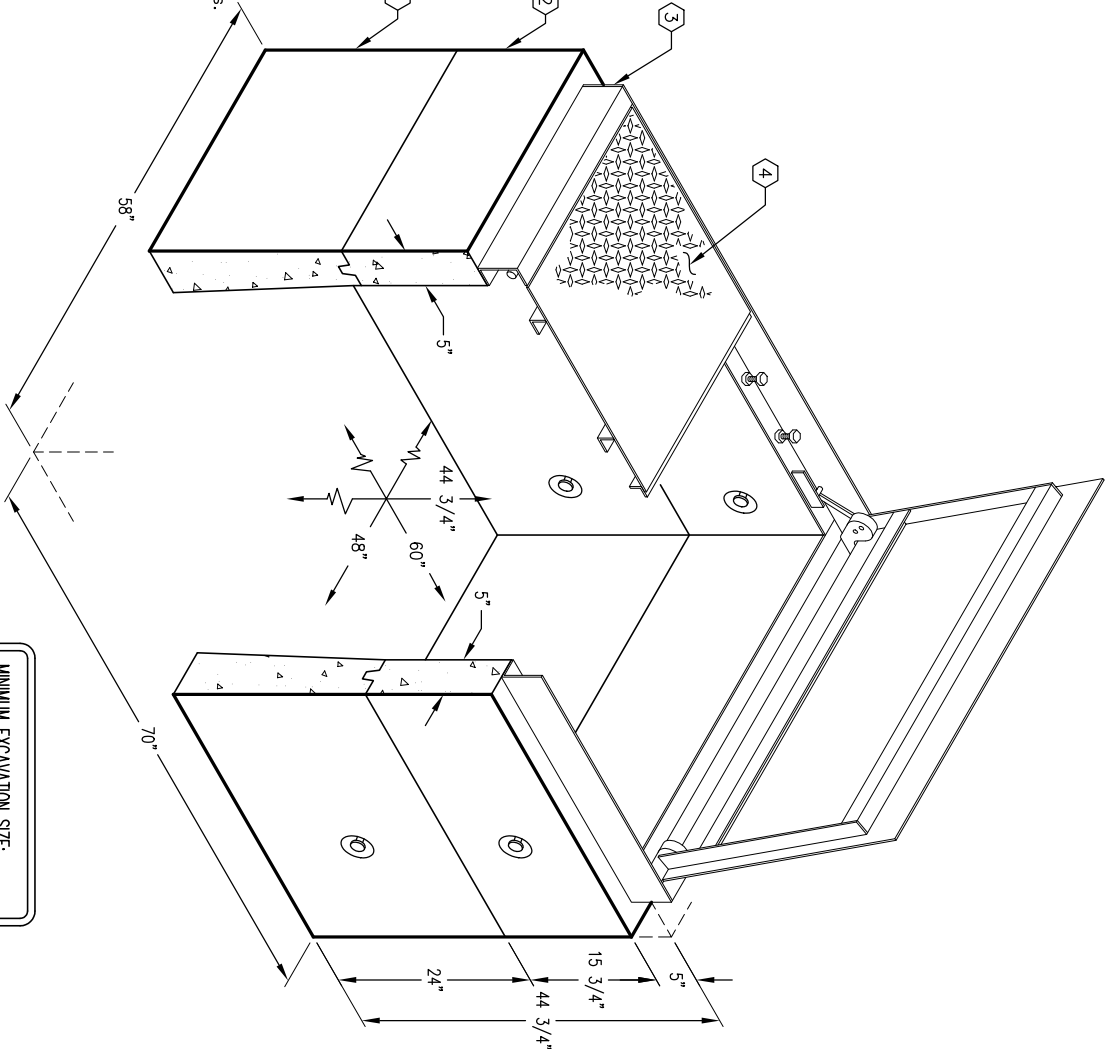
NOTES:

- HANDHOLE DESIGNED IN ACCORDANCE WITH AASHTO H-20-44 TRAFFIC BRIDGE LOADING USING 5,500 PSI [37.92MPa] COMPRESSIVE STRENGTH CONCRETE AND 60,000 PSI [413.2MPa] YIELD STRENGTH ASTM A-706 STEEL REINFORCEMENT PER CALCS. #31168.
 - COVER DESIGNED FOR PARKWAY LOADING PER CALCS. #31177.
 - HANDHOLE TO BE PLACED ON A MIN. 6" BASE OF CRUSHER RUN FOR EASE OF INSTALLATION AND EVEN LOAD DISTRIBUTION.
- ORDERING INFORMATION:**
- K45-FH45-159424 FOR ASSEMBLY AS SHOWN.
 APPROVED FOR SO. CALIF. GAS PER I.D. #76-9424.
 TOTAL WEIGHT OF ASSEMBLY SHOWN IS 4,880 Lbs.

1. PB45F-L24-15, 24" LOWER SECTION. WT. 1,967 Lbs.
2. PB45-T15-15, 15 3/4" TOP SECTION. WT. 1,668 Lbs.
3. 5" PARKWAY ADJUSTABLE GALV. FRAME (F45-PB-GAS). WT. 200 Lbs.
4. C45-PGSRSA, TWO PIECE GALV. S/A PARKWAY COVER (SC45-PGRGV-15) W/ GUARD BARS, SPECIAL CAM LOCKS, (2) LIFT HANDLES, AND (1) 1/2" ALLEN BUTTON HEAD CAP SCREW. WT. 376 Lbs.
5. 1/2" x 5" ADJUSTING BOLT. LOCATE AS FOLLOWS: LOWER SECTION (4) PALLET MTD.
6. @ 1/2" P-35-T INSERTS. LOCATE AS FOLLOWS: LOWER SECTION (2) CORE MTD.; TOP SECTION (4) PALLET MTD. (2) CORE MTD.

GENERAL NOTES:

1. Minimum soil bearing capacity is hereby assumed to be 2000 PSF unless otherwise documented by a geotechnical report that shall be provided to Jensen Precast by the end user. Jensen Precast shall not be held responsible for the soil bearing capacity.
2. Installation of Manholes, Vaults, Handholes, Meter Boxes etc. will be as per Jensen Installation procedures.
3. Structural modification to the Jensen line of products is not permitted without prior written approval from Jensen Engineering Department.
4. Do not scale the drawings, verify all dimensions including rough openings, if any discrepancies are found, notify the Jensen Engineer immediately.
5. The Jensen Engineer will interpret the intent of the drawings in case of possible conflict or discrepancy.
6. Permissible Variations:
 Dimensional Tolerances – The length, width, height, or dia. measurements of the structure when measured on the inside surfaces shall not deviate from design dimensions by more than the following:
 Dimensions: Tolerance:
 0 to 5 Feet 1/4"
 5 to 10 Feet 3/8"
 10 to 20 Feet as agreed upon between the supplier and purchaser.
 Squariness Tolerance:
 The inside of the precast concrete component shall be square as determined by diagonal measurements. The difference between such measurements shall not exceed the following:
 Measured Length: Allowable Difference
 0 to 10 Feet 1/2"
 10 to 20 Feet 3/4"
 20 Feet and over as agreed upon between the supplier and purchaser.
- 7.



MINIMUM EXCAVATION SIZE:
 5'-10" x 6'-10" x DEPTH RECD.

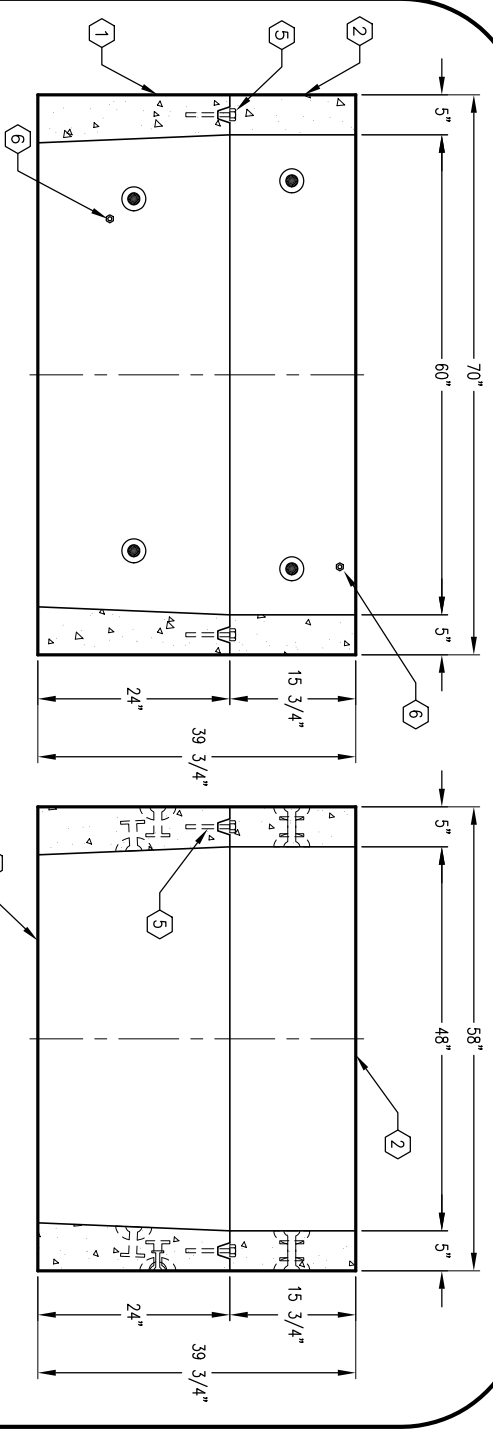


AUTOCAD REL. 14

K45-FH45-159424

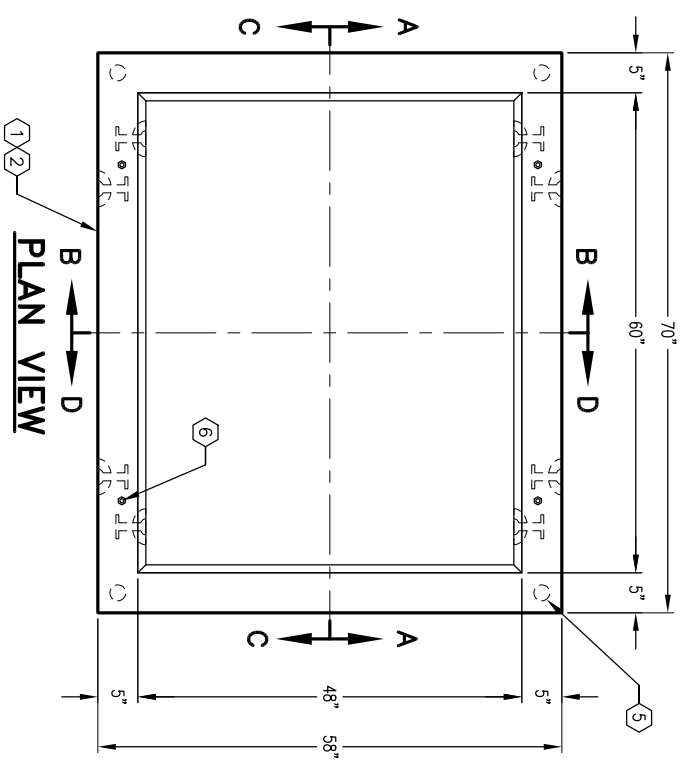
PER SO. CALIF. GAS CO. SPEC. 76-9424

03-01-02

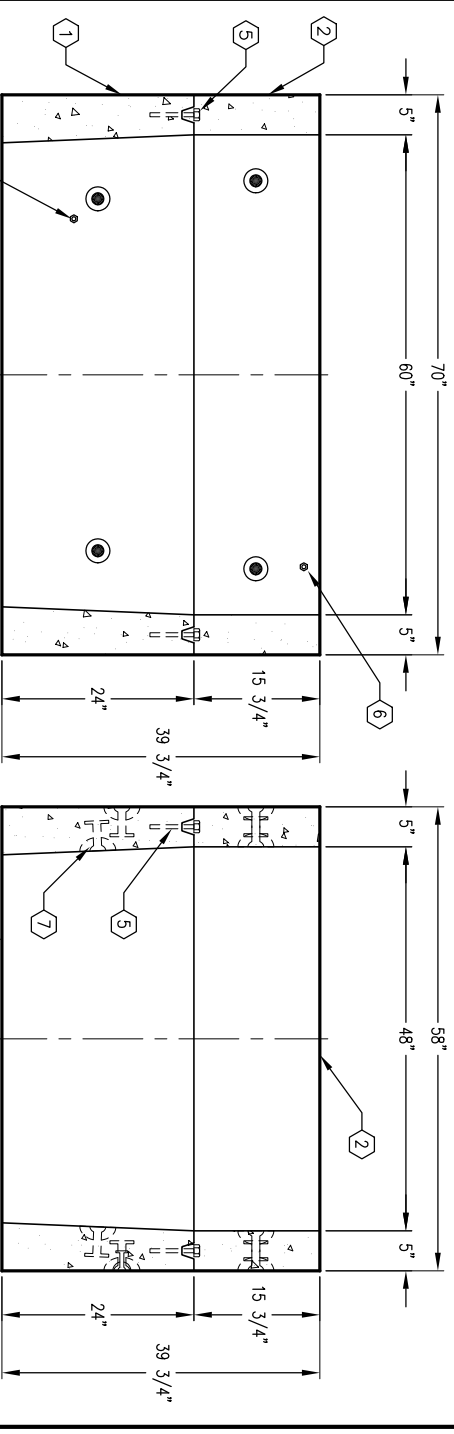


SECTION A-A

SECTION B-B



PLAN VIEW



SECTION C-C

SECTION D-D



K45-FH45-159424

PER SO. CALIF. GAS CO. SPEC. 76-9424

03-01-02

#	DATE	DESCRIPTION	BY