

7'-0" x 8'-0" EDISON EQUIPMENT PAD W/4'-0" x 7'-0" ENCLOSURE x 60" DEEP

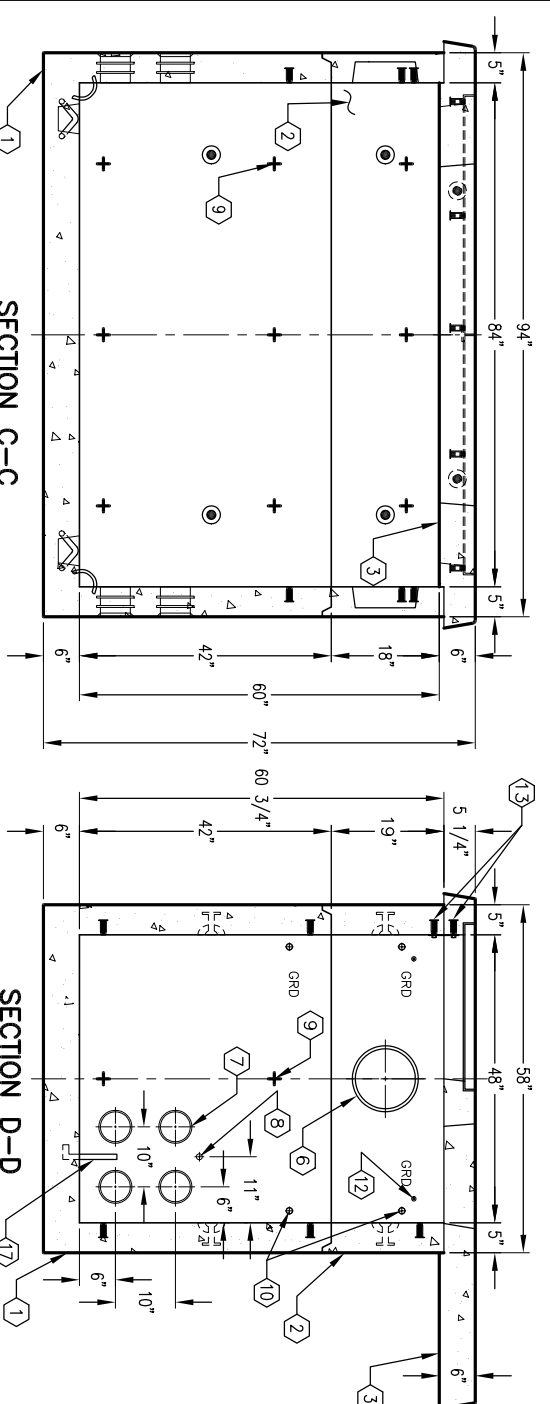
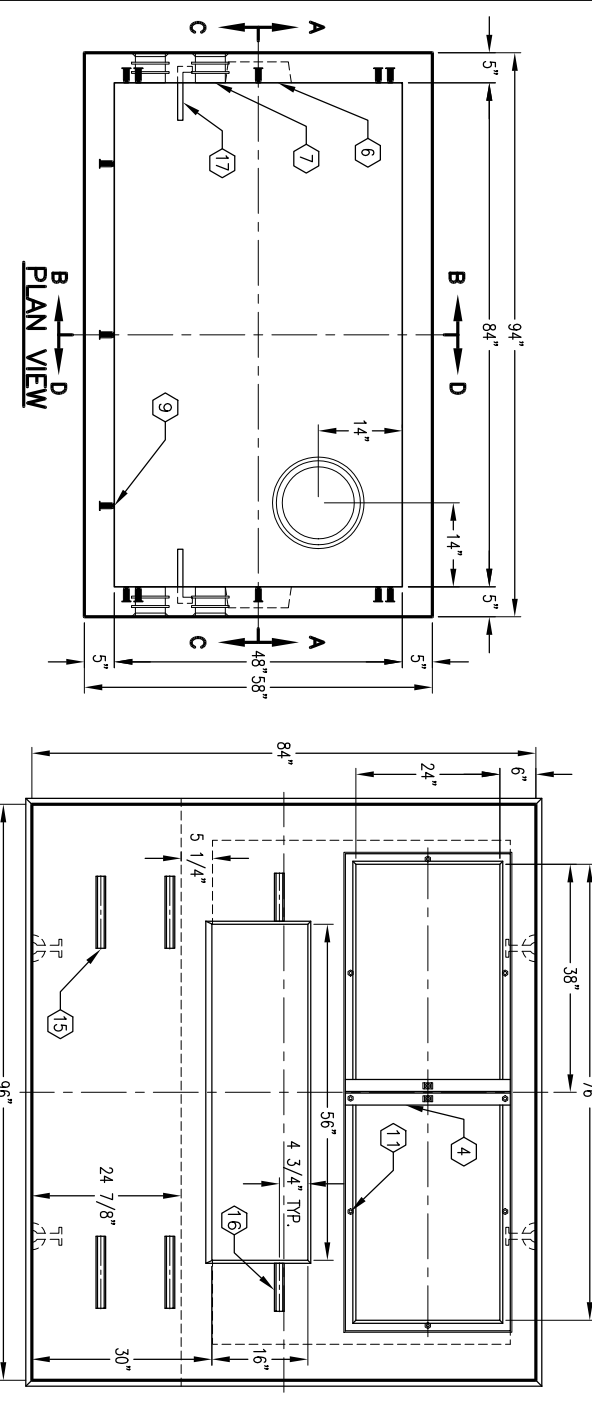
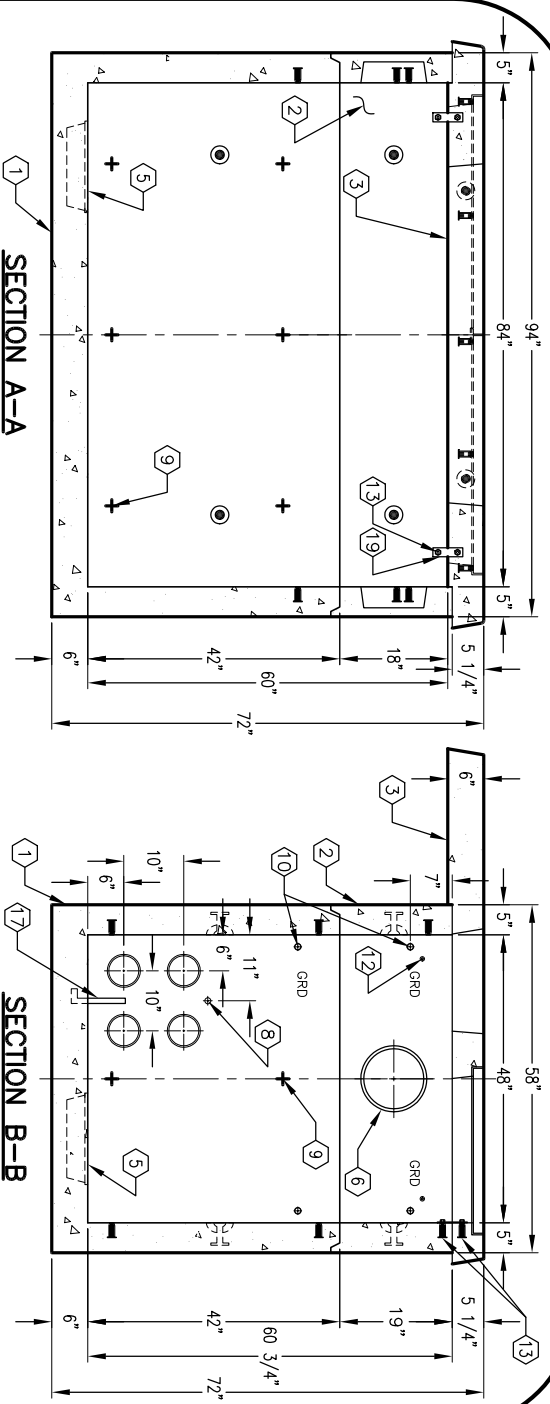
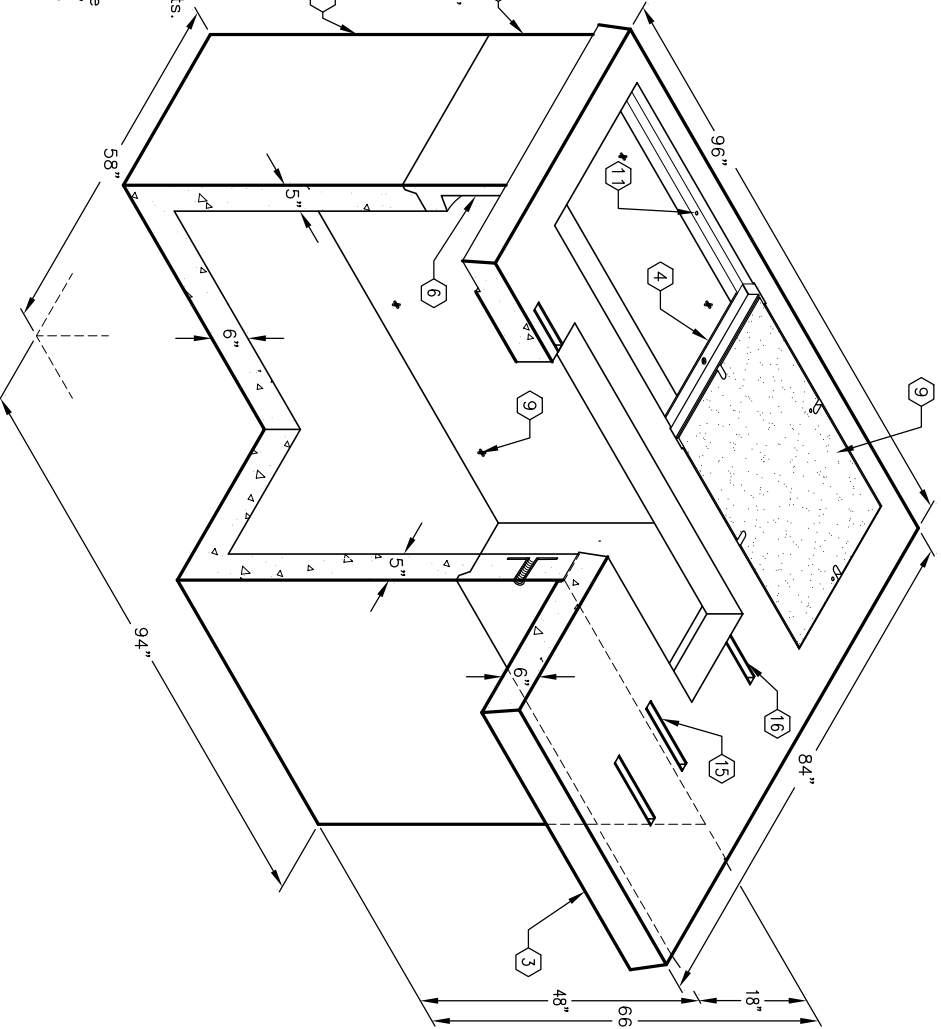
NOTES:

- VAULT DESIGNED IN ACCORDANCE WITH AASHTO H-20-44 TRAFFIC BRIDGE LOADING USING 5,500 PSI [37.92MPa] COMPRESSIVE STRENGTH CONCRETE AND 60,000 PSI [413.2MPa] YIELD STRENGTH ASTM A-706 STEEL REINFORCEMENT PER CALCS. #31657.
 - VAULT TO BE PLACED ON A MIN. 6" BASE OF CRUSHER RUN FOR EASE OF INSTALLATION AND EVEN LOAD DISTRIBUTION.
 - CONCRETE MIX USED IN POURING THIS PRODUCT SHALL USE FLY ASH AS AN ADMIXTURE.
 - WALLS SHALL BE PAINTED WHITE.
- ORDERING INFORMATION:**
- K78-SB60-11 FOR ASSEMBLY AS SHOWN.
 PER EDISON SPEC. UGS 537.1, .2 & .3.
 TOTAL WEIGHT OF ASSEMBLY AS SHOWN IS 12,678 Lbs.

1. SE47-B42-11, 42" BOTTOM SECTION, WT. 7,553 Lbs.
2. SB47-R19-11, 19" EXTENSION SECTION, WT. 2,342 Lbs.
3. PD8496-T6-11, 6" EQUIPMENT PAD, W/F2476-PD-BD GALV. ANGLE FRAME CAST-IN, WT. 2,783 Lbs.
4. SB847-140, BEAM FOR PD8496 SERIES TRANSFORMER PAD, 13" x 14" DIA. SUMP x 3" DEEP, W/15" x 1/4" SUMP COVER RECESS, BOTTOM SECTION (1) CORE MTD.
5. 10" DIA. PLASTIC VENT TERMINATOR, EXTENSION SECTION (2) CORE MTD.
6. 5" DIA. TERMINATORS, BOTTOM SECTION (8) SHELL MTD.
7. 1" PVC PIPE SCH 40 CAP, BOTTOM SECTION (2) SHELL MTD.
8. 1/2" PLASTIC INSERT, BOTTOM SECTION (16) CORE MTD. EXTENSION SECTION (3) CORE MTD.
9. 1/2" P-36T THREADED INSERT, EXTENSION SECTION (4) CORE MTD.
10. 1/2" P-35T OB INSERT, TRANS. PAD (8) FRAME MTD.
11. 1/2" THREADED BRONZE INSERT, "GRD" TO BE STENCILED WITH RED 1 1/2" HIGH LETTERS ADJACENT TO GROUND INSERT, BOTTOM SECTION (4) CORE MTD.; EXTENSION SECTION (4) CORE MTD.
12. 3/8" P-25T INSERT, EXTENSION SECTION (2) CORE MTD.; TRANS. PAD (2) CORE MTD.
13. 1 5/8" x 1 5/8" GALV. UNISTRUT x 12", TRANS. PAD (4) TABLE MTD.
14. 1 5/8" x 1 5/8" GALV. UNISTRUT x 8", TRANS. PAD (2) TABLE MTD.
15. 7/8" DIA. x 4 1/2" GALV. PULL IRON W/LEGS, BOTTOM SECTION (2) CORE MTD.
16. 1 1/2" x 1 1/2" FLAT BAR x 5" LONG.
17. 24" x 36" RPM COVER, EDISON, (2) REQ'D.
18. W/ 1/2" x 2 1/2" S.S. BOLTS W/CAPTIVE WASHER. (8) REQ'D.

GENERAL NOTES:

1. Minimum soil bearing capacity is hereby assumed to be 2000 PSF unless otherwise documented by a geotechnical report that shall be provided to Jensen Precast by the end user. Jensen Precast shall not be held responsible for the soil bearing capacity. Installation of Manholes, Vaults, Handholes, Meter Boxes etc. will be as per Jensen installation procedures.
2. Structural modification to the Jensen line of products is not permitted without prior written approval from Jensen Engineering Department.
3. Do not scale the drawings, verify all dimensions including rough openings, if any discrepancies are found, notify the Jensen Engineer immediately.
4. The Jensen Engineer will interpret the intent of the drawings in case of possible conflict or discrepancy.
5. Permissible Variations: - The length, width, height, or dia. measurements of the structure when measured on the inside surfaces shall not deviate from design dimensions by more than the following:
 Dimensions: Tolerance:
 0 to 5 Feet 1/4"
 5 to 10 Feet 3/8"
 10 to 20 Feet as agreed upon between the supplier and purchaser.
6. Squariness Tolerance: - The inside of the precast concrete component shall be square as determined by diagonal measurements. The difference between such measurements shall not exceed the following:
 Measured Length: Allowable Difference
 0 to 10 Feet 1/2"
 10 to 20 Feet 3/4"
 20 Feet and over as agreed upon between the supplier and purchaser.
- 7.



#	DATE	DESCRIPTION	BY

K78-SB60-11
 PER EDISON SPEC. UGS 537
 03-01-02



K78-SB60-11
 PER EDISON SPEC. UGS 537
 03-01-02