

# 2'-0" x 3'-0" EDISON DUCTED PULL BOX x 3'-0" DEEP

**NOTES:**

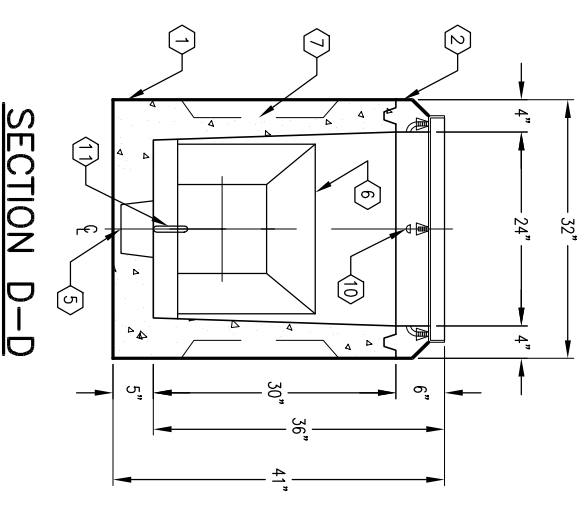
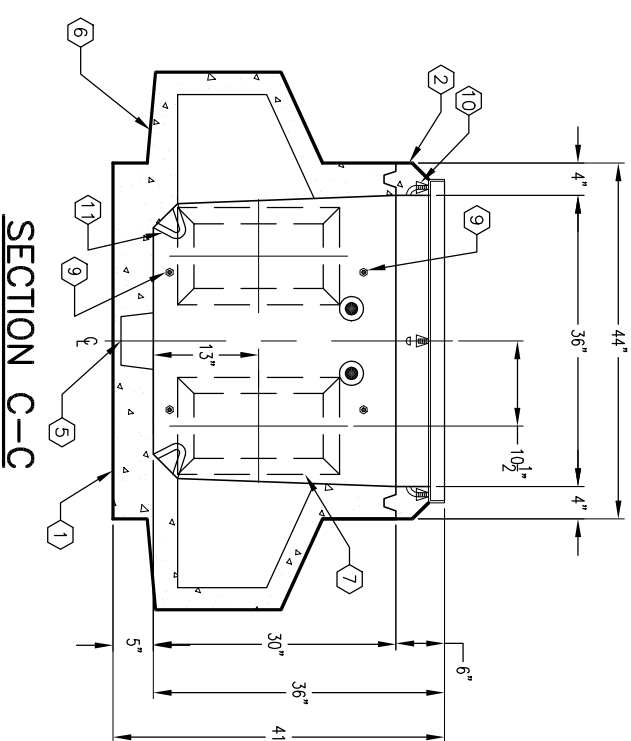
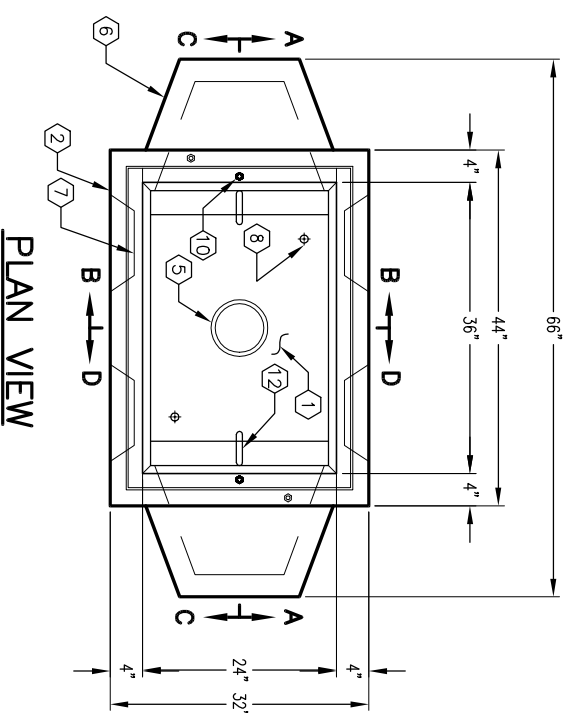
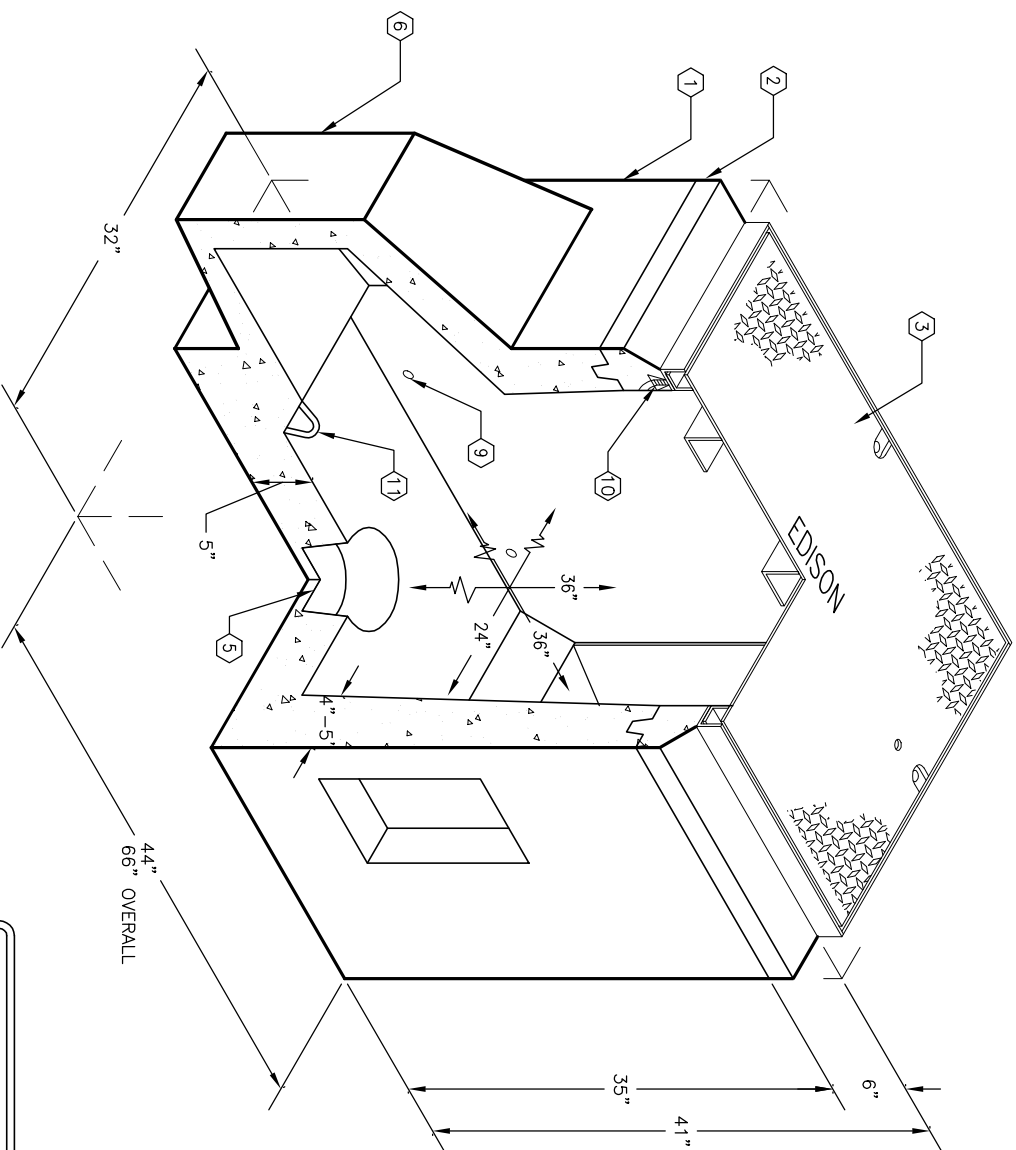
- PULL BOX DESIGNED IN ACCORDANCE WITH AASHTO H-20-44 TRAFFIC BRIDGE LOADING USING 5,500 PSI COMPRESSIVE STRENGTH CONCRETE AND 60,000 PSI YIELD STRENGTH ASTM A-706 STEEL REINFORCEMENT.
- STEEL COVER DESIGNED FOR H-20-44 TRAFFIC LOADING.
- RPM COVER DESIGNED FOR PARKWAY LOADING.
- PULL BOX TO BE PLACED ON A MIN. 6" BASE OF CRUSHER RUN FOR EASE OF INSTALLATION AND END LOAD DISTRIBUTION.

**ORDERING INFORMATION:**

PER EDISON SPEC. UGS 215.1 PB-2  
TOTAL WEIGHT OF ASSEMBLY SHOWN IS 2,150 lbs.

**PARKWAY ASSEMBLY WITH RPM COVER K2436-DP36-11P.**  
**LIGHT TRAFFIC ASSEMBLY WITH STEEL COVER K2436-DP36-11T.**

1. PB2436D-B30-05, 30" BOTTOM SECTION, WT. 1,822 lbs.
2. PB2436-16E, 6" TOP SECTION, W/F2436-PB-ANG GALV. FRAME CAST IN. WT. 185 lbs.
- 3A. SC2436-TGV, ONE PIECE TRAFFIC COVER, GALVANIZED FINISH, MARKED "EDISON", WT. 134 lbs. (AS SHOWN).
- B. 12-20-10, ONE PIECE RPM COVER, MARKED "EDISON" (NOT SHOWN).
5. 6" x 7" DIA. SUMP x 4" DEEP, BOTTOM SECTION.
6. 11" x 11" DUCTED K.O. x 3" DEEP, BOTTOM SECTION.
7. 8" x 16" K.O. x 3" DEEP, BOTTOM SECTION.
8. 1" DIA. BLIND GROUND ROD HOLE, BOTTOM SECTION.
9. 1/2" P-35-T INSERT, BOTTOM SECTION.
10. 1/2" P-35-T INSERT W/CLEAN-OUT HOLE, TOP SECTION.
11. 7/8" DIA. X 9" VERTICAL GALV. PULL IRON, BOTTOM SECTION.



#	DATE	DESCRIPTION	BY

MINIMUM EXCAVATION SIZE:  
3'-8" x 6'-6" x DEPTH REQD.

#	DATE	DESCRIPTION	BY