

8'-0" x 20'-0" SDG&E TRANSMISSION VAULT x 9'-4" DEEP

NOTES:

- VAULT DESIGNED IN ACCORDANCE WITH ACI 318, ASTM C857 AND AASHTO HS 20-44 TRAFFIC BRIDGE LOADING USING 5,500 P.S.I. COMPRESSIVE STRENGTH AT 28 DAYS CONCRETE AND 60,000 P.S.I. STRENGTH ASTM A-706 STEEL REINFORCEMENT PER CALCS. 31900.
- VAULT TO BE PLACED ON A MIN. 6" BASE OF CRUSHER RUN FOR EASE OF INSTALLATION AND EVEN LOAD DISTRIBUTION.
- INSTALLATION LIMITS OF THE TOP SECTION IS 1'-6" MIN. TO 4'-0" MAX. EARTH COVER.
- PAINT ALL WALLS AND CEILING WITH ONE COAT OF WHITE LATEX FLAT PAINT.

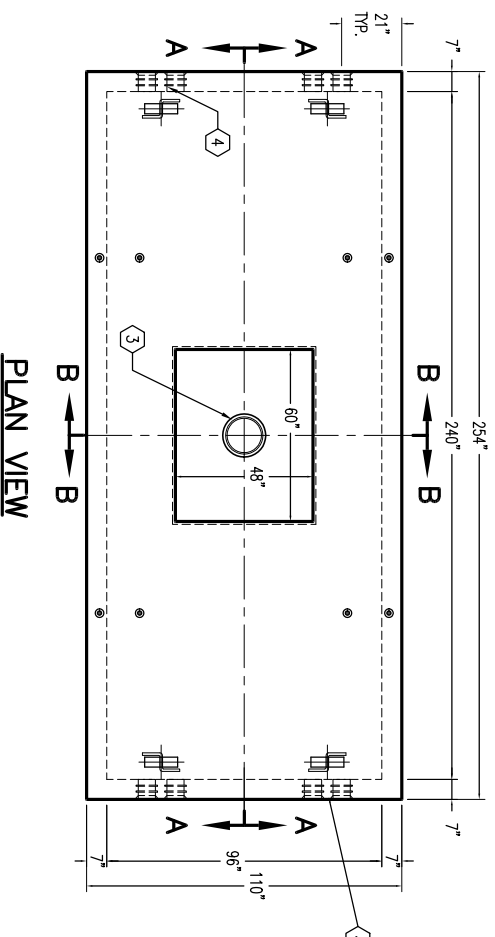
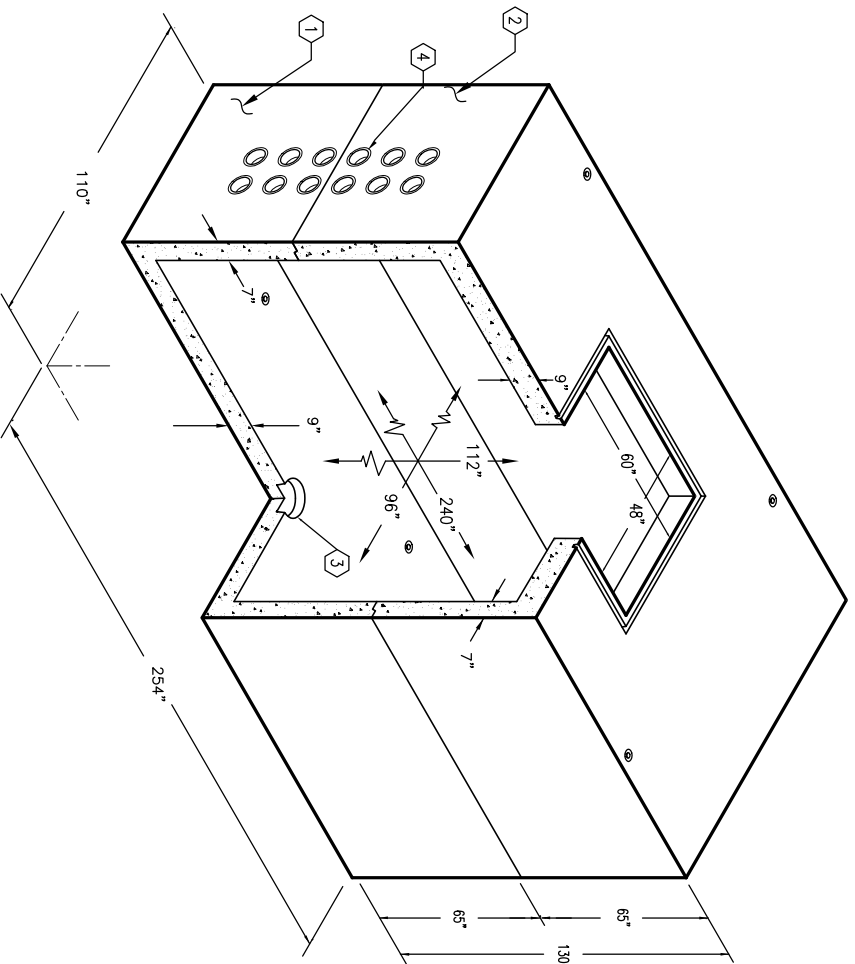
ORDERING INFORMATION:

K820-TV112-10 FOR ASSEMBLY AS SHOWN.
 PER SAN DIEGO GAS & ELECTRIC SPECS.
 TOTAL WEIGHT OF ASSEMBLY AS SHOWN IS 90,227 lbs.

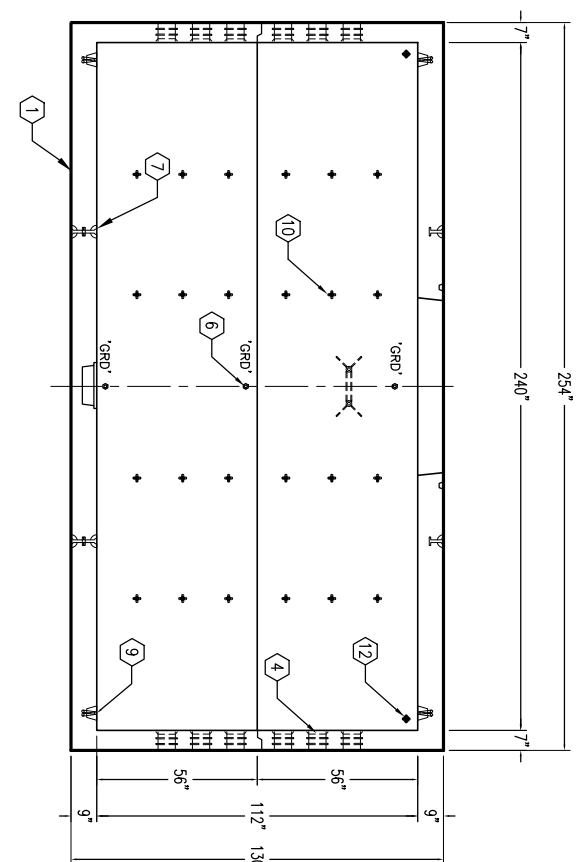
GENERAL NOTES:

1. Minimum soil bearing capacity is hereby assumed to be 2000 PSF unless otherwise documented by a geotechnical report that shall be provided to Jensen Precast by the end user. Jensen Precast shall not be held responsible for the soil bearing capacity.
2. Installation of Manholes, Vaults, Handholes, Meter Boxes etc. will be as per Jensen installation procedures.
3. Structural modification to the Jensen line of products is not permitted without prior written approval from Jensen Engineering Department.
4. Do not scale the drawings, verify all dimensions including rough openings, if any discrepancies are found, notify the Jensen Engineer immediately.
5. The Jensen Engineer will interpret the intent of the drawings in case of possible conflict or discrepancy.
6. Dimensional Tolerances – The length, width, height, or dia. measurements of the structure when measured on the inside surfaces shall not deviate from design dimensions by more than the following:
 - Dimensions: Tolerance:
 - 0 to 5 Feet 1/4"
 - 5 to 10 Feet 3/8"
 - 10 to 20 Feet as agreed upon between the supplier and purchaser.
7. Squariness Tolerance:
 - The inside of the precast concrete component shall be square as determined by diagonal measurements. The difference between such measurements shall not exceed the following:
 - Measured Length: Allowable Difference
 - 0 to 10 Feet 1/2"
 - 10 to 20 Feet 3/4"
 - 20 Feet and over as agreed upon between the supplier and purchaser.

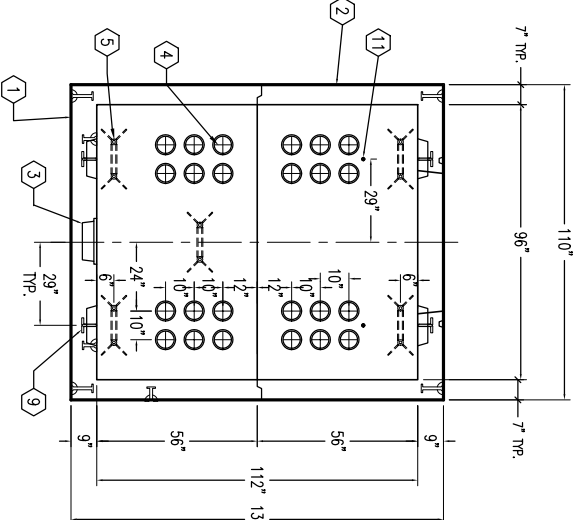
1. UV820-B56-10T, 56" BOTTOM SECTION, WT. 45,648 lbs.
2. UV820-T56-10T, 56" TOP SECTION, WT. 44,579 lbs.
3. 13" X 14" DIA. SUMP X 5" DEEP W/RECESS FOR SUMP COVER.
4. 6" DIA. TERMINATORS BOTTOM SECTION (24) CORE MTD. TOP SECTION (24) CORE MTD.
5. 1" DIA. DOUBLE GALV. COIL INSERT. TOP SECTION (4) CORE MTD. BOTTOM SECTION (6) CORE MTD.
6. 1/2" THREADED BRONZE INSERT WELDED TO STRUCTURAL REBAR CAGE. TOP SECTION (2) CORE MTD.; BOTTOM SECTION (4) CORE MTD.
9. 7/8" DIA. x 4 1/2" GALV. RECESSED PULL IRONS, W/LEGS. TOP SECTION (4) CORE MTD.; BOTTOM SECTION (4) CORE MTD.
10. 1/2" DIA. PLASTIC INSERTS. LOCATE AS FOLLOWS: TOP SECTION (12) CORE MTD. BOTTOM SECTION (12) CORE MTD.; BOTTOM SECTION (4) CORE MTD.
11. 1" DIA. SCH. 40 PVC. W/ CAPS EACH END (4) – PLACES.
12. 1/2" "KOHLER" STEEL INSERTS W/ J-BOLTS. (4) – PLACES.



PLAN VIEW



SECTION A-A



SECTION B-B

JENSEN
PRECAST

AUTOCAD REL. 14

K820-TV112-10

PER SAN DIEGO GAS & ELECTRIC SPEC. (34003-01 SDC&E DWG.) 03-01-02

JENSEN
PRECAST

#	DATE	DESCRIPTION	BY

K820-TV112-10

PER SAN DIEGO GAS & ELECTRIC SPEC. (34003-01 SDC&E DWG.) 03-01-02