

4'-0" x 5'-0" LADWP TRAFFIC SERVICE VAULT x 42" DEEP

NOTES:

- CONCRETE DESIGNED IN ACCORDANCE WITH AASHTO H-20-44 TRAFFIC LOADING USING 5,500 PSI [37.92MPa] COMPRESSIVE STRENGTH CONCRETE AND 60,000 PSI [413.2MPa] YIELD STRENGTH GRADE 60 A-706 STEEL REINFORCEMENT PER CALCS. #30187.
- COVER MANUFACTURED IN ACCORDANCE WITH THE CITY OF LOS ANGELES DEPARTMENT OF WATER AND POWER DRAWING #C5072-2. COVER DESIGNED PER CALCS. #31613
- VAULT TO BE PLACED ON A 6" BASE OF CRUSHER RUN FOR EASE OF INSTALLATION AND EVEN LOAD DISTRIBUTION.
- DESIGNED AND MANUFACTURED IN ACCORDANCE WITH THE CITY OF LOS ANGELES DEPARTMENT OF WATER AND POWER DRAWING #C5189-R4.
- CONCRETE MIX USED IN THIS PRODUCT SHALL USE FLY-ASH AS AN ADMIXTURE.
- EACH CONCRETE SECTION SHALL BE MARKED ON THE INSIDE & OUTSIDE WITH "JENSEN PRECAST" THE DESIGNATION "DWP/FA.", AND THE DATE OF POUR.
- EACH CONCRETE SECTION SHALL HAVE CAST-IN ON THE INSIDE "JENSEN," THE YEAR, AND THE DESIGNATION "FA."

THE FOLLOWING MATERIAL TO BE SHIPPED WITH EACH VAULT:
 (a) 7/8" x 1 3/4" CONSUAL GASKET (45" FT. REQ'D.)

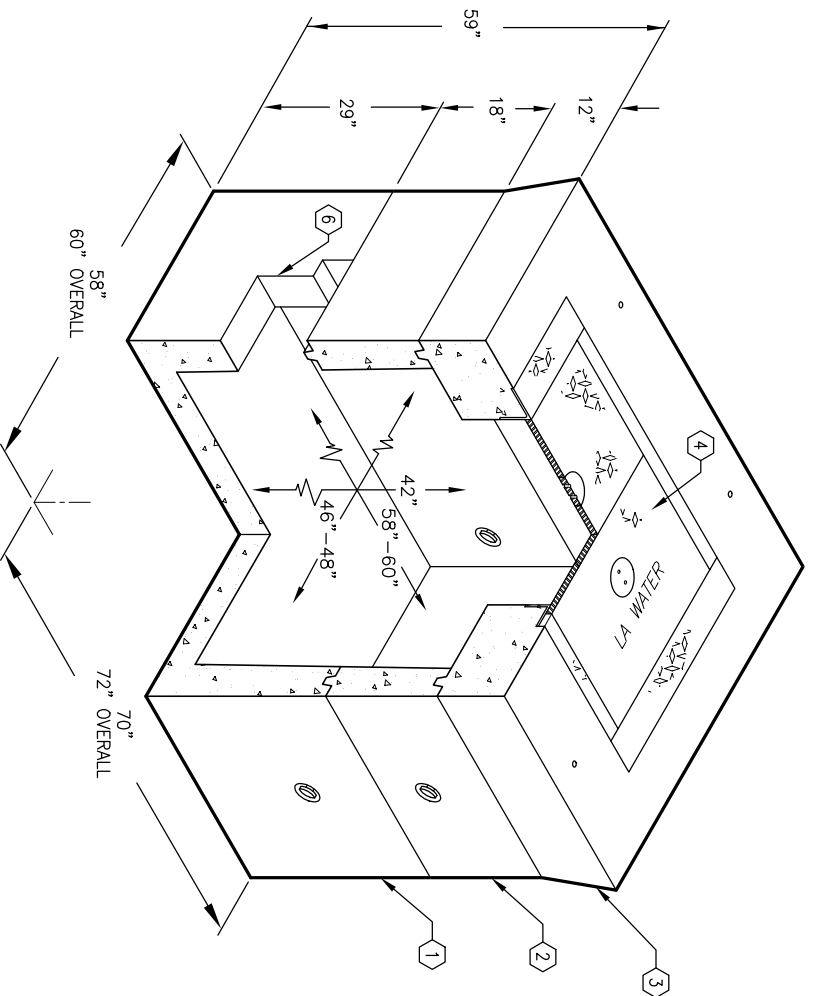
GENERAL NOTES:

1. Minimum soil bearing capacity is hereby assumed to be 2000 PSF unless otherwise documented by a geotechnical report that shall be provided to Jensen Precast by the end user. Jensen Precast shall not be held responsible for the soil bearing capacity.
2. Installation of Manholes, Vaults, Handholes, Meter Boxes etc. will be as per Jensen installation procedures.
3. Structural modification to the Jensen line of products is not permitted without prior written approval from Jensen Engineering Department.
4. Do not scale the drawings, verify all dimensions including rough openings, if any discrepancies are found, notify the Jensen Engineer immediately.
5. The Jensen Engineer will interpret the intent of the drawings in case of possible conflict or discrepancy.
6. Permissible Variations:
 Dimensional Tolerances – The length, width, height, or dia. measurements of the structure when measured on the inside surfaces shall not deviate from design dimensions by more than the following:
 Dimensions: Tolerance:
 0 to 5 Feet 1/4"
 5 to 10 Feet 3/8"
 10 to 20 Feet as agreed upon between the supplier and purchaser.
 Squariness Tolerance:
 The inside of the precast concrete component shall be square as determined by diagonal measurements. The difference between such measurements shall not exceed the following:
 Measured Length: Allowable Difference
 0 to 10 Feet 1/2"
 10 to 20 Feet 3/4"
 20 Feet and over as agreed upon between the supplier and purchaser.
- 7.

1. PB45F-B24-12, 24" BOTTOM SECTION, WT. 4,547 Lbs.
2. PB45-R18-12, 18" EXTENSION SECTION, WT. 1,886 Lbs.
3. PB45-T12-123, 12" THICK TOP SLAB, WT. 3,216 Lbs.
4. L.A. #3, TWO PIECE TRAFFIC HINGED COVER W/ (2) 6 3/8" DIA. READING LIDS & RED PRIMER FINISH, MARKED WITH THE WORDS "LA WATER" CAST INTO TOP SLAB, WT. 669 Lbs.
5. 14" x 16" DIAMETER SUMP x 5" DEEP. LOCATE AS FOLLOWS: BOTTOM SECTION (1) CORE MTD.
6. THRU SLOT. LOCATE AS FOLLOWS: BOTTOM SECTION (2) CORE MTD.
7. 3/4" x 2 1/2" COIL THREAD GALVANIZED INSERT W/ NUT x 4" WIDE. LOCATE AS FOLLOWS: TOP SLAB (4) SURFACE MTD., (4) PALLET MTD.

ORDERING INFORMATION:

K45-FH42-12 FOR ASSEMBLY AS SHOWN.
 PER LADWP SPEC. C-5189, R4.
 TOTAL WEIGHT OF ASSEMBLY IS 10,318 Lbs.



MINIMUM EXCAVATION SIZE:
 5'-10" x 7'-0" x DEPTH REQ'D.

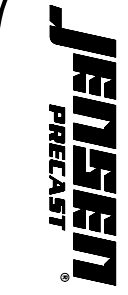
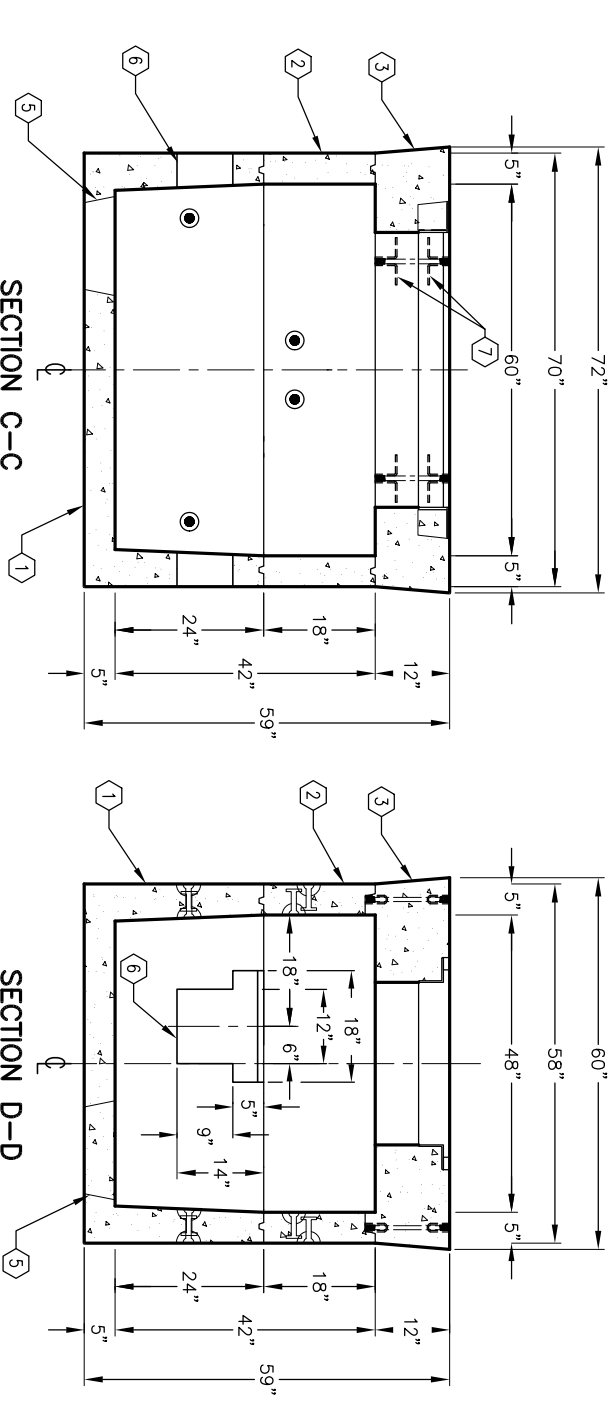
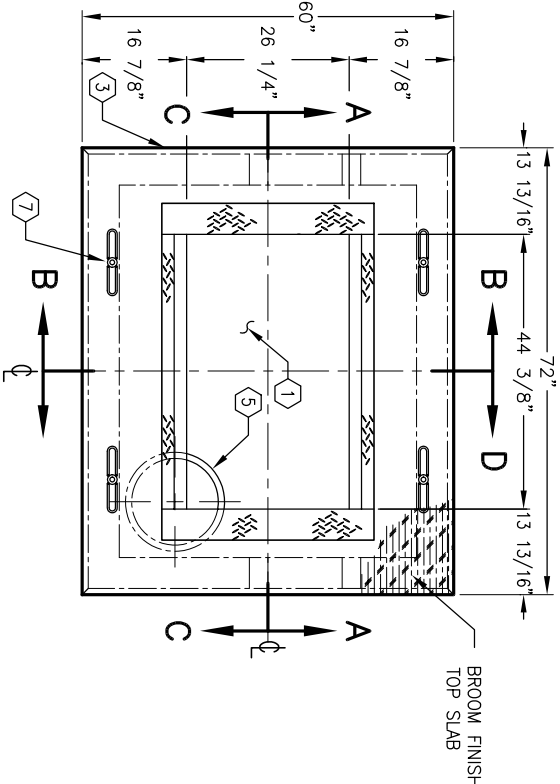
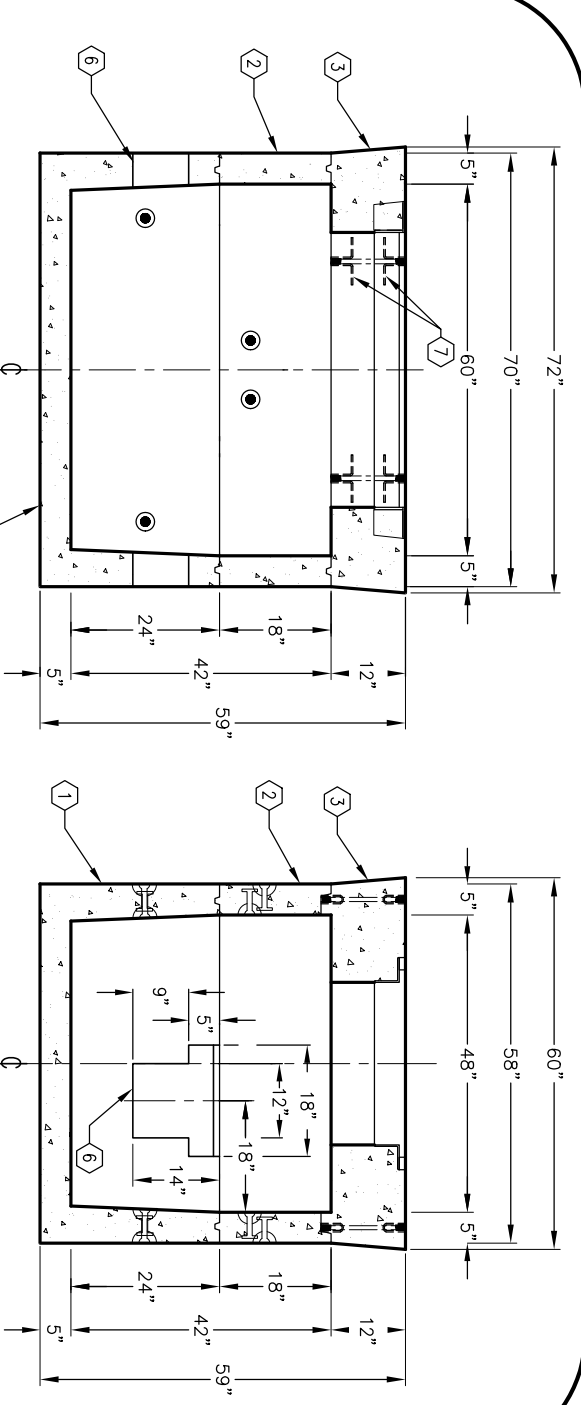
K45-FH42-12



AUTODWG. REL. 14

PER LADWP SPEC. C-5189, R4

03-01-02



PRINT DATE: 05/21/98

#	DATE	DESCRIPTION	BY

K45-FH42-12

PER LADWP SPEC. C-5189, R4

03-01-02