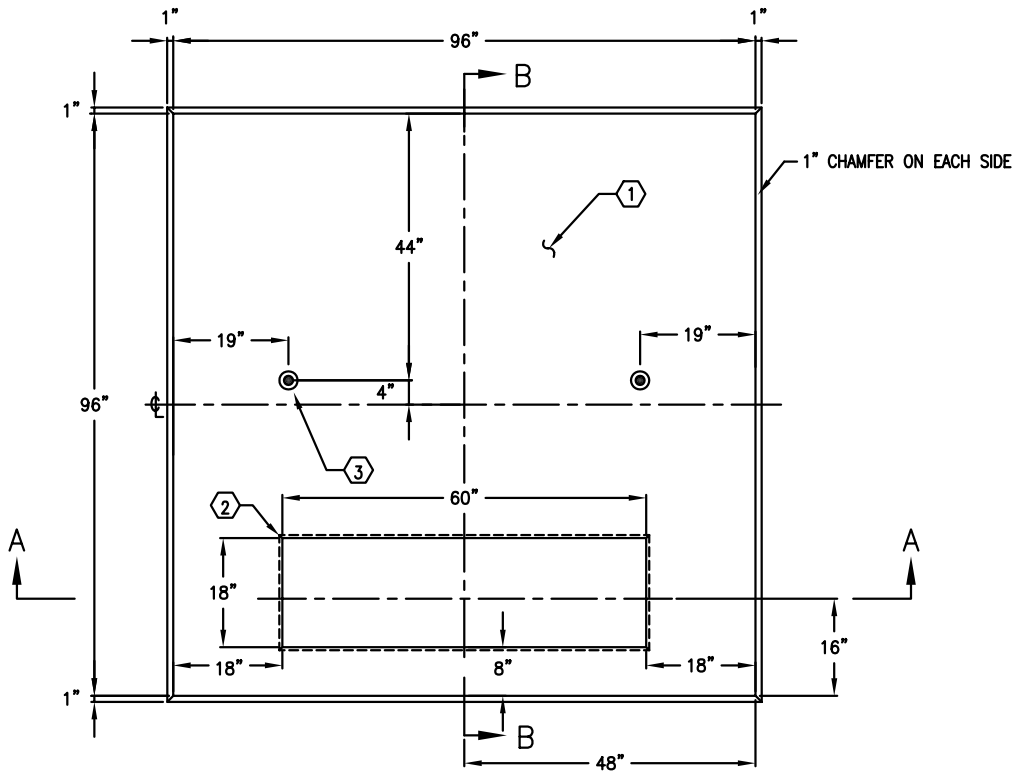


8'-0" x 8'-0" 1000 KVA TO 2500 KVA TRANSFORMER PAD x 8" THICK

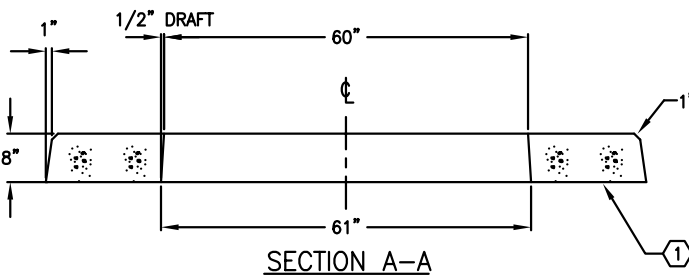
1. PD9696-T8-25, 8" TRANSFORMER PAD. (CG-PD9696-T8-25) W.T 5740#.
2. 18" x 60" OPENING (1) TABLE MOUNTED.
3. (2) 2 TON RISS X 3 3/8" GALV. SL ANCHORS (55-20-203)

ORDERING INFORMATION:

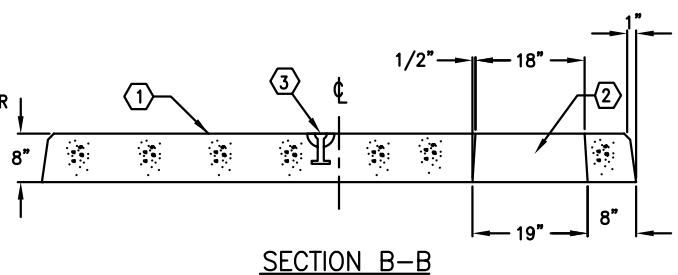
PD9696-T8-25 FOR PAD AS SHOWN.
 PER I.I.D. SPEC.
 TOTAL WT. 5740#.



PLAN VIEW



SECTION A-A



SECTION B-B



AUTOCAD REL 14

| # | DATE | DESCRIPTION | BY |
|---|----------|---------------------------------|-----|
| E | 12-01-03 | GENERAL REVISION | YK |
| F | 01-30-08 | CHANGE CABLE OPENING TO 18"x60" | DRG |

PD9696-T8-25

PER I.I.D. ??? Rev.03 06-11-03

3-6-89