

8'-0" x 9'-4" LADWP DUCTED TUNNEL VAULT x 14'-0" LONG

NOTES:

- VAULT DESIGNED IN ACCORDANCE WITH ASHTO H-20-44 TRAFFIC BRIDGE LOADING USING 5,500 PSI [37.92MPa] COMPRESSIVE STRENGTH CONCRETE AND 60,000 PSI [413.2MPa] YIELD STRENGTH ASTM A-706 STEEL REINFORCEMENT PER CALC. #30444.
- VAULT TO BE PLACED ON 6" BASE OF CRUSHER RUN FOR EASE OF INSTALLATION AND EVEN LEAD DISTRIBUTION.
- LIMIT OF COVER OVER ROOF SECTION IS 1'-0" TO 4'-0".
- CONCRETE MIX USED IN POURING THIS PRODUCT SHALL USE FLY ASH AS AN ADMIXTURE.
- EACH CONCRETE SECTION SHALL BE MARKED ON THE INSIDE & OUTSIDE WITH "JENSEN PRECAST", THE DESIGNATION "DM7/7A", AND THE DATE OF POUR.
- EACH CONCRETE SECTION SHALL HAVE CAST-IN ON THE INSIDE "JENSEN", THE YEAR, AND THE DESIGNATION "7A".
- NO SHARP OR ROUGH EDGES ON THE TERMINATORS ENTERING THE VAULT.

THE FOLLOWING MATERIAL TO BE SHIPPED WITH VAULT:

- (a) 7/8" x 1 3/4" CONCREAL GASKET (90 FEET REQUIRED).
- (b) 1 5/8" GALVANIZED UNISTRUT x 92" LONG (06-2090) W/(6) 1/2"-13NC x 1 1/2" ROUND HEAD SLOTTED PLATED MACHINE SCREWS & (6) 1/2" PLATED WASHERS (6 REQUIRED).
- (c) 1 5/8" x 1 5/8" GALVANIZED UNISTRUT x 36" LONG (06-2086) W/ SCREWS & (3) 1/2" ROUND HEAD SLOTTED PLATED MACHINE SCREWS & (3) 1/2" PLATED WASHERS (2 REQUIRED).
- (d) 1 5/8" x 1 5/8" GALVANIZED UNISTRUT x 22" LONG (06-2084) W/ SCREWS & (2) 1/2" PLATED WASHERS (2 REQUIRED).
- (e) 1 1/2" x 1 1/4" HEX HEAD S.S. BOLT (3 REQUIRED).
- (f) 3/4" x 20" COIL PVD (12 REQUIRED).
- (g) 7/8" x 1/2" x 3" WASHER GALVANIZED (24 REQUIRED).
- (h) 3/4" HEX NUT PVD (24 REQUIRED).
- (i) LADDER HANGER ASSEMBLY (1 REQUIRED).
- (j) -3382 LADDER 12' (1 REQUIRED).

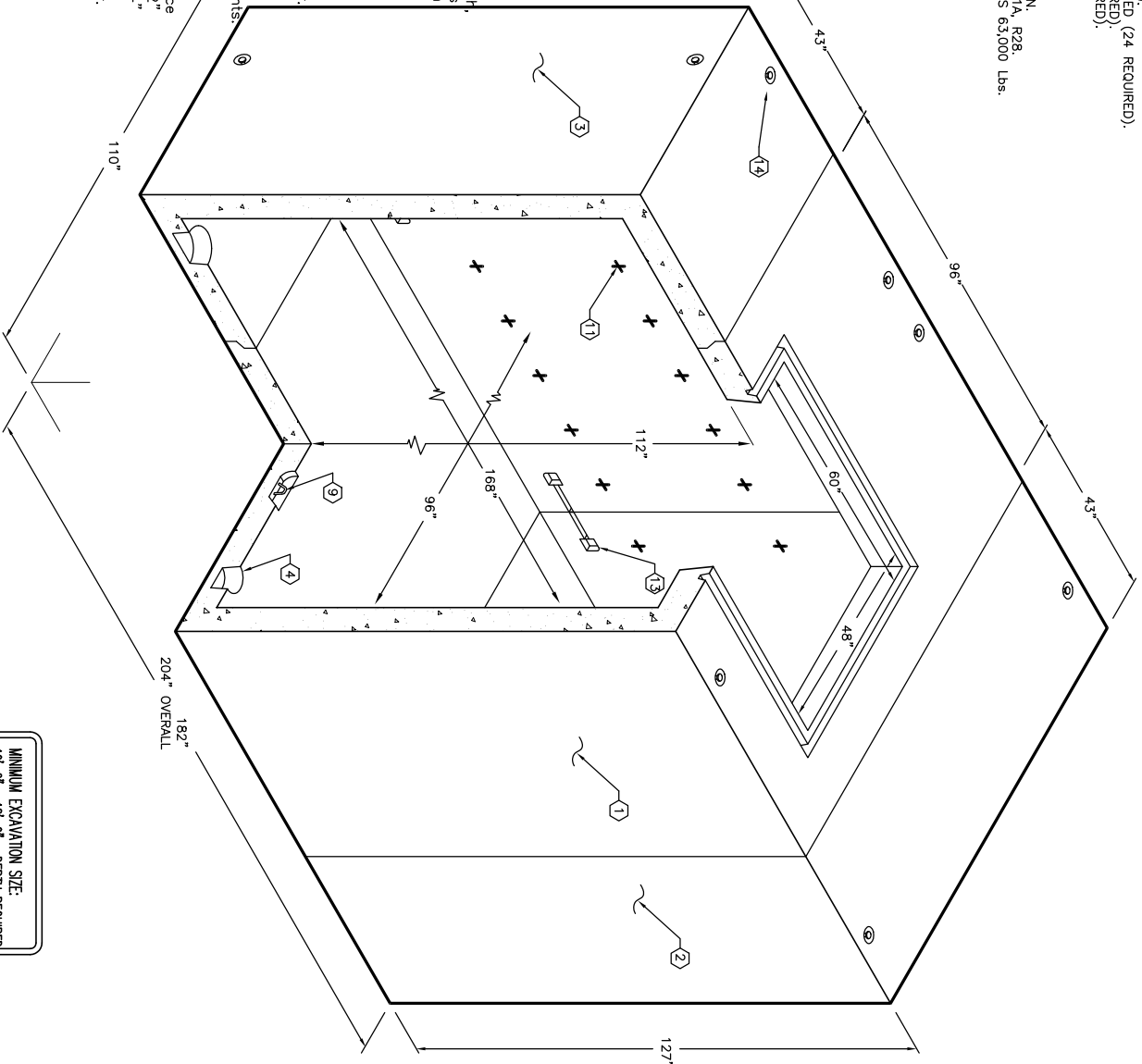
ORDERING INFORMATION:

K894-TV14-12 FOR ASSEMBLY AS SHOWN.
APPROVED FOR LADWP SPEC. H-171, G-1A, R29.
TOTAL WEIGHT OF ASSEMBLY AS SHOWN IS 63,000 Lbs.

GENERAL NOTES:

1. Minimum soil bearing capacity is hereby assumed to be 2000 PSF unless otherwise documented by a geotechnical report that shall be provided to Jensen Precast by the end user. Jensen Precast shall not be held responsible for the soil bearing capacity.
2. Installation of Manholes, Vaults, Handholes, Meter Boxes etc. will be as per Jensen installation procedures.
3. Structural modification to the Jensen line of products is not permitted without prior written approval from Jensen Engineering Department.
4. Do not scale the drawings, verify all dimensions including rough openings, if any discrepancies are found, notify the Jensen Engineer immediately.
5. The Jensen Engineer will interpret the intent of the drawings in case of possible conflict or discrepancy.
6. Permissible Variations:
Dimensional Tolerances - The length, width, height, or dia. measurements of the structure when measured on the inside surfaces shall not deviate from design dimensions by more than the following:
Dimensions: 0 to 5 Feet 1/4"
5 to 10 Feet 3/8"
10 to 20 Feet as agreed upon between the supplier and purchaser.
Squareness Tolerance:
The inside of the precast concrete component shall be square as determined by diagonal measurements. The difference between such measurements shall not exceed the following:
Measured Length: Allowable Difference 0 to 10 Feet 1/2"
10 to 20 Feet 3/4"
20 Feet and over as agreed upon between the supplier and purchaser.
- 7.

1. T894-C96-12, 96" INTERMEDIATE SECTION, WT. 26,000 Lbs.
2. T894-E36-12AT, 36" END SECTION, WT. 18,500 Lbs.
3. T894-E36-12BT, 36" END SECTION, WT. 18,500 Lbs.
4. 8" DIA. x 9" DIA. SLUMP x 5" DEEP. LOCATE AS FOLLOWS: INTERMEDIATE SECTION (1) CORE MID.
5. 24" x 82" DUCTED KNOCKOUT, 12" DEEP. DRAFT AS FOLLOWS: (1) EACH CORE MID.
6. 18" x 18" KNOCKOUT x 6" DEEP. LOCATE AS FOLLOWS: END SECTION (1) EACH CORE MID.
7. 14" DIA. x 15" DIA. VENT. KNOCKOUT x 5" DEEP. LOCATE AS FOLLOWS: INTERMEDIATE SECTION (2) CORE MID., END SECTION (2) EACH CORE MID.
8. 5" DIA. TERMINATOR. LOCATE AS FOLLOWS: END SECTION (30) EACH SURFACE MID.
9. 7/8" DIA. x 4 1/2" GALVANIZED PULL IRON. LOCATE AS FOLLOWS: INTERMEDIATE SECTION (1) CORE MID.
10. SECTION (2) GALVANIZED COIL, THREADED INSERT. LOCATE AS FOLLOWS: END SECTION (2) EACH CORE MID.
11. 4 1/2" PLASTIC INSERT LOCATE AS FOLLOWS: INTERMEDIATE SECTION (38) CORE MID.
12. 82" DIA. KNOCKOUT. LOCATE AS FOLLOWS: BOTTOM SECTION (2) CORE MID.
13. 950 BOLT-UP CASTING W/ RECESS. LOCATE AS FOLLOWS: INTERMEDIATE SECTION (8) CORE MID., EXTENSION SECTION (8) CORE MID.; END SECTION (4) EACH CORE MID.
14. 2" DIA. TERMS W/ 1" DIA. GROUND ROD KNOCKOUT. LOCATE AS FOLLOWS: BOTTOM SECTION (8) CORE MID.



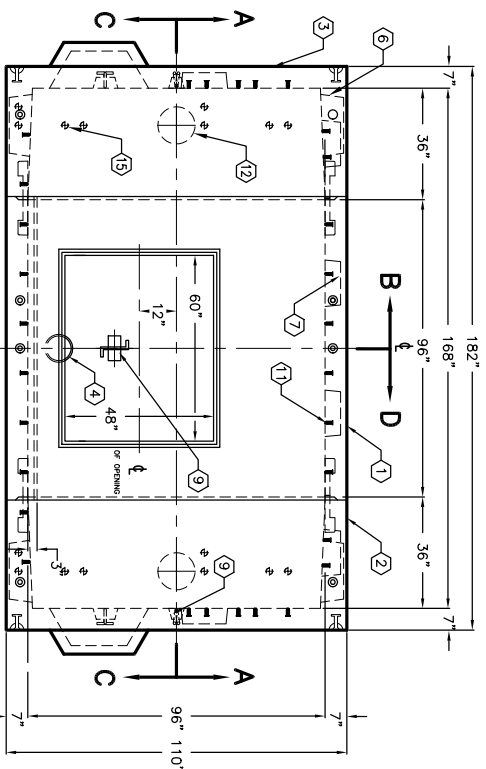
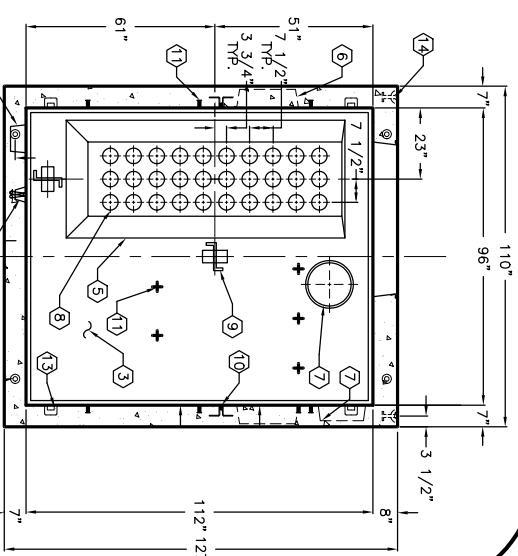
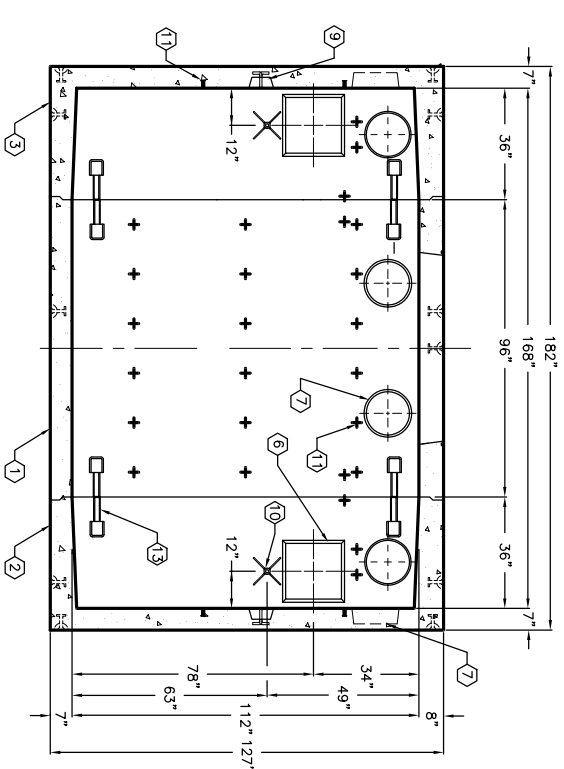
MINIMUM EXCAVATION SIZE:
10'-2" x 18'-0" x DEPTH REQUIRED

K894-TV14-12

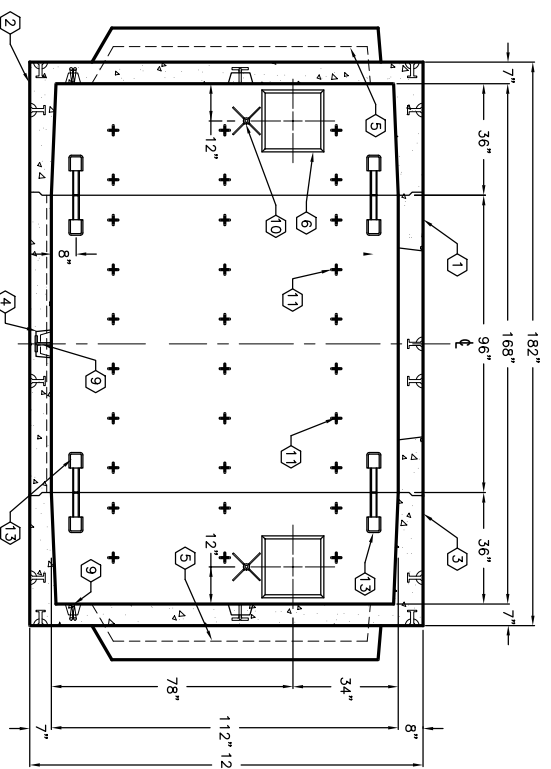
PER LADWP SPEC. H-171, G-1A, R29

03-01-02

JENSEN
PRECAST



PLAN VIEW



SECTION C-C

SECTION D-D

JENSEN
PRECAST

PER LADWP SPEC. H-171, G-1A, R29

03-01-02

K894-TV14-12

#	DATE	DESCRIPTION	BY