

6'-0" x 12'-0" BURBANK VAULT x 7'-0" DEEP

NOTES:

- VAULT DESIGNED IN ACCORDANCE WITH AASHTO H-20-44 BRIDGE LOADING USING 5,500 PSI [37.92MPa] COMPRESSIVE STRENGTH CONCRETE AND 60,000 PSI [413.2MPa] YIELD STRENGTH ASTM A-706 STEEL REINFORCEMENT PER CALCS #30415.
- VAULT TO BE PLACED ON A MIN. 6" BASE OF CRUSHER RUN FOR EASE OF INSTALLATION AND EVEN LOAD DISTRIBUTION.
- INSIDE SURFACES OF VAULT TO BE PAINTED WITH WHITE LATEX PAINT.

THE FOLLOWING MATERIAL TO BE SHIPPED WITH EACH VAULT:
 (o) 7/8" x 1 3/4" CONSEAL CONSEAL GASKET (45 FT. REQ'D.)

ORDERING INFORMATION:

K612-FV84-17 FOR ASSEMBLY AS SHOWN.
 APPROVED FOR CITY OF BURBANK SPEC. CE-1188.
 TOTAL WEIGHT OF ASSEMBLY IS 30,076 Lbs.

GENERAL NOTES:

1. Minimum soil bearing capacity is hereby assumed to be 2000 PSF unless otherwise documented by a geotechnical report that shall be provided to Jensen Precast by the end user. Jensen Precast shall not be held responsible for the soil bearing capacity.
2. Installation of Manholes, Vaults, Handholes, Meter Boxes, etc. will be as per Jensen installation procedures.
3. Structural modification to the Jensen line of products is not permitted without prior written approval from Jensen Engineering Department.
4. Do not scale the drawings, verify all dimensions including rough openings, if any discrepancies are found, notify the Jensen Engineer immediately.
5. The Jensen Engineer will interpret the intent of the drawings in case of possible conflict or discrepancy.
6. Permissible Variations: Dimensional Tolerances – The length, width, height, or dia. measurements of the structure when measured on the inside surfaces shall not deviate from design dimensions by more than the following:

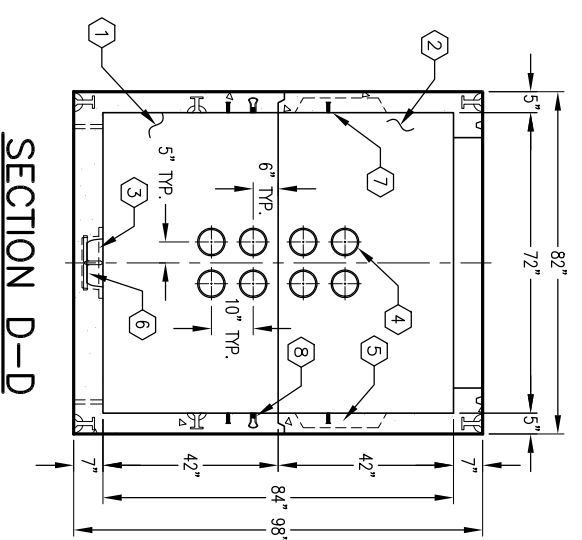
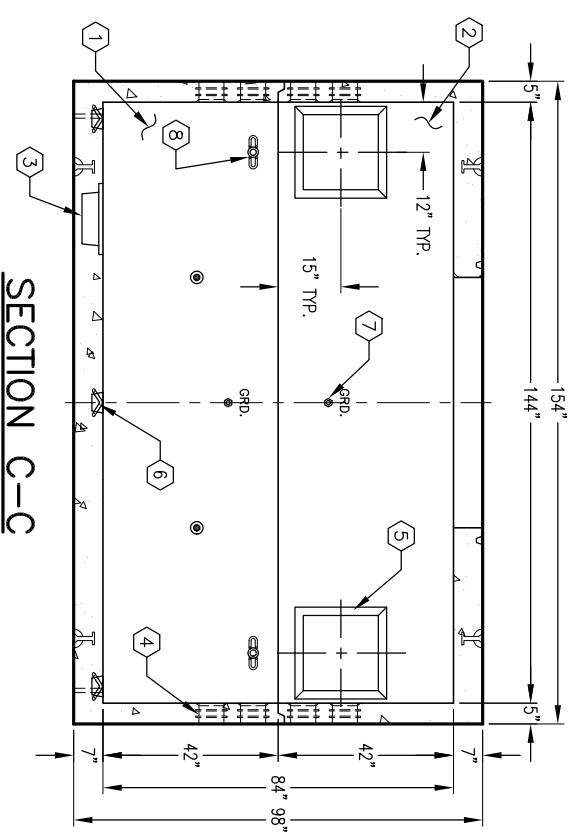
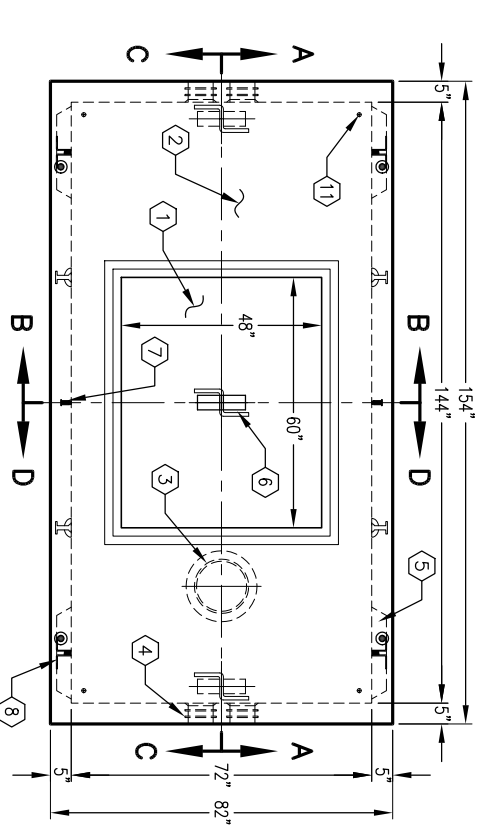
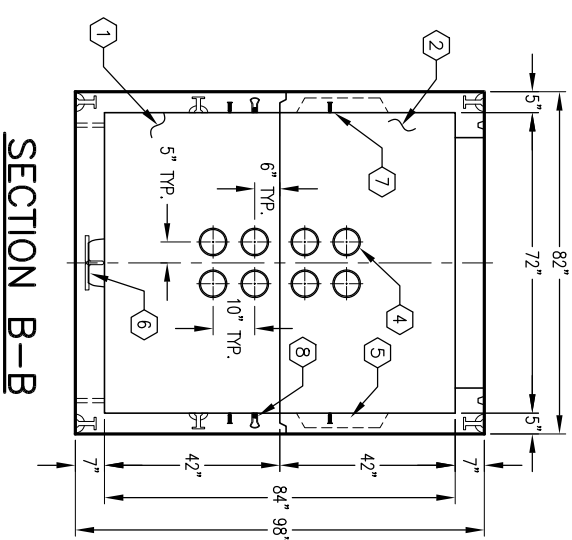
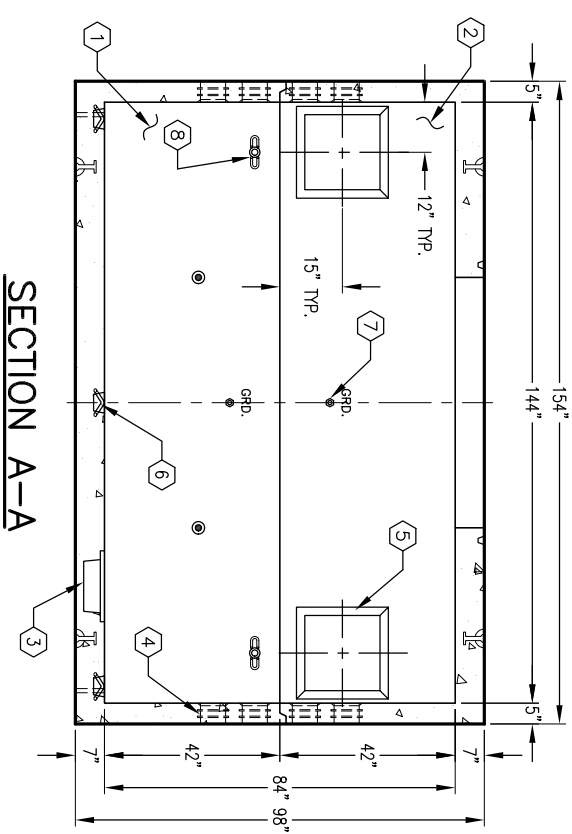
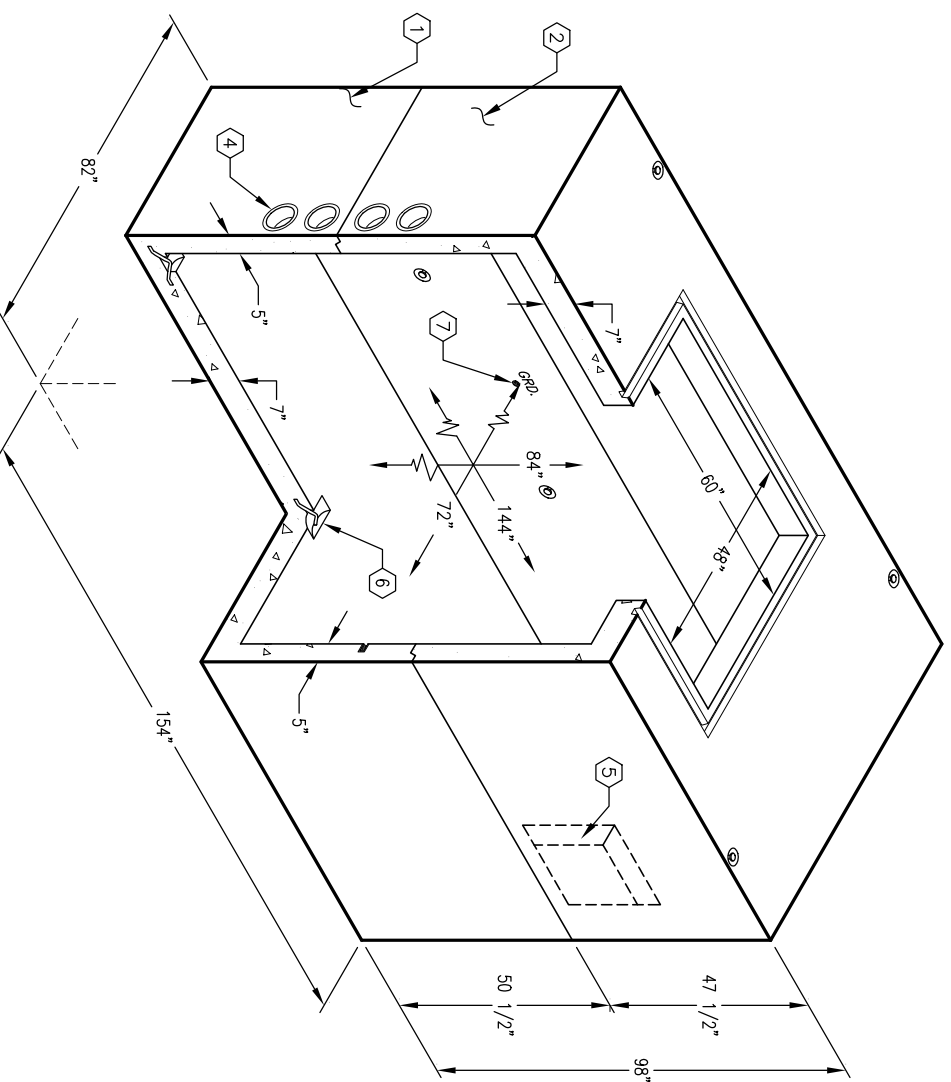
| | |
|---------------|------------|
| Dimensions: | Tolerance: |
| 0 to 5 Feet | 1/4" |
| 5 to 10 Feet | 3/8" |
| 10 to 20 Feet | 1/2" |

 between the supplier and purchaser.
7. Squariness Tolerance: he inside of the precast concrete component shall be square as determined by diagonal measurements. The difference between such measurements shall not exceed the following:

| | |
|------------------|----------------------|
| Measured Length: | Allowable Difference |
| 0 to 10 Feet | 1/2" |
| 10 to 20 Feet | 3/4" |

 between the supplier and purchaser.

1. UV612-B42-17, 42" BOTTOM SECTION, WT. 15,913 Lbs.
2. UV612-T42-17, 42" TOP SECTION W/4x5", WT. 14,163 Lbs.
3. 12" x 13" DIA. SUMP x 5" DEEP, W/RECESS TO ACCOMMODATE SUMP COVER, BOTTOM SECTION (1) CORE MTD.
4. 6" DIA. CONTERMS, BOTTOM SECTION (8) SHELL MTD.; TOP SECTION (8) SHELL MTD.
5. 18" x 18" KNOCKOUT x 3 1/2" DEEP, DRAFT 2" TYP. ALL SIDES, TOP SECTION (4) CORE MTD.
6. 7/8" DIA. x 3 3/8" GALV. PULL IRON, BOTTOM SECTION (3) CORE MTD.
7. 1/2" THRD. BRONZE INSERT BRAZED TO STRUCTURAL STEEL, "GRD" SHALL BE STENCILED IN RED LETTERS (1 1/2" MIN - 2" MAX) ON THE CONCRETE ABOVE INSERT, BOTTOM SECTION (2) CORE MTD.; TOP SECTION (2) CORE MTD.
8. 1" DIA. THRD. INSERT, BOTTOM SECTION (4) CORE MTD.
11. 1" DIA. BLIND GROUND ROD HOLE, BOTTOM (4) CORE MTD.



K612-FV84-17

Autocad REL. 14

PER CITY OF BURBANK SPEC. CE-1188

03-01-02



K612-FV84-17

PER CITY OF BURBANK SPEC. CE-1188

03-01-02

| # | DATE | DESCRIPTION | BY |
|---|------|-------------|----|
| | | | |