

8'-0" x 20'-0" ANAHEIM TRANSMISSION VAULT X 9'-4" DEEP

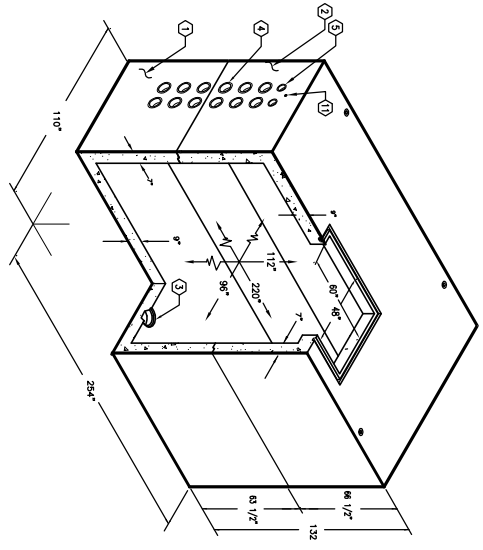
- NOTES:**
- VAULT DESIGNED IN ACCORDANCE WITH ACI 318.
 - KNUX CONCRETE SHALL BE 4000 PSI COMPRESSIVE STRENGTH.
 - LOADING USING 5,500 PSI (37,92MPa) COMPRESSIVE STRENGTH AT 28 DAYS CONCRETE AND 60,000 PSI (413.2MPa) STRENGTH ASTM A-706 STEEL REINFORCEMENT PER CALCS. #31012.
 - VAULT TO BE PLACED ON A MIN. 6" BASE OF CRUSHER DISTRIBUTION.
 - INSTALLATION LIMITS OF THE ROOF SECTION ARE 1'-6" MIN. TO 4'-0" MAX.
 - PAINT ALL WALLS AND CEILING WITH TWO COATS OF WHITE LATEX FLAT PAINT (FRAZZEE #410 OR EQUAL).
 - LADDER REQUIRED
 - ALL JOINTS SHALL BE GASKETED WITH CONSEAL.

THE FOLLOWING MATERIAL TO BE SHIPPED WITH EACH VAULT:
 (a) 7/8" x 1 3/4" CONSEAL GASKET (90 FT. RECD.)

ORDERING INFORMATION:

K820-FV12-16 FOR ASSEMBLY AS SHOWN,
 PER CITY OF ANAHEIM SPECS. CU 1600-95B
 TOTAL WEIGHT OF ASSEMBLY AS SHOWN IS 89,471 Lbs.

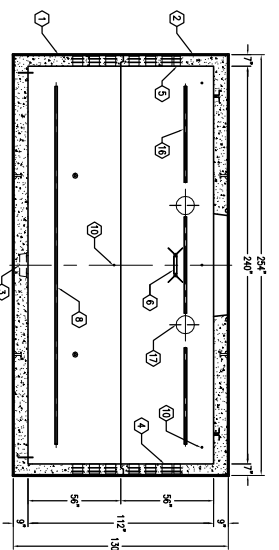
1. UN820-B56-16, 56" BOTTOM SECTION, WT. 45,648 lbs.
2. UN820-T56-16, 56" TOP SECTION, WT. 43,823 lbs.
3. 13" x 14" DIA. SLUMP x 5" DEEP W/RECESS AND SLUMP COVER, BOTTOM SECTION (1) CORE MTD.
4. 24" CORE TERMS, BOTTOM SECTION (24) SHELL MTD. TOP SECTION (24) CORE MTD.
5. 4" DIA. DOUBLE GALV. COIL INSERT, BOTTOM SECTION (9) CORE MTD.
6. 1" DIA. DOUBLE GALV. COIL INSERT, BOTTOM SECTION (9) CORE MTD. TOP SECTION (9) CORE MTD.
7. 1 5/8" SINGLE GALV. COIL INSERT, ROOF (6) CORE MTD.
8. 1 5/8" x 1 5/8" GALV. UNISTRUT x 21.6 LG. BOTTOM SECTION (2) CORE MTD. TOP SECTION (2) CORE MTD.
9. 1 5/8" x 1 5/8" GALV. UNISTRUT x 48" LG. BOTTOM SECTION (2) CORE MTD. TOP SECTION (2) CORE MTD.
10. 1/2" THERAPED BRONZE INSERT WELDED TO STRUCTURAL REBAR CAGE.
11. 1" DIA. CAPPED PVC CONDUIT, TOP SECTION (4) CORE MTD.
12. 5/8" DIA. COPPER CLAD GROUND ROD, WELD TO REINFORCEMENT & ROOF, 3' MIN., BOTTOM SECTION (2) CORE MTD.
13. 1 5/8" x 1 5/8" GALV. UNISTRUT x 58" LG. TOP SECTION (6) CORE MTD.
14. 1 5/8" x 1 5/8" GALV. UNISTRUT x 58" LG. TOP SECTION (6) CORE MTD.
15. 10" DIA. PLASTIC VENT COUPLING (55-30-80), TOP SECTION (6) CORE MTD.



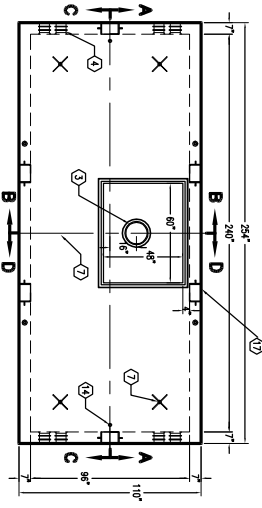
MINIMUM EXCAVATION SIZE:
 10'-2" x 16'-2" x 10'3" DEPTH RECD.



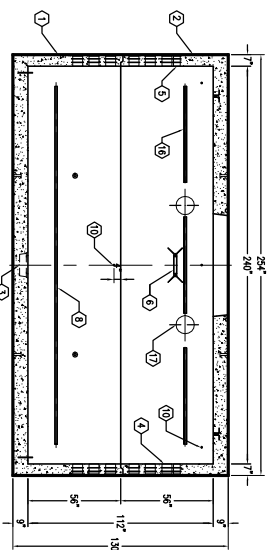
K820-FV12-16
 PER CITY OF ANAHEIM SPEC. CU 1600-95B
 01-01-02



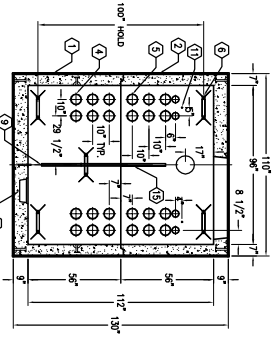
SECTION A-A



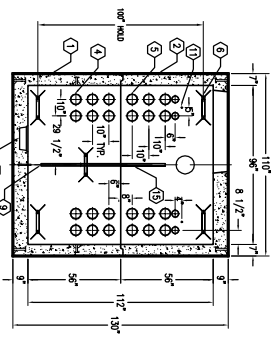
PLAN VIEW



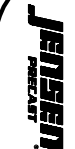
SECTION C-C



SECTION B-B



SECTION D-D



K820-FV12-16
 PER CITY OF ANAHEIM SPEC. CU 1600-95B
 01-01-02

#	DATE	DESCRIPTION	BY