

4'-6" x 8'-6" PASADENA PARKWAY TRANSFORMER ENCLOSURE x 6'-5" DEEP

NOTES:

TRANSFORMER ENCLOSURE DESIGNED IN ACCORDANCE WITH AASHTO H-20-44 TRAFFIC BRIDGE LOADING USING 5,500 PSI [37.92MPa] COMPRESSIVE STRENGTH CONCRETE AND 60,000 PSI [413.2MPa] YIELD STRENGTH ASTM A-706 STEEL REINFORCEMENT PER CALCS. #31458.

COVER AND GRATE ASSEMBLY DESIGNED FOR PARKWAY LOADING PER CALCS. #31457

TRANSFORMER ENCLOSURE TO BE PLACED ON A 6" BASE OF CRUSHER RUN FOR EASE OF INSTALLATION AND EVEN LOAD DISTRIBUTION.

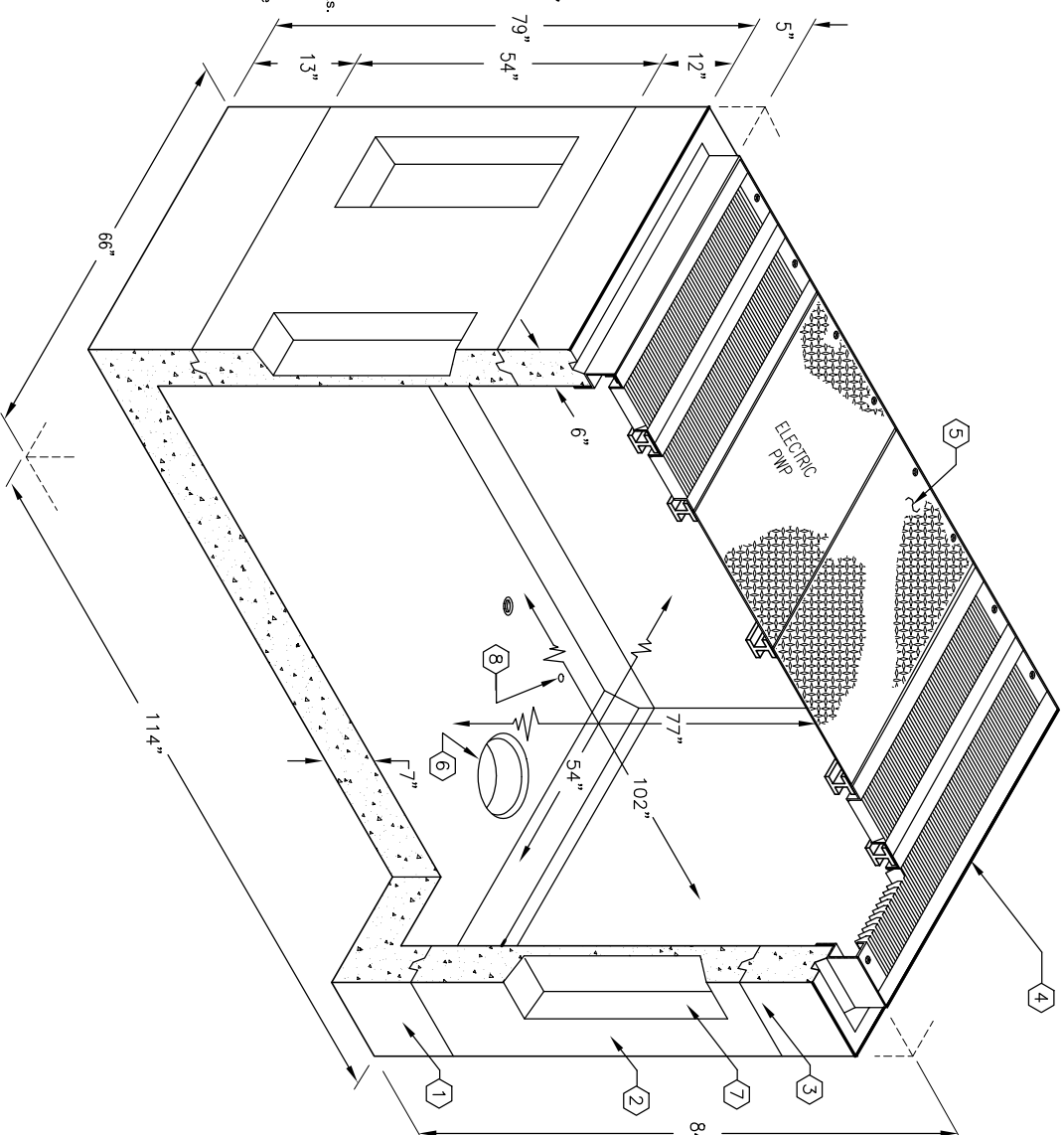
THE FOLLOWING MATERIAL TO BE SHIPPED WITH EACH VAULT:
(0) 7/8" x 1 3/4" CONSEAL GASKET (135 Ft. REQ'D.)

ORDERING INFORMATION:

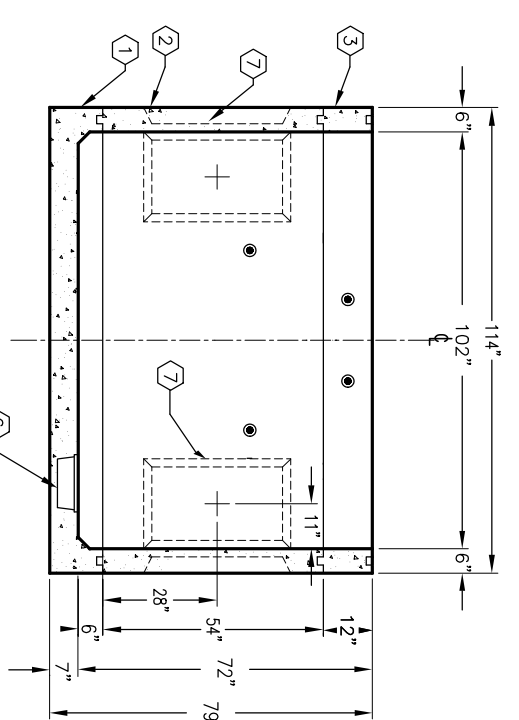
K4686-TE78-20 FOR ASSEMBLY AS SHOWN.
APPROVED FOR PASADENA SPECS.
TOTAL WEIGHT OF ASSEMBLY IS 15,600 Lbs.

GENERAL NOTES:

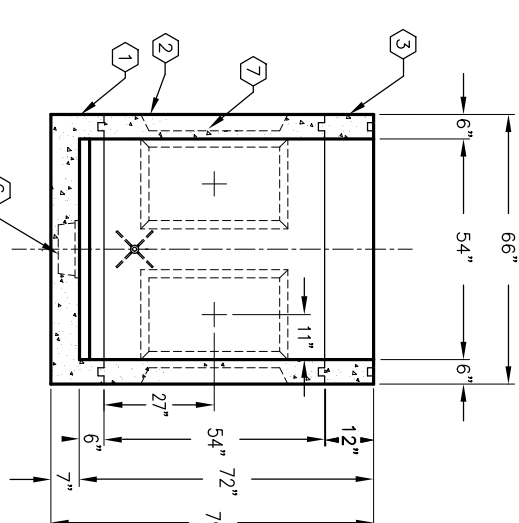
- Minimum soil bearing capacity is hereby assumed to be 2000 PSF unless otherwise documented by a geotechnical report that shall be provided to Jensen Precast by the end user. Jensen Precast shall not be held responsible for the soil bearing capacity. Installation of Manholes, Vaults, Handholes, Meter Boxes etc. will be as per Jensen installation procedures.
- Structural modification to the Jensen line of products is not permitted without prior written approval from Jensen Engineering Department.
- Do not scale the drawings, verify all dimensions including rough openings, if any, discrepancies are found, notify the Jensen Engineer immediately.
- The Jensen Engineer will interpret the intent of the drawings in case of possible conflict or discrepancy.
- Permissible Variations: Dimensional Tolerances – The length, width, height, or dia. measurements of the structure when measured on the inside surfaces shall not deviate from design dimensions by more than the following: Tolerance: 0 to 5 Feet 1/4" 5 to 10 Feet 3/8" 10 to 20 Feet as agreed upon between the supplier and purchaser. Squaresness Tolerance: The inside of the precast concrete component shall be square as determined by diagonal measurements. The difference between such measurements shall not exceed the following: Measured Length: Allowable Difference 0 to 10 Feet 1/2" 10 to 20 Feet 3/4" 20 Feet and over as agreed upon between the supplier and purchaser.



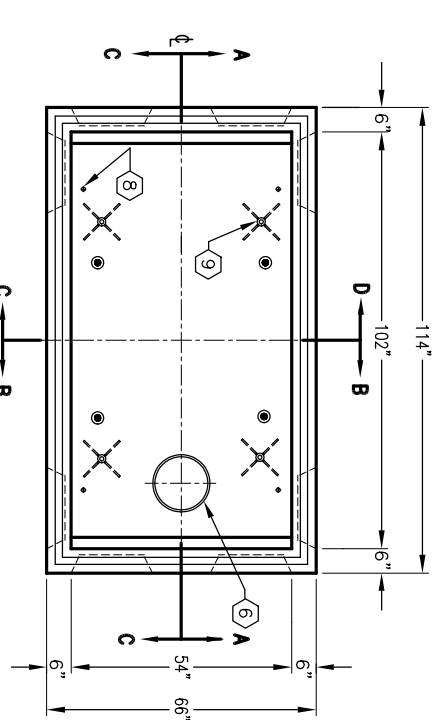
- PB4686-B-20, 6" BOTTOM SECTION WT. 6,015 Lbs.
- PB4686-54-20, 54" INTERMEDIATE SECTION. WT. 6,280 Lbs.
- PB4686-R12-20, 12" EXTENSION SECTION WT. 2,125 Lbs.
- F4686-PB-BD LOOSE ADJUSTABLE GALVANIZED FRAME WT. 240 Lbs.
- C44686-PG-20 SIX PIECE PARKWAY GALV. COVER AND GRATE ASSEM. INCLUDES (2) SC4686-GV GALVANIZED COVER, (4) SC4686-120G GALV. (S) SCB4686-123GV GALVANIZED I BEAMS & (16) 1/2" X 1 1/2" HEX HEAD STAINLESS STEEL BOLTS, WT. 940 Lbs.
- 12" DIA. X 13" DIA. 4 1/2" DEEP SUMP W/RECESS TO ACCOMMODATE SUMP COVER. LOCATE AS FOLLOWS: BOTTOM SECTION (1) CORE MTD.
- 18" x 36" KNOCKOUT X 4" DEEP DRAFT AS FOLLOWS: T=2", S1=2", S2=2", B=2". LOCATE AS FOLLOWS: INTERMEDIATE SECTION (8) SHELL MTD.
- 1" DIA. BLIND GROUND ROD HOLES. LOCATE AS FOLLOWS: BOTTOM SECTION (4) CORE MTD.
- 1" COIL THRD. INSERT GALV. LOCATE AS FOLLOWS: BOTTOM SECTION (4) CORE MTD., (2) INTERMEDIATE SECTION CORE MTD.



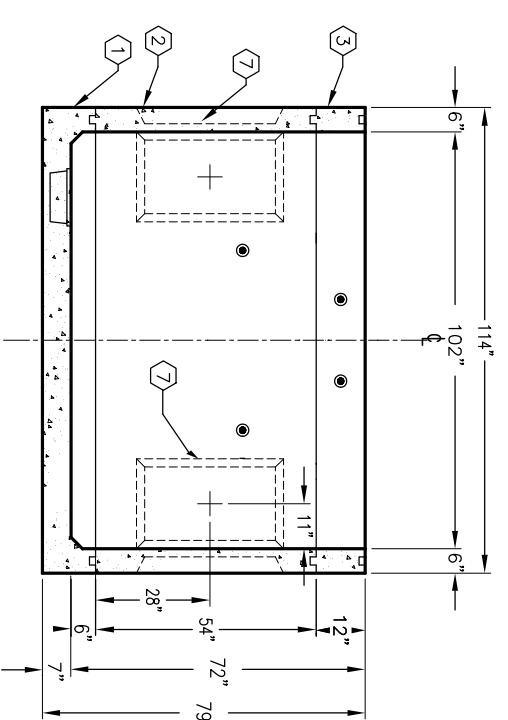
SECTION A-A



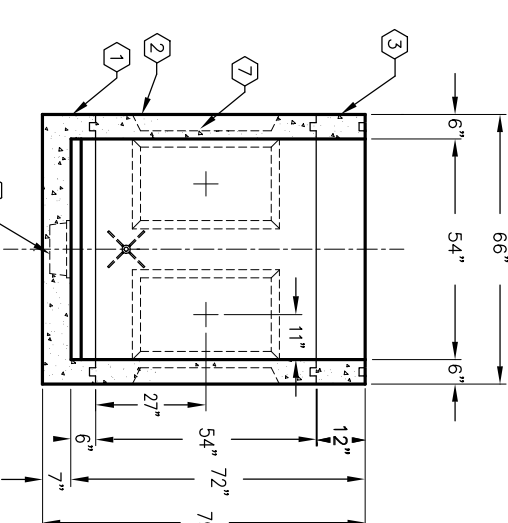
SECTION B-B



PLAN VIEW



SECTION C-C



SECTION D-D

MINIMUM EXCAVATION SIZE:
6'-6" x 10'-6" x DEPTH REQ'D.

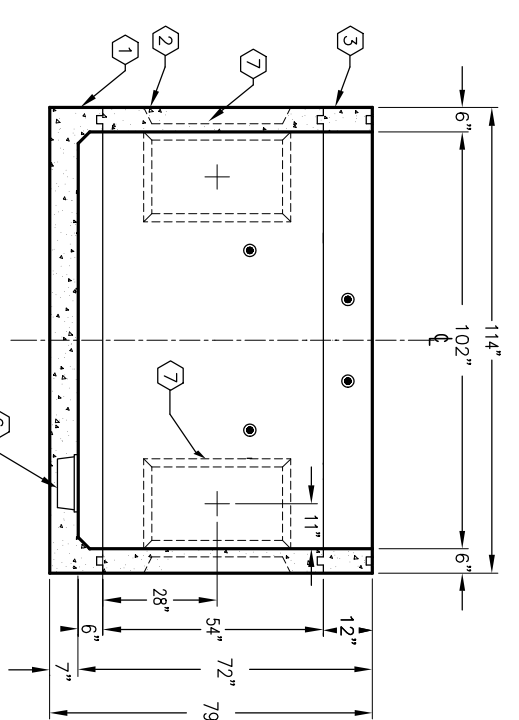
K4686-TE78-20

PER PASADENA SPECS. 8-1-1276

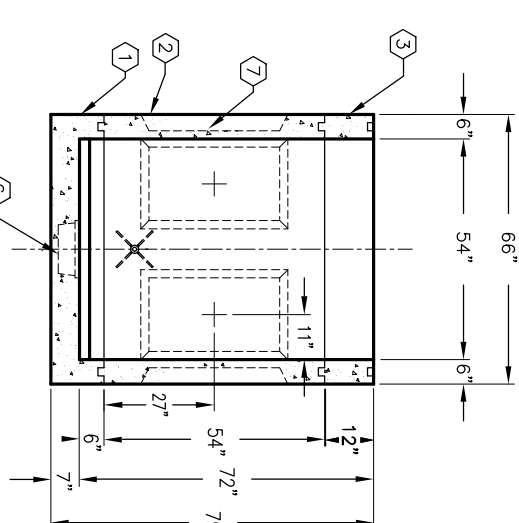
03-01-02



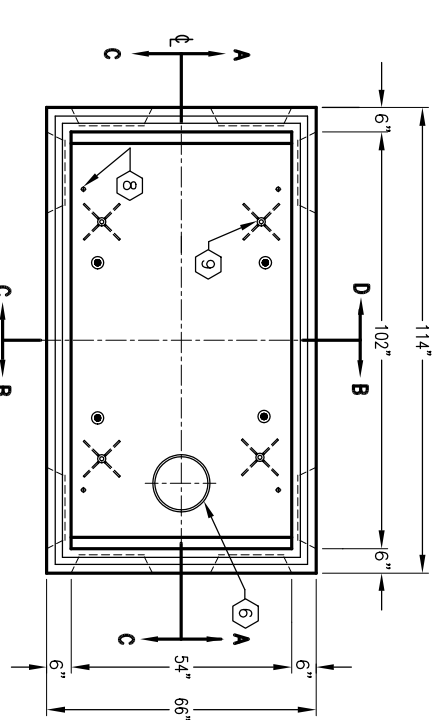
AUTOCAD REL. 14



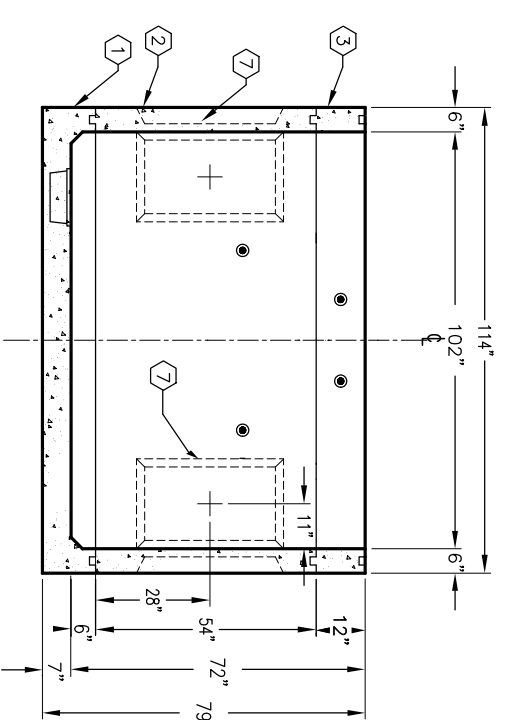
SECTION A-A



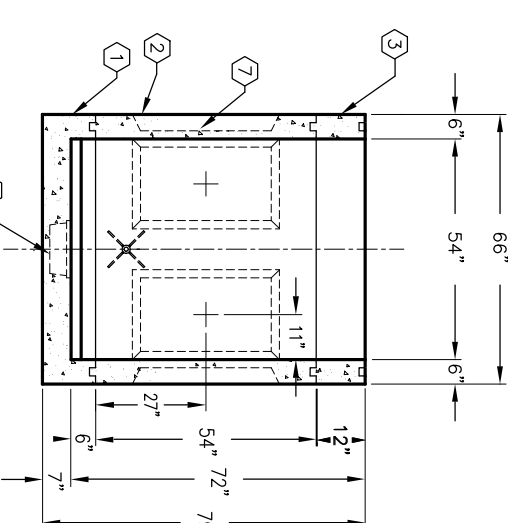
SECTION B-B



PLAN VIEW



SECTION C-C



SECTION D-D

MINIMUM EXCAVATION SIZE:
6'-6" x 10'-6" x DEPTH REQ'D.

K4686-TE78-20

PER PASADENA SPECS. 8-1-1276

03-01-02



AUTOCAD REL. 14

#	DATE	DESCRIPTION	BY

K4686-TE78-20

PER PASADENA SPECS. 8-1-1276

03-01-02