

# 3'-0" x 5'-0" PASADENA DUCTED INTERCEPT BOX X 48" DEEP

**NOTES:**

□ PULL IRON BOX DESIGNED IN ACCORDANCE WITH ASHTO H-20-44 TRAFFIC BRIDGE LOADING USING 5,500 PSI COMPRESSIVE STRENGTH CONCRETE AND 60,000 PSI YIELD STRENGTH ASTM A-706 STEEL REINFORCEMENT.

□ STEEL COVER DESIGNED FOR PARKWAY LOADING 300 psf. OR TRAFFIC H-20 LOADING.

■ PULL BOX TO BE PLACED ON A MIN. 6" BASE OF CRUSHER RUN FOR EASE OF INSTALLATION AND EVEN LOAD DISTRIBUTION.

**RACKING PACKAGE:**

18 HOLE CABLE RACKS W/BOLTS = 4.

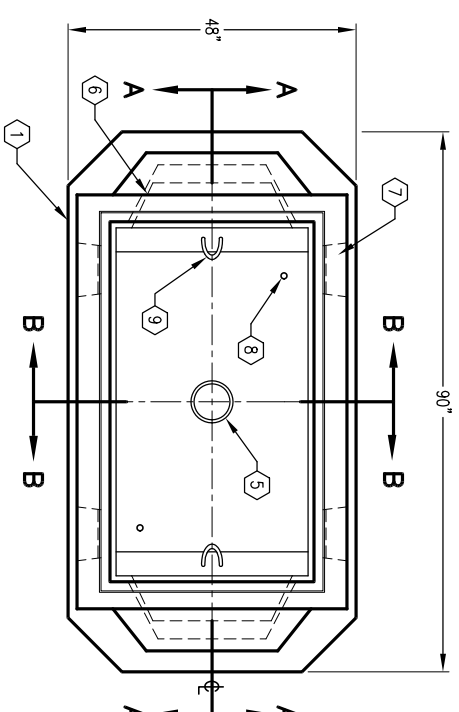
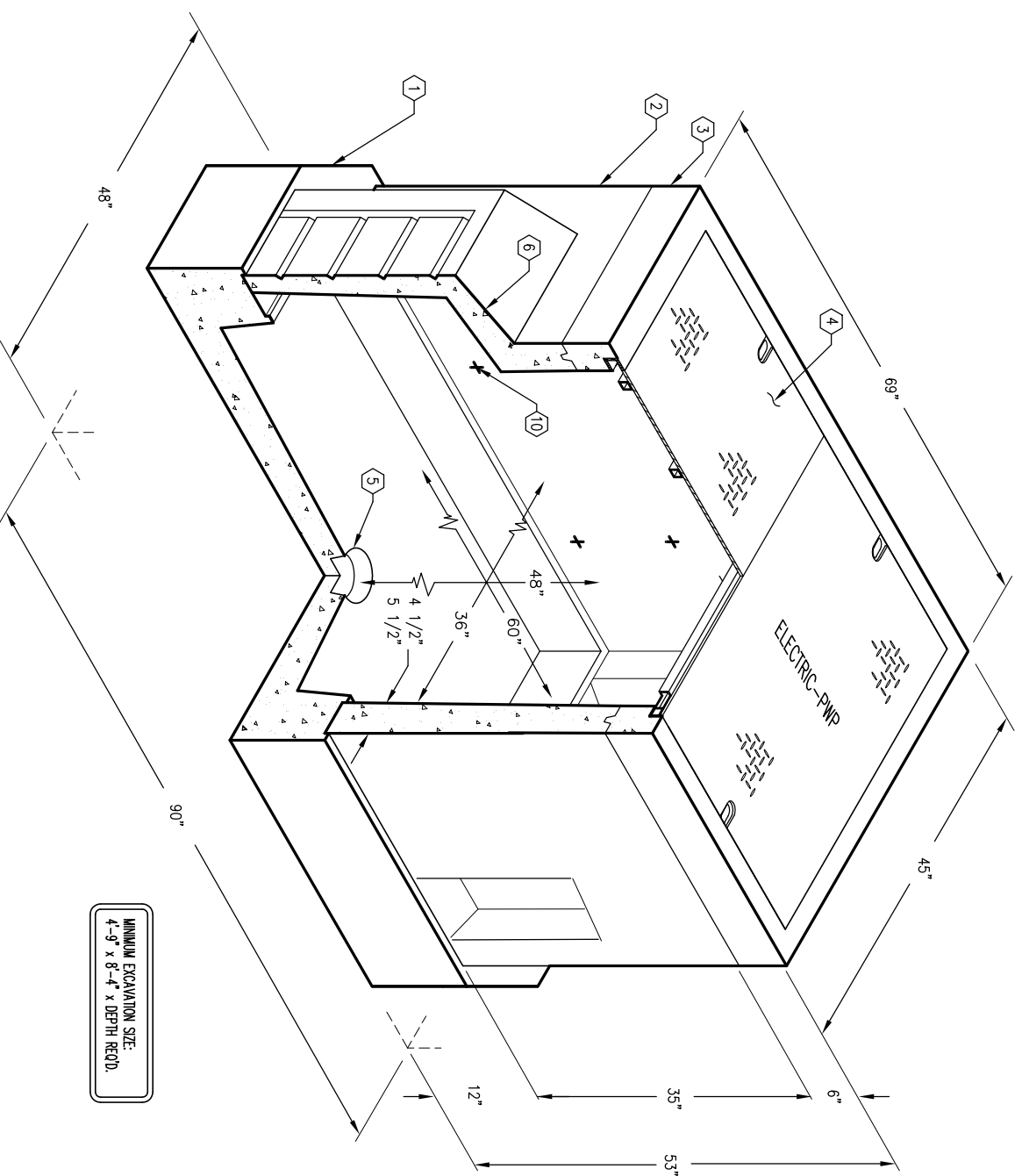
**ORDERING INFORMATION:**

TOTAL WEIGHT OF ASSEMBLY IS 6,541#.

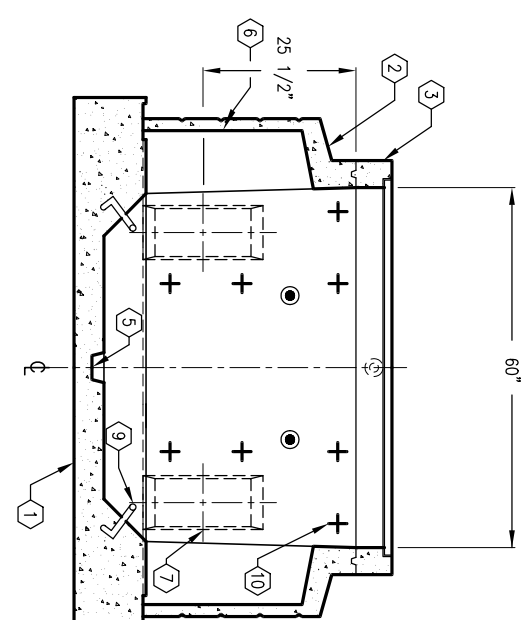
**PARKWAY ASSEMBLY WITH STEEL B/D COVER K3660-D148-20P.**

**LIGHT TRAFFIC ASSEMBLY WITH STEEL B/D COVER K3660-D148-20L.**

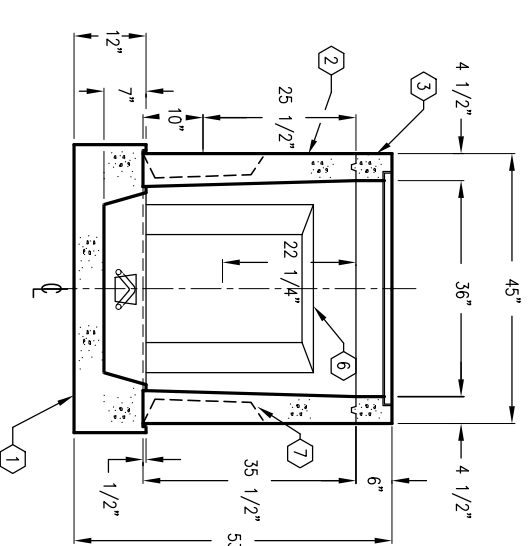
1. PB3660-B7, 7" BOTTOM SECTION (K3660-B7), WT. 2,980#.
2. PB3660-D135-05, 35" INTERCEPT SECTION, WT. 2,852#.
3. PB3660-T6F, 6" TOP SECTION, W/(K3660-PB-ANG) GALVANIZED ANGLE FRAME CAST IN, WT. 527#.
- 4A. SC3660-PRD, TWO PIECE BOLT DOWN PARKWAY COVER.
- 4B. PAINED RED PRIMER, MARKED "ELECTRIC-PWP".
- 4B. SC3660-TRD, TWO PIECE SLIP BOLT DOWN TRAFFIC COVER, PAINTED RED PRIMER, MARKED "ELECTRIC-PWP".
5. 6" DIA. X 7" DIA. SLUMP X 2" DEEP, BOTTOM SECTION (1).
6. 18" X 24 1/4" KNOCKOUT X 10 3/4", INTERMEDIATE SECTION (2).
7. 8" X 16" KNOCKOUT X 4" DEEP, INTERMEDIATE SECTION (4).
8. 1" DIA. BLIND GROUND ROD HOLE. LOCATE AS FOLLOWS: BOTTOM SECTION (2).
9. 7/8" DIA. X 9" GALVANIZED PULL IRON. BOTTOM SECTION (2).
10. 1/2" I-5000 PLASTIC RACKING INSERT. LOCATE AS FOLLOWS: INTERMEDIATE SECTION (1&6).
11. 1/2" P-36-1 O.B. INSERT. LOCATE AS FOLLOWS: TOP SECTION (8).



PLAN VIEW



SECTION A-A



SECTION B-B

**JENSEN**  
PRECAST

AUTOCAD REL. 14

**K3660-D148-20**

PER CITY OF PASADENA SPECS. #P-1-1322

03-01-02

**JENSEN**  
PRECAST

#	DATE	DESCRIPTION	BY

**K3660-D148-20**

PER CITY OF PASADENA SPECS. #P-1-1322

03-01-02