

# 8'-0" x 10'-0" TRANSFORMER PAD W 4'-0" x 7'-0" x 4'-8" DEEP

## MATERIAL LIST- K810-SB54-18

| ITEM | PART NO.      | DESCRIPTION  | CAGE NO./ LOCATE     | WEIGHT/ MOUNT        |
|------|---------------|--|----------------------|----------------------|
| 1    | SB47-B42-11   | 42" INTERMEDIATE SECTION   | CG-SB47-B42-11 (30)  | 6,400 lbs            |
| 2    | SB47-R12      | 12" EXTENSION SECTION  | CG-SB47-R12          | 1,920 lbs            |
| 3    | PD96120-T6-18 | 6" TRANSFORMER PAD   | CG-PD7296-T6-18      | 4,839 ls             |
| 4    | SC3048-PGV    | SC3048-PGV PARKWAY GALVANIZED STEEL COVER<br>(6) 1/2" x 2-1/2" S.S. PENTA HEAD BOLTS |                      | 109 lbs              |
| 5    | KNOCKOUT      | 16" x 16" K.O. x 20" CORNER KNOCKOUT x 3 1/2" DEEP<br>DRAFT T=2", S1=2", S2=2", B=0  | INTERMEDIATE SECTION | (4) SHELL            |
| 6    | 55-21-010     | (2) 1-5/8" x 1-5/8" CALV 12 GA. STRUT x 10" LONG                                     | TRANSFORMER PAD      | (2) TABLE            |
| 7    | 55-10-416     | 1/2" DIA. P-35T OPEN BTM INSERT W/ CLEAN OUT HOLE                                    | TRANSFORMER PAD      | (6) CORE             |
| 8    | 55-10-830     | 1" x 3 1/2" LONG COIL INSERT   | INTERMEDIATE SECTION | (4) CORE & (2) SHELL |
| 9    | 55-20-203     | 2 TON 3-3/8" GALVANIZED RISS FOR HANDLING  | TRANSFORMER PAD      | (4) TABLE            |
| 10   | 20-40-COL     | NAME PLATE MARKED "COLTON ELECTRIC"  |                      |                      |

### NOTES:

- TRANSFORMER PAD AND ENCLOSURE ARE DESIGNED FOR IN ACCORDANCE WITH AASHTO H-20-44 TRAFFIC BRIDGE LOADING USING 5,500 PSI [37.92MPa] COMPRESSIVE STRENGTH CONCRETE AND 60,000 PSI [413.2MPa] YIELD STRENGTH ASTM A-706 STEEL REINFORCEMENT PER CALC. #30207

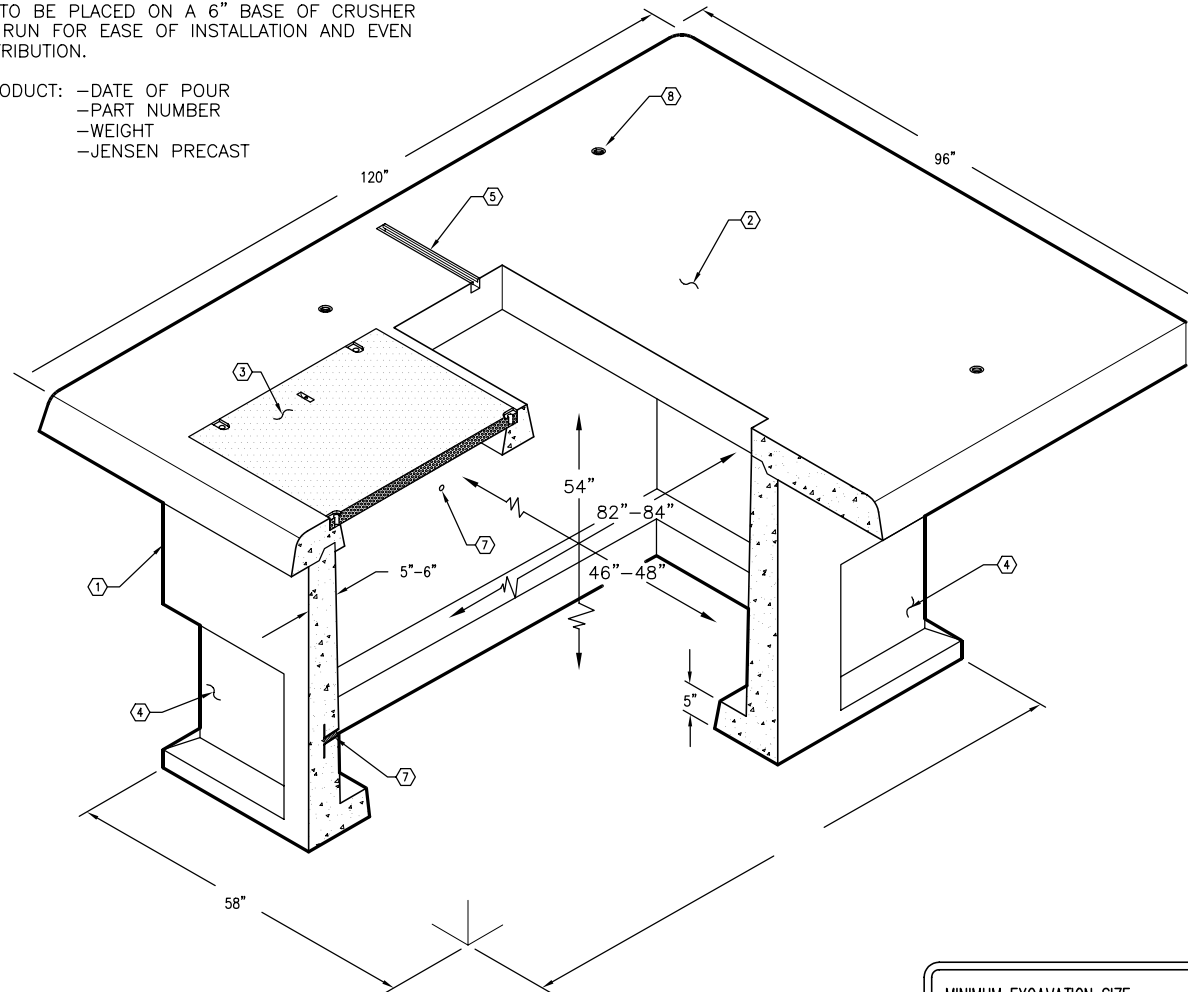
- COVER IS DESIGNED FOR PARKWAY LOADING PER CALC. #30448 @ 300 PSF.

- VAULT IS TO BE PLACED ON A 6" BASE OF CRUSHER CRUSHER RUN FOR EASE OF INSTALLATION AND EVEN LOAD DISTRIBUTION.

- MARK PRODUCT: -DATE OF POUR  
-PART NUMBER  
-WEIGHT  
-JENSEN PRECAST

### ORDERING INFORMATION:

K810-SB54-18 FOR ASSEMBLY AS SHOWN.  
APPROVED FOR CITY OF COLTON SPEC.  
TOTAL WT. OF ASSEMBLY IS 11,819 Lbs.



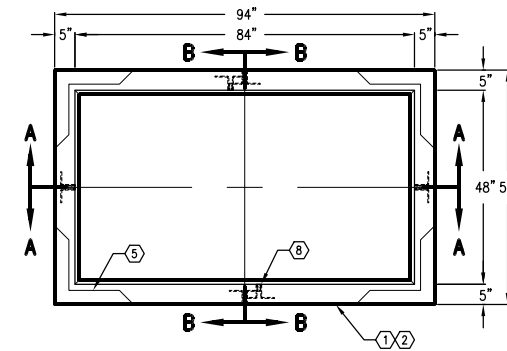
MINIMUM EXCAVATION SIZE:  
5'-10" x 8'-10" x DEPTH REQ'D.

**K810-SB54-18**

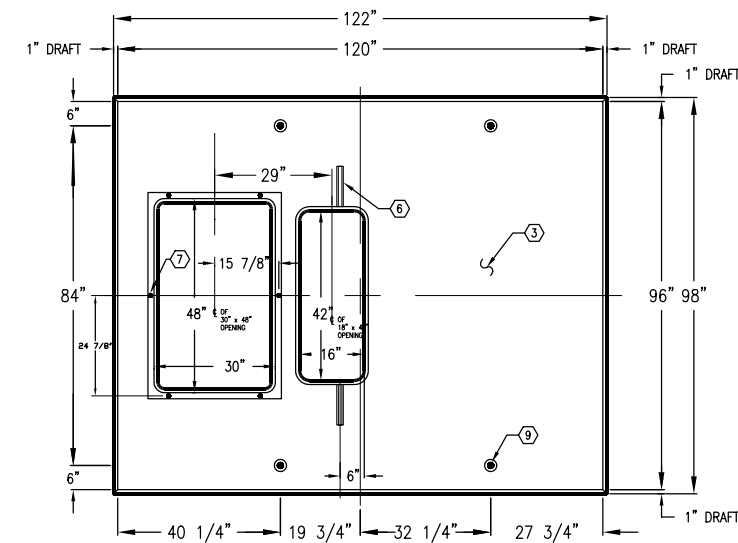
PER CITY OF COLTON SPECS- 405.03 11-18-94

**JENSEN PRECAST**

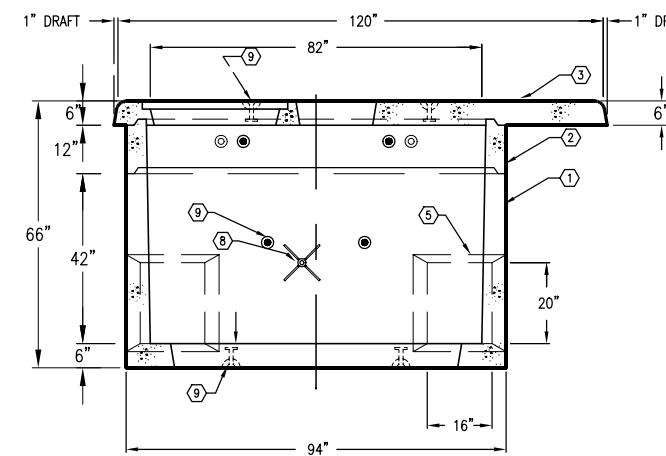
AUTOCAD REL. 14 (1553TPV54-CC2)



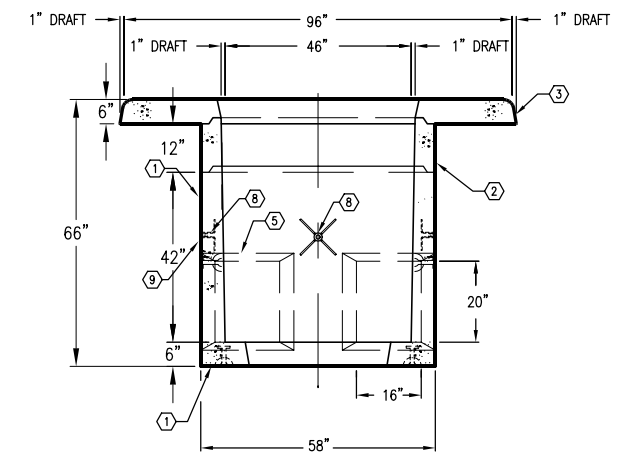
**PLAN VIEW  
W/O TRANSFORMER PAD**



**PLAN VIEW OF TRANSFORMER PAD**



**SECTION A-A**



**SECTION B-B**

**JENSEN PRECAST**

| # | DATE | DESCRIPTION | BY |
|---|------|-------------|----|
|   |      |             |    |

**K810-SB54-18**

PER CITY OF COLTON SPECS- 405.03 11-18-94