

8'-0" x 10'-0" COLTON SWITCH PAD W/5'-0" x 8'-6" ENCLOSURE x 4'-6" DEEP

NOTES:

- CONCRETE DESIGNED IN ACCORDANCE WITH AASHTO H-20-44 TRAFFIC LOADING USING 5,500 PSI [37.92 MPa] COMPRESSIVE STRENGTH CONCRETE AND 60,000 PSI [413.2 MPa] YIELD STRENGTH ASTM A-706 STEEL REINFORCEMENT PER CALCS.

- COVER IS DESIGNED FOR PARKWAY LOADING PER CALCS. #30448.
- ENCLOSURE TO BE PLACED ON A 6" BASE OF CRUSHER RUN FOR EVEN LOAD DISTRIBUTION AND EASE OF INSTALLATION.
- MARK PRODUCT: -DATE OF POUR
-PART NUMBER
-WEIGHT
-JENSEN PRECAST

THE FOLLOWING MATERIAL TO BE SHIPPED WITH EACH VAULT:
(a) 7/8" x 1 3/4" CONSEAL GASKET (45 FT. REQ'D.)

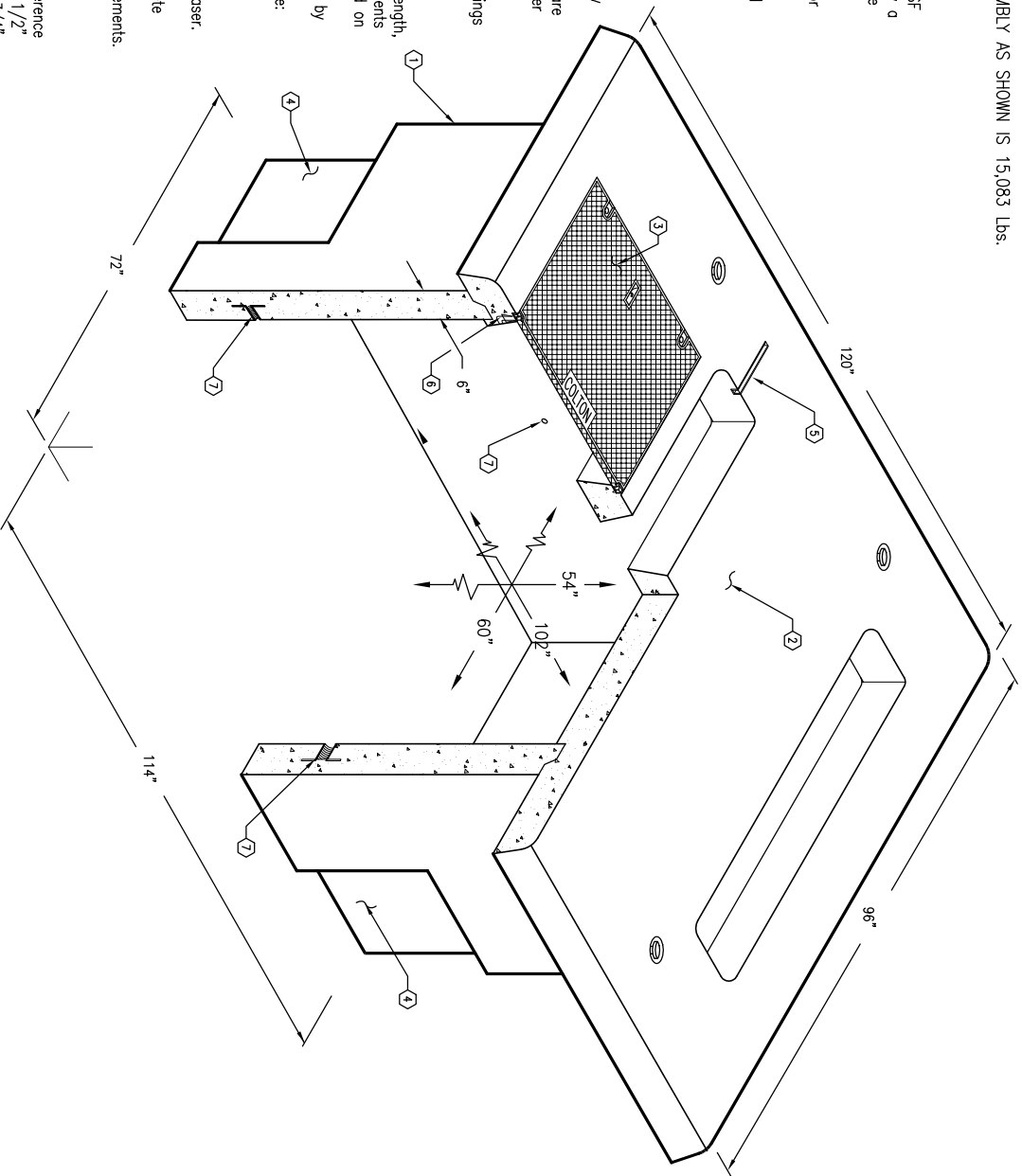
ORDERING INFORMATION:

K810-SB54-182 FOR ASSEMBLY AS SHOWN.
CITY OF COLTON SPECS
TOTAL WEIGHT OF ASSEMBLY AS SHOWN IS 15,083 Lbs.

GENERAL NOTES:

1. Minimum soil bearing capacity is hereby assumed to be 2000 PSF unless otherwise documented by a geotechnical report that shall be provided to Jensen Precast by the end user. Jensen Precast shall not be held responsible for the soil bearing capacity.
2. Handholes, Meter Boxes etc. will be as per Jensen installation procedures.
3. Structural modification to the Jensen line of products is not permitted without prior written approval from Jensen Engineering Department.
4. Do not scale the drawings, verify all dimensions including rough openings, if any discrepancies are found, notify the Jensen Engineer immediately.
5. The Jensen Engineer will interpret the intent of the drawings in case of possible conflict or discrepancy.
6. Permissible Variations:
Dimensional Tolerances - The length, width, height, or dia. measurements of the structure when measured on the inside surfaces shall not deviate from design dimensions by more than the following:
Dimensions: Tolerance:
0 to 5 Feet 1/4"
5 to 10 Feet 3/8"
10 to 20 Feet as agreed upon between the supplier and purchaser.
Squarness Tolerance:
he inside of the precast concrete component shall be square as determined by diagonal measurements. The difference between such measurements shall not exceed the following:
Measured Length: Allowable Difference
0 to 10 Feet 1/2"
10 to 20 Feet 3/4"
20 Feet and over as agreed upon between the supplier and purchaser.

1. PB586-154-18, 54" BOTTOM SECTION, WT. 9,800 Lbs.
2. PD96120-16-182, 6" TRANSFORMER PAD, WT. 5,000 Lbs.
3. 12-20-28, "COLTON ELECTRIC" RPM 1 PIECE PARKWAY COVER WITH (6) 1/2" X 2 1/2" STAINLESS STEEL PENTA-HEAD BOLTS WITH CAPTIVE WASHERS. WT. 109 Lbs.
4. 16" x 20" KNOCKOUT x 4 1/2" DEEP. DRAFT AS FOLLOWS: T=2", S1=S2=4 1/2", B=2". LOCATE AS FOLLOWS:
BOTTOM SECTION (8) SHELL MTD.
1 5/8" x 1 5/8" GALVANIZED UNISTRUT x 14" LONG. LOCATE AS FOLLOWS: TRANSFORMER PAD (2) TABLE MTD.
o 1/2" P-35-T O.B. INSERT W/CLEAN OUT HOLE. LOCATE AS FOLLOWS: TRANSFORMER PAD (6) TABLE MTD.
5. X 1" GALVANIZED COIL THREAD INSERT. LOCATE AS FOLLOWS: LOWER SECTION (4) CORE MTD.

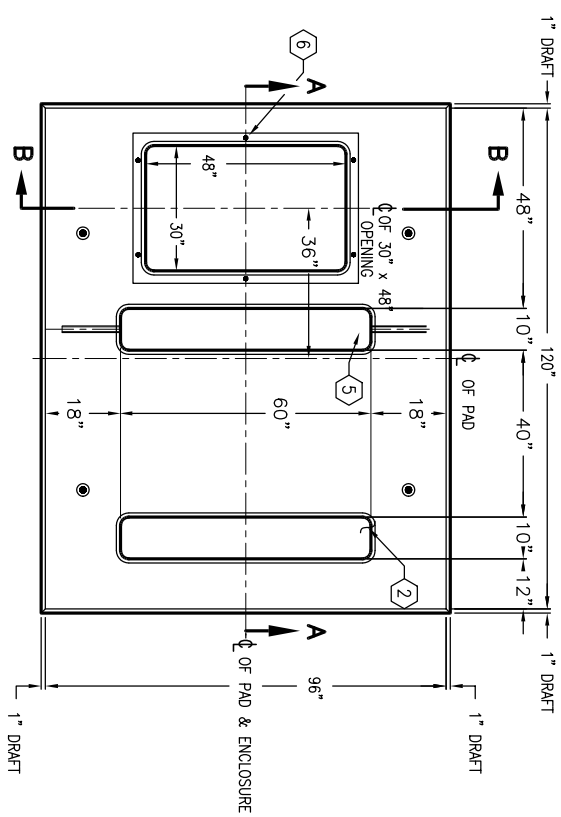


MINIMUM EXCAVATION SIZE:
7'-0" x 10'-6" x DEPTH REQ'D.

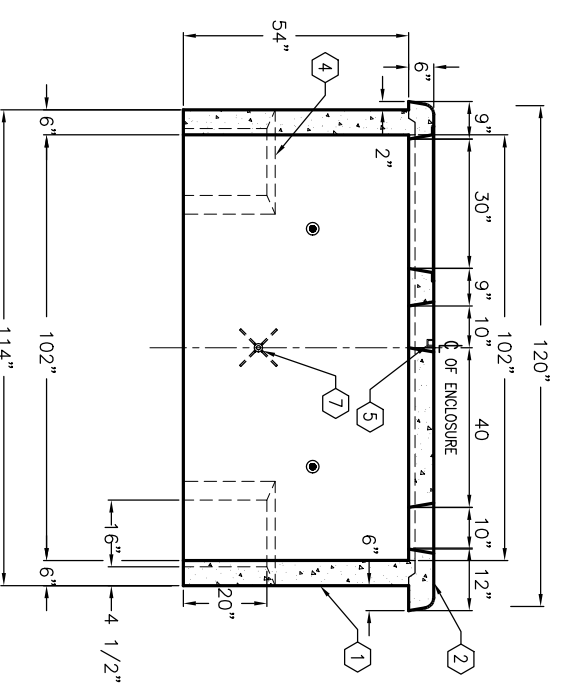
K810-SB54-182



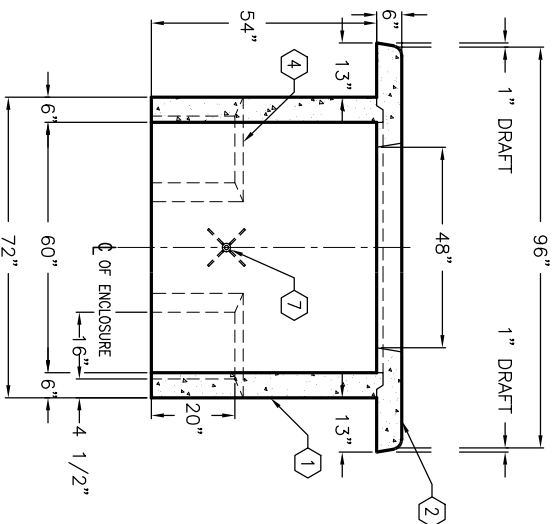
AUTOCAD REL. 14



PLAN VIEW OF TRANSFORMER PAD



SECTION A-A



SECTION B-B



K810-SB54-182

#	DATE	DESCRIPTION	BY

PER CITY OF COLTON SPEC- 405.05

03-01-02