

# 6'-0" x 8'-0" TRANSFORMER PAD W/4'-0" x 7'-0" ENCLOSURE x 4'-6" DEEP

## MATERIAL LIST - K68-SB54-18

ITEM	PART NO.	DESCRIPTION	CAGE NO./LOCATE	WEIGHT/MOUNT
1	SB47-B42-11	42" BOTTOM SECTION	CG-SB47-B42-11 (30)	6400 lbs
2	SB47-R12	12" EXTENSION SECTION	CG-SB47-R12	1,920 lbs
3	PD7296-T6-18	6" TRANSFORMER PAD	CG-PD7296-T6-18	2,588 lbs
4	SC3048-PGV	(1) SC3048-PGV PARKWAY GALVANIZED STEEL COVER (6) 1/2" x 2-1/2" S.S. PENTA HEAD BOLTS		109 lbs
5	KNOCKOUT	16" x 16" K.O x 20" CORNER KNOCKOUT x 3 1/2" DEEP DRAFT T=2", S1=2", S2=2", B=0	INTERMEDIATE SECTION	(4) SHELL
6	55-21-010	(2) 1-5/8" x 1-5/8" GALV 12 GA. STRUT x 10" LONG	TRANSFORMER PAD	(2) TABLE
7	55-10-416	1/2" DIA. P-35T OPEN BTM INSERT W/ CLEAN OUT HOLE	TRANSFORMER PAD	(6) FRAME
8	55-10-830	1" x 3 1/2" LONG COIL INSERT	INTERMEDIATE SECTION	(4) CORE
9	55-20-203	2 TON 3-3/8" GALVANIZED RISS FOR HANDLING	TRANSFORMER PAD BOTTOM SECTION	(4) TABLE (4) CORE & (4) SHELL
10	20-40-COL	NAME PLATE MARKED "COLTON ELECTRIC"		

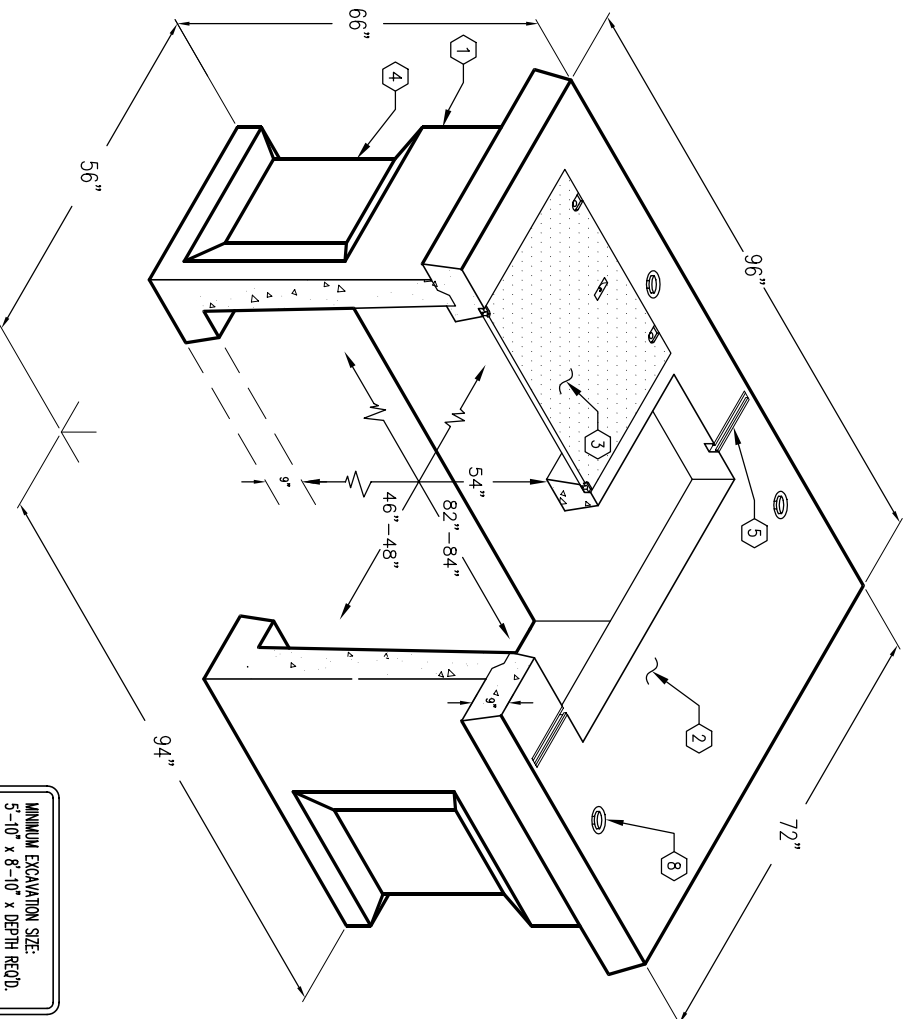
### NOTES:

- TRANSFORMER PAD AND ENCLOSURE DESIGNED IN ACCORDANCE WITH ASHTO H-20-44 BRIDGE LOADING USING 5,500 PSI [37.92MPa] COMPRESSIVE STRENGTH CONCRETE AND 60,000 PSI [413.2MPa] YIELD STRENGTH ASTM A-706 STEEL REINFORCEMENT PER CALC. #30207.
- COVER IS DESIGNED FOR PARKWAY LOADING PER CALCS. # 30448 @ 300 PSF.
- VAULT IS TO BE PLACED ON A 6" BASE OF CRUSHER RUN FOR EASE OF INSTALLATION AND EVEN LOAD DISTRIBUTION.
- MARK PRODUCT: -DATE OF POUR  
-PART NUMBER  
-WEIGHT  
-JENSEN PRECAST

THE FOLLOWING MATERIAL TO BE SHIPPED WITH EACH VAULT:  
(0) 7/8" x 1 3/4" CONSEAL GASKET (45 F. REC'D.)

### ORDERING INFORMATION:

K68-SB54-18 FOR ASSEMBLY AS SHOWN.  
APPROVED FOR CITY OF COLTON SPEC.  
TOTAL WT. OF ASSEMBLY IS 9,414 Lbs.



MINIMUM EXCAVATION SIZE:  
5'-10" x 8'-10" x DEPTH REQD.

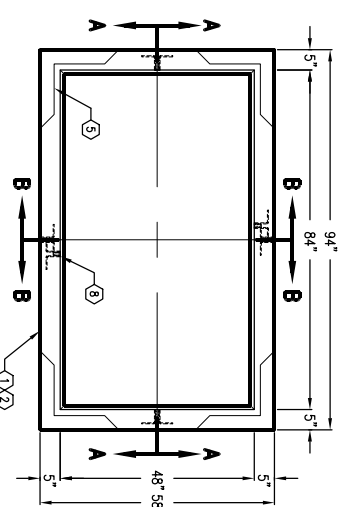
**K68-SB54-18**

**JENSEN PRECAST**

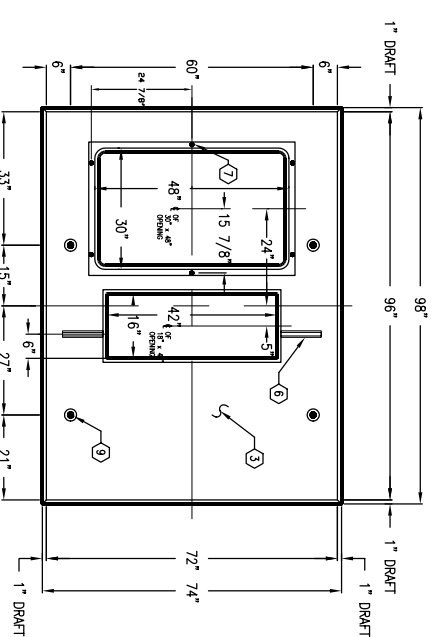
AUTOCAD REL. 14 (15507M64-CC1)

PER CITY OF COLTON SPEC- 405.02

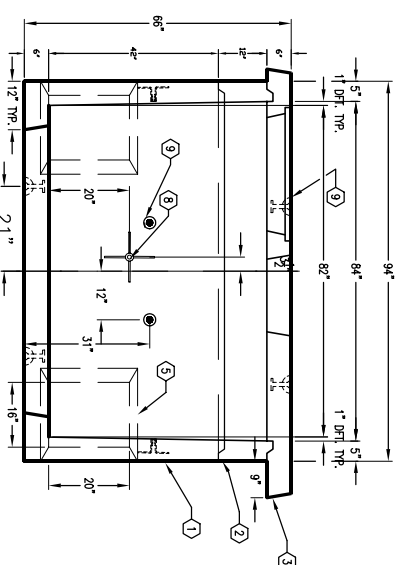
11-23-88



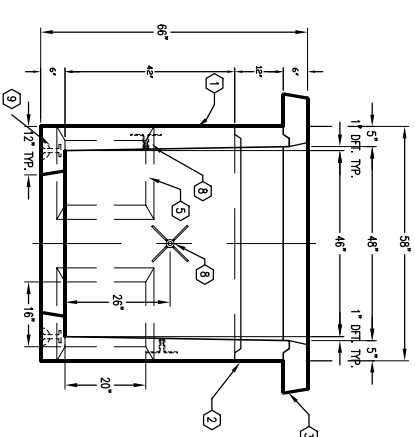
PLAN VIEW  
W/O TRANSFORMER PAD



PLAN VIEW OF TRANSFORMER PAD



SECTION A-A



SECTION B-B

**JENSEN PRECAST**

#	DATE	DESCRIPTION	BY

**K68-SB54-18**

PER CITY OF COLTON SPEC- 405.02

11-23-88