

# 5'-0" X 8'-6" COLTON PARKWAY PULL BOX X 66" DEEP

**NOTES:**

- DESIGNED IN ACCORDANCE WITH AASHTO H-20-44 BRIDGE LOADING USING 5,500 PSI COMPRESSIVE STRENGTH CONCRETE AND 60,000 PSI YIELD STRENGTH GRADE 60 A-706 REINFORCEMENT PER CALC. #31584
- COVER DESIGNED FOR PARKWAY LOADING.
- VAULT TO BE PLACED ON A MIN. 6" BASE OF CRUSHER RUN FOR EASE OF INSTALLATION AND EVEN LOAD DISTRIBUTION.
- MARK PRODUCT: -DATE OF POUR  
-PART NUMBER  
-WEIGHT  
-JENSEN PRECAST

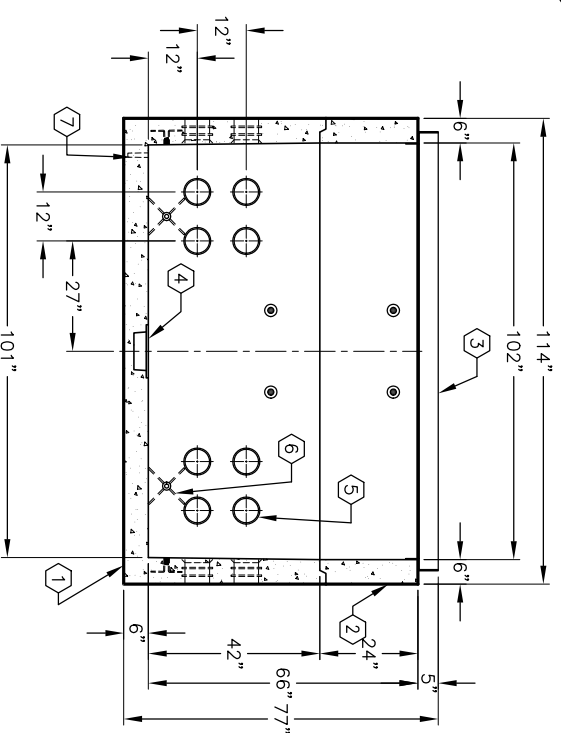
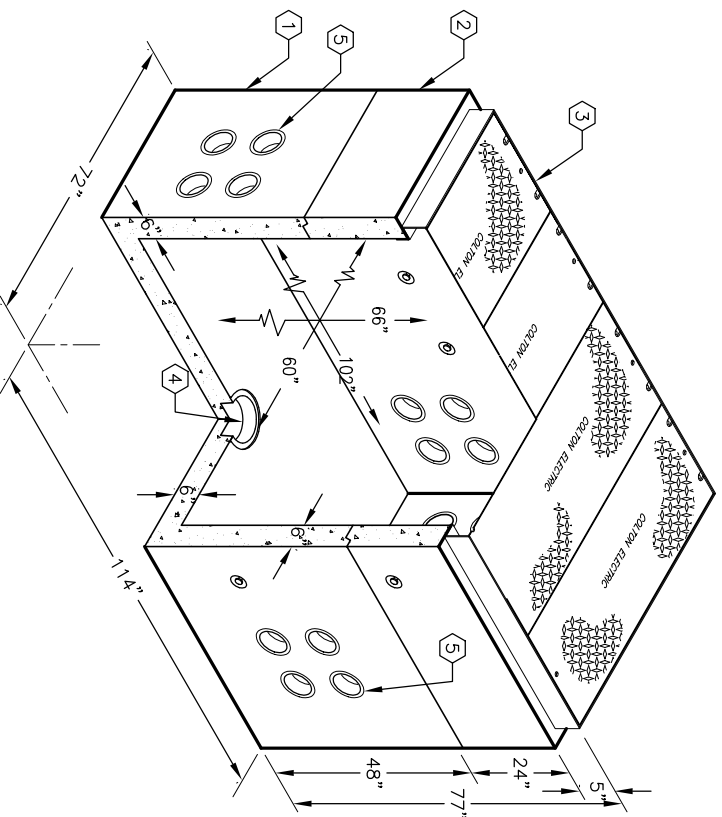
**ORDERING INFORMATION:**

K586-FP66-18P FOR ASSEMBLY AS SHOWN.  
PER CITY OF COLTON SPEC.  
TOTAL WEIGHT OF ASSEMBLY IS 17,768 Lbs.

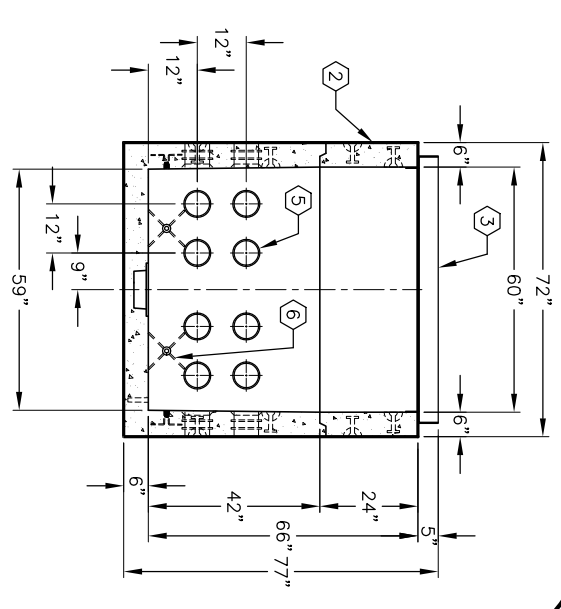
**GENERAL NOTES:**

1. Minimum soil bearing capacity is hereby assumed to be 2000 PSF unless otherwise documented by a geotechnical report that shall be provided to Jensen Precast by the end user. Jensen Precast shall not be held responsible for the soil bearing capacity.
2. Installation of Manholes, Vaults, Handholes, Meter Boxes etc. will be as per Jensen installation procedures.
3. Structural modification to the Jensen line of products is not permitted without prior written approval from Jensen Engineering Department.
4. Do not scale the drawings, verify all dimensions including rough openings, if any discrepancies are found, notify the Jensen Engineer immediately.
5. The Jensen Engineer will interpret the intent of the drawings in case of possible conflict or discrepancy.
6. Permissible Variations: - Dimensional Tolerances: - The length, width, height, or dia. measurements of the structure when measured on the inside surfaces shall not deviate from design dimensions by more than the following:  
Dimensions: Tolerance:  
0 to 5 Feet 1/4"  
5 to 10 Feet 3/8"  
10 to 20 Feet as agreed upon between the supplier and purchaser.  
Squariness Tolerance: he inside of the precast concrete component shall be square as determined by diagonal measurements. The difference between such measurements shall not exceed the following:  
Measured Length: Allowable Difference  
0 to 10 Feet 1/2"  
10 to 20 Feet 3/4"  
20 Feet and over as agreed upon between the supplier and purchaser.
- 7.

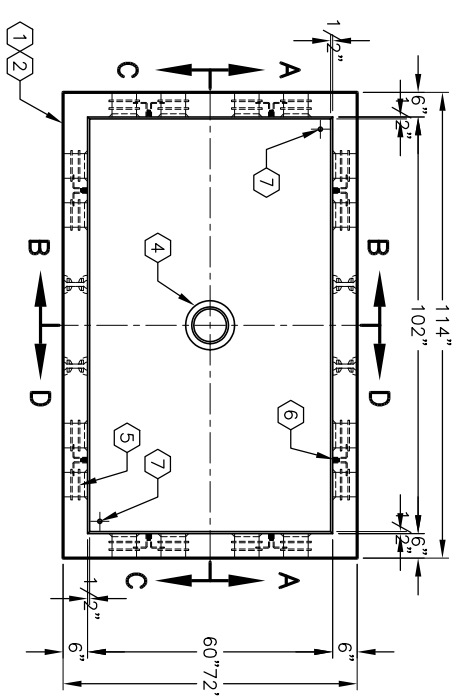
1. PB586-B42-18, 42" BOTTOM SECTION. WT. 11,888 Lbs.
2. PB586-T24-18, 24" TOP SECTION. WT. 4,350 Lbs.
3. CA586-PG-18, (4) PIECE PARKWAY GALV. COVER & FRAME ASMB W/ADJUSTMENT BOLTS, (12) 1/2" STAINLESS STEEL PENTA HEAD BOLTS x 2 1/2" GALV. TAMPER PLATE BELOW LIFT HOLES, MARKED "COLTON ELECTRIC" WT. 1,530 Lbs.
4. 8" x 9" DIA. SUMP x 5" DEEP W/GRATE & RECESS. LOCATE AS FOLLOWS: BOTTOM SECTION (1) CORE MTD.
5. (1) CORE MTD.
6. 6" DIA. TERMINATORS (GREY). LOCATE AS FOLLOWS: BOTTOM SECTION (32) SHELL MTD.
7. 1" DIA. COIL THRD. INSERT. LOCATE AS FOLLOWS: BOTTOM SECTION (6) CORE MTD.
- 1" DIA. x 5" DEEP GROUND ROD KNOCKOUT. LOCATE AS FOLLOWS: BOTTOM SECTION (2) CORE MTD.



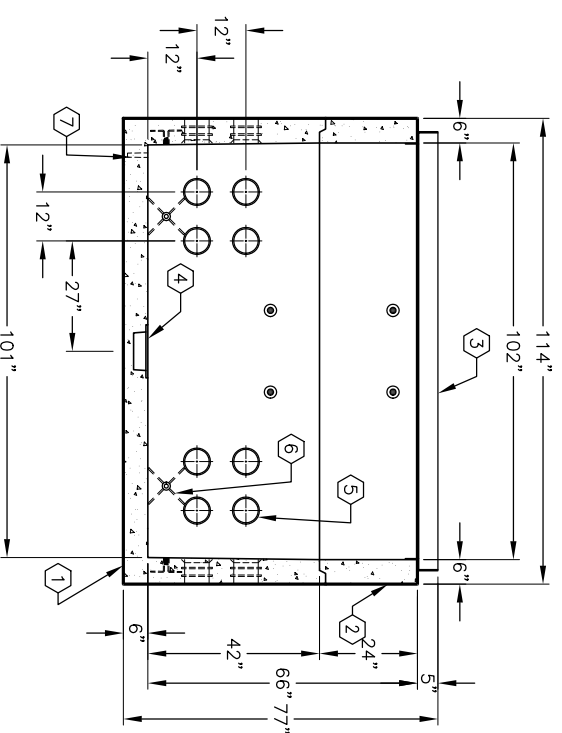
SECTION A-A



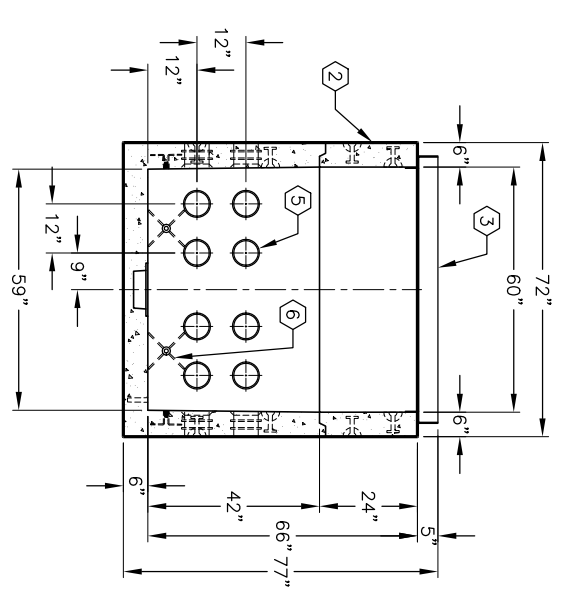
SECTION B-B



PLAN VIEW



SECTION C-C



SECTION D-D



AUTOCAD REL. 14

K586-FP66-18P

PER CITY OF COLTON SPECS-404.04

03-01-02



#	DATE	DESCRIPTION	BY

K586-FP66-18P

PER CITY OF COLTON SPECS-404.04

03-01-02