

# 4'-0" x 7'-0" COLTON TRANSFORMER PAD AND VAULT x 54" DEEP

**NOTES:**

- VAULT DESIGNED IN ACCORDANCE WITH AASHTO H-20-44 TRAFFIC BRIDGE LOADING USING 5,500 PSI COMPRESSIVE STRENGTH CONCRETE AT 28 DAYS AND 60,000 PSI YIELD STRENGTH ASTM A-706 STEEL REINFORCEMENT PER CALCS 30615.
- VAULT TO BE PLACED ON A MIN. 6" BASE OF CRUSHER RUN FOR EASE OF INSTALLATION AND EVEN LOAD DISTRIBUTION.
- MARK PRODUCT:
  - POUR DATE
  - WEIGHT
  - PART #
  - JENSEN PRECAST

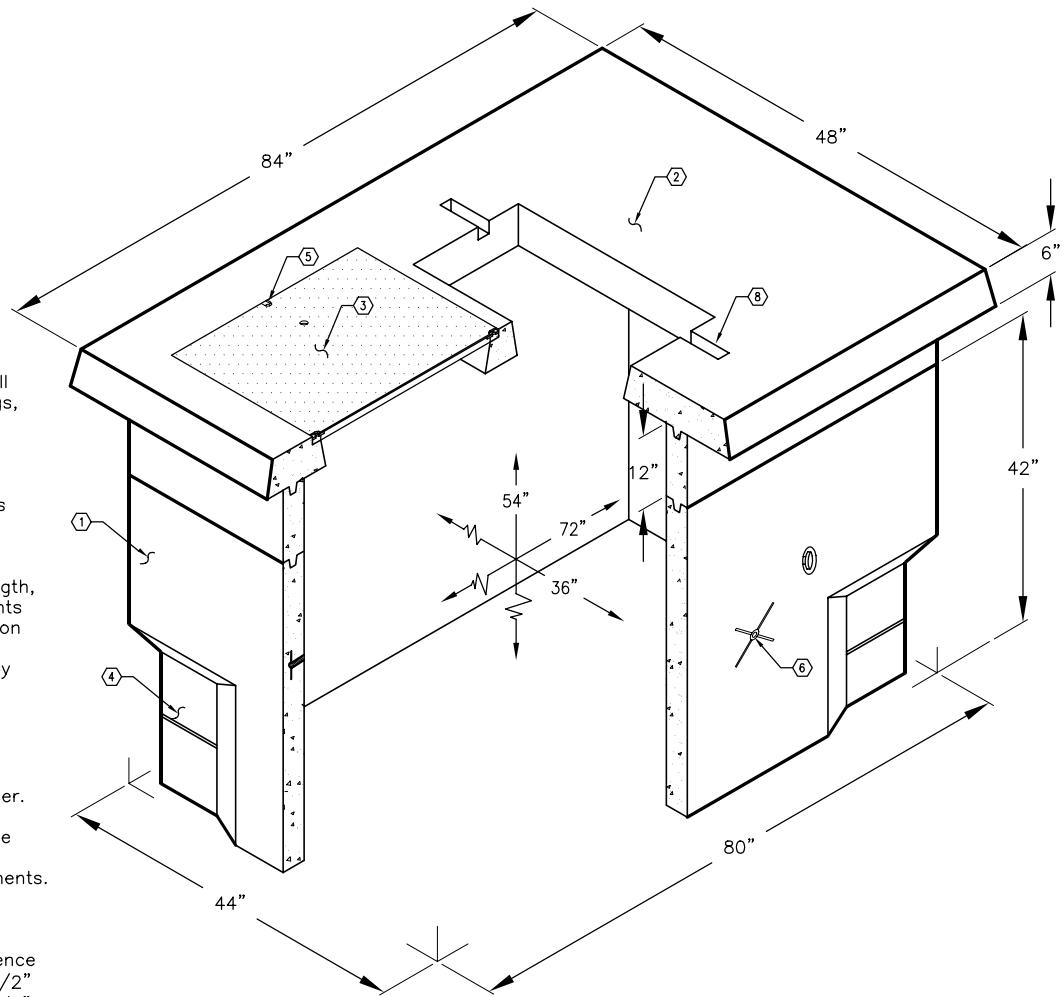
1. SB3672-L42-21, 42" LOWER SECTION. WT. 3,070 Lbs.
- 1a. PB3672-R12, 12" EXTENSION SECTION.
2. PD4884-T6-18, 6" TRANSFORMER PAD WITH ANGLE FRAME CAST-IN (F2436-PB-ANG).. WT. 1,430 LBS.
3. SC2436-PGV PARKWAY GALVANIZED STEEL COVER w/(4) 1/2" x 1 1/2" S.S. PENTA-HEAD BOLTS
4. 16" x 16" CORNER KNOCKOUT x 2" DEEP. DRAFT AS FOLLOWS: T=2", S1=2", S2=2", B=0. LOCATE AS FOLLOWS: LOWER SECTION (4) SHELL MTD.
5. AS FOLLOWS: TRANSFORMER PAD (4) FRAME MTD.
6. X 1/2" P-35-T INSERT W/CLEAN-OUTS LOCATE 1" COIL THR'D. INSERT. LOCATE AS FOLLOWS:
8. 1 5/8" x 1 5/8" GALV. UNISTRUT x 6" LONG 2 REQ'D TABLE MTD. TRANS. PAD.
9. (1) (20-40-COL) NAME PLATE MARKED "COLTON ELECTRIC"

**ORDERING INFORMATION:**

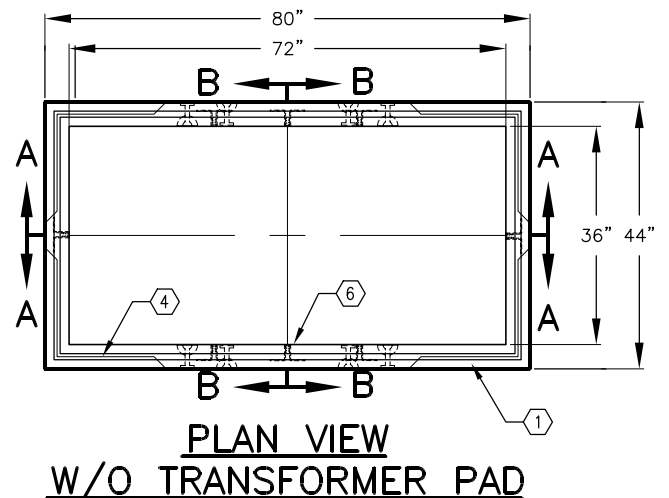
K3672-SB54-18 FOR ASSEMBLY AS SHOWN.  
 APPROVED FOR CITY OF COLTON SPEC.  
 TOTAL WT. OF ASSEMBLY 5,551 Lbs.

**GENERAL NOTES:**

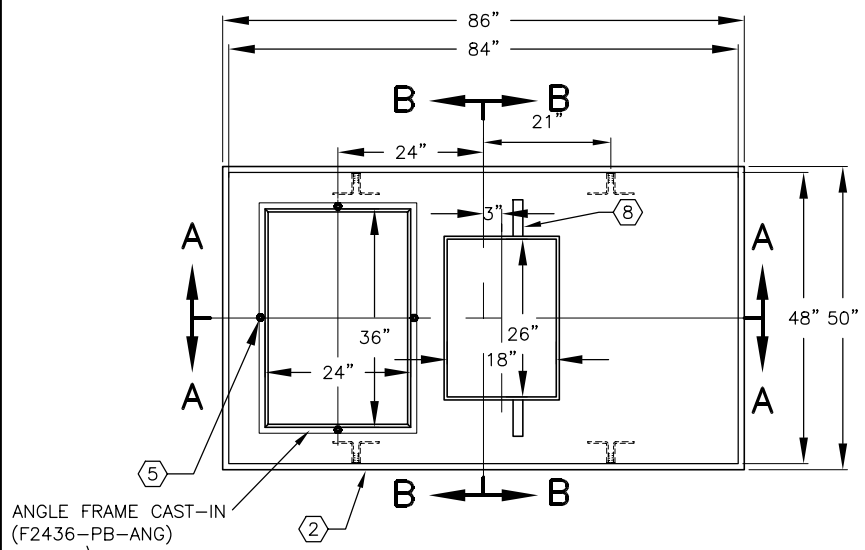
1. Minimum soil bearing capacity is hereby assumed to be 2000 PSF unless otherwise documented by a geotechnical report that shall be provided to Jensen Precast by the end user. Jensen Precast shall not be held responsible for the soil bearing capacity.
2. Installation of Manholes, Vaults, Handholes, Meter Boxes etc. will be as per Jensen installation procedures.
3. Structural modification to the Jensen line of products is not permitted without prior written approval from Jensen Engineering Department.
4. Do not scale the drawings, verify all dimensions including rough openings, if any discrepancies are found, notify the Jensen Engineer immediately.
5. The Jensen Engineer will interpret the intent of the drawings in case of possible conflict or discrepancy.
6. Permissible Variations:
  - Dimensional Tolerances - The length, width, height, or dia. measurements of the structure when measured on the inside surfaces shall not deviate from design dimensions by more than the following:
  - Dimensions: Tolerance:
  - 0 to 5 Feet 1/4"
  - 5 to 10 Feet 3/8"
  - 10 to 20 Feet as agreed upon between the supplier and purchaser.
  - Squareness Tolerance: The inside of the precast concrete component shall be square as determined by diagonal measurements. The difference between such measurements shall not exceed the following:
  - Measured Length: Allowable Difference
  - 0 to 10 Feet 1/2"
  - 10 to 20 Feet 3/4"
  - 20 Feet and over as agreed upon between the supplier and purchaser.



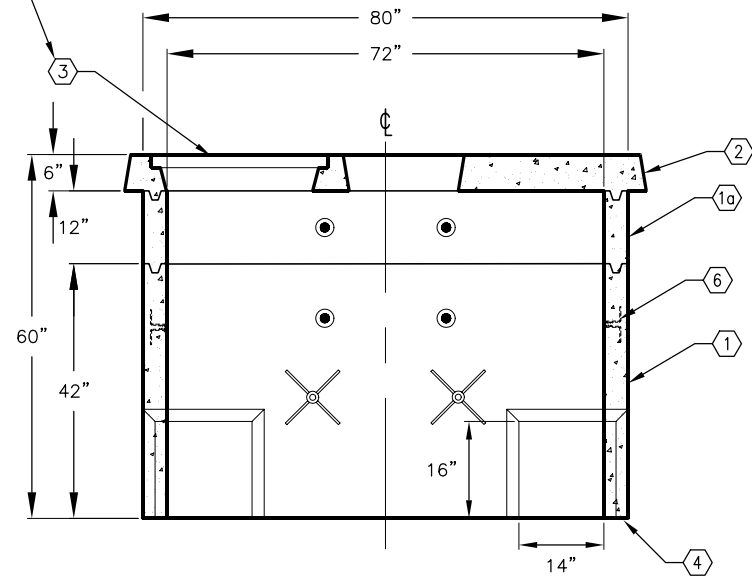
MINIMUM EXCAVATION SIZE:  
 4'-8" x 6'-8" x DEPTH REQ'D.



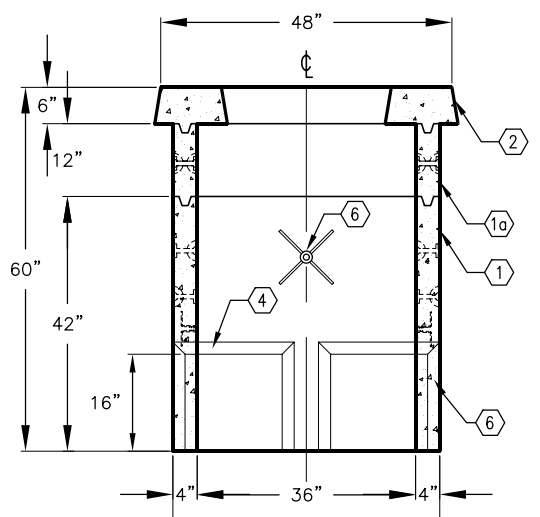
**PLAN VIEW  
 W/O TRANSFORMER PAD**



**PLAN VIEW OF TRANSFORMER PAD**



**SECTION A-A**



**SECTION B-B**



AUTOCAD REL. 14

**K3672-SB54-18**

PER CITY OF COLTON SPEC. 03-01-02



#	DATE	DESCRIPTION	BY

**K3672-SB54-18**

PER CITY OF COLTON SPEC. 03-01-02