

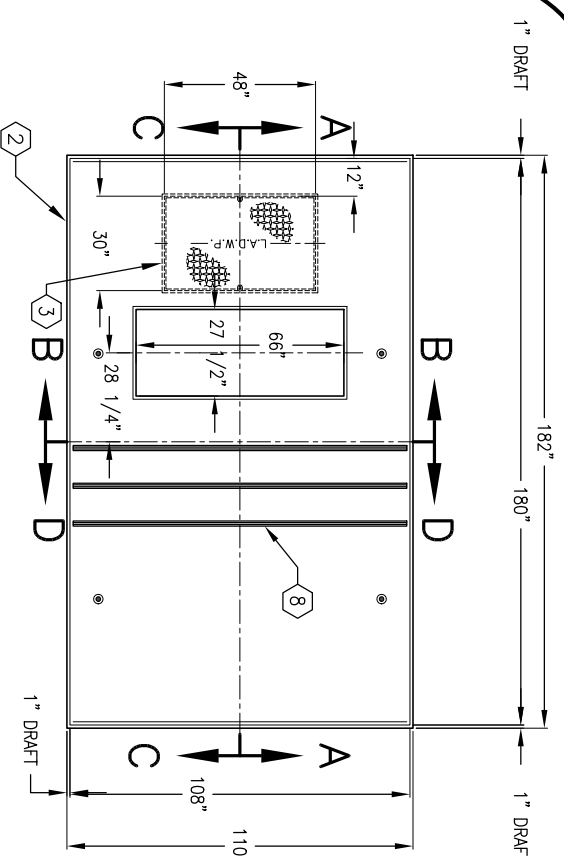
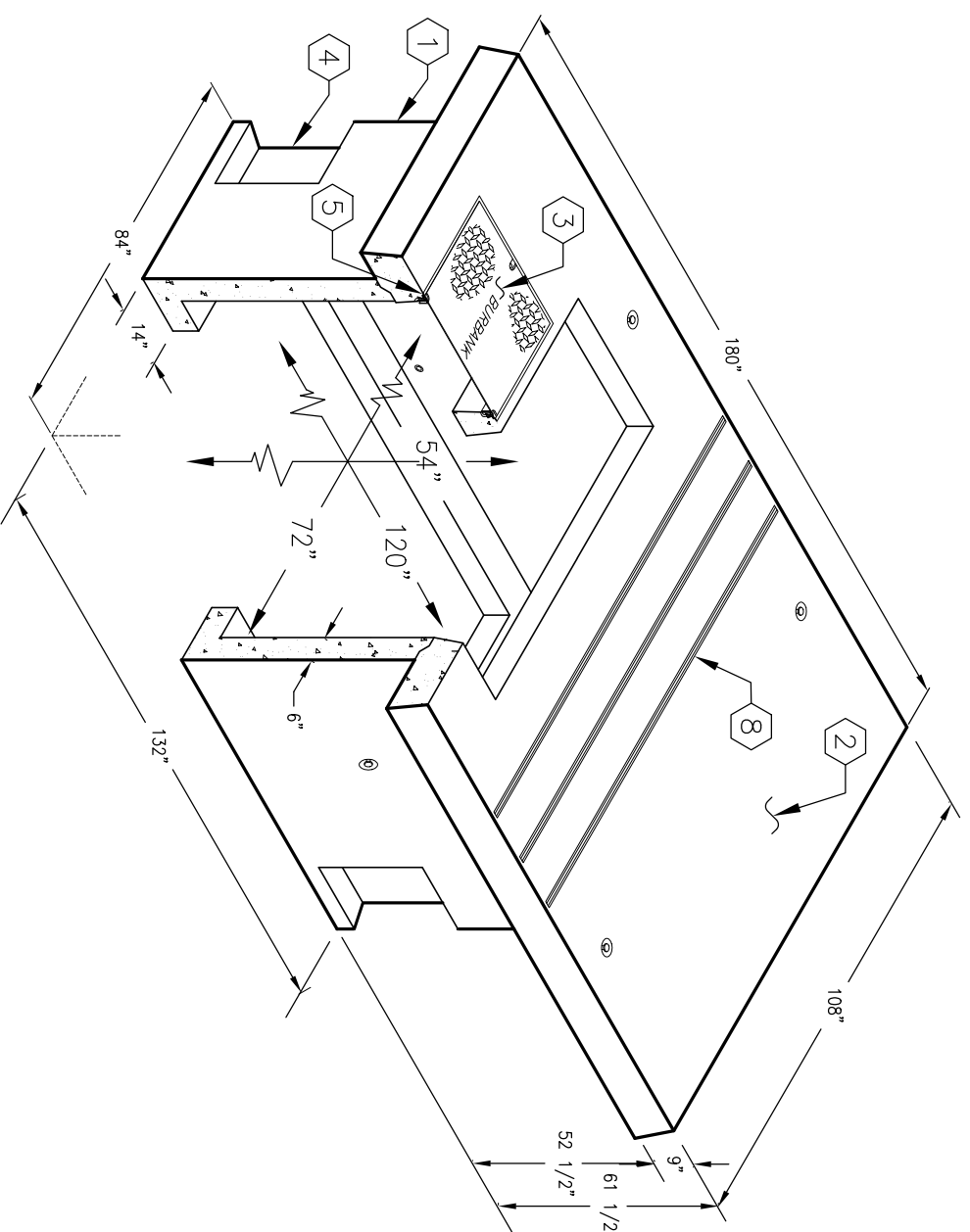
# 9'-0" x 15'-0" burbank TRANSFORMER PAD w/6'-0" x 10'-0" VAULT x 48" DEEP

**NOTES:**

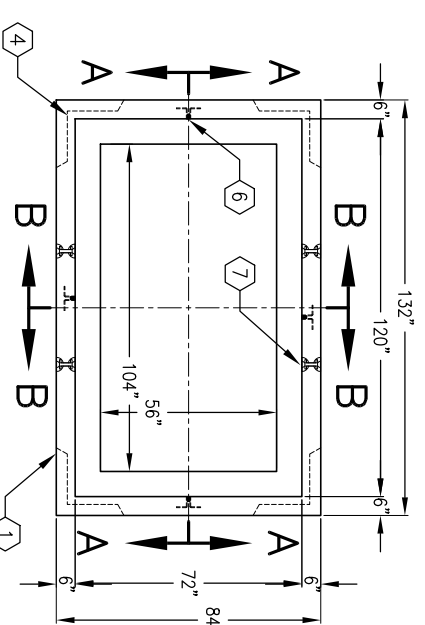
- VAULT DESIGNED IN ACCORDANCE WITH L.A.D.W.P. SPEC. C721 USING 5,500 PSI [37.92MPa] COMPRESSIVE STRENGTH CONCRETE AT 28 DAYS AND 60,000 PSI [413.2MPa] YIELD STRENGTH ASTM A-706 STEEL REINFORCEMENT PER CALCS. #30616.
- VAULT TO BE PLACED ON A MIN. 6" BASE OF CRUSHER RUN FOR EASE OF INSTALLATION AND EVEN LOAD DISTRIBUTION.
- CONCRETE MIX USED IN POURING THIS PRODUCT SHALL USE FLY ASH AS AN ADMIXTURE.
- EACH CONCRETE SECTION SHALL BE MARKED ON THE INSIDE & OUTSIDE WITH "JENSEN PRECAST", AND THE DATE OF POUR.
1. SB610-L48-12, 48" LOWER SECTION, WT. 12,600 Lbs.
  2. PD108180-T9-17, 9" TRANSFORMER PAD, WT. 12,185 Lbs.
  3. SC3048-PAGV-17, SINGLE PIECE COVER w/(2) 1/2" x 1 1/2" S.S.H.H. BOLTS, (2) PICK HOLES, GALV. FINISH, MARK 'BURBANK ELECTRIC', WT. 129 Lbs.
  4. 16" x 26" CORNER KNOCKOUT x 3 1/2" DEEP. DRAFT AS FOLLOWS: T=2", S1= 3 1/2", S2=2", B=2". LOCATE AS FOLLOWS: LOWER SECTION (4) SHELL MTD.
  5. 1/2" P-35-T INSERT W/CLEAN-OUTS (2 REQ'D.) LOCATE AS FOLLOWS: TRANSFORMER PAD (2) TABLE MTD.
  6. 1" COIL THRD. INSERT. LOCATE AS FOLLOWS: LOWER SECTION (6) CORE MTD.
  7. 1 5/8" x 1 5/8" x 12 GAUGE STRUT x 106" LONG (UNISTRUT P3200 SERIES) (3 REQ'D.).
  8. 1 5/8" x 1 5/8" x 12 GAUGE STRUT x 106" LONG (UNISTRUT P3200 SERIES) (3 REQ'D.).
  9. 1/2" DIA. COIL INSERT. BOTTOM SECTION (4) CORE MTD.

**ORDERING INFORMATION:**

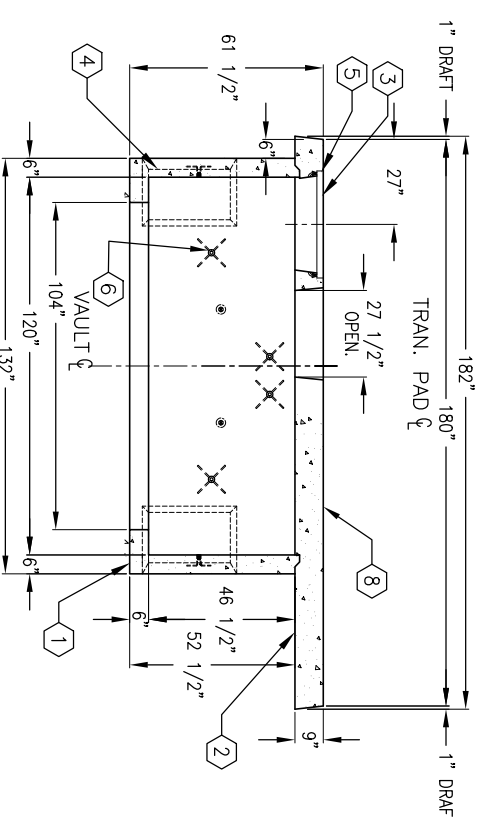
K915-SB48-17 FOR ASSEMBLY AS SHOWN.  
 APPROVED FOR CITY OF BURBANK.  
 TOTAL WT. OF ASSEMBLY 24,785 Lbs.



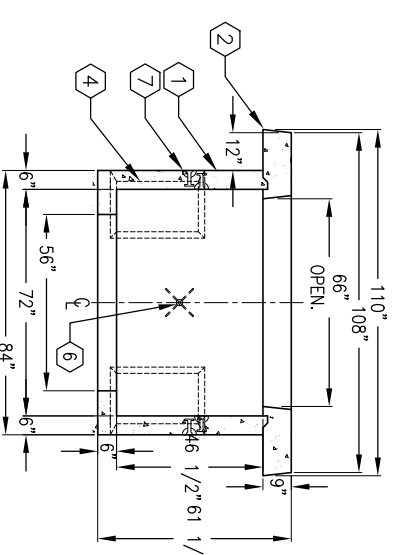
**PLAN VIEW OF TRANSFORMER PAD**



**PLAN VIEW, VAULT ONLY**



**SECTION A-A**



**SECTION B-B**

MINIMUM EXCAVATION SIZE:  
 8'-0" x 12'-0" x DEPTH REQ'D.

**K915-SB48-17**

PER CITY OF BURBANK 03-01-02



AUTOCAD REL. 14



**K915-SB48-17**

PER CITY OF BURBANK 03-01-02

#	DATE	DESCRIPTION	BY