

8'-0" x 10'-0" BURBANK TRANSFORMER PAD W/4'-0" x 7'-0" ENCLOSURE x 42" DEEP

NOTES:

- TRANSFORMER PAD AND ENCLOSURE ARE DESIGNED FOR PARKWAY LOADING PER CALCS. #11654 USING 5,500 PSI. COMPRESSIVE STRENGTH CONCRETE.
- COVER IS DESIGNED FOR PARKWAY LOADING.
- VAULT TO BE PLACED ON A MIN. 6" BASE OF CRUSHER RUN FOR EVEN LOAD DISTRIBUTION AND EASE OF INSTALLATION.
- PAD AND ENCLOSURE DESIGNED FOR 7,500 LB. (TRANSFORMER) VERTICAL DEAD LOAD.

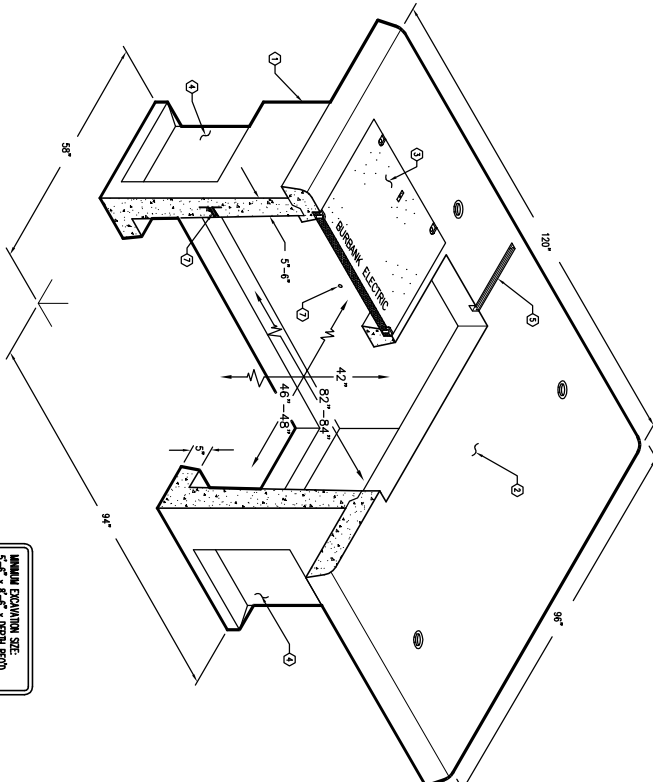
THE FOLLOWING MATERIAL TO BE SHIPPED WITH EACH VAULT:
(0) 7/8" x 1 3/4" CONSOLE GASKET (45 FT. REQ'D.)

ORDERING INFORMATION:

K810-SB42-17 FOR ASSEMBLY AS SHOWN - 330P
K810-SB42-17 FOR CONCRETE PARTS ONLY - 330P
TOTAL WEIGHT OF ASSEMBLY AS SHOWN IS 11,349 Lbs.

GENERAL NOTES:

1. Minimum soil bearing capacity is hereby assumed to be 2000 PSF unless otherwise documented by a geotechnical engineer. The user is responsible for providing the soil bearing capacity to the end user. Jensen Precast shall not be held responsible for the soil bearing capacity.
2. Installation of Burbank Vaults will be as per Jensen installation procedures.
3. Structural modification to the Jensen line of products is not permitted without prior written approval from the Engineering Department.
4. Do not scale the drawings, verify all dimensions including rough openings, if any discrepancies are found, notify the Jensen Engineer.
5. The Jensen Engineer will interpret the intent of the drawings in case of possible conflict or discrepancy.
6. Permissible Variations: - The length, width, height, or dia. measurements of the structure when measured on the inside surfaces shall not deviate from design dimensions by more than the following:
 - Tolerance:
 - 0 to 5 Feet: 1/4"
 - 5 to 10 Feet: 3/8"
 - 10 to 20 Feet as agreed upon: 1/2"
 - 20 feet and over: 3/4"
7. Squaresness Tolerance: The inside of the precast concrete components shall be squares as determined by the square as compared to the square measurements. The difference between such measurements shall not exceed the following:
 - Measured Length: Allowable Difference 0 to 10 Feet: 1/2"
 - 10 to 20 Feet as agreed upon: 3/4"
 - 20 feet and over: 1/2"



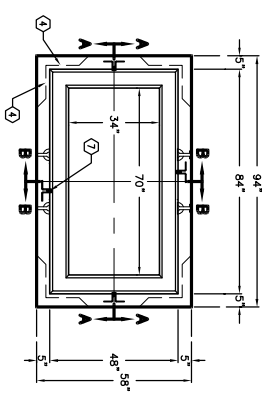
MINIMUM EXPOSURE SIZE:
5'-6" x 6'-6" x 42" DEPTH (REQ'D.)

K810-SB42-17

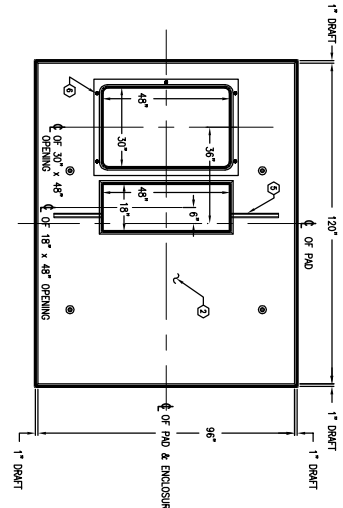
PER DET. OF BURBANK SPEC. 5-330P 03-01-02



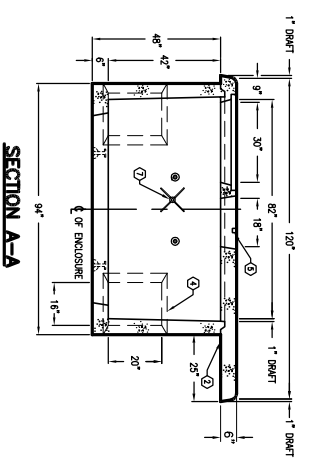
AMPCO, INC. 14



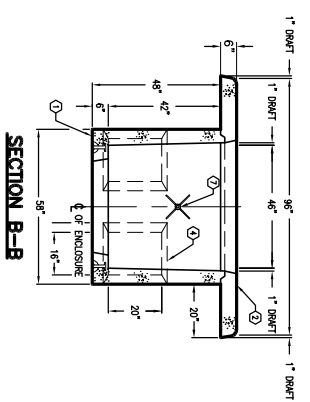
PLAN VIEW W/O TRANSFORMER PAD



PLAN VIEW OF TRANSFORMER PAD



SECTION A-A



SECTION B-B



PER DET. OF BURBANK SPEC. 5-330P 03-01-02

K810-SB42-17

#	DATE	DESCRIPTION	BY