

# 4'-0" x 4'-6" TRANSFORMER PAD x 4" THICK W/ PULL BOX

| MATERIAL LIST |               |  |                     |               |
|---------------|---------------|--|---------------------|---------------|
| ITEM          | PART NO.      | DESCRIPTION                            | CAGE NO. / LOCATE   | WEIGHT/ MOUNT |
| 1             | PD4854-T4-11  | TRANSFORMER PAD                        | CG-PD4854-T4-11(23) | 743 lbs       |
| 2             | 55-21-006     | 1-5/8" x 1-5/8" UNISTRUT x 6" LG       | PAD                 | (2) TABLE     |
| 3             | 55-10-830     | 1"DIA. GALVANIZED COIL THREADED INSERT | PAD                 | (1) TABLE     |
| 4             | PB2436-L18-05 | 24" X 36" X 18" LOWER SECTION          |                     | (1) REQ'D     |

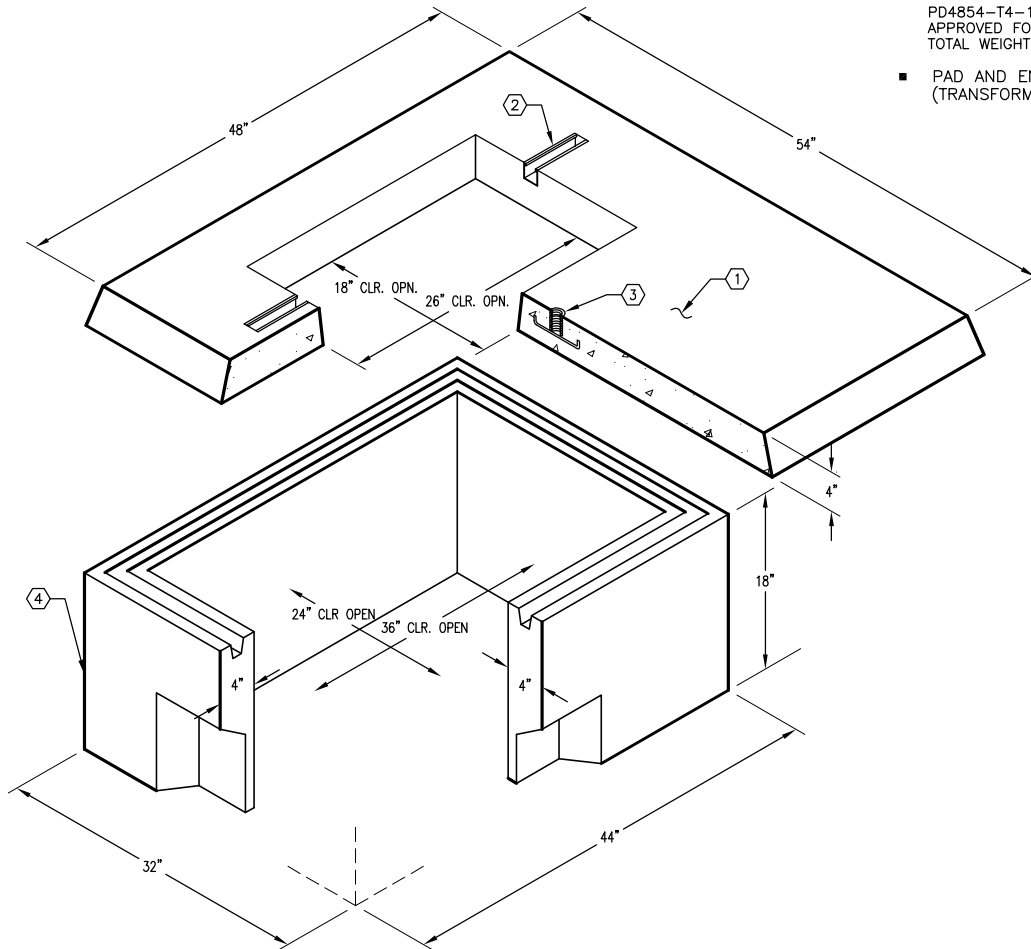
**NOTES:**

- PAD DESIGNED PARKWAY LOADING USING 5500 PSI [CONCRETE COMPRESSIVE STRENGTH AND 60,000 PSI YIELD STRENGTH ASTM A-706 STEEL REINFORCEMENT.

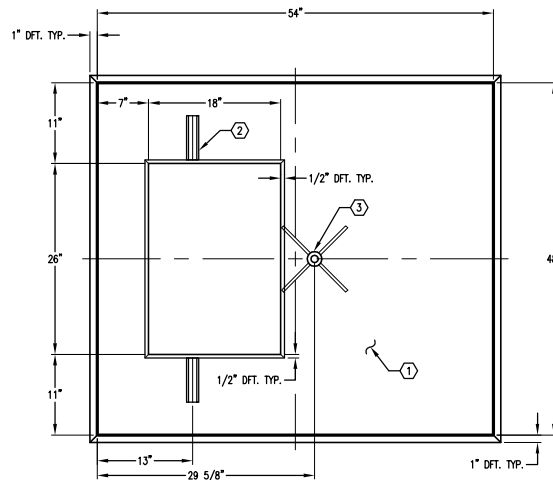
**ORDERING INFORMATION:**

PD4854-T4-17B FOR UNIT AS SHOWN APPROVED FOR CITY OF BURBANK-S-464G TOTAL WEIGHT OF PAD IS 743 Lbs.

- PAD AND ENCLOSURE DESIGNED FOR 3,000 LB. (TRANSFORMER) VERTICAL DEAD LOAD.



**PLAN VIEW**



| # | DATE | DESCRIPTION | BY |
|---|------|-------------|----|
|   |      |             |    |