

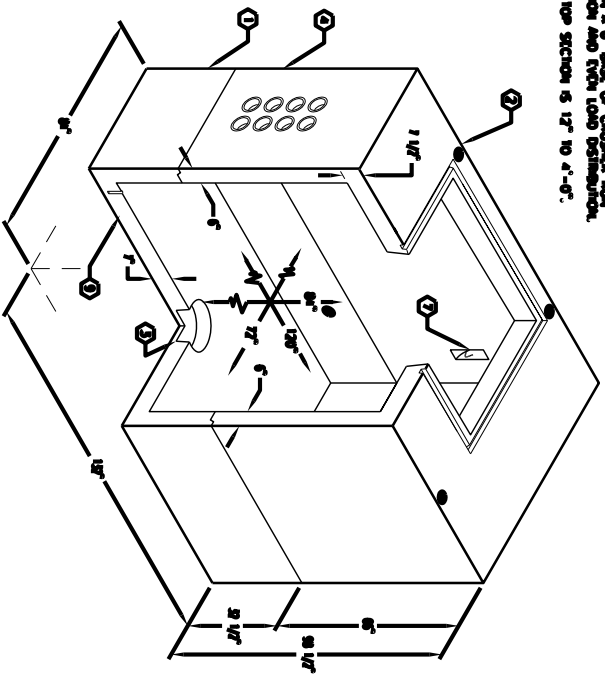
# 6'-0" x 10'-0" FLAT WALL VAULT x 7'-0" DEEP

## MATERIAL LIST

ITEM	PART NO.	DESCRIPTION	GAGE NO./LOCATE	WEIGHT/MOUNT
1	UV610-B24-31	24" BOTTOM SECTION	CG-610-B24-05(89)	12,156 lbs
2	UV610-T80-31V	60" TOP SECTION	CG-610-T80-31V	16,754 lbs
3	KNOCK OUT	13" DIA x 1/4" DIA SUMP x 5" DEEP	BOTTOM SECTION	(1) CORE
4	55-30-52	5" DIA. TERMINATORS SQH-40	TOP SECTION	(32) CORE
5	KNOCK OUT	18" x 18" KNOCK OUT x 4 1/2" DEEP	TOP SECTION	(2) CORE
6	KNOCK OUT	12" DIA. VENT KNOCK OUT x 5" DEEP	TOP SECTION	(2) CORE
7	55-35-03	7/8" DIA. x 4-1/2" GALV. PULL IRON	TOP SECTION	(2) CORE
8	55-35-03	7/8" DIA. x 4-1/2" GALV. PULL IRON	BOTTOM SECTION	(4) CORE
9	55-10-425	1/2" THREADED BRONZE INSERT BRAZED IN STRUCTURAL STEEL REBAR "GRD" SHALL BE STEELLED IN RED LETTERS (1 1/2" MIN., 2" MAX) ON THE CONCRETE ABOVE EACH INSERT	TOP SECTION BOTTOM SECTION	(4) CORE (2) CORE
10				
11				
12				
13	KNOCK OUT	1" DIA. BLIND GROUND ROD HOLE	BOTTOM SECTION	(2) CORE

- NOTES:**
- 1. WALL STRUCTURE IN ACCORDANCE WITH ABOVE
  - 2. 10'-0" x 10'-0" INVERT CONCRETE LANDING USING 5000 PSI (11320) COMPRESSIVE STRENGTH CONCRETE AND 6000 PSI (11320) FILL STRENGTH ASHTO A-7.56 STEEL REINFORCEMENT PER CACS, 215150.
  - 3. ALL INTERIOR SURFACES SHALL BE PAINTED WITH ONE COAT OF FLAT LATEX WHITE PAINT.
  - 4. WALL TO BE PLACED ON A 6" BERT OF CHAPER BENT FOR USE OF REGULATOR AND EVEN LOAD DISTRIBUTION.
  - 5. LIGHTS OF CORE OVER TOP SECTION IS 12" TO 4'-0".

**GENERAL INFORMATION:**  
 4810-FV84-31 FOR ASSEMBLY AS SHOWN.  
 PER CITY OF ALBUQUERQUE DMC 0017.  
 TOTAL WEIGHT OF ASSEMBLY SHOWN IS 28,910 LBS.

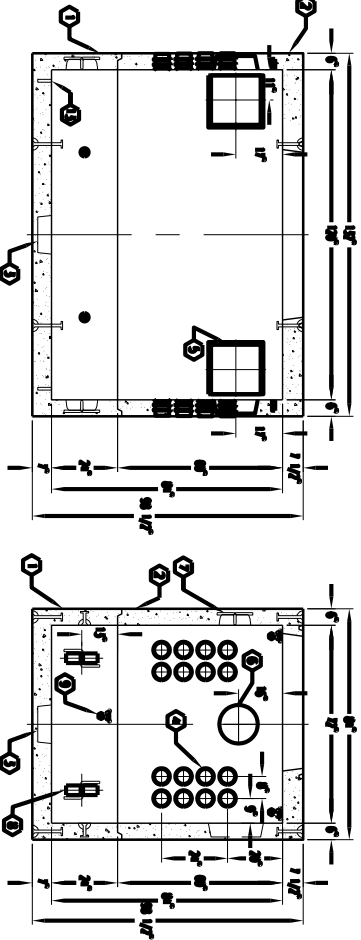
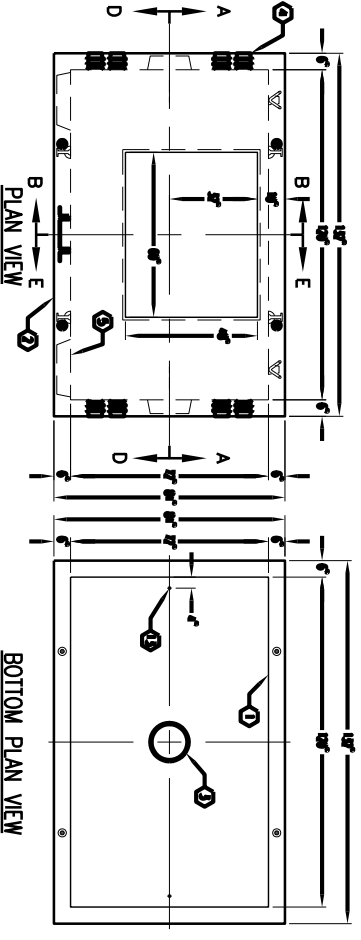
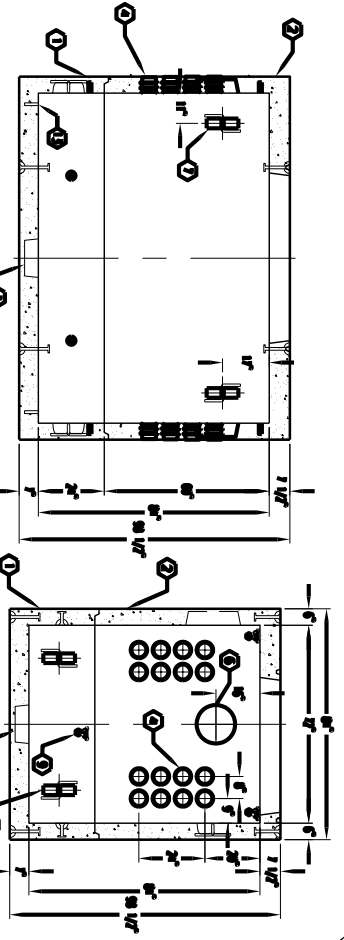


MINIMUM EXCAVATION SIZE:  
 8'-0" x 13'-6" x DEPTH REQ'D

K610-FV84-31  
 PER CITY OF ALBUQUERQUE DMC 0017  
 10-01-03



ALBUQUERQUE, NM 87102



ITEM	DESCRIPTION	QTY
1	UV610-B24-31	1
2	UV610-T80-31V	1
3	KNOCK OUT	1
4	55-30-52	32
5	KNOCK OUT	2
6	KNOCK OUT	2
7	55-35-03	2
8	55-35-03	4
9	55-10-425	4
10		
11		
12		
13	KNOCK OUT	2

K610-FV84-31  
 PER CITY OF ALBUQUERQUE DMC 0017  
 10-01-03



ALBUQUERQUE, NM 87102